

# Technical Information Bulletin

SLM Electronics, Inc. Saint Louis, Missouri

---

Mar. 5, 1999

# TIB0002

## Units Affected:

### Model

Crate CA-60

Crate CA-60D

### Serial Number

All prior to AARDL3XXXX

All prior to AAUDL3XXXX

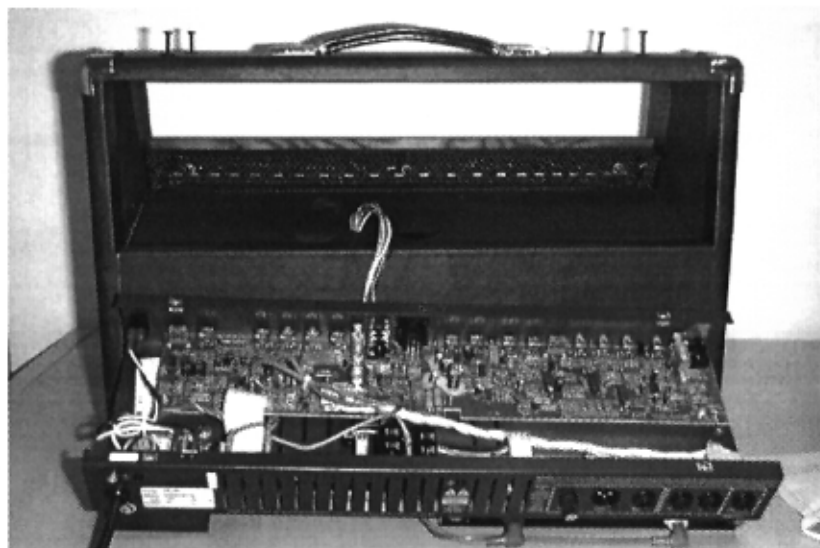
## Purpose:

Engineering changes have been incorporated into current production units to reduce the noise generated by the chorus circuit. This change should be performed on any units being serviced for other reasons or if the customer complains of excessive chorus noise.

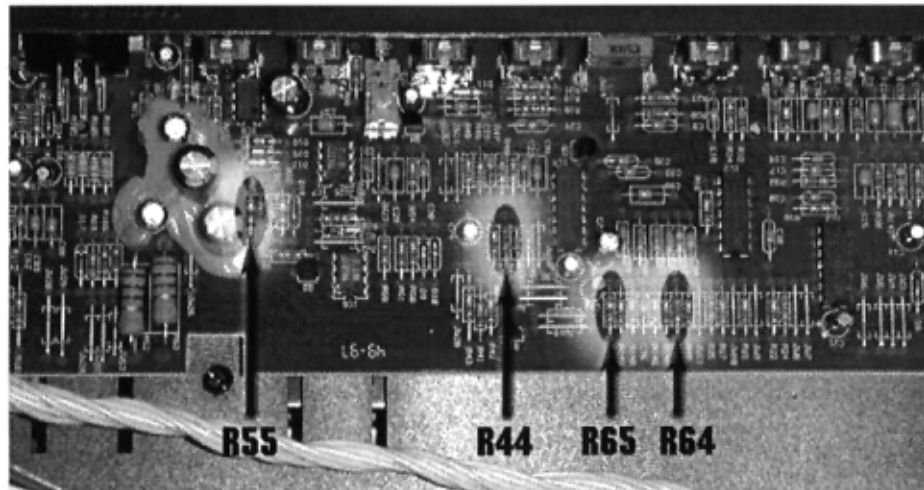
## Recommended Action:

***NOTE: Use standard anti-static precautions when working with the PCB.***

1. Tools/parts needed: #2 phillips screwdriver, sharp knife\*, wire cutters, soldering iron and solder, and the following resistors: (2) 10k 1/4W, (1) 220k 1/4W, (1) 12k 1/4W.
2. Unplug the unit.
3. Unscrew the four chassis mount screws from the top of the cabinet and pull them up about 1".
4. Position the amp with its front panel away from you and gently pull the chassis assembly out from the cabinet. Take care not to damage the speaker wires! Rest the chassis assembly on your work surface, behind the cabinet (see photo below).



5. Locate the following four resistors: R44, R55\*, R64 and R65 (see photo on following page). Remove these four components from the printed circuit board, leaving enough lead sticking up to solder to the new resistors.



6. Install the new resistors as follows:

R44, R65:	10k 1/4W
R55*:	220k 1/4W
R64:	12k 1/4W
7. Reposition the chassis assembly into the cabinet. Line up the nuts along the top edges of the chassis with the mounting screws, then tighten the screws. **DO NOT** overtighten!
8. Feed the excess speaker wire (its service loop) back into the cabinet.

*\*Use a sharp knife blade to carefully remove any component shock mount from around R55. Do not disturb the integrity of the adhesion to the nearby capacitors!!*

SLM Electronics, A Division of St. Louis Music, Inc.  
11880 Borman Drive, St. Louis, MO 63146  
Phone (314) 569-0141  
Service Department: Phone (800) 738-7563; Fax (314) 567-7278