

SWITCH LINE VOLTAGES			
	S	S'	D
CLEAN	0	-10 VDC	0
DIRTY	-10 VDC	0	4.5 VDC

4) NOTE : ALL DC VOLTAGES APPLIED WITH NO SIGNAL.
 TEST POINT CONDITIONS: 500Hz INPUT
 ALL CONTROLS @ '5'. 120V LINE - 16 OHM

CAUTION:
 THIS SCHEMATIC IS PROVIDED FOR USE BY QUALIFIED PERSONNEL.
 TO AVOID RISK OF ELECTRIC SHOCK, REFER SERVICING TO QUALIFIED
 SERVICE PERSONNEL. DO NOT PERFORM ANY SERVICING BEYOND
 THAT EXPLAINED IN THE OPERATING INSTRUCTIONS.

NOTES:
 1) CAUTION: SHOCK HAZARD!!
 THIS UNIT CONTAINS HAZARDOUS VOLTAGE. DISCONNECT POWER
 AND BE SURE POWER SUPPLY IS DISCHARGED BEFORE
 TOUCHING INTERNAL PARTS.
 2) UNLESS NOTED, RESISTOR VALUES IN OHMS, 1/4W-5% TOL.
 CAPACITOR VALUES IN MICROFARADS, 50V-10% TOL.
 3) VOLTAGES ARE MEASURED WITH 1 MEGOHM OSCILLOSCOPE
 AND 10 MEGOHM DIGITAL VOLTMETER.

REV	Date	DESCRIPTION	Ecr(s)/Ecn(s)	Chgd By	Appvd by	Date
1	01/06/03	C7 TO OPTIONAL NOT USED	N01026	REM		
0	2/18/02	CONTROL ISSUE				

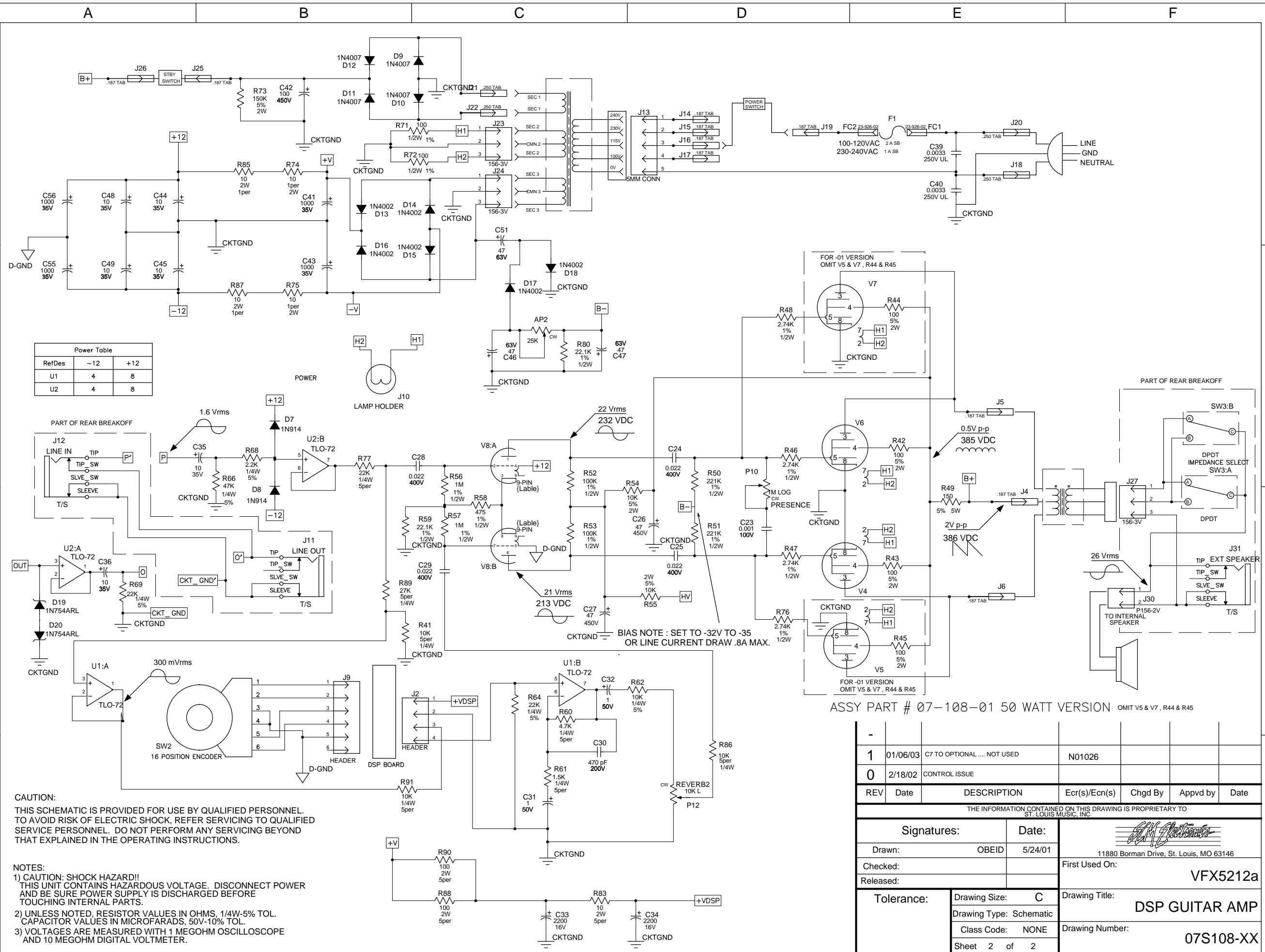
THE INFORMATION CONTAINED ON THIS DRAWING IS PROPRIETARY TO
 ST. LOUIS MUSIC, INC

Signatures: _____ Date: _____
 Drawn: OBEID 5/24/01
 Checked: _____
 Released: _____

Tolerance: _____ Drawing Size: C
 Drawing Type: Schematic
 Class Code: NONE
 Sheet 1 of 2

11880 Borman Drive, St. Louis, MO 63146
 First Used On: _____
 Drawing Title: DSP GUITAR AMP
 Drawing Number: 07S108-XX

ASSY P/N 07-108-01



ASSY PART # 07-108-01 50 WATT VERSION OMIT V5 & V7, R44 & R45

1	01/06/03	C7 TO OPTIONAL NOT USED	N01026			
0	2/18/02	CONTROL ISSUE				
REV	Date	DESCRIPTION	Ecr(s)/Ecn(s)	Chgd By	Appvd by	Date
THE INFORMATION CONTAINED ON THIS DRAWING IS PROPRIETARY TO ST. LOUIS MUSIC, INC.						
Signatures:		Date:	 11880 Borman Drive, St. Louis, MO 63146 First Used On: VFX5212a			
Drawn: OBEID		5/24/01				
Checked:						
Released:						
Tolerance:		Drawing Size: C	Drawing Title: DSP GUITAR AMP			
		Drawing Type: Schematic	Drawing Number: 07S108-XX			
		Class Code: NONE	Sheet 2 of 2			