

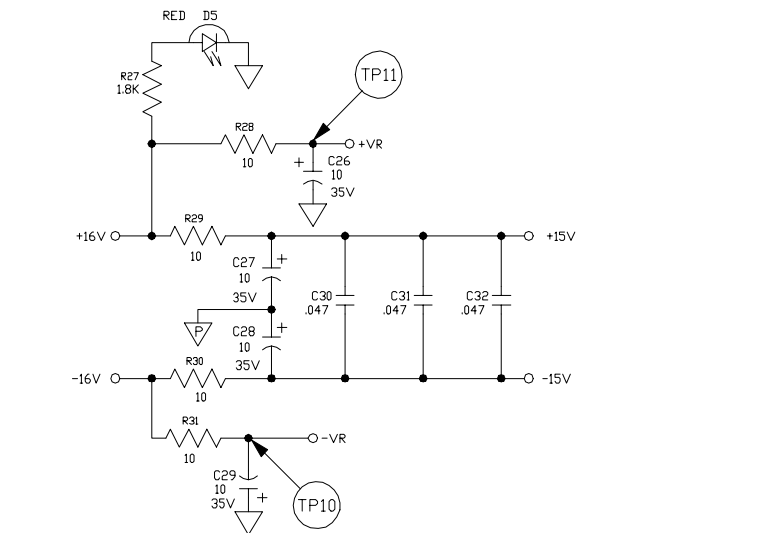
THIS SECTION OF THE SCHEMATIC REFLECTS CHANNEL 1. CHANNELS 2, 3, & 4 ARE THE SAME AS CHANNEL 1 WITH DESIGNATORS ADJUSTED.

EACH CHANNELS DESIGNATORS ARE INCREMENTED BY ONE HUNDRED. FOR EXAMPLE, R1=CHANNEL 1, R101=CHANNEL 2...

CHANNEL 1 USES IC1-A AND IC2-A
 CHANNEL 2 USES IC1-B AND IC2-B
 CHANNEL 3 USES IC101-A AND IC102-A
 CHANNEL 4 USES IC101-B AND IC102-B

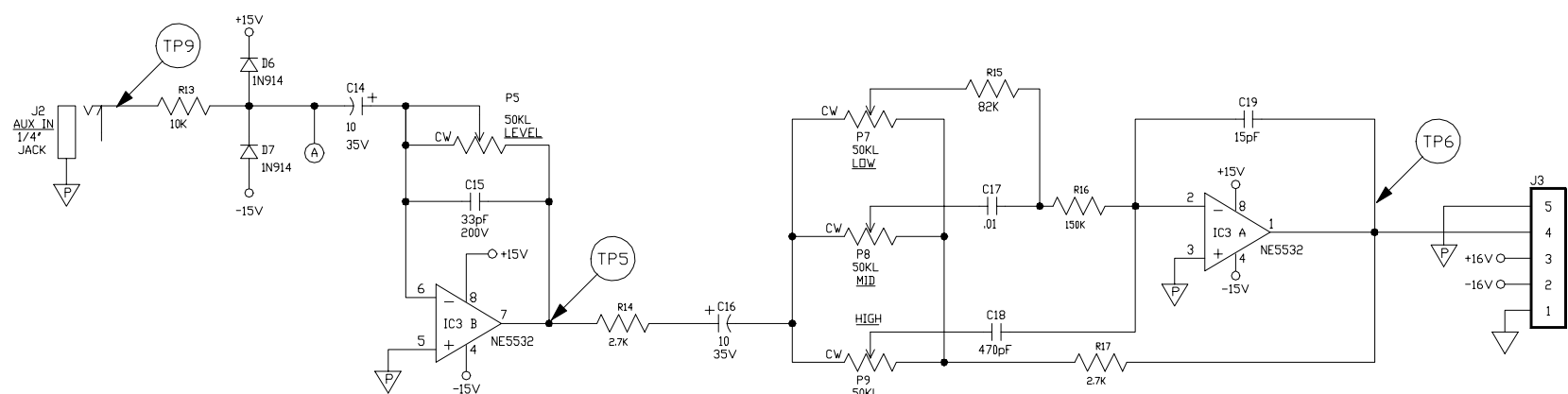
| TEST POINTS | VOLTAGE (rms) | WAVE FORM | VOLTAGE (DC) |
|-------------|---------------|-----------|--------------|
| 1 | 10mV | | --- |
| 2 | 16mV | | --- |
| 3 | .81V | | --- |
| 4 | 2.7V * | | --- |
| 5 | 1V | | --- |
| 6 | .7V | | --- |
| 7 | 132mV | | --- |
| 8 | 1.43V | | --- |
| 9 | .2V | | --- |
| 10 | --- | --- | -15V |
| 11 | --- | --- | +15V |

CONDITIONS
 1KHz SINE WAVE WITH ALL CONTROLS @ "5" EXCEPT CHANNEL GAIN, REVERB SEND, LEVEL, & REVERB RETURN @ "10"
 * 150 ohm LOAD ACROSS R18



NOTES

- CAUTION: SHOCK HAZARD!! THIS UNIT CONTAINS HAZARDOUS VOLTAGE. DISCONNECT POWER AND BE SURE POWER SUPPLY IS DISCHARGED BEFORE TOUCHING INTERNAL PARTS.
- UNLESS NOTED, RESISTOR VALUES IN OHMS, 1/4W-5% TOL. CAPACITOR VALUES IN MICROFARADS, 50V-10% TOL.
- VOLTAGES ARE MEASURED WITH 1 MEGOHM OSCILLOSCOPE AND 10 MEGOHM DIGITAL VOLTMETER.
- PREAMP GND ∇ LED GND ∇ CHASSIS GROUND ∇



| REV | DATE | BY | CHK'D | DESCRIPTION |
|-----|---------|-----|-------|--|
| 2 | 4/5/99 | REM | | CHG'D CONNECTION OF C33 & C34, ETC TO OP AMP + & - AS SHOWN PER ECO990043. |
| 1 | 2-10-99 | RLB | | SHORTED PINS 5 & 7 ON J1 PER ECO 990043 |

| | | | |
|------------------------------|-----|---------------------------|--|
| SIGNATURES: | | DATE: | 11860 BORMAN DR. ST. LOUIS, MISSOURI 63148 |
| DRAWN: | MGA | 11/14/91 | |
| CHK'D: | DJR | 11/14/91 | |
| APP'D: | DJR | 11/14/91 | |
| ORIGINAL ISSUED: | | | |
| PROJECT NAME: | | | PA-4 BOX MIXER |
| DRAWING NAME: | | | |
| CHANNEL/MASTER BRD SCHEMATIC | | | |
| PLOT DATE: | | DRAWING NO. 07S681-02 | |
| PLOT TIME: | | SCALE: NONE SHEET: 1 OF 1 | |
| FILE NAME: | | | |