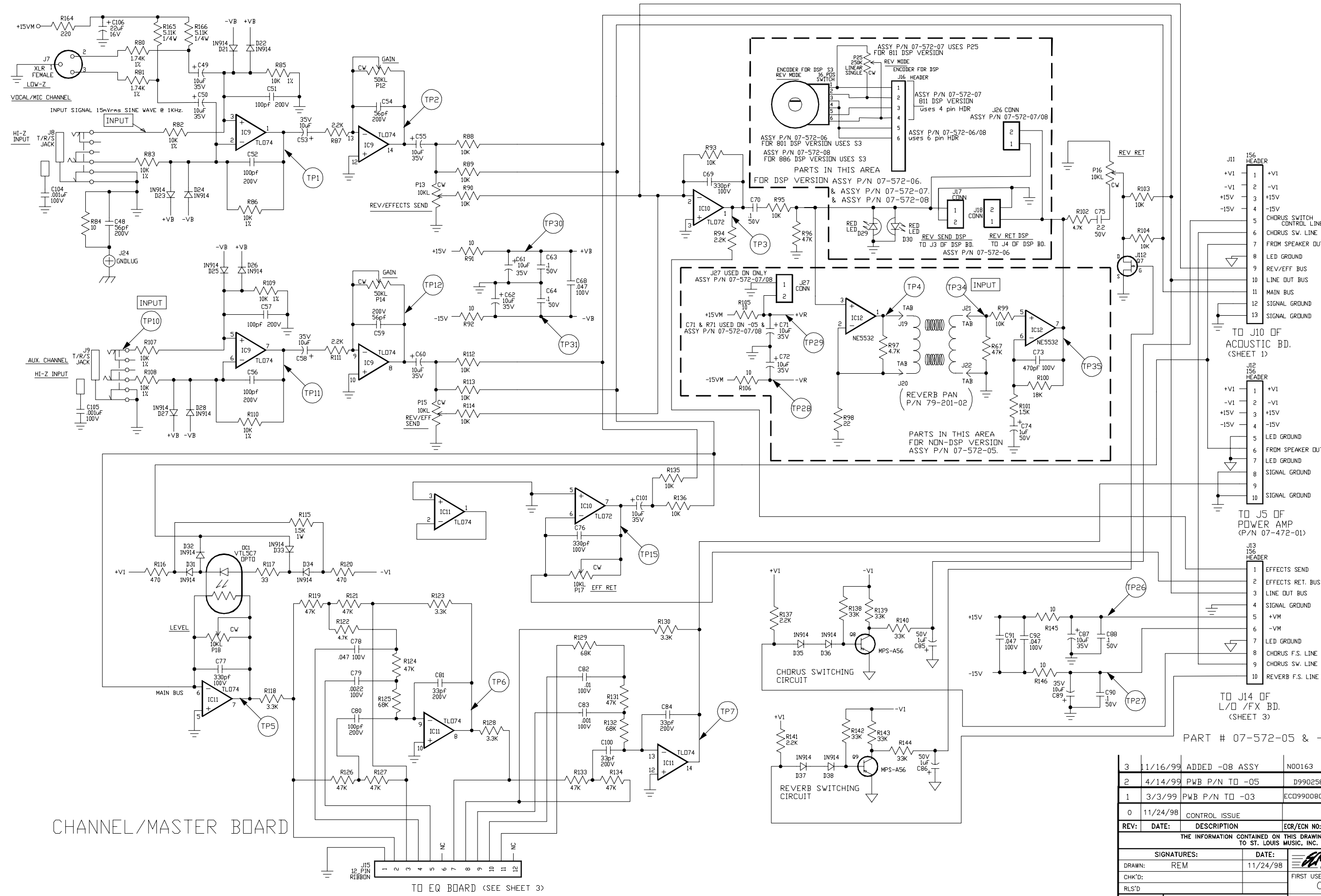


ACOUSTIC CHANNEL BOARD

- J10 156 HEADER
- 1 +V1
 - 2 -V1
 - 3 +15V
 - 4 -15V
 - 5 CHORUS SWITCH CONTROL LINE
 - 6 CHORUS SWITCH LINE
 - 7 FROM SPEAKER OUT
 - 8 LED GROUND
 - 9 REV/EFF BUS
 - 10 LINE OUT BUS
 - 11 MAIN BUS
 - 12 SIGNAL GROUND
 - 13 SIGNAL GROUND
- TO J11 OF MASTER BOARD
SEE SHEET 2.

PART # 07-572-05 & -06 & -07 & -08

3	11/16/99	ADDED -08 ASSY	N00163	REM		
2	4/14/99	PWB P/N TO -05	D990258	REM	DJR	8/11/99
1	3/3/99	PWB P/N TO -03	ECD990080	REM	DJR	3/3/99
0	11/24/98	CONTROL ISSUE		REM	DJR	11/24/98
REV:	DATE:	DESCRIPTION	ECR/ECN NO:	CHNG'D BY:	APPR'D BY:	DATE:
THE INFORMATION CONTAINED ON THIS DRAWING IS PROPRIETARY TO ST. LOUIS MUSIC, INC.						
SIGNATURES:		DATE:		11880 Borman Dr. St. Louis, Missouri 63146		
DRAWN: REM		11/24/98		FIRST USED ON:		
CHK'D:				CA125a/CA125d		
RLS'D:				DRAWING TITLE:		
DRAWING SIZE: D		SCHEMO		DRAWING TYPE: SCHEMO - ACOUSTIC AMP		
DRAWING TYPE: SCHEMO				DRAWING NO.:		
CLASS CODE:				07S572-XX		
SCALE: NONE		SHEET: 1 OF 3				



CHANNEL MASTER BOARD

TO EQ BOARD (SEE SHEET 3)

J11 156 HEADER
 1 +V1
 2 -V1
 3 +15V
 4 -15V
 5 CHORUS SWITCH CONTROL LINE
 6 CHORUS SW. LINE
 7 FROM SPEAKER OUT
 8 LED GROUND
 9 REV/EFF BUS
 10 LINE OUT BUS
 11 MAIN BUS
 12 SIGNAL GROUND
 13 SIGNAL GROUND

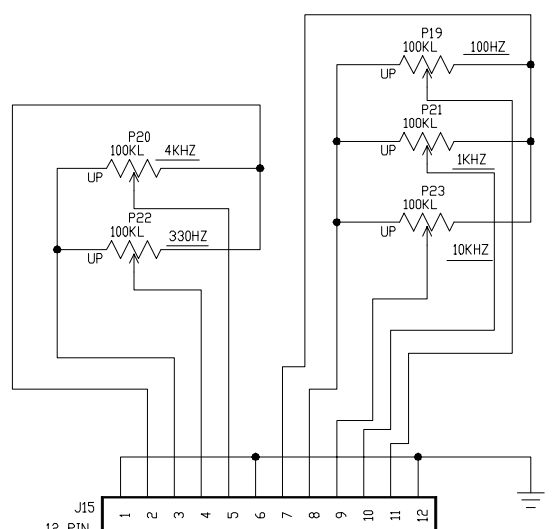
TO J10 OF ACOUSTIC BD. (SHEET 1)
 J12 156 HEADER
 1 +V1
 2 -V1
 3 +15V
 4 -15V
 5 LED GROUND
 6 FROM SPEAKER OUT
 7 LED GROUND
 8 SIGNAL GROUND
 9 SIGNAL GROUND

TO J5 OF POWER AMP (P/N 07-472-01)
 J13 156 HEADER
 1 EFFECTS SEND
 2 EFFECTS RET. BUS
 3 LINE OUT BUS
 4 SIGNAL GROUND
 5 +VM
 6 -VM
 7 LED GROUND
 8 CHORUS F.S. LINE
 9 CHORUS SW. LINE
 10 REVERB F.S. LINE

TO J14 OF L/O /FX BD. (SHEET 3)
 PART # 07-572-05 & -06 & -07 & -08

3	11/16/99	ADDED -08 ASSY	N00163	REM		
2	4/14/99	PWB P/N TO -05	D990258	REM	DJR	8/11/99
1	3/3/99	PWB P/N TO -03	EC0990080	REM	DJR	3/3/99
0	11/24/98	CONTROL ISSUE		REM	DJR	11/24/98
REV:	DATE:	DESCRIPTION	ECR/ECN NO:	CHNG'D BY:	APPR'D BY:	DATE:
THE INFORMATION CONTAINED ON THIS DRAWING IS PROPRIETARY TO ST. LOUIS MUSIC, INC.						
SIGNATURES:		DATE:		11880 Berman Dr. St. Louis, Missouri 63146		
DRAWN: REM		11/24/98		FIRST USED ON: CA125a/CA125Da		
CHK'D:				DRAWING TITLE: SCHEMO - ACOUSTIC AMP		
RLS'D:				DRAWING NO.: 07S572-XX		
TOLERANCES:		DRAWING SIZE: D		SCALE: NONE		
		DRAWING TYPE: SCHEMO		SHEET: 2 OF 3		

EQ BOARD TO MASTER BOARD (SHEET 2)



IC VOLTAGE CHART			
IC #	+7.5V	-7.5V	-15V
IC1	---	---	PIN 8 PIN 4
IC2	---	---	PIN 4 PIN 11
IC3	---	---	PIN 8 PIN 4
IC4	---	---	PIN 8 PIN 4
IC5	---	---	PIN 4 PIN 11
IC6	PIN 1	PIN 5	---
IC7	PIN 1	PIN 5	---
IC8	---	---	PIN 8 PIN 4
IC9	---	---	PIN 4 PIN 11
IC10	---	---	PIN 8 PIN 4
IC11	---	---	PIN 4 PIN 11
IC12	---	---	PIN 8 PIN 4

- NOTES
- 1) CAUTION: SHOCK HAZARD!! THIS UNIT CONTAINS HAZARDOUS VOLTAGE. DISCONNECT POWER AND BE SURE POWER SUPPLY IS DISCHARGED BEFORE TOUCHING INTERNAL PARTS.
 - 2) UNLESS NOTED, RESISTOR VALUES IN OHMS, 1/4W-5% TOL. CAPACITOR VALUES IN MICROFARADS, 50V-10% TOL.
 - 3) VOLTAGES ARE MEASURED WITH 1 MEGOHM OSCILLOSCOPE AND 10 MEGOHM DIGITAL VOLTMETER.
 - 4) SIGNAL GROUND \perp LED GROUND ∇ CHASSIS GROUND ///

CAUTION: THIS SCHEMATIC IS PROVIDED FOR USE BY QUALIFIED PERSONNEL. TO AVOID RISK OF ELECTRIC SHOCK, REFER SERVICING TO QUALIFIED SERVICE PERSONNEL. DO NOT PERFORM ANY SERVICING BEYOND THAT EXPLAINED IN THE OPERATING INSTRUCTIONS.

TEST POINT CONDITIONS: CONTROLS SET AS FOLLOWS.

INSTRUMENT CHANNEL GAIN, REV/EFF @ '10'; LOW, MID, HIGH @ '5';
 FREQUENCY, CUT, DEPTH, RATE @ '0';
 MIC. & AUX. CHANNEL GAIN & REV/EFF @ '10'; EFF. RETURN, LINE OUT, LEVEL @ '10'.
 EQ. FLAT. INPUT SIGNAL 15mVrms SINE WAVE @ 1KHz.

T.P.	AC VOLTAGE (rms)	DC VOLTAGE	WAVEFORM
1	15mV	---	~
2	.32V	---	~
3	.32V	---	~
4	14.5v	---	⏏
5	.32V	---	~
6	.32V	---	~
7	.32V	---	~
8	.32V	---	~
9	.32V	---	~
10	15mV	---	~
11	15mV	---	~
12	.32V	---	~
13	15mV	---	~
14	26mV	---	~
15	80mV	---	~
16	15mV	---	~
17	23mV	---	~
18	.53v	---	~

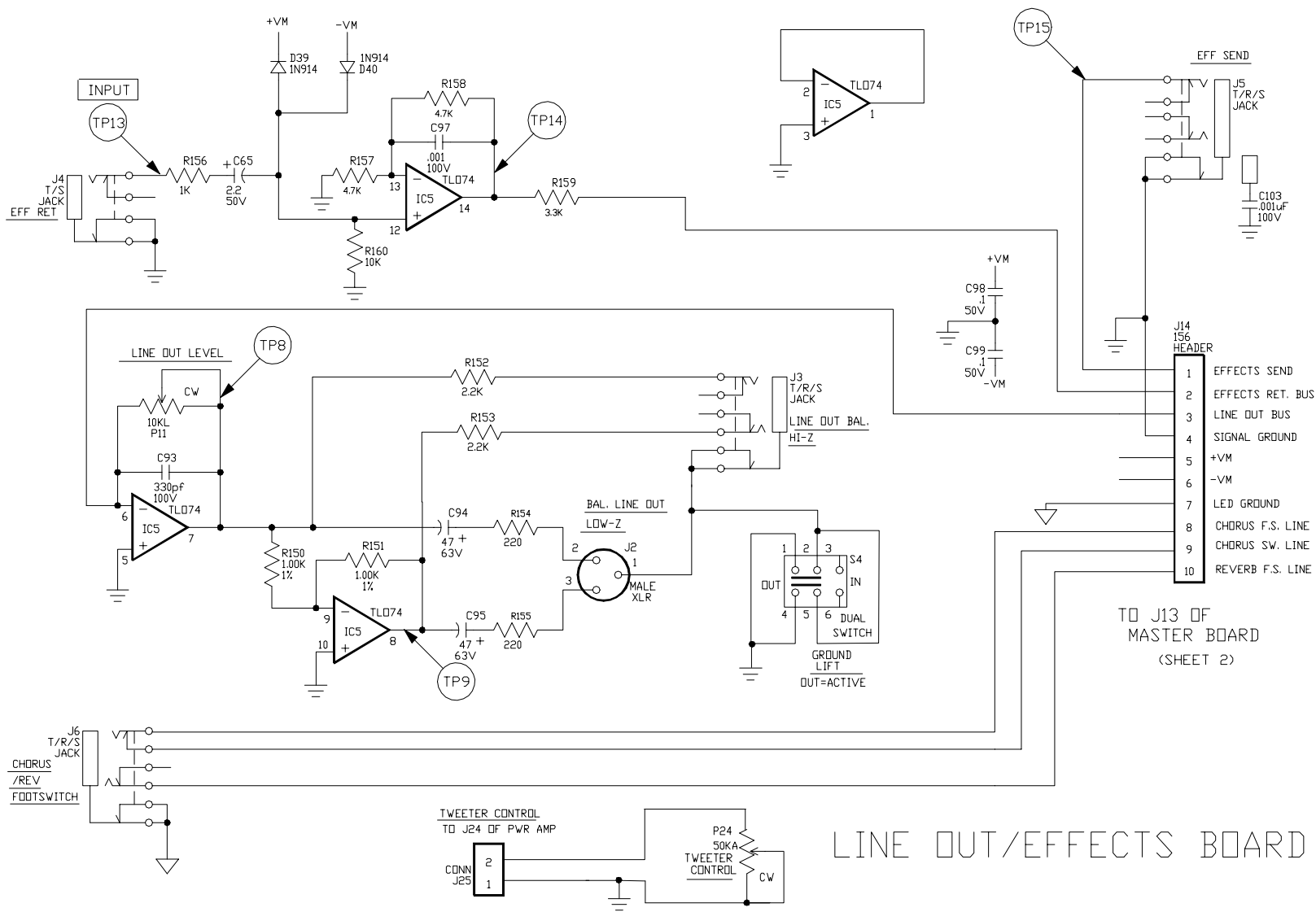
T.P.	AC VOLTAGE (rms)	DC VOLTAGE	WAVEFORM
19	.53V	---	~
20	.2V	+16mVDC	~
21	.2V	-.35VDC	~
22	.16V	---	~
23	15V p-p 160 KHZ	---	⏏
24	3V p-p	---	~*
25	2V p-p	---	~*
26	---	+15VDC	---
27	---	-15VDC	---
28	---	-15VDC	---
29	---	+15VDC	---
30	---	+15VDC	---
31	---	-15VDC	---
32	---	+15VDC	---
33	---	-15VDC	---
34	---	+25VDC	---
35	---	+2.7VDC	---

* DEPTH & RATE @ '10'.

PART # 07-572-05 & -06 & -07 & -08

3	11/16/99	ADDED -08 ASSY	N00163	REM		
2	4/14/99	PWB P/N TO -05	D990258	REM	DJR	8/11/99
1	3/3/99	PWB P/N TO -03	EC0990080	REM	DJR	3/3/99
0	11/24/98	CONTROL ISSUE		REM	DJR	11/24/98
REV:	DATE:	DESCRIPTION	ECR/ECN NO:	CHG'D BY:	APPR'D BY:	DATE:
THE INFORMATION CONTAINED ON THIS DRAWING IS PROPRIETARY TO ST. LOUIS MUSIC, INC.						
SIGNATURES:		DATE:		1180 Borman Dr. St. Louis, Missouri 63146		
DRAWN: REM		11/24/98		FIRST USED ON: CA125a/CA125Da		
CHK'D:				SCHEMO - ACOUSTIC AMP		
RLS'D:				DRAWING NO.: 07S572-XX		
TOLERANCES:		DRAWING SIZE: D		SCHEMO		
		DRAWING TYPE:		CLASS CODE:		
		SCALE: NONE		SHEET: 3 OF 3		

LAST DESIGNATOR	NOT USED
R166	IC12
C106	J27
D40	Q9
	D6
	C25 96
	R43 71



LINE OUT/EFFECTS BOARD

TO J13 OF MASTER BOARD (SHEET 2)