

TEST POINT CHART

T.P. #	D.C. VOLTAGE NO SIGNAL (V)	SIGNAL, CHANNEL 1 ACTIVE (VP-P)	SIGNAL, CHANNEL 2 ACTIVE (VP-P)
1	205	0.3	0.3
2	215	0.02	0.02
3	215	0.03	2.2
4	185	---	0.14
5	200	---	105
6	215	---	130 (CLIPPED)
7	0	6	
8	0	2 W/0.03VP-P SIGNAL FROM REV.	
9	0	0.6	
10	0	1.7	
11	265	22	15 (CLIPPED)
12	0	12	7.5 (CLIPPED)
13	---	0.2VDC	10VDC
14	---	10VDC	0.2VDC
15	---	0.2VDC (FX ON)	10VDC (FX OFF)

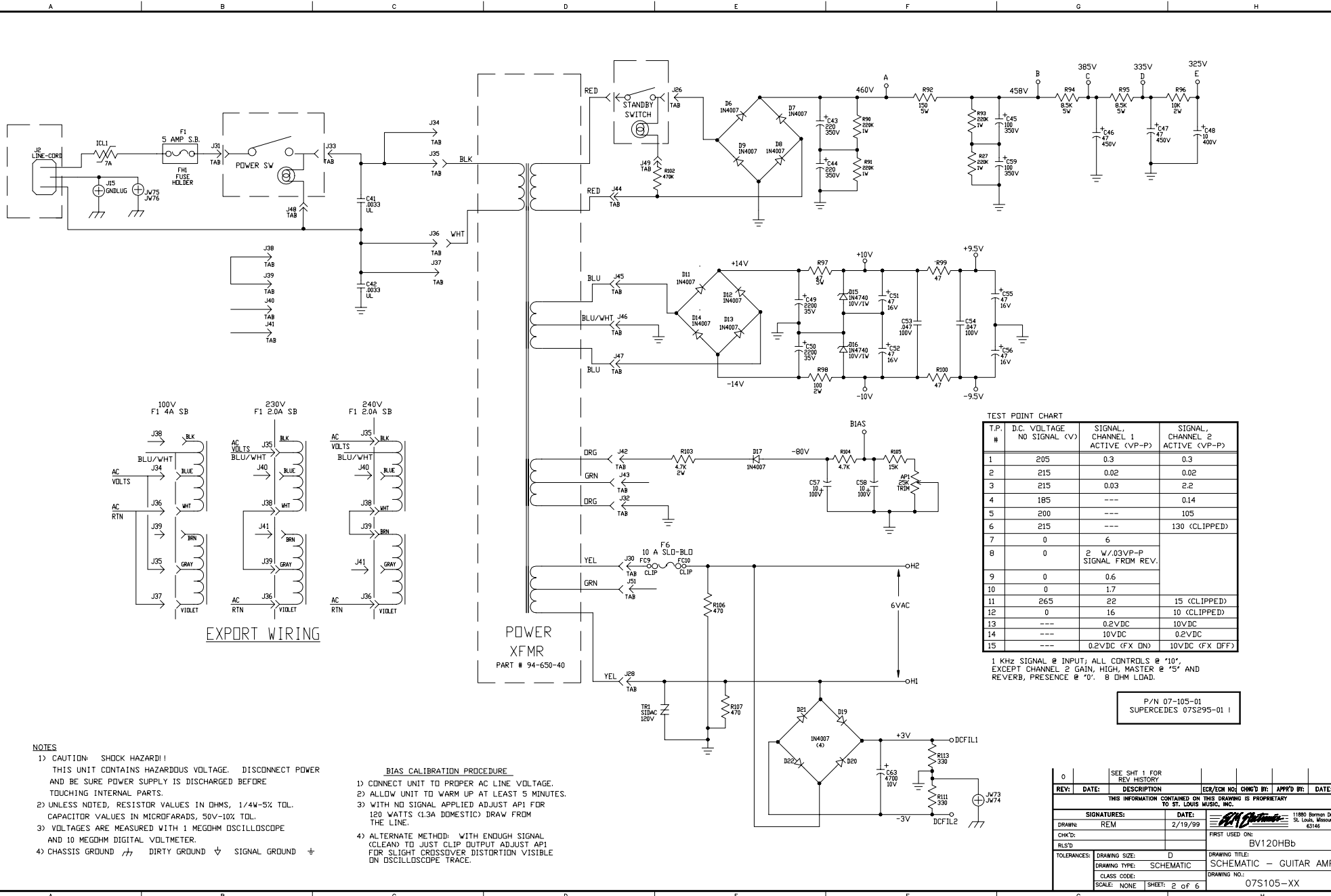
1 KHz SIGNAL @ INPUT; ALL CONTROLS @ "10", EXCEPT CHANNEL 2 GAIN, HIGH, MASTER @ "5" AND REVERB, PRESENCE @ "0". @ DIM LOAD.

P/N 07-105-02
SUPERCEDES 07S295-51 I

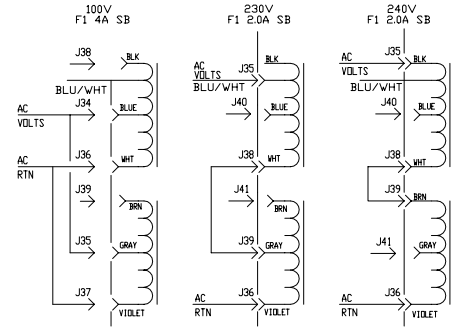
- NOTES**
- CAUTION: SHOCK HAZARD! THIS UNIT CONTAINS HAZARDOUS VOLTAGE. DISCONNECT POWER AND BE SURE POWER SUPPLY IS DISCHARGED BEFORE TOUCHING INTERNAL PARTS.
 - UNLESS NOTED, RESISTOR VALUES IN OHMS, 1/4W-5% TOL. CAPACITOR VALUES IN MICROFARADS, 50V-10% TOL.
 - VOLTAGES ARE MEASURED WITH 1 MEGOHM OSCILLOSCOPE AND 10 MEGOHM DIGITAL VOLTMETER.
 - CHASSIS GROUND ⚡ DIRTY GROUND ⚡ SIGNAL GROUND ⚡

- BIAS CALIBRATION PROCEDURE**
- CONNECT UNIT TO PROPER AC LINE VOLTAGE.
 - ALLOW UNIT TO WARM UP AT LEAST 5 MINUTES.
 - WITH NO SIGNAL APPLIED ADJUST AP1 FOR 85 WATTS (0.8A DOMESTIC) DRAW FROM THE LINE.
 - ALTERNATE METHOD: WITH ENOUGH SIGNAL (CLEAN) TO JUST CLIP OUTPUT ADJUST AP1 FOR SLIGHT CROSSOVER DISTORTION VISIBLE ON OSCILLOSCOPE TRACE.

1	10/4/00	CHCD PARTS PER ECN N00085	PER N00085	WFB		
0		CONTROL ISSUE				
A		INITIAL ISSUE				
REV:	DATE:	DESCRIPTION	ECR/ECN NO:	CHNG'D BY:	APP'D BY:	DATE:
THIS INFORMATION CONTAINED ON THIS DRAWING IS PROPRIETARY TO ST. LOUIS MUSIC, INC.						
SIGNATURES:		DATE:		11800 Borman Dr. St. Louis, Missouri 63146		
DRAWN:	REM	2/19/99		FIRST USED ON:	BV120Hb	
CHK'D:				DRAWING TITLE:	SCHEMATIC - GUITAR AMP	
RLS'D:				DRAWING NO.:	07S105-XX	
TOLERANCES:	DRAWING SIZE:	D	DRAWING TITLE:	SCHEMATIC - GUITAR AMP		
	CLASS CODE:	SCHEMATIC	DRAWING NO.:	07S105-XX		
	SCALE:	NONE	SHEET:	1 of 6		



EXPORT WIRING



POWER XFMR
PART # 94-650-40

TEST POINT CHART

T.P. #	D.C. VOLTAGE NO SIGNAL (V)	SIGNAL, CHANNEL 1 ACTIVE (VP-P)	SIGNAL, CHANNEL 2 ACTIVE (VP-P)
1	205	0.3	0.3
2	215	0.02	0.02
3	215	0.03	2.2
4	185	---	0.14
5	200	---	105
6	215	---	130 (CLIPPED)
7	0	6	
8	0	2 W/03VP-P SIGNAL FROM REV.	
9	0	0.6	
10	0	1.7	
11	265	22	15 (CLIPPED)
12	0	16	10 (CLIPPED)
13	---	0.2VDC	10VDC
14	---	10VDC	0.2VDC
15	---	0.2VDC (FX ON)	10VDC (FX OFF)

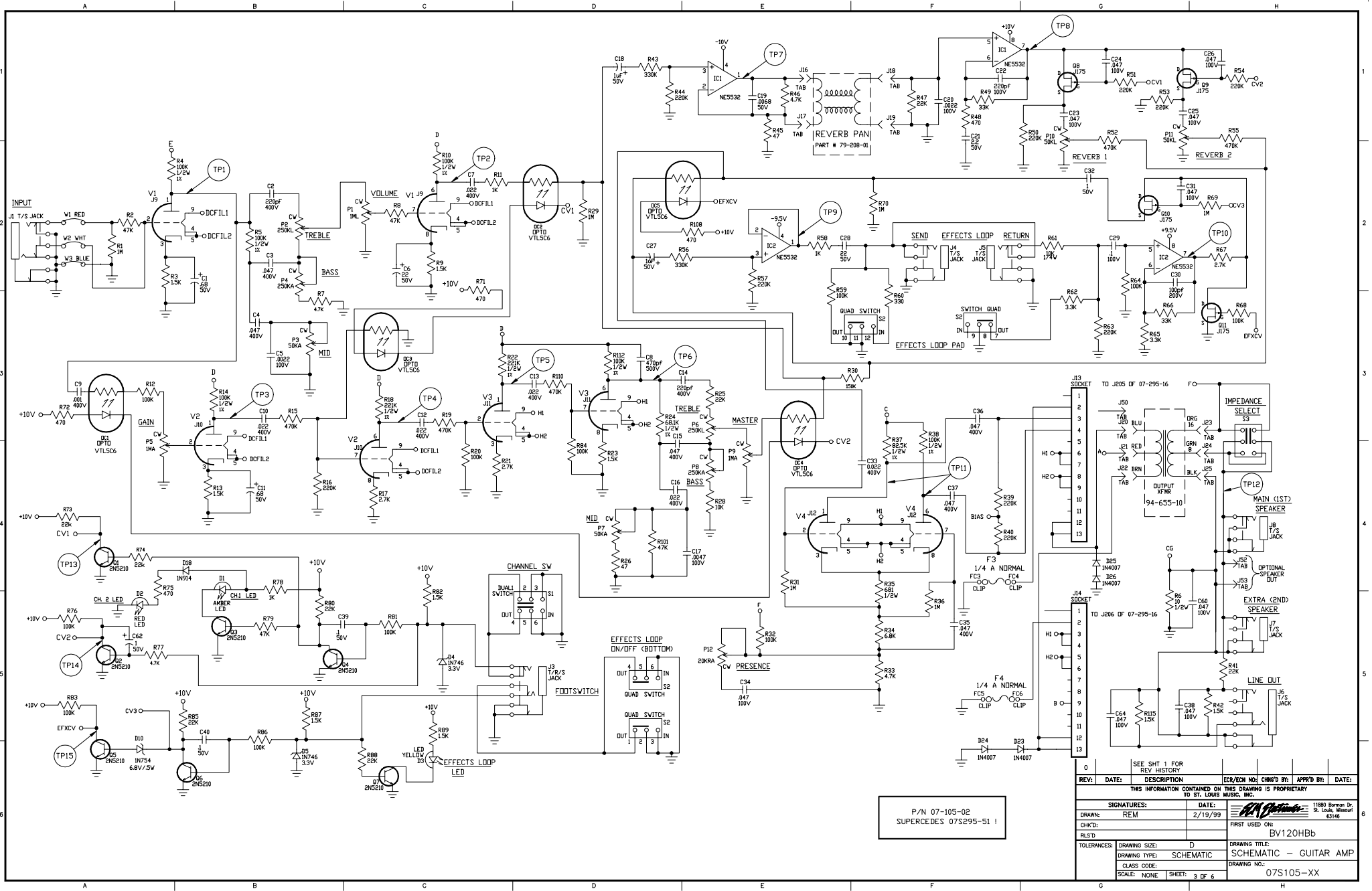
1 KHZ SIGNAL @ INPUT; ALL CONTROLS @ "10", EXCEPT CHANNEL 2 GAIN, HIGH, MASTER @ "5" AND REVERB, PRESENCE @ "0". 8 OHM LOAD.

P/N 07-105-01
SUPERCEDES 07S295-01 I

- NOTES**
- 1) CAUTION- SHOCK HAZARD!! THIS UNIT CONTAINS HAZARDOUS VOLTAGE. DISCONNECT POWER AND BE SURE POWER SUPPLY IS DISCHARGED BEFORE TOUCHING INTERNAL PARTS.
 - 2) UNLESS NOTED, RESISTOR VALUES IN OHMS, 1/4W-5% TOL. CAPACITOR VALUES IN MICROFARADS, 50V-10% TOL.
 - 3) VOLTAGES ARE MEASURED WITH 1 MEGOHM OSCILLOSCOPE AND 10 MEGOHM DIGITAL VOLTMETER.
 - 4) CHASSIS GROUND \perp DIRTY GROUND ∇ SIGNAL GROUND \oplus

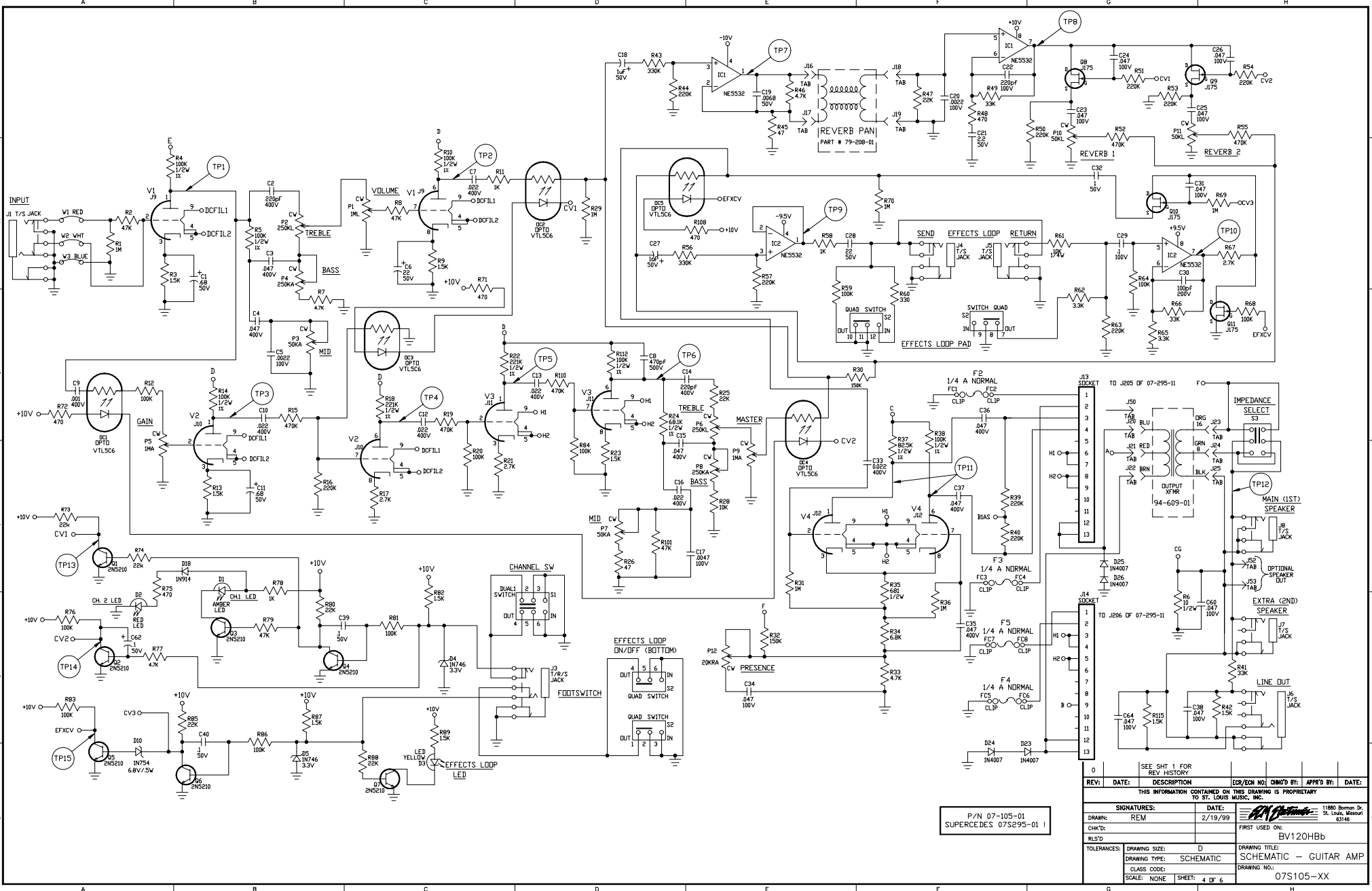
- BIAS CALIBRATION PROCEDURE**
- 1) CONNECT UNIT TO PROPER AC LINE VOLTAGE.
 - 2) ALLOW UNIT TO WARM UP AT LEAST 5 MINUTES.
 - 3) WITH NO SIGNAL APPLIED ADJUST AP1 FOR 120 WATTS (1.3A DOMESTIC) DRAW FROM THE LINE.
 - 4) ALTERNATE METHOD: WITH ENOUGH SIGNAL (CLEAN) TO JUST CLIP OUTPUT ADJUST AP1 FOR SLIGHT CROSSOVER DISTORTION VISIBLE ON OSCILLOSCOPE TRACE.

0	SEE SHT 1 FOR REV HISTORY	ICB/ECN NO:	CHG'D BY:	APP'D BY:	DATE:
REV:	DATE:	THIS INFORMATION CONTAINED ON THIS DRAWING IS PROPRIETARY TO ST. LOUIS MUSIC, INC.			
SIGNATURES:	DATE:	11800 Borman Dr, St. Louis, Missouri 63146			
DRAWN: REM	2/19/99	FIRST USED ON: BV120Hbb			
CHK'D:		SCHEMATIC - GUITAR AMP			
RLS'D:		DRAWING NO.: 07S105-XX			
TOLERANCES:	DRAWING SIZE: D	DRAWING TITLE: SCHEMATIC - GUITAR AMP			
	DRAWING TYPE: SCHEMATIC	DRAWING NO.: 07S105-XX			
	CLASS CODE:	SCALE: NONE SHEET: 2 of 6			



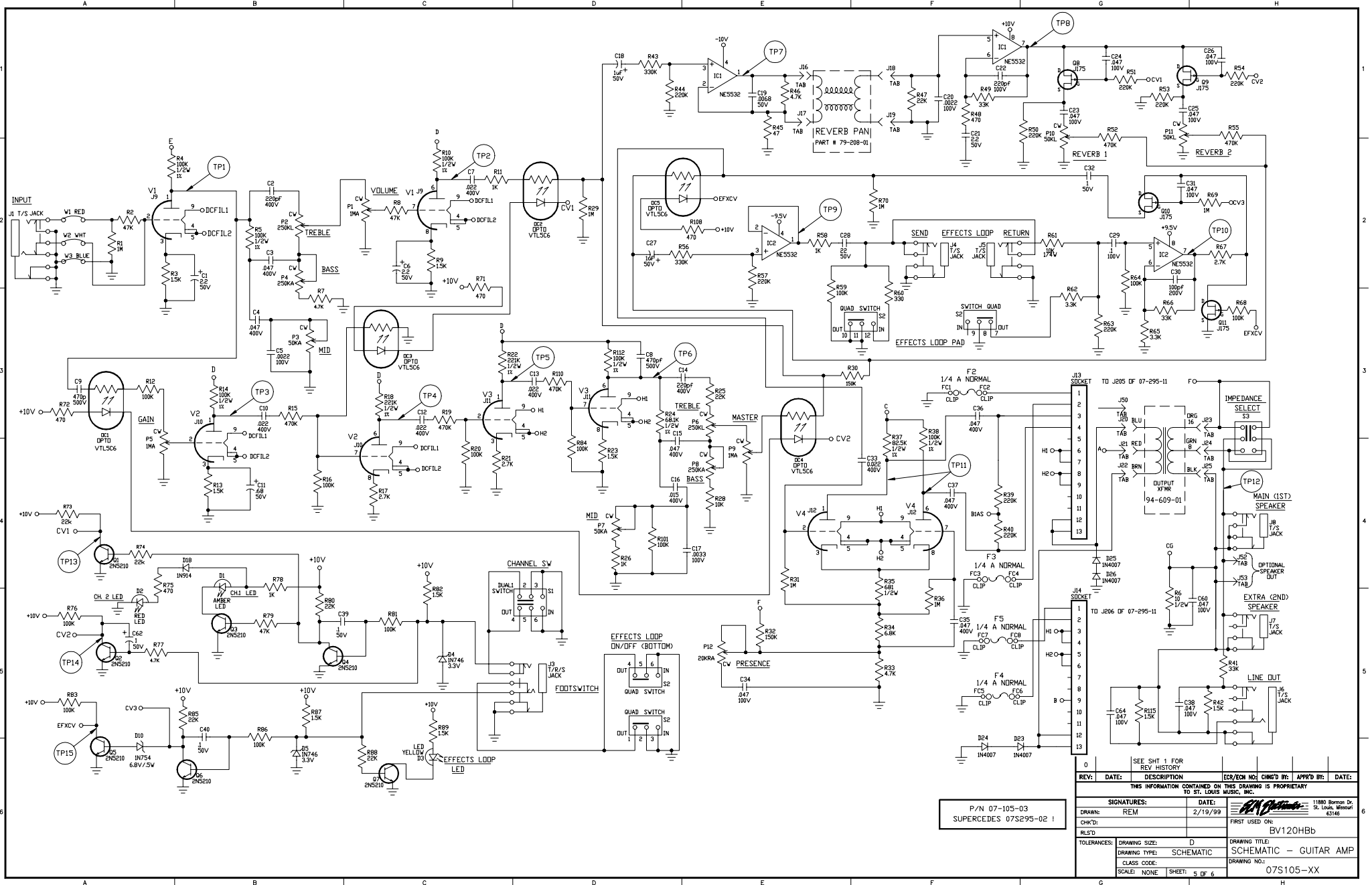
P/N 07-105-02
SUPERCEDES 07S295-11

REV:	DATE:	DESCRIPTION:	DESIGNER:	CHK'D BY:	DATE:
THIS INFORMATION CONTAINED ON THIS DRAWING IS PROPRIETARY TO ST. LOUIS MUSIC, INC.					
SIGNATURES:	DATE:	11800 Burton Dr. St. Louis, Missouri 63146			
DRAWN: REM	2/19/99				
CHK'D:		FIRST USED ON: BV120HBB			
RLSD:					
TOLERANCES:	DRAWING SIZE: D	DRAWING TITLE: SCHEMATIC - GUITAR AMP			
	DRAWING TYPE: SCHEMATIC	DRAWING NO.:			
	CLASS CODE:	SCALE: NONE SHEET: 3 OF 6			
		07S105-XX			



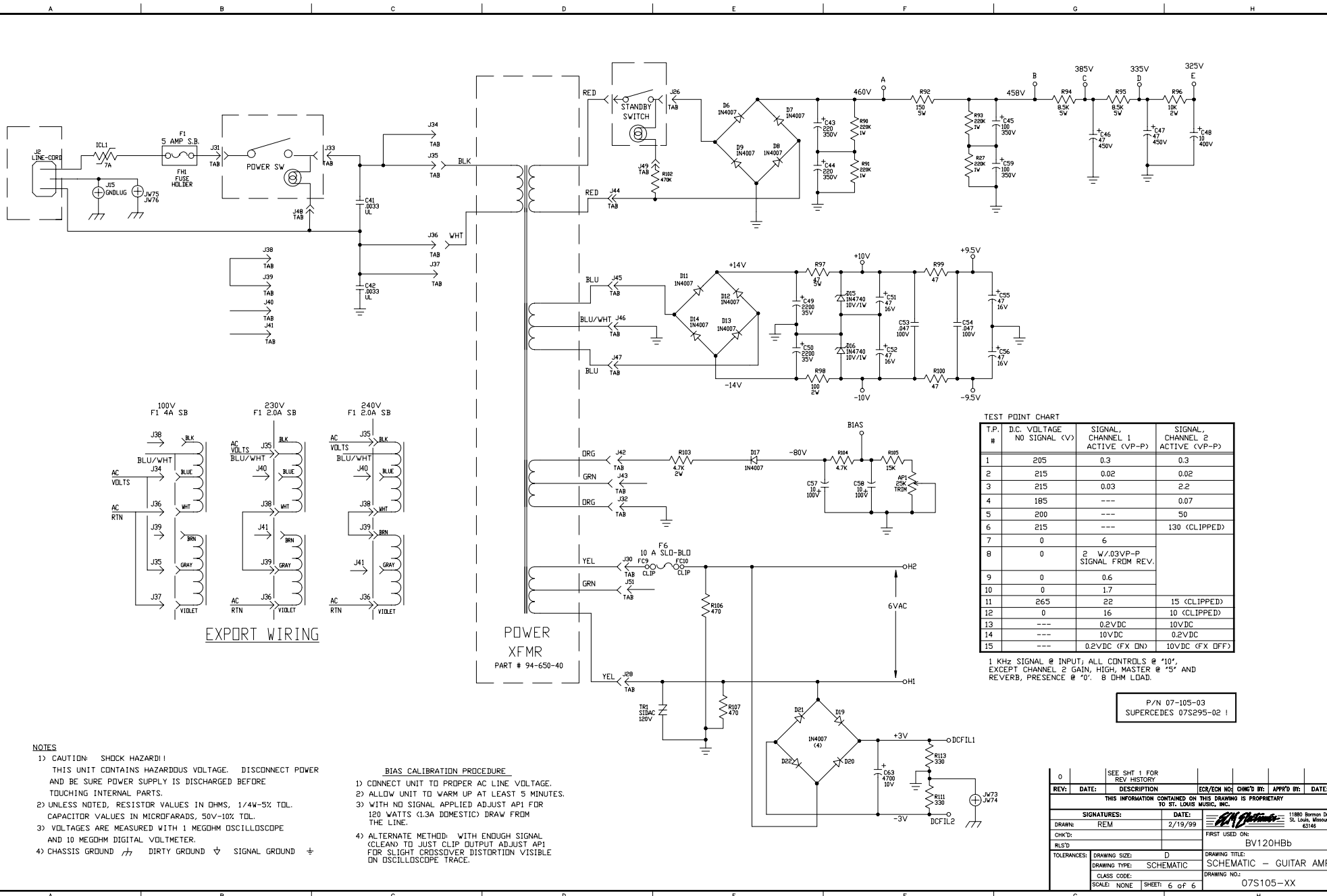
P/N 07-105-01
SUPERCEDES 07S295-01

REV:	DATE:	DESCRIPTION	DRW/ENR NO:	DRWG BY:	APP'D BY:	DATE:
1						
THIS INFORMATION CONTAINED ON THIS DRAWING IS PROPRIETARY TO ST. LOUIS MUSIC, INC.						
SIGNATURES:		DATE:	11880 Roman St., St. Louis, Missouri 63146			
DRW:	REM	2/19/99	B120HBB			
CHK'D:			SCHEMATIC - GUITAR AMP			
RLS'D:			DRAWING NO.: 07S105-XX			
TOLERANCES:		DRAWING SIZE: D	DRAWING TITLE: SCHEMATIC - GUITAR AMP			
		DRAWING TYPE: SCHEMATIC	DRAWING NO.: 07S105-XX			
		CLASS CODE:	SCALE: NONE SHEET: 4 OF 6			



P/N 07-105-03
SUPERCEDES 07S295-02

REV#	DATE	DESCRIPTION	ECR/EDN NO.	CHNG'D BY	APP'D BY	DATE
0		SEE SHT 1 FOR REV HISTORY				
THIS INFORMATION CONTAINED ON THIS DRAWING IS PROPRIETARY TO ST. LOUIS MUSIC, INC.						
SIGNATURES:		DATE:	11800 Burner Dr. St. Louis, Missouri 63146			
DRAWN: REM		2/19/99	[Signature]			
CHK'D:			FIRST USED ON:			
RLS'D			BV120HBb			
TOLERANCES:		DRAWING SIZE: D	DRAWING TITLE: SCHEMATIC - GUITAR AMP			
		DRAWING TYPE: SCHEMATIC	DRAWING NO.:			
		CLASS CODE:	07S105-XX			
		SCALE: NONE	SHEET: 5 OF 6			



EXPORT WIRING

POWER XFMR
PART # 94-650-40

TEST POINT CHART

T.P. #	D.C. VOLTAGE NO SIGNAL (V)	SIGNAL, CHANNEL 1 ACTIVE (VP-P)	SIGNAL, CHANNEL 2 ACTIVE (VP-P)
1	205	0.3	0.3
2	215	0.02	0.02
3	215	0.03	2.2
4	185	---	0.07
5	200	---	50
6	215	---	130 (CLIPPED)
7	0	6	
8	0	2 W/03VP-P SIGNAL FROM REV.	
9	0	0.6	
10	0	1.7	
11	265	22	15 (CLIPPED)
12	0	16	10 (CLIPPED)
13	---	0.2VDC	10VDC
14	---	10VDC	0.2VDC
15	---	0.2VDC (FX DN)	10VDC (FX DFF)

1 KHz SIGNAL @ INPUT; ALL CONTROLS @ "10". EXCEPT CHANNEL 2 GAIN, HIGH, MASTER @ "5" AND REVERB, PRESENCE @ "0". 8 OHM LOAD.

P/N 07-105-03
SUPERCEDES 07S295-02 1

- NOTES**
- 1) CAUTION! SHOCK HAZARD! THIS UNIT CONTAINS HAZARDOUS VOLTAGE. DISCONNECT POWER AND BE SURE POWER SUPPLY IS DISCHARGED BEFORE TOUCHING INTERNAL PARTS.
 - 2) UNLESS NOTED, RESISTOR VALUES IN OHMS, 1/4W-5% TOL. CAPACITOR VALUES IN MICROFARADS, 50V-10% TOL.
 - 3) VOLTAGES ARE MEASURED WITH 1 MEGOHM OSCILLOSCOPE AND 10 MEGOHM DIGITAL VOLTMETER.
 - 4) CHASSIS GROUND ⚡ DIRTY GROUND ⚡ SIGNAL GROUND ⚡

- BIAS CALIBRATION PROCEDURE**
- 1) CONNECT UNIT TO PROPER AC LINE VOLTAGE.
 - 2) ALLOW UNIT TO WARM UP AT LEAST 5 MINUTES.
 - 3) WITH NO SIGNAL APPLIED ADJUST AP1 FOR 120 WATTS (1.3A DOMESTIC) DRAW FROM THE LINE.
 - 4) ALTERNATE METHOD: WITH ENOUGH SIGNAL (CLEAN) TO JUST CLIP OUTPUT ADJUST AP1 FOR SLIGHT CROSSOVER DISTORTION VISIBLE ON OSCILLOSCOPE TRACE.

REV.	DATE:	DESCRIPTION	DR/ENR NO:	CHK'D BY:	APP'D BY:	DATE:
0		SEE SHT 1 FOR REV HISTORY				
THIS INFORMATION CONTAINED ON THIS DRAWING IS PROPRIETARY TO ST. LOUIS MUSIC, INC.						
SIGNATURES:		DATE:	11880 Borman Dr, St. Louis, Missouri 63146			
DRM:	REM	2/19/99	FIRST USED ON: BV120HBB			
CHK'D:						
RLSD:						
TOLERANCES:	DRAWING SIZE: D	DRAWING TITLE: SCHEMATIC - GUITAR AMP	DRAWING NO: 07S105-XX			
	DRAWING TYPE: SCHEMATIC	SCALE: NONE	SHEET: 6 OF 6			