

Customer Service Bulletin

SLM Electronics, Inc. Saint Louis, Missouri

Nov 16, 1998

CSB0007

Units Affected:

Model

Serial Number

Ampeg SVT-3PRO

All (Domestic and Export)

Ampeg SVT-3PRON

ATKDK70001 through ATKDK70148
ATKDK80001 through ATKDK80050
ATKDK90001 through ATKDK90070

Ampeg SVT-3PRONJ

ATKJK80001 through ATKJK80020

Ampeg SVT-3PRONU

ATKUK80001 through ATKUK8010

Ampeg SVT-3PRONW

ATKWK80001 through ATKWK80220

Concern:

Possible excessive strain at 1/4" jacks can cause solder joints to fatigue and break over time.

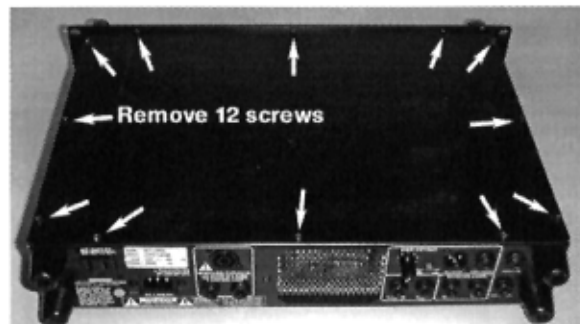
Corrective Actions:

OPTION A - RETURN UNIT FOR MODIFICATION OR REPLACEMENT:

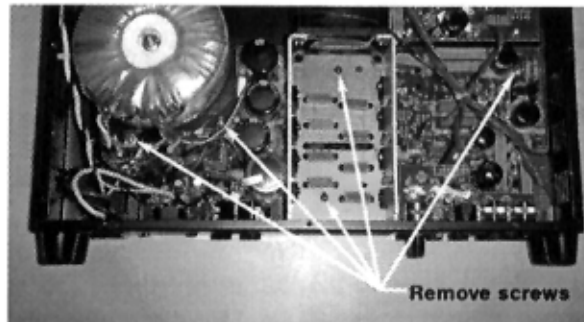
1. To have your unit **modified** and returned to you, contact the SLM Electronics Factory Service Center at **1-800-738-7563**.
2. For **replacement** of your unit contact St. Louis Music at **1-800-727-4512**. (You may talk to your regular inside sales representative.)

OPTION B - MODIFY UNIT:

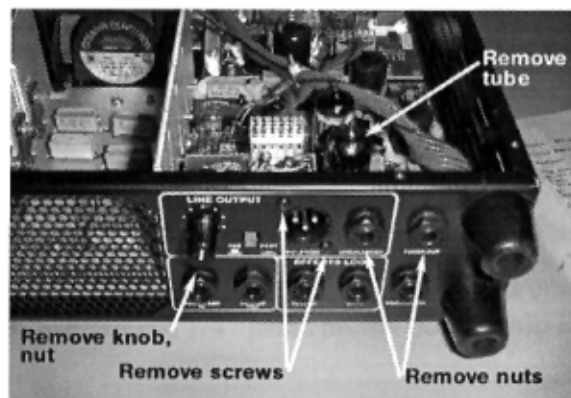
1. Items needed: Spacer kit (part #92-147-01 - contact the SLME Factory Service Center to receive a kit at no charge), #1 phillips screwdriver, #2 phillips screwdriver, 7/16" nutdriver (deep), pliers.
2. Unplug the unit.
3. Remove the 12 screws from the top cover (see photo below). Remove the top cover.



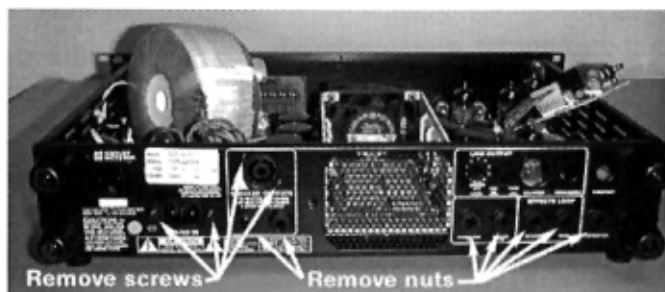
4. Remove the five chassis mount screws from the power amp PCB: one near the diode bridge, one near C17, two on heatsink, one near R9 (see photo below).



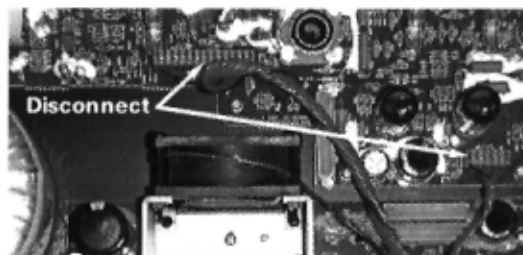
5. Carefully remove the preamp tube nearest to the Line Out PCB (J11 - see photo below). Remove the hardware from the Line Out PCB: knob and nut from level pot, two #1 phillips screws from XLR jack, hex nuts from 1/4" jacks (see photo below). Carefully pull PCB away from rear chassis. Set the carbon washers from the 1/4" jacks aside.



6. Remove the 7/16" nut from the mounting bolt on the large toroidal transformer. Push the bolt through bottom chassis, then carefully set transformer on its side. Don't strain any wiring or let transformer rest against the preamp PCB.
7. Remove the hardware from the power amp PCB: two #2 phillips screws at the AC line in jack, two #1 phillips screws at the Speakon® jack, hex nuts from 1/4" jacks (see photo below).



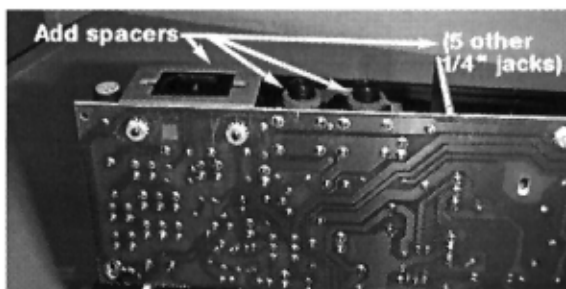
8. Disconnect the wiring harnesses at J5 and J6 of the preamp PCB (see photo below).



9. Carefully pull the main PCB away from the rear chassis, lifting it up until it rests inside the chassis on its cooling fan (see photo below). Be extra careful not to strain any wiring, the PCB or its components. Watch the carbon washers on the 1/4" jacks - if any fall off, replace them.



10. Inspect the 1/4" jacks (J1 through J7) and resolder any joints if necessary.
11. Add the fiber spacer (from the spacer kit) to the AC jack and one additional carbon washer (also from the spacer kit) to each of the 1/4" jacks on the power amp PCB (see photo below).

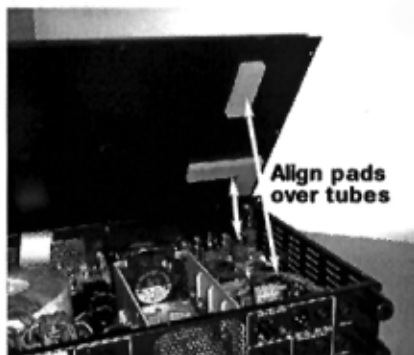


12. Carefully return power amp PCB to its original position, taking care not to let the carbon washers or AC line in spacer fall off (a small piece of tape or a dab of adhesive may be helpful to keep the spacer in place, or tilt the rear of the chassis up during this step). Line up the 1/4" jacks with the holes in the rear chassis and gently work the PCB all the way up against the rear chassis.
13. Reattach the power amp PCB rear panel hardware. Do not overtighten the hex nuts or screws.
14. Replace the carbon washers onto the 1/4" jacks of the line out PCB. Return the PCB to its original location and reattach its rear panel hardware. Do not overtighten the hex nuts or screws.

15. Reconnect the wiring harnesses at J5 and J6. See the photo under step 8 for locations/orientation.
16. Replace the five chassis mount screws into the power amp PCB as follows: the three longer screws go into the lug near the diode bridge and into the heatsink; the two shorter screws go into the holes near C17 and R9.
NOTE: On units with an AC outlet, secure the ground lug of the green wire over the tab on the PCB with the mounting screw (see photo below).



17. Return the large transformer to its original position. Insert mounting bolt from underside of chassis through transformer, add washer and hex nut. Thoroughly tighten the hex nut.
18. Carefully replace the preamp tube at J11.
19. Check everything: spacer on AC line in jack, two carbon washers on each 1/4" jack (power amp PCB only), one carbon washer on each 1/4" jack (line out PCB), wire harnesses properly reconnected, transformer securely reinstalled, preamp tube fully and properly seated, chassis mount screws and AC outlet ground lug (where applicable) reinstalled, all mounting screws reinstalled.
20. Replace top cover - align pads on cover over preamp tubes (see photo below).



21. Replace the top cover screws. Do not overtighten.

SLM Electronics, A Division of St. Louis Music, Inc.
11880 Borman Drive, St. Louis, MO 63146
Phone (314) 569-0141
Service Department: Phone (800) 738-7563; Fax (314) 567-7278