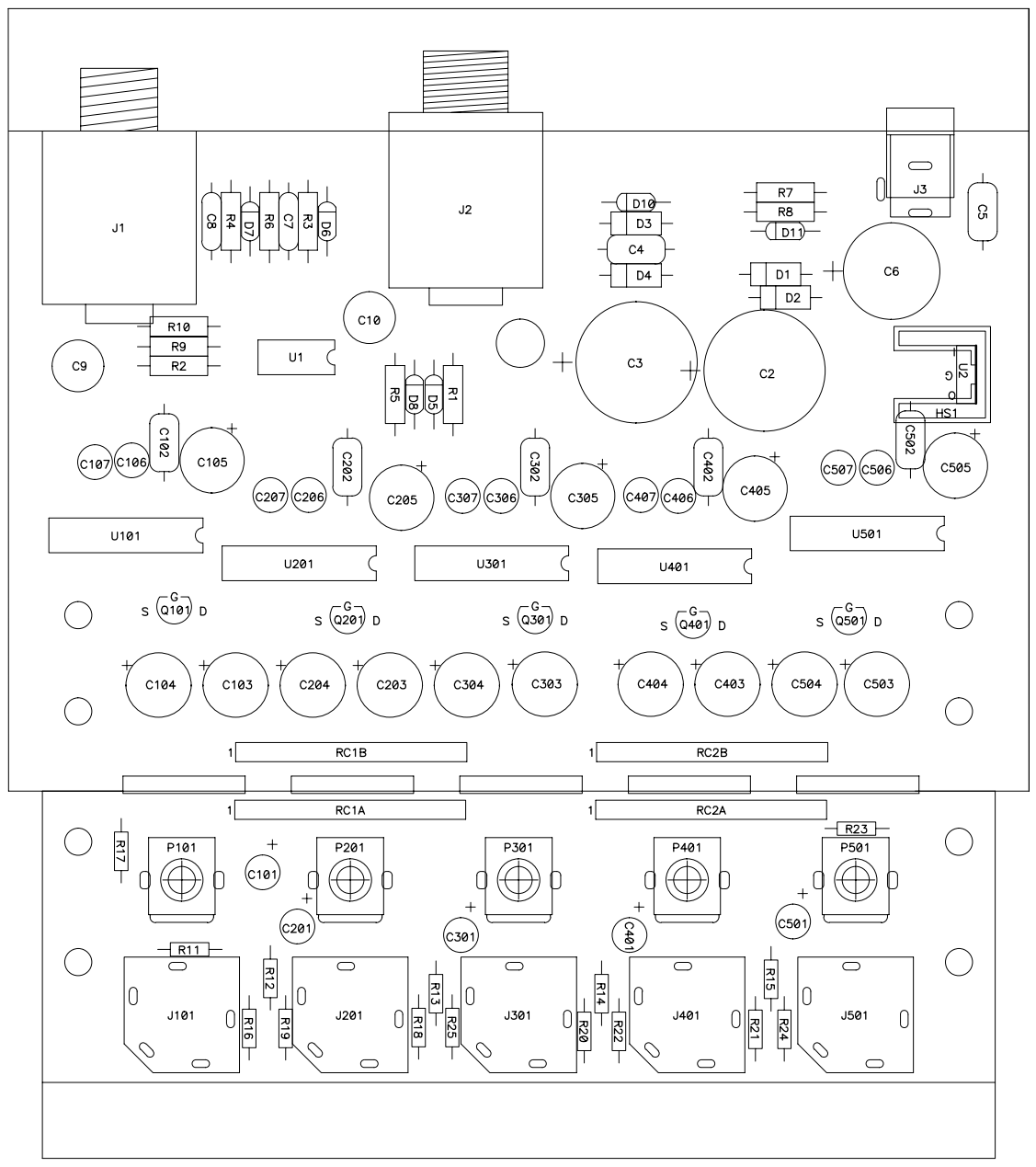



A B C D

ASSEMBLY PART NUMBER: 07-656-01
 SEE SCHEMATIC NUMBER: 07S656-XX



NOTES:
 1. GOOP IN ACCORDANCE WITH PRODUCTION S.O.P.

CAUTION:
 THIS ASSEMBLY DRAWING IS PROVIDED FOR USE BY QUALIFIED PERSONNEL.
 TO AVOID RISK OF ELECTRIC SHOCK, REFER SERVICING TO QUALIFIED SERVICE PERSONNEL.
 DO NOT PERFORM ANY SERVICING BEYOND THAT EXPLAINED IN THE OPERATING INSTRUCTIONS.

REV	Date	DESCRIPTION	Ecr(s)/Ecn(s)	Chgd By	Appvd by	Date
A	2-15-99	CONTROL ISSUE				
THE INFORMATION CONTAINED ON THIS DRAWING IS PROPRIETARY TO ST. LOUIS MUSIC, INC.						
Signatures:		Date:		 11888 Borman Drive, St. Louis, MO 63146		
Drawn: WFB		08/03/98				
Checked: JP		11/13/98				
Released:						
Tolerance:		Drawing Size: B		Drawing Title: 5X SMALL SIGNAL STEREO AMP		
		Drawing Type: ASSEMBLY		Class Code: NONE		
		Sheet 1 of 1		Drawing Number: 07P656-XX		

A B C D

0	1/29/99	CONTROL ISSUE				
Rev.	Date	DESC.	ECR(s)/ECN(s)	Chgd by	Appvd by	DATE
THE INFORMATION CONTAINED ON THIS DRAWING IS PROPRIETARY TO						
ST. LOUIS MUSIC, INC.						
			SLM Electronics 11880 Borman Drive, St. Louis, MO 63141			
Signatures:		Date:				
Drawn: WFB		8/24/98				
Checked:			First Used On:	SM5HPa		
Released:						
Tolerance:	Drawing Size:	A	Drawing Title:	5X SMALL SIGNAL STEREO AMP		
	Drawing Type:	PL				
	Class Code:		Drawing No.:	07-656-PL		
	Scale:	N/A				

ASSEMBLY PART #

07-656-01

REVISION 0

ITEM	QTY	REFDES	P/N	DESC
1	1	PWB1	06A656-01	5X SMALL SIGNAL AMP
2	7	C4	10A104-01	.1 uF 50V 10% X7R
		C5		
		C102		
		C202		
		C302		
		C402		
		C502		
3	2	C7	10A560-21	56 pF 200V 5% NPO
		C8		
4	1	C6	12-228-16	2200 uF 16V 20% EL
5	2	C2	12-228-26	2200 uF 25V 20% EL
		C3		
6	5	C101	12R105-50	1 uF 50V 20% EL
		C201		
		C301		
		C401		
		C501		
7	10	C106	12R105-51	1 uF 50V 20% EL NP
		C107		
		C206		
		C207		
		C306		
		C307		
		C406		
		C407		
		C506		
		C507		
8	2	C9	12R226-82	22 uF 16V 20% EL NP
		C10		
9	5	C105	12R227-12	220 uF 16V 20% EL
		C205		
		C305		
		C405		
		C505		
10	10	C103	12R477-16	470uF 16V 20% EL
		C104		
		C203		
		C204		
		C303		
		C304		
		C403		
		C404		
		C503		
		C504		
11	4	D1	21A402-01	100V PIV 1A .5W
		D2		
		D3		
		D4		

ASSEMBLY PART #

07-656-01

REVISION 0

ITEM	QTY	REFDES	P/N	DESC
12	1	D10	21A754-01	6.8V .5W ZENER 5 ohm Zz
13	5	D5	21A914-01	75V PIV 10mA/1V .5W
		D6		
		D7		
		D8		
		D11		
14	1	HS1	33-576-01	TO-220 CLIP-ON AAVID
15	1	U1	37-072-01	TLO-72CP DUAL OP-AMP
16	1	U2	37-715-01	UA7815CKC +15V 1A REGULATOR
17	5	U101	37-753-01	TDA7053A STEREO PWRAMP 2X1 W
		U201		
		U301		
		U401		
		U501		
18	5	J101	39-114-04	VERT TRS JACK W/SHUNTS L.S.
		J201		
		J301		
		J401		
		J501		
19	1	J1	39-116-01	T/S JACK HORIZ
20	1	J2	39-117-51	T/R/S JACK W/GND WASHER
21	1	J3	39-202-01	MALE POWER JACK 2MM
22	5	P101	70-254-09	250KA 9mmX30mmLX12mm
		P201		
		P301		
		P401		
		P501		
23	5	R11	76-103-21	10K OHM .125W 5% RESISTOR
		R12		
		R13		
		R14		
		R15		
24	6	R1	76-104-01	100K OHM .25W 5% RESISTOR
		R3		
		R4		
		R6		
		R9		
		R10		
25	1	R7	76-223-01	22K OHM .25W 5% RESISTOR
26	2	R2	76-224-01	220K OHM .25W 5% RESISTOR
		R5		
27	1	R8	76-225-01	2.2M OHM .25W 5% RESISTOR
28	10	R16	76-472-21	4.7K OHM .125W 5% RESISTOR
		R17		
		R18		
		R19		
		R20		
		R21		
		R22		
		R23		

ASSEMBLY PART #

07-656-01

REVISION 0

ITEM	QTY	REFDES	P/N	DESC
		R24		
		R25		
29	5	Q101	96-175-01	J175 P-CH 30Vds 3Vgs(off) 125ohmRdsON
		Q201		
		Q301		
		Q401		
		Q501		
30	2	RC1A	99-137-01	60MM 26AWG 12PIN BER 88197-12A1
		RC2A		
31	0		0	0