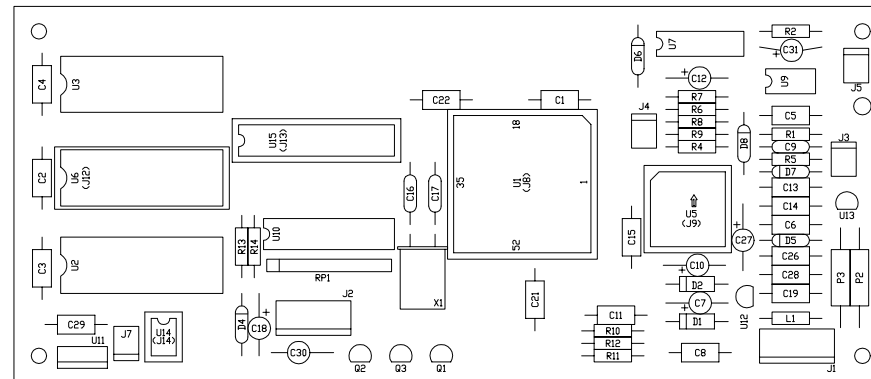


NEW VERSION



DESIGNATOR PART NUMBER DESCRIPTION

C1	10A104-01	.1uF	50V	J1	17-100-06	6 PIN .100"	HEADER	U1	37-801-80	ADSP2105KP80
C2	10A104-01	.1uF	50V	J2	17-100-06	6 PIN .100"	HEADER	U2	37-871-01	UM62256A
C3	10A104-01	.1uF	50V	J3	17-102-02	2 PIN .100"	HEADER	U3	37-871-01	UM62256A
C4	10A104-01	.1uF	50V	J4	17-102-02	2 PIN .100"	HEADER	U5	37-811-01	TLC32046
C5	10A473-11	.047uF	100V	J5	17-102-02	2 PIN .100"	HEADER	U6	***	27PC256
C6	10A104-01	.1uF	50V	J7	17-102-02	2 PIN .100"	HEADER	U7	37-714-01	74HC14
C7	12-225-81	2.2uF	50V	J8	17-460-68	68PIN PLCC	SOCKET	U9	37-072-01	TL072
C8	10A104-01	.1uF	50V	J9	17-460-29	28PIN PLCC	SOCKET	U10	37-741-01	74HC541
C9	10A472-11	.0047uF	100V	J12	17-460-28	28PIN DIP	SOCKET	U11	37-705-01	78M05
C10	12-105-81	.1uF	50V	J13	17-460-24	24PIN DIP	SOCKET	U12	37-905-02	79L05
C11	10A224-01	.22uF	50V	J14	17-460-08	8 PIN DIP	SOCKET	U13	37-705-02	78L05
C12	12-106-81	10uF	50V	R1	76-102-01	1K		U14	*1*	SEE TABLE
C13	10A224-01	.22uF	50V	R2	76-271-01	270		U15	38A80101(X)	PRGMD PAL 20V8
C14	10A224-01	.22uF	50V	R4	76-512-02	5.11K	1/4W-1%	X1	37-900-10	10MHz
C15	10A104-01	.1uF	50V	R5	76-105-01	1M		Q1	96-112-01	J112
C16	10A330-21	33pF	200V	R6	76-512-02	5.11K	1/4W-1%	Q2	96-112-01	J112
C17	10A330-21	33pF	200V	R7	76-512-02	5.11K	1/4W-1%	Q3	96-112-01	J112
C18	12-106-81	10uF	50V	R8	76-512-02	5.11K	1/4W-1%	L1	94A001-01	FERRITE BEAD
C19	10A104-01	.1uF	50V	R9	76-471-01	470				
C21	10A104-01	.1uF	50V	RP1	78N104-09	100K	R_NETWORK			
C22	10A104-01	.1uF	50V	R10	76-104-01	100K				
C26	10A104-01	.1uF	50V	R11	76-104-01	100K				
C27	12-105-81	.1uF	50V	R12	76-104-01	100K				
C28	10A104-01	.1uF	50V	R13	76-103-01	10K				
C29	10A104-01	.1uF	50V	R14	76-103-01	10K				
C30	12-106-32	10uF	35V	P2	78-470-01	47	1W			
C31	12-105-81	.1uF	50V	P3	78-470-01	47	1W			

D1	21A819-01	1N5819	1A/40V
D2	21A819-01	1N5819	1A/40V
D4	21A402-01	1N4002	100V
D5	21A402-01	1N4002	100V
D6	21A402-01	1N4002	100V
D7	21A914-01	1N914	100V
D8	21A914-01	1N914	100V

07 LEVEL	UNIT	*** EPROM #	*1* U14
07-801-01	GT-80DSP	38-80101(X)	37-884-01 (X24C01)
07-801-02	GT-200D	38-80102(X)	37-884-02 (X24C01A)
07-801-03	GT-200DH	38-80103(X)	37-884-02 (X24C01A)
07-801-04	GX-40D	38-80104(X)	37-884-01 (X24C01)
07-801-05	GX-140D	38-80105(X)	37-884-02 (X24C01A)
07-801-11	PCM-8D	38-80111(X)	NOT APPLICABLE
07-801-12	CA-125D	38-80112(X)	NOT APPLICABLE
07-801-16	PX-600DLX	38-80116(X)	NOT APPLICABLE

** NOTE - EPROM NUMBERS REPRESENT CURRENT REVISION LEVELS.
HIGHER REVISION LEVELS WILL RETROFIT.
(X) SUFFIX REPRESENT REVISION LEVEL.

UNLESS NOTED, RESISTOR VALUES IN OHMS, 1/4W-5% TOL.
CAPACITOR VALUES IN MICROFARADS, 50V-10% TOL.

07-801-11 PCM-8D
07-801-12 CA-125D
07-801-16 PX-600DLX

DELETED PARTS

J5 J6 J14
Q1 Q2 Q3

9				
8	12-18-97	RLB		REPLACED C7,10,12,18,27,30,31 WITH 12-XXX-XX PER ECO E970806
7	04/18/97	MAG		ADDED 07-801-05 TO TABLE PER ECO 970187.
6	12/10/96	SWR		CHANGED P/N FOR "U1" PER ECO #960504.
5	05/19/95	JCJ/ERW		REDESIGNED PER ECO #492 & #504, ADDED PX-600DLX EPROM # TO 07 LEVEL PER ECO #E0XXX.
4				UNKNOWN
3	04/05/94	ERW		CHANGED PARTS LIST- RP1 PART# TO 78N104-09 AND VALUE OF C10 TO 10uF.
2	03/18/93	ERW		ADDED U14 PART # AND DESCRIPTION TO TABLE
1	01/21/93	MGA		ADD 38-XXX-XX EPROM NUMBERS
REV	DATE	BY	CHK'D	DESCRIPTION

SIGNATURES:		DATE:	11880 BORMAN DR. ST. LOUIS, MISSOURI 63146	
DRAWN:	MGA	04/16/92	PROJECT NAME:	
CHK'D:	G.G.	05/27/92	DSP BOARD	
APP'D:	G.G.	05/27/92	DRAWING NAME:	
ORIGINAL ISSUED:	05/27/92	PICTORIAL DRAWING		
PLOT DATE:	12/18/97	DRAWING NO.:	07P801-XX	REV. 8
PLOT TIME:	08:22:12	SCALE:	1:1	SHEET: 1 OF 2
FILE NAME:	80101P8_			