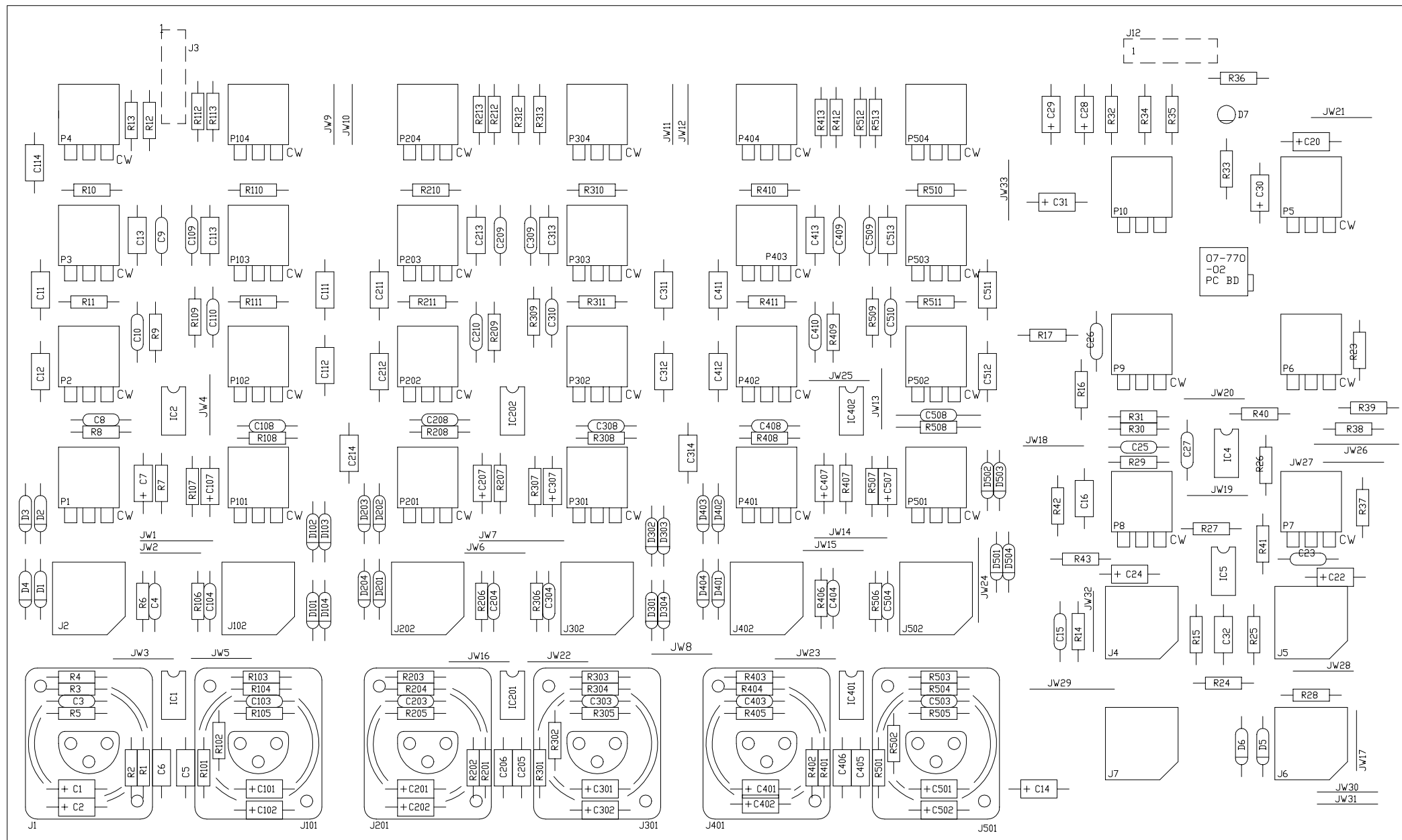


DESIGNATOR	PART #	DESCRIPTION	DESIGNATOR	PART #	DESCRIPTION
P302	70-503-81	50KL	R203	76-103-02	10.0K 1%
P303	70-503-81	50KL	R204	76-103-02	10.0K 1%
P304	70-503-81	50KL	R205	76-233-02	23.2K 1%
P401	70-503-81	50KL	R206	76-233-02	23.2K 1%
P402	70-503-81	50KL	R207	76-102-01	1K
P403	70-503-81	50KL	R208	76-224-01	220K
P404	70-503-81	50KL	R209	76-472-01	4.7K
P501	70-503-81	50KL	R210	76-221-01	220
P502	70-503-81	50KL	R211	76-222-01	2.2K
P503	70-503-81	50KL	R212	76-472-01	4.7K
P504	70-503-81	50KL	R213	76-183-01	18K
R1	76-102-02	1.0K 1%	R301	76-102-02	1.0K 1%
R2	76-102-02	1.0K 1%	R302	76-102-02	1.0K 1%
R3	76-103-02	10.0K 1%	R303	76-103-02	10.0K 1%
R4	76-103-02	10.0K 1%	R304	76-103-02	10.0K 1%
R5	76-233-02	23.2K 1%	R305	76-233-02	23.2K 1%
R6	76-233-02	23.2K 1%	R306	76-233-02	23.2K 1%
R7	76-102-01	1K	R307	76-102-01	1K
R8	76-224-01	220K	R308	76-224-01	220K
R9	76-472-01	4.7K	R309	76-472-01	4.7K
R10	76-221-01	220	R310	76-221-01	220
R11	76-222-01	2.2K	R311	76-222-01	2.2K
R12	76-472-01	4.7K	R312	76-472-01	4.7K
R13	76-183-01	18K	R313	76-183-01	18K
R14	76-472-01	4.7K	R401	76-102-02	1.0K 1%
R15	76-152-01	1.5K	R402	76-102-02	1.0K 1%
R16	76-223-01	22K	R403	76-103-02	10.0K 1%
R17	76-473-01	47K	R404	76-103-02	10.0K 1%
R18	76-103-01	10K	R405	76-233-02	23.2K 1%
R19	76-220-01	22	R406	76-233-02	23.2K 1%
R20	76-103-01	10K	R407	76-102-01	1K
R21	76-183-01	18K	R408	76-224-01	220K
R22	76-681-01	680	R409	76-472-01	4.7K
R23	76-473-01	47K	R410	76-221-01	220
R24	76-472-01	4.7K	R411	76-222-01	2.2K
R25	76-472-01	4.7K	R412	76-472-01	4.7K
R26	76-472-01	4.7K	R413	76-183-01	18K
R27	76-272-01	2.7K	R501	76-102-02	1.0K 1%
R28	76-152-01	1.5K	R502	76-102-02	1.0K 1%
R29	76-823-01	82K	R503	76-103-02	10.0K 1%
R30	76-154-01	150K	R504	76-103-02	10.0K 1%
R31	76-272-01	2.7K	R505	76-233-02	23.2K 1%
R32	76-100-01	10	R506	76-233-02	23.2K 1%
R33	76-100-01	10	R507	76-102-01	1K
R34	76-100-01	10	R508	76-224-01	220K
R35	76-100-01	10	R509	76-472-01	4.7K
R36	76-222-01	2.2K	R510	76-221-01	220
R37	76-100-01	10	R511	76-222-01	2.2K
R38	76-272-02	2.74K 1%	R512	76-472-01	4.7K
R39	76-272-02	2.74K 1%	R513	76-183-01	18K
R40	76-272-02	2.74K 1%			
R41	76-272-02	2.74K 1%			
R42	76-331-01	330			
R43	76-331-01	330			
R44	76-473-01	47K			
R101	76-102-02	1.0K 1%			
R102	76-102-02	1.0K 1%			
R103	76-103-02	10.0K 1%			
R104	76-103-02	10.0K 1%			
R105	76-233-02	23.2K 1%			
R106	76-233-02	23.2K 1%			
R107	76-102-01	1K			
R108	76-224-01	220K			
R109	76-472-01	4.7K			
R110	76-221-01	220			
R111	76-222-01	2.2K			
R112	76-472-01	4.7K			
R113	76-183-01	18K			
R201	76-102-02	1.0K 1%			
R202	76-102-02	1.0K 1%			

DESIGNATOR	PART #	DESCRIPTION	DESIGNATOR	PART #	DESCRIPTION	DESIGNATOR	PART #	DESCRIPTION	DESIGNATOR	PART #	DESCRIPTION
C1	12A106-11	10uF 16V	C104	10A101-21	100pF 200V	C401	12A106-11	10uF 16V	D104	21A914-01	1N914
C2	12A106-11	10uF 16V	C107	12A106-11	10uF 16V	C402	12A106-11	10uF 16V	D201	21A914-01	1N914
C3	10A101-21	100pF 200V	C108	10A500-21	50pF 200V	C403	10A101-21	100pF 200V	D202	21A914-01	1N914
C4	10A101-21	100pF 200V	C109	10A103-11	.01 100V	C404	10A101-21	100pF 200V	D203	21A914-01	1N914
C5	10A104-01	.1 50V	C110	10A223-01	.022 50V	C405	10A104-01	.1 50V	D204	21A914-01	1N914
C6	10A104-01	.1 50V	C111	10A104-01	.1 50V	C406	10A104-01	.1 50V	D301	21A914-01	1N914
C7	12A106-11	10uF 16V	C112	10A104-01	.1 50V	C407	12A106-11	10uF 16V	D302	21A914-01	1N914
C8	10A560-21	56pF 200V	C113	10A473-11	.047 100V	C408	10A500-21	50pF 200V	D303	21A914-01	1N914
C9	10A103-11	.01 100V	C114	10A473-11	0.047 100V	C409	10A103-11	.01 100V	D304	21A914-01	1N914
C10	10A223-01	.022 50V	C201	12A106-11	10uF 16V	C410	10A223-01	.022 50V	D401	21A914-01	1N914
C11	10A104-01	.1 50V	C202	12A106-11	10uF 16V	C411	10A104-01	.1 50V	D402	21A914-01	1N914
C12	10A104-01	.1 50V	C203	10A101-21	100pF 200V	C412	10A104-01	.1 50V	D403	21A914-01	1N914
C13	10A473-11	.047 100V	C204	10A101-21	100pF 200V	C413	10A473-11	.047 100V	D404	21A914-01	1N914
C14	12A106-11	10uF 16V	C205	10A104-01	.1 50V	C501	12A106-11	10uF 16V	D501	21A914-01	1N914
C15	10A560-21	56pF 200V	C206	10A104-01	.1 50V	C502	12A106-11	10uF 16V	D502	21A914-01	1N914
C16	10A104-01	.1uF 50V	C207	12A106-11	10uF 16V	C503	10A101-21	100pF 200V	D503	21A914-01	1N914
C18	10A102-11	.001 100V	C208	10A500-21	50pF 200V	C504	10A101-21	100pF 200V	D504	21A914-01	1N914
C19	12A106-11	10uF 16V	C209	10A103-11	.01 100V	C507	12A106-11	10uF 16V	IC1	37-458-01	RC4558
C20	12A106-11	10uF 16V	C210	10A223-01	.022 50V	C508	10A500-21	50pF 200V	IC2	37-458-01	RC4558
C21	12A106-11	10uF 16V	C211	10A104-01	.1 50V	C509	10A103-11	.01 100V	IC3	37-458-01	RC4558
C22	12A106-11	10uF 16V	C212	10A104-01	.1 50V	C510	10A103-11	.01 100V	IC4	37-458-01	RC4558
C23	10A330-21	33pF 200V	C213	10A473-11	.047 100V	C511	10A104-01	.1 50V	IC5	37-458-01	RC4558
C24	12A106-11	10uF 16V	C214	10A473-11	0.047 100V	C512	10A104-01	.1 50V	IC201	37-458-01	RC4558
C25	10A103-11	.01 100V	C301	12A106-11	10uF 16V	C513	10A473-11	.047 100V	IC202	37-458-01	RC4558
C26	10A471-11	470pF 100V	C302	12A106-11	10uF 16V	D1	21A914-01	1N914	IC203	37-458-01	RC4558
C27	10A150-21	15pF 200V	C303	10A101-21	100pF 200V	D2	21A914-01	1N914	IC401	37-458-01	RC4558
C28	12A106-11	10uF 16V	C304	10A101-21	100pF 200V	D3	21A914-01	1N914	IC402	37-458-01	RC4558
C29	12A106-11	10uF 16V	C307	12A106-11	10uF 16V	D4	21A914-01	1N914			
C30	12A106-11	10uF 16V	C308	10A500-21	50pF 200V	D5	21A914-01	1N914			
C31	12A106-11	10uF 16V	C309	10A103-11	.01 100V	D6	21A914-01	1N914			
C32	12A106-11	10uF 16V	C310	10A223-01	.022 50V	D7	21A914-01	1N914			
C101	12A106-11	10uF 16V	C311	10A104-01	.1 50V	D101	21A914-01	1N914			
C102	12A106-11	10uF 16V	C312	10A104-01	.1 50V	D102	21A914-01	1N914			
C103	10A101-21	100pF 200V	C314	10A473-11	0.047 100V	D103	21A914-01	1N914			

ASSY # 07-649-01

2					
1	2-25-99	RLB		ADDED -02 (PAGE 2)	
0				ORIGINAL ISSUE	
REV	DATE	BY	CHK'D	DESCRIPTION	
SIGNATURES:		DATE:		11850 BORMAN DR. ST. LOUIS, MISSOURI 63148	
DRAWN:	MGA	02/01/99		PROJECT NAME:	
CHK'D:	DJR	02/01/99		PA-6/8 BOX MIXER	
APP'D:	DJR	02/01/99		DRAWING NAME:	
ORIGINAL ISSUED:		02/01/99		CHANNEL/MASTER BOARD	
PLOT DATE:		02/26/99		DRAWING NO. 07P649-XX	
PLOT TIME:		12:49:50		SHEET: 1 OF 2	
FILE NAME:		64999P0_		SCALE: NONE	



DESIGNATOR	PART #	DESCRIPTION	DESIGNATOR	PART #	DESCRIPTION
P302	70-503-81	50KL	R203	76-103-02	10.0K 1%
P303	70-503-81	50KL	R204	76-103-02	10.0K 1%
P304	70-503-81	50KL	R205	76-233-02	23.2K 1%
P401	70-503-81	50KL	R206	76-233-02	23.2K 1%
P402	70-503-81	50KL	R207	76-102-01	1K
P403	70-503-81	50KL	R208	76-224-01	220K
P404	70-503-81	50KL	R209	76-472-01	4.7K
P501	70-503-81	50KL	R210	76-221-01	220
P502	70-503-81	50KL	R211	76-222-01	2.2K
P503	70-503-81	50KL	R212	76-472-01	4.7K
P504	70-503-81	50KL	R213	76-183-01	18K
R1	76-102-02	1.0K 1%	R301	76-102-02	1.0K 1%
R2	76-102-02	1.0K 1%	R302	76-102-02	1.0K 1%
R3	76-103-02	10.0K 1%	R303	76-103-02	10.0K 1%
R4	76-103-02	10.0K 1%	R304	76-103-02	10.0K 1%
R5	76-233-02	23.2K 1%	R305	76-233-02	23.2K 1%
R6	76-233-02	23.2K 1%	R306	76-233-02	23.2K 1%
R7	76-102-01	1K	R307	76-102-01	1K
R8	76-224-01	220K	R308	76-224-01	220K
R9	76-472-01	4.7K	R309	76-472-01	4.7K
R10	76-221-01	220	R310	76-221-01	220
R11	76-222-01	2.2K	R311	76-222-01	2.2K
R12	76-472-01	4.7K	R312	76-472-01	4.7K
R13	76-183-01	18K	R313	76-183-01	18K
R14	76-102-02	1.0K 1%	R401	76-102-02	1.0K 1%
R15	76-473-01	47K	R402	76-102-02	1.0K 1%
R16	76-152-01	1.5K	R403	76-103-02	10.0K 1%
R17	76-223-01	22K	R404	76-103-02	10.0K 1%
R18	76-473-01	47K	R405	76-233-02	23.2K 1%
R19	76-183-01	18K	R406	76-233-02	23.2K 1%
R20	76-472-01	4.7K	R407	76-102-01	1K
R21	76-472-01	4.7K	R408	76-224-01	220K
R22	76-472-01	4.7K	R409	76-472-01	4.7K
R23	76-272-01	2.7K	R410	76-221-01	220
R24	76-152-01	1.5K	R411	76-222-01	2.2K
R25	76-823-01	82K	R412	76-472-01	4.7K
R26	76-154-01	150K	R413	76-183-01	18K
R27	76-272-01	2.7K	R501	76-102-02	1.0K 1%
R28	76-272-01	2.7K	R502	76-102-02	1.0K 1%
R29	76-272-02	2.74K 1%	R503	76-103-02	10.0K 1%
R30	76-272-02	2.74K 1%	R504	76-103-02	10.0K 1%
R31	76-272-02	2.74K 1%	R505	76-233-02	23.2K 1%
R32	76-272-02	2.74K 1%	R506	76-233-02	23.2K 1%
R33	76-331-01	330	R507	76-102-01	1K
R34	76-331-01	330	R508	76-224-01	220K
R35	76-331-01	330	R509	76-472-01	4.7K
R36	76-331-01	330	R510	76-221-01	220
R37	76-331-01	330	R511	76-222-01	2.2K
R38	76-331-01	330	R512	76-472-01	4.7K
R39	76-331-01	330	R513	76-183-01	18K
R40	76-102-02	1.0K 1%			
R41	76-102-02	1.0K 1%			
R42	76-103-02	10.0K 1%			
R43	76-103-02	10.0K 1%			
R44	76-233-02	23.2K 1%			
R45	76-233-02	23.2K 1%			
R46	76-102-01	1K			
R47	76-224-01	220K			
R48	76-472-01	4.7K			
R49	76-221-01	220			
R50	76-222-01	2.2K			
R51	76-472-01	4.7K			
R52	76-472-01	4.7K			
R53	76-183-01	18K			

DESIGNATOR	PART #	DESCRIPTION	DESIGNATOR	PART #	DESCRIPTION
R101	76-102-02	1.0K 1%			
R102	76-102-02	1.0K 1%			
R103	76-103-02	10.0K 1%			
R104	76-103-02	10.0K 1%			
R105	76-233-02	23.2K 1%			
R106	76-233-02	23.2K 1%			
R107	76-102-01	1K			
R108	76-224-01	220K			
R109	76-472-01	4.7K			
R110	76-221-01	220			
R111	76-222-01	2.2K			
R112	76-472-01	4.7K			
R113	76-183-01	18K			
R201	76-102-02	1.0K 1%			
R202	76-102-02	1.0K 1%			

NOTE: PARTS NOT USED C18, C19, IC3, J8-J11, R18-22, R44.

DESIGNATOR	PART #	DESCRIPTION	DESIGNATOR	PART #	DESCRIPTION	DESIGNATOR	PART #	DESCRIPTION	DESIGNATOR	PART #	DESCRIPTION
C1	12A106-11	10uF 16V	C104	10A101-21	100pF 200V	C401	12A106-11	10uF 16V	D104	21A914-01	1N914
C2	12A106-11	10uF 16V	C107	12A106-11	10uF 16V	C402	12A106-11	10uF 16V	D201	21A914-01	1N914
C3	10A101-21	100pF 200V	C108	10A500-21	50pF 200V	C403	10A101-21	100pF 200V	D202	21A914-01	1N914
C4	10A101-21	100pF 200V	C109	10A103-11	.01 100V	C404	10A101-21	100pF 200V	D203	21A914-01	1N914
C5	10A104-01	.1 50V	C110	10A223-01	.022 50V	C405	10A104-01	.1 50V	D204	21A914-01	1N914
C6	10A104-01	.1 50V	C111	10A104-01	.1 50V	C406	10A104-01	.1 50V	D301	21A914-01	1N914
C7	12A106-11	10uF 16V	C112	10A104-01	.1 50V	C407	12A106-11	10uF 16V	D302	21A914-01	1N914
C8	10A560-21	56pF 200V	C113	10A473-11	0.47 100V	C408	10A500-21	50pF 200V	D303	21A914-01	1N914
C9	10A103-11	.01 100V	C114	10A473-11	0.47 100V	C409	10A103-11	.01 100V	D304	21A914-01	1N914
C10	10A223-01	.022 50V	C201	12A106-11	10uF 16V	C410	10A223-01	.022 50V	D401	21A914-01	1N914
C11	10A104-01	.1 50V	C202	12A106-11	10uF 16V	C411	10A104-01	.1 50V	D402	21A914-01	1N914
C12	10A104-01	.1 50V	C203	10A101-21	100pF 200V	C412	10A104-01	.1 50V	D403	21A914-01	1N914
C13	10A473-11	0.47 100V	C204	10A101-21	100pF 200V	C413	10A473-11	0.47 100V	D404	21A914-01	1N914
C14	12A106-11	10uF 16V	C205	10A104-01	.1 50V	C501	12A106-11	10uF 16V	D501	21A914-01	1N914
C15	10A560-21	56pF 200V	C206	10A104-01	.1 50V	C502	12A106-11	10uF 16V	D502	21A914-01	1N914
C16	10A104-01	.1 50V	C207	12A106-11	10uF 16V	C503	10A101-21	100pF 200V	D503	21A914-01	1N914
C17	12A106-11	10uF 16V	C208	10A500-21	50pF 200V	C504	10A101-21	100pF 200V	D504	21A914-01	1N914
C18	12A106-11	10uF 16V	C209	10A103-11	.01 100V	C507	12A106-11	10uF 16V			
C19	10A330-21	33pF 200V	C210	10A223-01	.022 50V	C508	10A500-21	50pF 200V			
C20	12A106-11	10uF 16V	C211	10A104-01	.1 50V	C509	10A103-11	.01 100V			
C21	12A106-11	10uF 16V	C212	10A104-01	.1 50V	C510	10A223-01	.022 50V			
C22	10A471-11	470pF 100V	C213	10A473-11	0.47 100V	C511	10A104-01	.1 50V			
C23	10A150-21	15pF 200V	C214	10A473-11	0.47 100V	C512	10A104-01	.1 50V			
C24	12A106-11	10uF 16V	C301	12A106-11	10uF 16V	C513	10A473-11	0.47 100V			
C25	10A103-11	.01 100V	C302	12A106-11	10uF 16V						
C26	10A471-11	470pF 100V	C303	10A101-21	100pF 200V						
C27	10A150-21	15pF 200V	C304	10A101-21	100pF 200V						
C28	12A106-11	10uF 16V	C307	12A106-11	10uF 16V						
C29	12A106-11	10uF 16V	C308	10A500-21	50pF 200V						
C30	12A106-11	10uF 16V	C309	10A103-11	.01 100V						
C31	12A106-11	10uF 16V	C310	10A223-01	.022 50V						
C32	10A473-11	0.47 100V	C311	10A104-01	.1 50V						
C33	12A106-11	10uF 16V	C312	10A104-01	.1 50V						
C34	12A106-11	10uF 16V	C313	10A104-01	.1 50V						
C35	10A101-21	100pF 200V	C314	10A473-11	0.47 100V						

DESIGNATOR	PART #	DESCRIPTION	DESIGNATOR	PART #	DESCRIPTION
D101	21A914-01	1N914	J1	39-312-01	RE-AN X702-03 FEM XLR
D102	21A914-01	1N914	J2	39-114-02	114BPC 1/4" JACK
D103	21A914-01	1N914	J3	17-310-05	MPSS156-5-D HEADER
D104	21A914-01	1N914	J4	39-012-01	112APC 1/4" JACK
D201	21A914-01	1N914	J5	39-012-01	112APC 1/4" JACK
D202	21A914-01	1N914	J6	39-012-01	112APC 1/4" JACK
D203	21A914-01	1N914	J7	39-012-01	112APC 1/4" JACK
D204	21A914-01	1N914			
D301	21A914-01	1N914			
D302	21A914-01	1N914			
D303	21A914-01	1N914			
D304	21A914-01	1N914			
D401	21A914-01	1N914			
D402	21A914-01	1N914			
D403	21A914-01	1N914			
D404	21A914-01	1N914			
D501	21A914-01	1N914			
D502	21A914-01	1N914			
D503	21A914-01	1N914			
D504	21A914-01	1N914			
IC1	37-458-01	RC4558			
IC2	37-458-01	RC4558			
IC4	37-458-01	RC4558			
IC5	37-458-01	RC4558			
IC201	37-458-01	RC4558			
IC202	37-458-01	RC4558			
IC401	37-458-01	RC4558			
IC402	37-458-01	RC4558			
JW1-33	76-000-05	JUMPER WIRE			
J1	39-312-01	RE-AN X702-03 FEM XLR			
J2	39-114-02	114BPC 1/4" JACK			
J3	17-310-05	MPSS156-5-D HEADER			
J4	39-012-01	112APC 1/4" JACK			
J5	39-012-01	112APC 1/4" JACK			
J6	39-012-01	112APC 1/4" JACK			
J7	39-012-01	112APC 1/4" JACK			
P1	70-503-81	50KL			
P2	70-503-81	50KL			
P3	70-503-81	50KL			
P4	70-503-81	50KL			
P5	70-503-81	50KL			
P6	70-503-81	50KL			
P7	70-503-81	50KL			
P8	70-503-81	50KL			
P9	70-503-81	50KL			
P10	70-503-81	50KL			
P101	70-503-81	50KL			
P102	70-503-81	50KL			
P103	70-503-81	50KL			
P104	70-503-81	50KL			
P201	70-503-81	50KL			
P202	70-503-81	50KL			