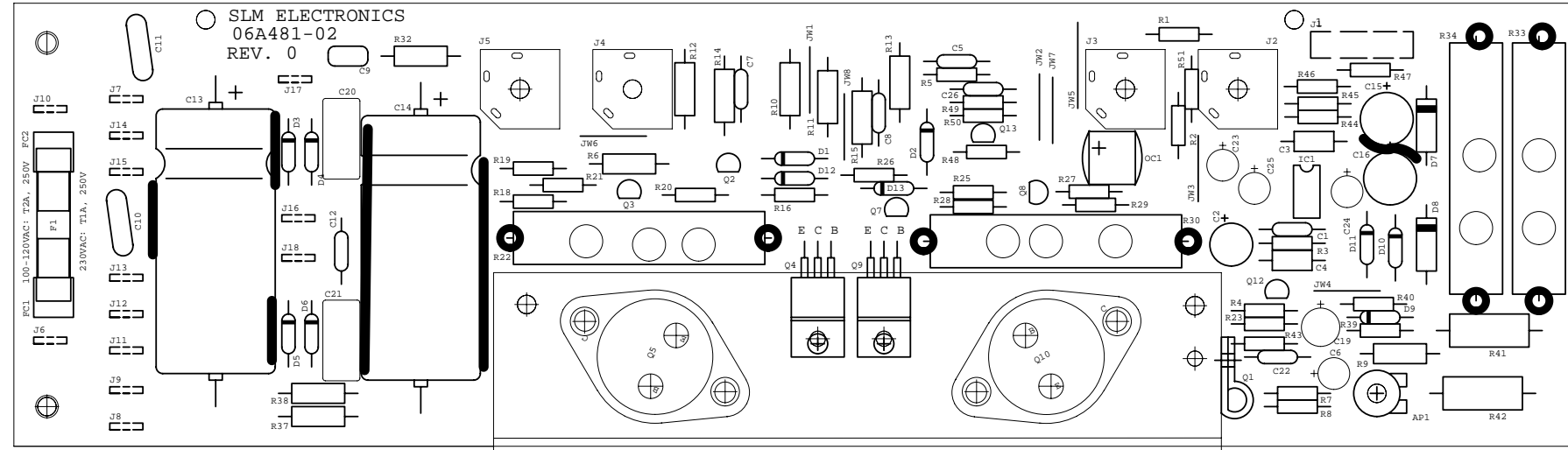


GOOP PARTS AS SHOWN (10W RES LEADS) PER STANDARD GOOPING PROCEDURE



REF DES	PART #	DESCRIPTION	REF DES	PART #	DESCRIPTION	REF DES	PART #	DESCRIPTION	REF DES	PART #	DESCRIPTION
AP1	71-501-02	500	D1	21A370-01	1N3070	Q1	96-342-01	2N3402	R19	76-183-01	18K
C1	10A101-21	100pf 200V	D2	21A370-01	1N3070	Q2	96R006-01	MPSA06	R20	76-220-01	22
C2	12R227-12	220uF 16V	D3	21A192-01	1N5392	Q3	96R056-01	MPSA56	R21	76-821-01	820
C3	10A104-01	0.1	D4	21A192-01	1N5392	Q4	96-032-03	TIP-32C	R22	78-330-10	.33 10W
C4	10A104-01	0.1	D5	21A192-01	1N5392	Q5	96-102-01	MJ15002	R23	76-104-01	100K
C5	10A221-11	220pF 100V	D6	21A192-01	1N5392	Q7	96R056-01	MPSA56	R25	76-101-01	100
C6	12R105-50	1uF 50V	D7	21-553-01	1N5353	Q8	96R006-01	MPSA06	R26	76-183-01	18K
C7	10A102-11	.001 100V	D8	21-553-01	1N5353	Q9	96-031-03	TIP31C	R27	76-221-01	220
C8	10A102-11	.001 100V	D9	21A914-01	1N914	Q10	96-355-01	2N3055	R28	76-220-01	22
C9	10R473-03	.047uF 100V	D10	21A145-01	1N4745	Q12	96R112-01	J112	R29	76-821-01	820
C10	10-332-01	.0033uF UL	D11	21A145-01	1N4745	Q13	96R006-01	MPSA06	R30	78-330-10	.33 10W
C11	10-332-01	.0033uF UL	D12	21A914-01	1N914	R1	76-681-01	680	R32	77-100-01	10 1/2W
C12	10A103-11	.01 100V	D13	21A914-01	1N914	R2	76-103-01	10K	R33	78-121-10	120 10W
C13	12-478-51	4700UF 35V	F1	23-312-01	2A SLOW BLO	R3	76-683-01	68K	R34	78-121-10	120 10W
C14	12-478-51	4700UF 35V	FC1	23-926-02	CLIP	R4	76-331-01	330	R37	77-822-01	8.2K 1/2W
C15	12R107-32	100uF 35V	FC2	23-926-02	CLIP	R5	76-682-01	6.8K	R38	77-822-01	8.2K 1/2W
C16	12R107-32	100uF 35V	IC1	37-072-01	TLO72	R6	77-103-01	10K 1/2W	R39	76-224-01	220K
C19	12R226-32	22uF 50V	J1	17-310-05	5 PIN .156	R7	76-332-01	3.3K	R40	76-472-01	4.7K
C20	10F224-03	.22uF 100V	J2	39-012-01	112APC JACK	R8	76-471-01	470	R41	78-471-01	470 1W
C21	10F224-03	.22uF 100V	J3	39-012-01	112APC JACK	R9	77-103-01	10K 1/2W	R42	78-471-01	470 1W
C22	10A101-21	100pF 200V	J4	39-012-01	112APC JACK	R10	77-221-01	220 1/2W	R43	76-333-01	33K
C23	12R106-35	10uF 35V	J5	39-012-01	112APC JACK	R11	77-221-01	220 1/2W	R44	76-272-02	2.74K 1%
C24	12R225-50	2.2uF 50V	J6	17-836-01	.25"TAB	R12	77-221-01	220 1/2W	R45	76-272-02	2.74K 1%
C25	12R225-50	2.2uF 50V	J7	39-012-01	112APC JACK	R13	77-221-01	220 1/2W	R46	76-272-02	2.74K 1%
C26	10A561-11	560pF 100V	J8	39-012-01	112APC JACK	R14	77-472-01	4.7K 1/2W	R47	76-272-02	2.74K 1%
			J9	39-012-01	112APC JACK	R15	77-472-01	4.7K 1/2W	R48	76-223-01	22K
			J10	39-012-01	112APC JACK	R16	76-101-01	100	R49	76-752-01	7.5K
			J11	39-012-01	112APC JACK	R18	76-221-01	220	R50	76-182-01	1.8K
			J12	39-012-01	112APC JACK	OC1	66-100-01	VTL5C7 OPTO	R51	76-100-01	10
			J13	39-012-01	112APC JACK				JW1-JW8	76-000-05	JUMPER WIRE

QTY	PART #	DESCRIPTION, WHERE USED
3	30-408-52	#4 SCREW, BIAS & DRIVERS
3	30-442-52	#4 NUT, BIAS & DRIVERS
4	30-638-53	#6 SCREW, HEATSINK MTG, STANDOFF
4	30-639-52	#6 SCREW, MTG OUTPUT TRANSISITORS
6	30-700-01	#6 NUT, MTG OUTPUT TRANS, HEATSINK
2	35-003-02	OUTPUT TRANS INSULATORS
2	35-043-01	NYLON BUSHING TO-220
2	35-579-01	TO-220 INSULATORS
2	85-133-01	15/16" STANDOFF
1	33-281-01	PA-4 HEATSINK BRKT
1	06a481-02	PA4a PC BOARD

SIGNATURES:		DATE:	11880 BORMAN DR. ST. LOUIS, MISSOURI 63146	
DRAWN:	REM	10/8/98	PROJECT NAME:	
CHK'D:	BARRY	10/9/98	PA4a	
APP'D:	DJR	10/9/98	DRAWING NAME:	
ORIGINAL ISSUED:	10/9/98	POWER_AMP_ASSEMBLY\GOOPED_PARTS		
PLOT DATE:	12-11-98	DRAWING NO.	07P481-02	REV. 0_
PLOT TIME:	00:00	SCALE:	NONE	SHEET: 1_OF_1
FILE NAME:	48102B0_			