
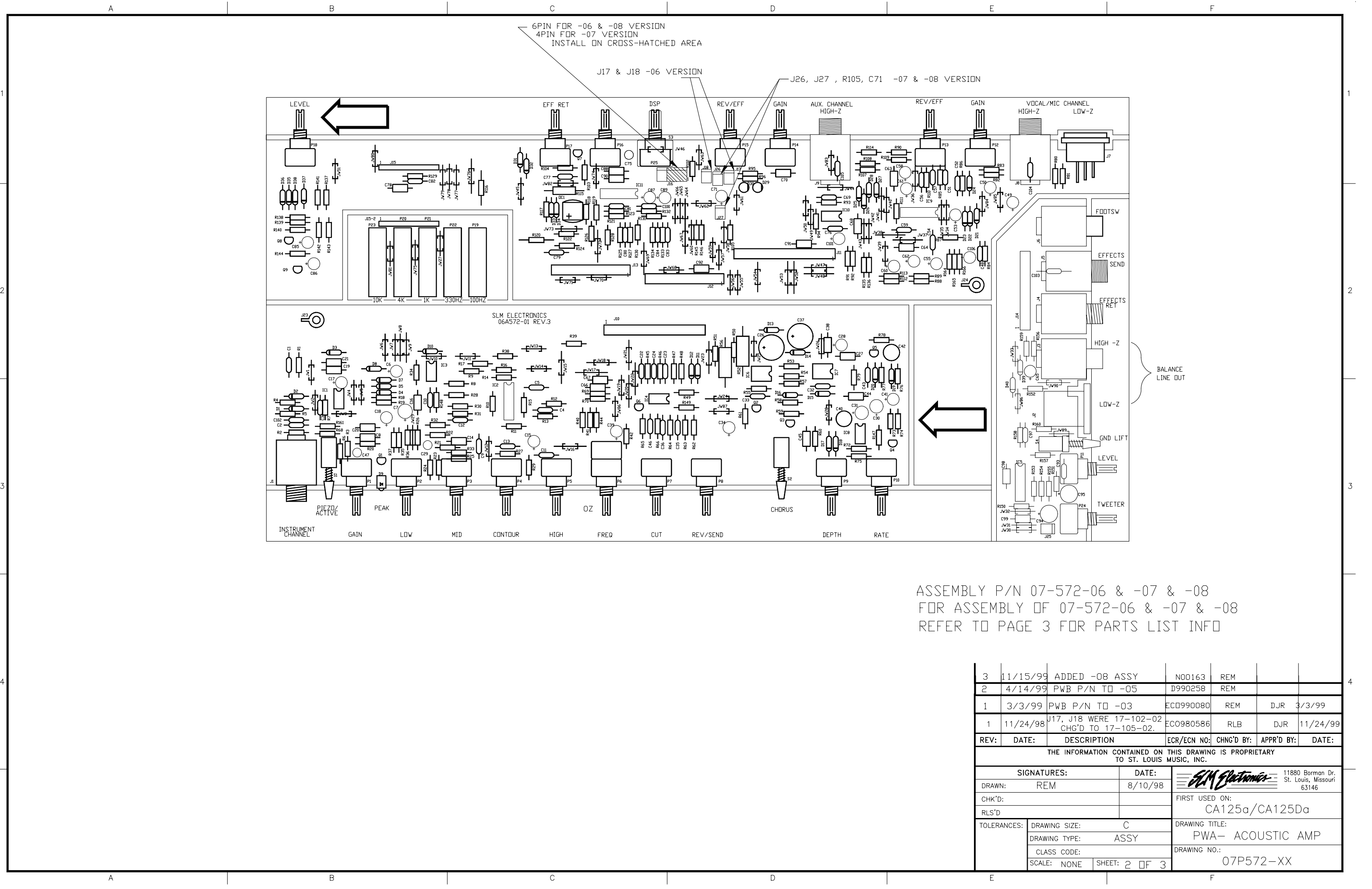



ASSEMBLY PART # 07-572-05  
 FOR ASSEMBLY OF 07-572-05  
 REFER TO PAGE 2 FOR PARTS LIST INFO

3	11/15/99	ADDED -08 ASSY	N00163	REM		
2	4/14/99	PWB P/N TO -05	D990258	REM		
1	3/3/99	PWB P/N TO -03	EC0990080	REM	DJR	3/3/99
1	11/24/98	J17, J18 WERE 17-102-02 CHG'D TO 17-105-02.	EC0980586	RLB	DJR	11/24/99
REV:	DATE:	DESCRIPTION	ECR/ECN NO:	CHNG'D BY:	APPR'D BY:	DATE:
THE INFORMATION CONTAINED ON THIS DRAWING IS PROPRIETARY TO ST. LOUIS MUSIC, INC.						
SIGNATURES:		DATE:				
DRAWN: REM		8/10/98		 11880 Borman Dr. St. Louis, Missouri 63146		
CHK'D:				FIRST USED ON:		
RLS'D:				CA125a/CA125a		
TOLERANCES:		DRAWING SIZE: C		DRAWING TITLE:		
		DRAWING TYPE: ASSY		PWA- ACOUSTIC AMP		
		CLASS CODE:		DRAWING NO.:		
		SCALE: NONE		07P572-XX		
		SHEET: 1 OF 3				



ASSEMBLY P/N 07-572-06 & -07 & -08  
 FOR ASSEMBLY OF 07-572-06 & -07 & -08  
 REFER TO PAGE 3 FOR PARTS LIST INFO

3	11/15/99	ADDED -08 ASSY	N00163	REM		
2	4/14/99	PWB P/N TO -05	D990258	REM		
1	3/3/99	PWB P/N TO -03	ECD990080	REM	DJR	3/3/99
1	11/24/98	J17, J18 WERE 17-102-02 CHG'D TO 17-105-02.	ECO980586	RLB	DJR	11/24/99
REV:	DATE:	DESCRIPTION	ECR/ECN NO:	CHNG'D BY:	APPR'D BY:	DATE:
THE INFORMATION CONTAINED ON THIS DRAWING IS PROPRIETARY TO ST. LOUIS MUSIC, INC.						
SIGNATURES:		DATE:				
DRAWN:	REM	8/10/98		 11880 Borman Dr. St. Louis, Missouri 63146		
CHK'D:				FIRST USED ON:		
RLS'D:				CA125a/CA125Da		
TOLERANCES:	DRAWING SIZE:	C		DRAWING TITLE:		
	DRAWING TYPE:	ASSY		PWA- ACOUSTIC AMP		
	CLASS CODE:			DRAWING NO.:		
	SCALE: NONE	SHEET: 2 OF 3		07P572-XX		

