

NOTE: INSTALL SOLDER MASK DISCS PRIOR TO WAVE SOLDER AS SHOWN OVER "BOTTOM SIDE" PADS OF COMPONENTS TO BE BOTTOM MOUNTED. (SD1-SD15)

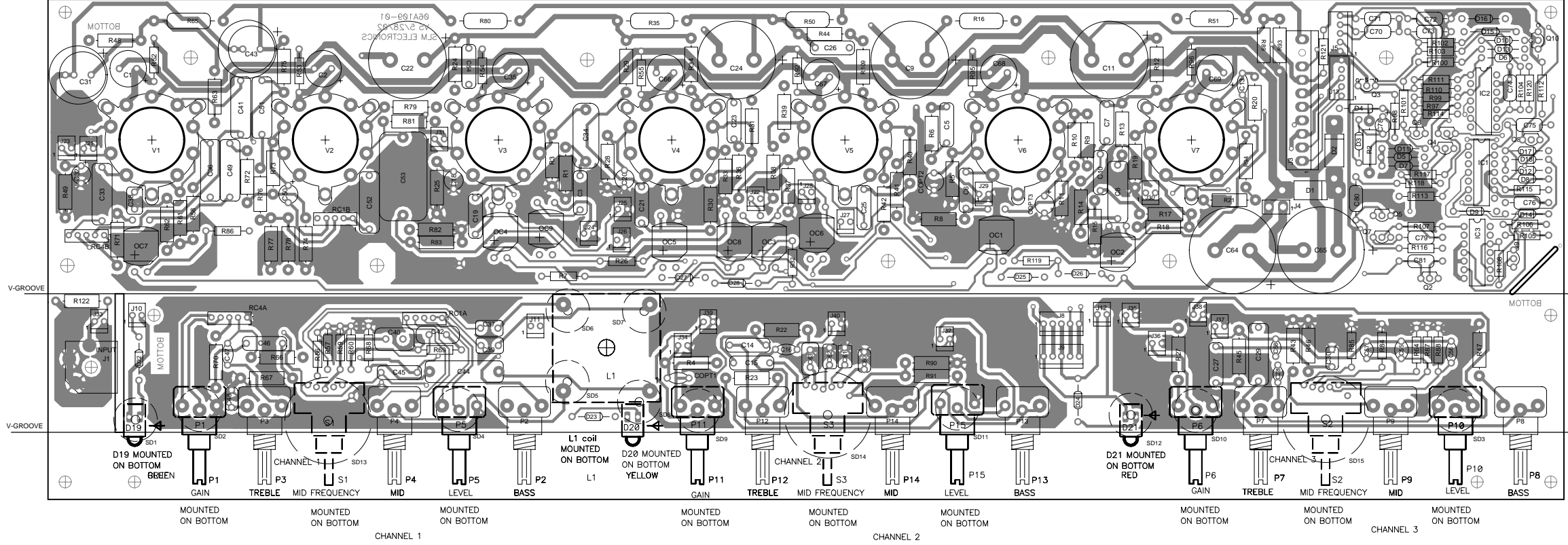
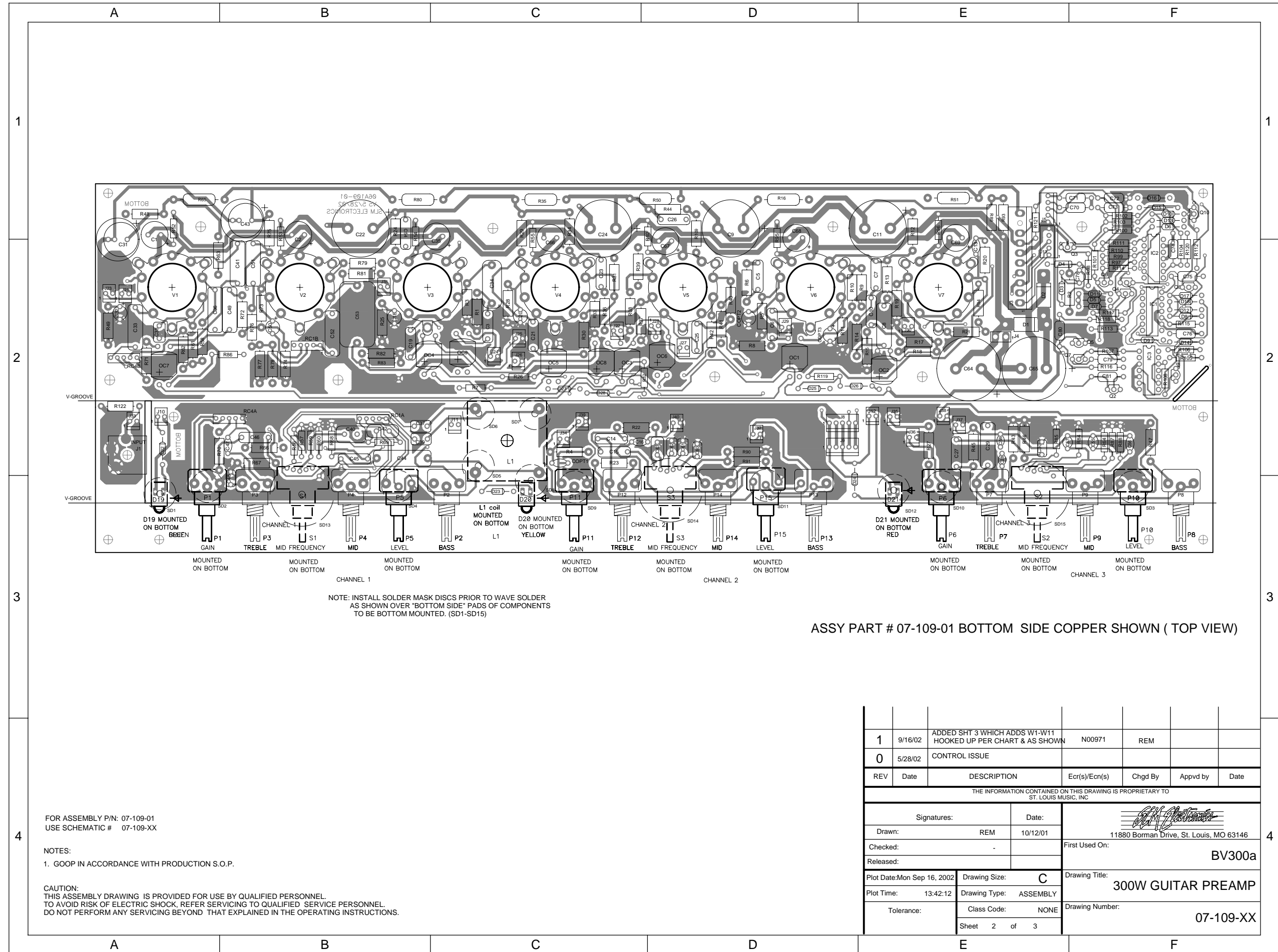
TOP SIDE COPPER (TOP VIEW)
ASSY PART # 07-109-01

FOR ASSEMBLY P/N: 07-109-01
USE SCHEMATIC # 07-109-XX

NOTES:
1. GOOP IN ACCORDANCE WITH PRODUCTION S.O.P.

CAUTION:
THIS ASSEMBLY DRAWING IS PROVIDED FOR USE BY QUALIFIED PERSONNEL.
TO AVOID RISK OF ELECTRIC SHOCK, REFER SERVICING TO QUALIFIED SERVICE PERSONNEL.
DO NOT PERFORM ANY SERVICING BEYOND THAT EXPLAINED IN THE OPERATING INSTRUCTIONS.

1	9/16/02	ADDED SHT 3 WHICH ADDS W1-W11 HOOKED UP PER CHART & AS SHOWN	N00971	REM		
0	5/28/02	CONTROL ISSUE				
REV	Date	DESCRIPTION	Ecr(s)/Ecn(s)	Chgd By	Appvd by	Date
THE INFORMATION CONTAINED ON THIS DRAWING IS PROPRIETARY TO ST. LOUIS MUSIC, INC						
Signatures:			Date:		 11880 Borman Drive, St. Louis, MO 63146	
Drawn: REM			10/12/01			
Checked:			Released:		First Used On: BV300a	
Plot Date: Mon Sep 16, 2002		Drawing Size: C		Drawing Title: 300W GUITAR PREAMP		
Plot Time: 13:39:39		Drawing Type: ASSEMBLY		Drawing Number: 07-109-XX		
Tolerance:		Class Code: NONE		Sheet 1 of 3		



NOTE: INSTALL SOLDER MASK DISCS PRIOR TO WAVE SOLDER AS SHOWN OVER "BOTTOM SIDE" PADS OF COMPONENTS TO BE BOTTOM MOUNTED. (SD1-SD15)

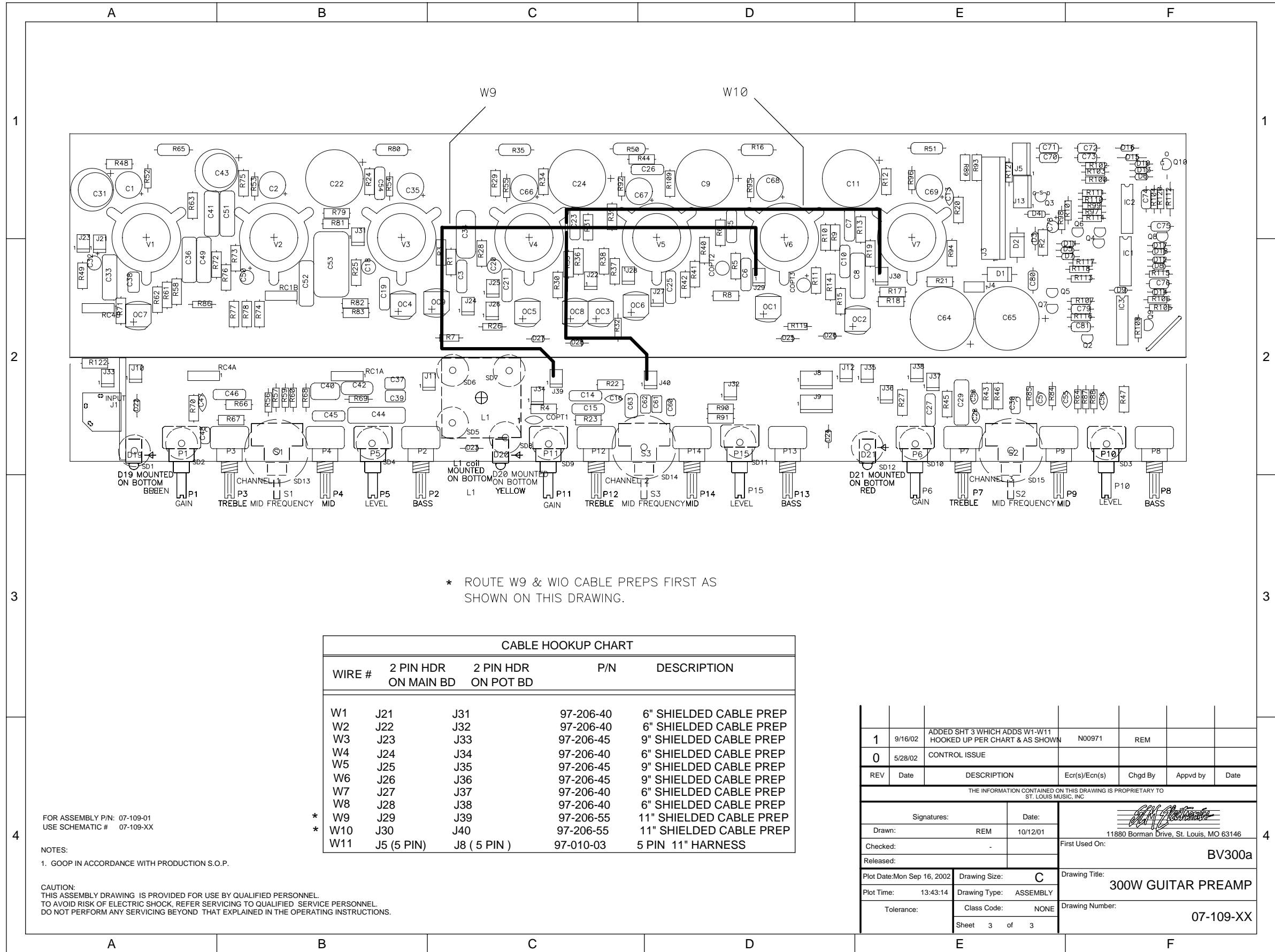
ASSY PART # 07-109-01 BOTTOM SIDE COPPER SHOWN (TOP VIEW)

FOR ASSEMBLY P/N: 07-109-01
USE SCHEMATIC # 07-109-XX

NOTES:
1. GOOP IN ACCORDANCE WITH PRODUCTION S.O.P.

CAUTION:
THIS ASSEMBLY DRAWING IS PROVIDED FOR USE BY QUALIFIED PERSONNEL.
TO AVOID RISK OF ELECTRIC SHOCK, REFER SERVICING TO QUALIFIED SERVICE PERSONNEL.
DO NOT PERFORM ANY SERVICING BEYOND THAT EXPLAINED IN THE OPERATING INSTRUCTIONS.

1	9/16/02	ADDED SHT 3 WHICH ADDS W1-W11 HOOKED UP PER CHART & AS SHOWN	N00971	REM		
0	5/28/02	CONTROL ISSUE				
REV	Date	DESCRIPTION	Ecr(s)/Ecn(s)	Chgd By	Appvd by	Date
THE INFORMATION CONTAINED ON THIS DRAWING IS PROPRIETARY TO ST. LOUIS MUSIC, INC.						
Signatures:		Date:		 11880 Borman Drive, St. Louis, MO 63146		
Drawn: REM		10/12/01				
Checked:		-		First Used On:		
Released:				BV300a		
Plot Date: Mon Sep 16, 2002		Drawing Size: C		Drawing Title:		
Plot Time: 13:42:12		Drawing Type: ASSEMBLY		300W GUITAR PREAMP		
Tolerance:		Class Code: NONE		Drawing Number:		
		Sheet 2 of 3		07-109-XX		



* ROUTE W9 & W10 CABLE PREPS FIRST AS SHOWN ON THIS DRAWING.

CABLE HOOKUP CHART				
WIRE #	2 PIN HDR ON MAIN BD	2 PIN HDR ON POT BD	P/N	DESCRIPTION
W1	J21	J31	97-206-40	6" SHIELDED CABLE PREP
W2	J22	J32	97-206-40	6" SHIELDED CABLE PREP
W3	J23	J33	97-206-45	9" SHIELDED CABLE PREP
W4	J24	J34	97-206-40	6" SHIELDED CABLE PREP
W5	J25	J35	97-206-45	9" SHIELDED CABLE PREP
W6	J26	J36	97-206-45	9" SHIELDED CABLE PREP
W7	J27	J37	97-206-40	6" SHIELDED CABLE PREP
W8	J28	J38	97-206-40	6" SHIELDED CABLE PREP
* W9	J29	J39	97-206-55	11" SHIELDED CABLE PREP
* W10	J30	J40	97-206-55	11" SHIELDED CABLE PREP
W11	J5 (5 PIN)	J8 (5 PIN)	97-010-03	5 PIN 11" HARNESS

FOR ASSEMBLY P/N: 07-109-01
USE SCHEMATIC # 07-109-XX

NOTES:
1. GOOP IN ACCORDANCE WITH PRODUCTION S.O.P.

CAUTION:
THIS ASSEMBLY DRAWING IS PROVIDED FOR USE BY QUALIFIED PERSONNEL.
TO AVOID RISK OF ELECTRIC SHOCK, REFER SERVICING TO QUALIFIED SERVICE PERSONNEL.
DO NOT PERFORM ANY SERVICING BEYOND THAT EXPLAINED IN THE OPERATING INSTRUCTIONS.

REV	Date	DESCRIPTION	Ecr(s)/Ecn(s)	Chgd By	Appvd by	Date
1	9/16/02	ADDED SHT 3 WHICH ADDS W1-W11 HOOKED UP PER CHART & AS SHOWN	N00971	REM		
0	5/28/02	CONTROL ISSUE				

THE INFORMATION CONTAINED ON THIS DRAWING IS PROPRIETARY TO ST. LOUIS MUSIC, INC.

Signatures:	Date:	 11880 Borman Drive, St. Louis, MO 63146
Drawn: REM	10/12/01	
Checked: -		First Used On:
Released:		BV300a
Plot Date: Mon Sep 16, 2002	Drawing Size: C	Drawing Title:
Plot Time: 13:43:14	Drawing Type: ASSEMBLY	300W GUITAR PREAMP
Tolerance:	Class Code: NONE	Drawing Number:
	Sheet 3 of 3	07-109-XX