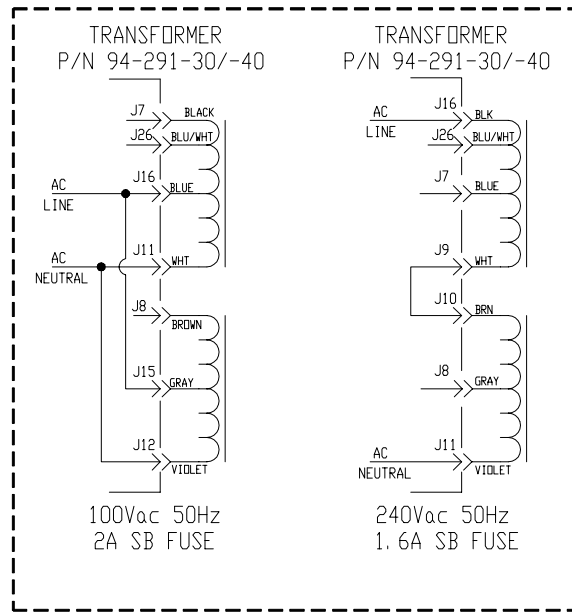


BIAS: WITH NO SIGNAL AND NO LOAD ADJUST AP1 FOR 5mV ACROSS R53.

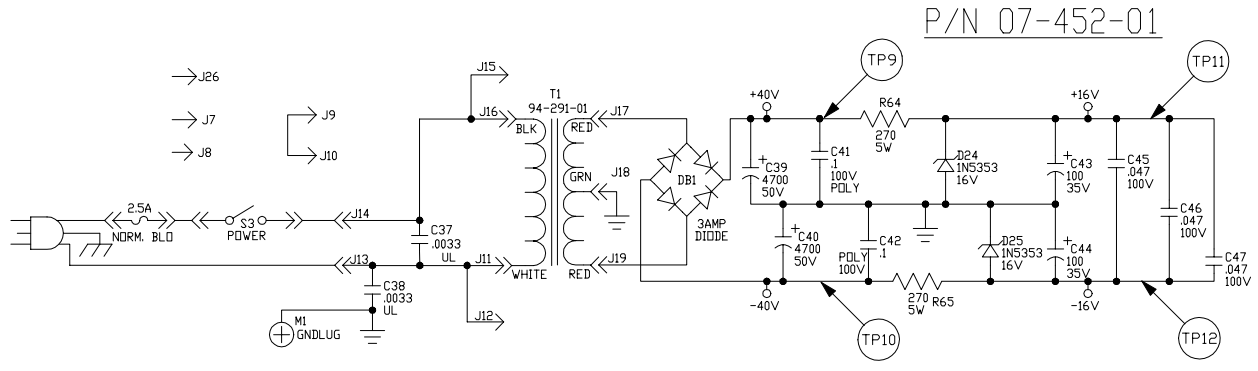
INPUT PAD @ '0dB'
GAIN LEVEL & BAL LEVEL @ '10'
CONTOUR @ 'OFF'
BAL. LINE. OUT 'POST'
4 OHM LOAD
1 KHZ 14mV INPUT SIGNAL

T.P.	AC VOLTAGE RMS	DC VOLTAGE
1	275mV	—
2	320mV	—
3	310mV	—
4	300mV	—
5	50mV	—
6	450mV	—
7	115V	—
8	15V	—
9	0.5V ripple	+32V
10	0.5V ripple	-32V
11	—	+16V
12	—	-16V

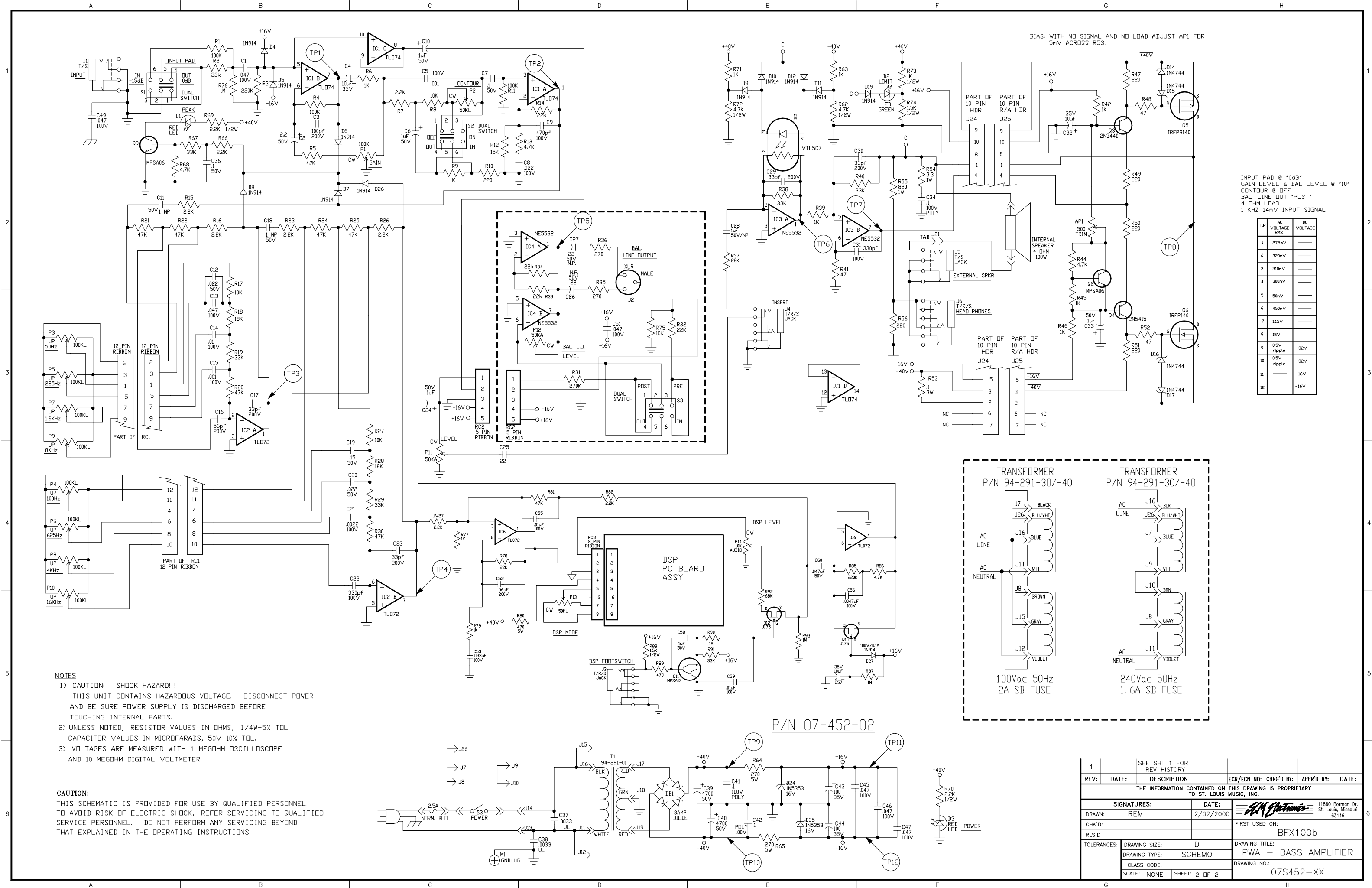


NOTES
1) CAUTION: SHOCK HAZARD!! THIS UNIT CONTAINS HAZARDOUS VOLTAGE. DISCONNECT POWER AND BE SURE POWER SUPPLY IS DISCHARGED BEFORE TOUCHING INTERNAL PARTS.
2) UNLESS NOTED, RESISTOR VALUES IN OHMS, 1/4W-5% TOL. CAPACITOR VALUES IN MICROFARADS, 50V-10% TOL.
3) VOLTAGES ARE MEASURED WITH 1 MEGOHM OSCILLOSCOPE AND 10 MEGOHM DIGITAL VOLTMETER.

CAUTION:
THIS SCHEMATIC IS PROVIDED FOR USE BY QUALIFIED PERSONNEL. TO AVOID RISK OF ELECTRIC SHOCK, REFER SERVICING TO QUALIFIED SERVICE PERSONNEL. DO NOT PERFORM ANY SERVICING BEYOND THAT EXPLAINED IN THE OPERATING INSTRUCTIONS.



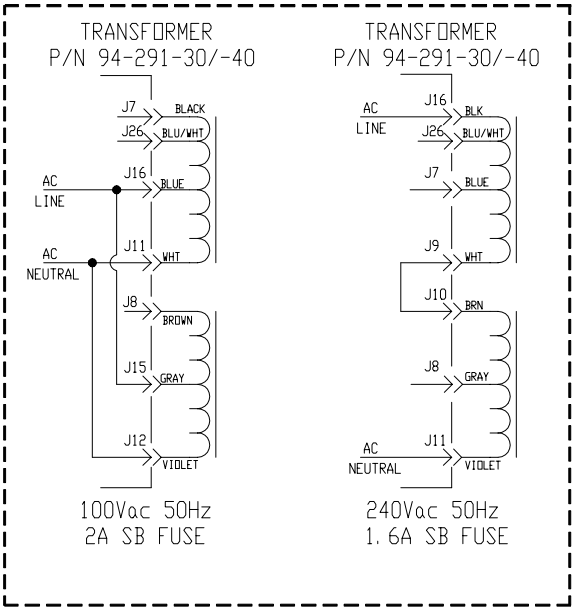
1	1-26-01	ADDED SHEET 2 FOR DASH -02	N00483	RLB	
0	6-9-00	CONTROL ISSUE			
B	3/10/2000	INITIAL ISSUE		REM	
REV:	DATE:	DESCRIPTION	ECR/EON NO:	CHNG'D BY:	APPR'D BY:
THE INFORMATION CONTAINED ON THIS DRAWING IS PROPRIETARY TO ST. LOUIS MUSIC, INC.					
SIGNATURES:		DATE:	11880 Borman Dr. St. Louis, Missouri 63146		
DRAWN: REM		2/02/2000	FIRST USED ON: BFX100b		
CHK'D:			DRAWING TITLE: PWA - BASS AMPLIFIER		
RLS'D:			DRAWING NO.: 07S452-XX		
TOLERANCES:		DRAWING SIZE: D	SCALE: NONE SHEET: 1 OF 2		
		DRAWING TYPE: SCHEMO			



BIAS: WITH NO SIGNAL AND NO LOAD ADJUST AP1 FOR 5mV ACROSS R53.

INPUT PAD @ '0dB'
 GAIN LEVEL & BAL LEVEL @ '10'
 CONTOUR @ 'OFF'
 BAL. LINE OUT 'POST'
 4 OHM LOAD
 1 KHZ 14mV INPUT SIGNAL

TP	AC VOLTAGE RMS	DC VOLTAGE
1	275mV	---
2	320mV	---
3	310mV	---
4	300mV	---
5	50mV	---
6	450mV	---
7	115V	---
8	15V	---
9	0.5V ripple	+32V
10	0.5V ripple	-32V
11	---	+16V
12	---	-16V



NOTES

- CAUTION: SHOCK HAZARD!! THIS UNIT CONTAINS HAZARDOUS VOLTAGE. DISCONNECT POWER AND BE SURE POWER SUPPLY IS DISCHARGED BEFORE TOUCHING INTERNAL PARTS.
- UNLESS NOTED, RESISTOR VALUES IN OHMS, 1/4W-5% TOL. CAPACITOR VALUES IN MICROFARADS, 50V-10% TOL.
- VOLTAGES ARE MEASURED WITH 1 MEGOHM OSCILLOSCOPE AND 10 MEGOHM DIGITAL VOLTMETER.

CAUTION:
 THIS SCHEMATIC IS PROVIDED FOR USE BY QUALIFIED PERSONNEL. TO AVOID RISK OF ELECTRIC SHOCK, REFER SERVICING TO QUALIFIED SERVICE PERSONNEL. DO NOT PERFORM ANY SERVICING BEYOND THAT EXPLAINED IN THE OPERATING INSTRUCTIONS.

1	SEE SHT 1 FOR REV HISTORY				
REV:	DATE:	DESCRIPTION	ECR/ECN NO:	CHNG'D BY:	APPR'D BY:
THE INFORMATION CONTAINED ON THIS DRAWING IS PROPRIETARY TO ST. LOUIS MUSIC, INC.					
SIGNATURES:		DATE:			
DRAWN: REM		2/02/2000			
CHK'D:		FIRST USED ON:		BFX100b	
RLS'D:		DRAWING TITLE:		PWA - BASS AMPLIFIER	
TOLERANCES:		DRAWING SIZE:		D	
		DRAWING TYPE:		SCHEMO	
		CLASS CODE:			
		SCALE:		NONE	
		SHEET:		2 OF 2	
		DRAWING NO.:		07S452-XX	