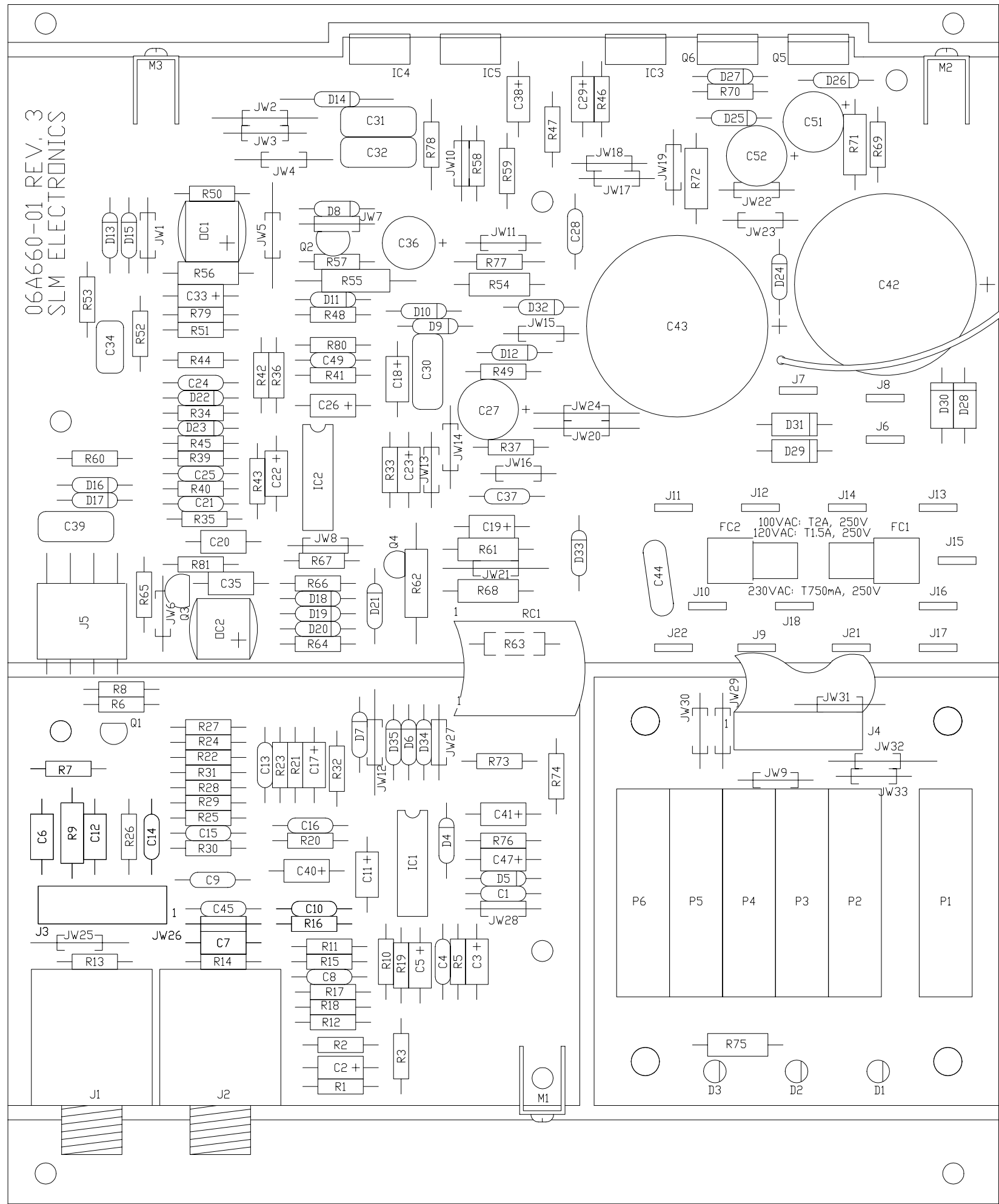


06A660-01 REV. 3  
SLM ELECTRONICS




**NOTES**

- 1) CAUTION: SHOCK HAZARD!!  
THIS UNIT CONTAINS HAZARDOUS VOLTAGE. DISCONNECT POWER AND BE SURE POWER SUPPLY IS DISCHARGED BEFORE TOUCHING INTERNAL PARTS.

REV	DATE	BY	CHK'D	DESCRIPTION
6				
5	10/01/97	MAG		CHG'D 12-107-32,12-476-32,96-013-01 TO 12R107-32,12R476-35,96R013-01 PER E970570.
4	07/11/97	SWR		CHANGED FC1 & FC2. PER ECO #970104.
3	08/30/96	LMA		CHG 70-104-25 TO 70-104-21 E960254
2	05/24/94	LMA		76-000-01 TO -05 PER E150
1	01/11/94	REM		ART TO REV. 4 ADDED JUMPERS

SIGNATURES:		DATE:	11880 BORMAN DR. ST. LOUIS, MISSOURI 63146	
DRAWN:	MGA	09/02/93	 PROJECT NAME: <b>APM-75 MONITOR</b> DRAWING NAME: <b>PICTORIAL DRAWING</b>	
CHK'D:	DKS	09/02/93		
APP'D:	DKS	09/02/93		
ORIGINAL ISSUED:		09/03/93		
PLOT DATE:		10/07/97	DRAWING NO. 07P660-01 REV. 5_ SCALE: 1:1 SHEET: 1 OF 2	
PLOT TIME:		12:28:24		
FILE NAME:		66001P5_		

DESIGNATOR	PART #	DESCRIPTION	
C1	10A221-11	220pf	100V
C2	12A106-11	10uF	16V
C3	12A106-11	10uF	16V
C4	10A221-11	220pf	100V
C5	12A106-11	10uF	16V
C6	10A104-01	.1	50V
C7	10A473-11	.047	100V
C8	10A152-11	.0015	100V
C9	10A331-11	330pf	100V
C10	10A100-21	10pf	200V
C11	12A106-11	10uF	16V
C12	10A473-11	.047	100V
C13	10A103-11	.01	100V
C14	10A152-11	.0015	100V
C15	10A331-11	330pf	100V
C16	10A100-21	10pf	200V
C17	12A105-51	1uF	50V
C18	12A106-11	10uF	16V
C19	12A105-51	1uF	50V
C20	10A473-11	.047	100V
C21	10A472-11	.0047	100V
C22	12A105-51	1uF	50V
C23	12A105-51	1uF	50V
C24	10A152-11	.0015	100V
C25	10A152-11	.0015	100V
C26	12A105-51	1uF	50V
C27	12R107-32	100	35V
C28	10A221-11	220pf	100V
C29	12A106-11	10uF	16V
C30	10-224-03	.22	100V
C31	10-224-03	.22	100V
C32	10-224-03	.22	100V
C33	12A106-11	10uF	16V
C34	10-104-03	.1	100V
C35	10A104-01	.1	50V
C36	12R476-35	47	35V
C37	10A560-21	56pf	200V
C38	12A105-51	1uF	50V
C39	10-224-03	.22	100V
C40	12A106-11	10uF	16V
C41	12A106-11	10uF	16V
C42	12-478-53	4700	50V
C43	12-478-53	4700	50V
C44	10-332-01	.0033	UL
C45	10A103-11	.01	100V
C47	12A106-11	10uF	16V
C49	10A102-11	.001	100V
C51	12R107-32	100	35V
C52	12R107-32	100	35V

D1	21-511-03	RED	LED
D2	21-511-01	GREEN	LED
D3	21-511-02	YELLOW	LED
D4	21A914-01	1N914	
D5	21A914-01	1N914	
D6	21A914-01	1N914	
D7	21A914-01	1N914	

D8	21A914-01	1N914	
D9	21A914-01	1N914	
D10	21A914-01	1N914	
D11	21A914-01	1N914	
D12	21A402-01	1N4002	
D13	21A402-01	1N4002	
D14	21A402-01	1N4002	
D15	21A402-01	1N4002	
D16	21A914-01	1N914	
D17	21A914-01	1N914	
D18	21A914-01	1N914	
D19	21A914-01	1N914	
D20	21A914-01	1N914	
D21	21A914-01	1N914	
D22	21A914-01	1N914	
D23	21A146-01	1N746	
D24	21A145-01	1N4745	16V
D25	21A145-01	1N4745	16V
D26	21A447-01	1N4747	20V/1W
D27	21A447-01	1N4747	20V/1W
D28	21A593-01	1N5393	
D29	21A593-01	1N5393	
D30	21A593-01	1N5393	
D31	21A593-01	1N5393	
D32	21A402-01	1N4002	
D33	21A402-01	1N4002	
D34	21A914-01	1N914	
D35	21A914-01	1N914	

F1 SEE CHART BELOW

FC1	23-926-02	CLIP
FC2	23-926-02	CLIP

IC1	37-074-01	TL074
IC2	37-074-01	TL074
IC3	37-250-02	TDA2050
IC4	37-250-02	TDA2050
IC5	37-250-02	TDA2050

J1	39-116-01	1/4" T/S JACK
J2	39-116-01	1/4" T/S JACK
J3	17-101-16	100 DR_HEADER
J4	99-135-11	100 CABLE
J5	17-313-04	156 LOCK-HDR
J6	17-836-01	.250 TAB
J7	17-836-01	.250 TAB
J8	17-836-01	.250 TAB
J9	17-836-01	.250 TAB
J10	17-836-01	.250 TAB
J11	17-836-01	.250 TAB
J12	17-836-01	.250 TAB
J13	17-836-01	.250 TAB
J14	17-836-01	.250 TAB
J15	17-894-01	.187 TAB
J16	17-894-01	.187 TAB
J17	17-836-01	.250 TAB
J18	17-836-01	.250 TAB
J19		NOT USED
J20		NOT USED

J21	17-836-01	.250	TAB
J22	17-836-01	.250	TAB
JW1-JW33	76-000-05		JUMPER
M1	51-149-01		GNDLUG
M2	51-149-01		GNDLUG
M3	51-149-01		GNDLUG
OC1	66-100-01	VTL5C7	OPTO
OC2	66-100-01	VTL5C7	OPTO
P1	70-104-21	100KL	POT
P2	70-104-21	100KL	POT
P3	70-104-21	100KL	POT
P4	70-104-21	100KL	POT
P5	70-104-21	100KL	POT
P6	70-104-21	100KL	POT
Q1	96R013-01	MPSA13	TRANSISTER
Q2	96-539-01	2N5639	TRANSISTER
Q3	96-539-01	2N5639	TRANSISTER
Q4	96R013-01	MPSA13	TRANSISTER
Q5	96-120-01	TIP-120	TRANSISTER
Q6	96-125-01	TIP-125	TRANSISTER
R1	76-103-02	10K / 1%	
R2	76-103-02	10K / 1%	
R3	76-103-02	10K / 1%	
R5	76-103-02	10K / 1%	
R6	76-222-01	2.2K	
R7	76-105-01	1M	
R8	76-184-01	180K	
R9	77-152-01	1.5K 1/2W	
R10	76-222-01	2.2K	
R11	76-473-01	47K	
R12	76-473-01	47K	
R13	76-103-01	10K	
R14	76-223-01	22K	
R15	76-333-01	33K	
R16	76-473-01	47K	
R17	76-473-01	47K	
R18	76-473-01	47K	
R19	76-222-01	2.2K	
R20	76-222-01	2.2K	
R21	76-473-01	47K	
R22	76-473-01	47K	
R23	76-473-01	47K	
R24	76-473-01	47K	
R25	76-473-01	47K	
R26	76-473-01	47K	
R27	76-103-01	10K	
R28	76-223-01	22K	
R29	76-333-01	33K	
R30	76-473-01	47K	
R31	76-222-01	2.2K	
R32	76-473-01	47K	
R33	76-102-01	1K	
R34	76-103-01	10K	
R35	76-103-01	10K	

R36	76-223-01	22k	
R37	76-103-01	10K	
R39	76-473-01	47K	
R40	76-104-01	100K	
R41	76-223-01	22k	
R42	76-104-01	100K	
R43	76-104-01	100K	
R44	76-224-01	220K	
R45	76-333-01	33K	
R46	76-223-01	22K	
R47	76-681-01	680	
R48	76-223-01	22K	
R49	76-047-01	4.7	
R50	76-223-01	22k	
R51	76-223-01	22K	
R52	76-681-01	680	
R53	76-047-01	4.7	
R54	77-331-01	330	1/2W
R55	78-821-01	820	1W
R56	77-331-01	330	1/2W
R57	76-330-01	33	
R58	76-223-01	22K	
R59	76-681-01	680	
R60	76-047-01	4.7	
R61	77-471-01	470	1/2W
R62	78-821-01	820	1W
R63	77-471-01	470	1/2W
R64	76-330-01	33	
R65	76-222-01	2.2K	
R66	76-105-01	1M	
R67	76-124-01	120K	
R68	77-152-01	1.5K	1/2W
R69	76-103-01	10K	
R70	76-103-01	10K	
R71	77-221-01	220	1/2W
R72	77-221-01	220	1/2W
R73	76-101-01	100	
R74	76-101-01	100	
R75	77-152-01	1.5K	1/2W
R76	76-224-01	220K	
R77	76-223-01	22K	
R78	76-223-01	22K	
R79	76-473-01	47K	
R80	76-223-01	22k	
R81	76-224-01	220K	
W1	97-153-77		WIRE W/RING
RC1	99-124-01		8_PIN RIBBON

30-638-53 (2) PCS 6-32 X 3/8" SCREW  
85-132-01 (2) PCS 1" HEX STANDOFF  
06A660-01 (1) PCS PC BOARD REV. 3

SEE SHT 1 FOR REV HISTORY

F1 { 23-312-01 FUSE 100VAC: T2A, 250V  
23-308-05 FUSE 120VAC: T1.5A, 250V  
23-318-05 FUSE 230VAC: T750mA, 250V

SIGNATURES:		DATE:	11880 BORMAN DR. ST. LOUIS, MISSOURI 63146	
DRAWN:	MGA	09/02/93	PROJECT NAME: APM-75 MONITOR	
CHK'D:	DKS	09/02/93	DRAWING NAME: PICTORIAL DRAWING	
APP'D:	DKS	09/02/93	DRAWING NO. 07P660-01 REV. 5_	
ORIGINAL ISSUED:	09/02/93	SCALE: 1:1 SHEET: 2 OF 2		
PLOT DATE:	10/07/97			
PLOT TIME:	12:28:24			
FILE NAME:	66001P5_			