

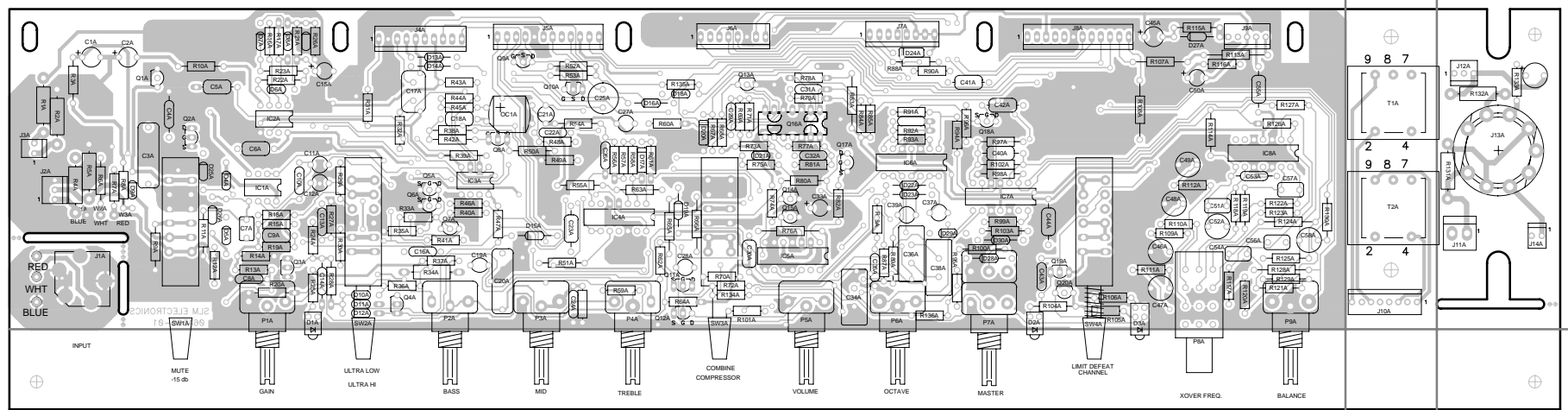
TOP SOLDER VIEW

FOR ASSEMBLY P/N: 07-565-01
 USE SCHEMATIC # 565XXSCH_PDF

- NOTES:
 1. GOOP IN ACCORDANCE WITH PRODUCTION S.O.P.

CAUTION:
 THIS ASSEMBLY DRAWING IS PROVIDED FOR USE BY QUALIFIED PERSONNEL.
 TO AVOID RISK OF ELECTRIC SHOCK, REFER SERVICING TO QUALIFIED SERVICE PERSONNEL.
 DO NOT PERFORM ANY SERVICING BEYOND THAT EXPLAINED IN THE OPERATING INSTRUCTIONS.

0	8/30/01	CONTROL ISSUE				
REV	Date	DESCRIPTION	Ecr(s)/Ecn(s)	Chgd By	Appvd by	Date
THE INFORMATION CONTAINED ON THIS DRAWING IS PROPRIETARY TO ST. LOUIS MUSIC, INC.						
Signatures:		Date:		 11880 Borman Drive, St. Louis, MO 63146		
Drawn: WFB		5/23/01				
Checked:				First Used On: SVT5PROa		
Released:				Drawing Title: BASS PREAMP A		
Plot Date: Thu Aug 30, 2001		Drawing Size: C		Drawing Number: 07-565-XX		
Plot Time: 09:09:12		Drawing Type: ASSEMBLY				
Tolerance:		Class Code: NONE				
		Sheet 1 of 2				




BOTTOM SOLDER VIEW

FOR ASSEMBLY P/N: 07-565-01
USE SCHEMATIC # 565XXSCH_PDF

NOTES:
1. GOOP IN ACCORDANCE WITH PRODUCTION S.O.P.

CAUTION:
THIS ASSEMBLY DRAWING IS PROVIDED FOR USE BY QUALIFIED PERSONNEL.
TO AVOID RISK OF ELECTRIC SHOCK, REFER SERVICING TO QUALIFIED SERVICE PERSONNEL.
DO NOT PERFORM ANY SERVICING BEYOND THAT EXPLAINED IN THE OPERATING INSTRUCTIONS.

0	8/30/01	CONTROL ISSUE				
REV	Date	DESCRIPTION	Ecr(s)/Ecn(s)	Chgd By	Appvd by	Date
THE INFORMATION CONTAINED ON THIS DRAWING IS PROPRIETARY TO ST. LOUIS MUSIC, INC.						
Signatures:		Date:		 11880 Borman Drive, St. Louis, MO 63146		
Drawn: WFB		5/23/01				
Checked:				First Used On: SVT5PROa		
Released:				Drawing Title: BASS PREAMP A		
Plot Date: Thu Aug 30, 2001		Drawing Size: C		Drawing Number: 07-565-XX		
Plot Time: 09:09:48		Drawing Type: ASSEMBLY				
Tolerance:		Class Code: NONE				
		Sheet 2 of 2				