


NOTE: SHOWN, BUT DO NOT INSTALL;
C76, D7, D23, D24

P/N 07-534-02THIS DWG SUPERCEDES 07P534-01.
SHEETS 2 & 3 OF 3 IS ACAD DWG FILE # 534XXP?.

REV	DATE	DESCRIPTION	ECR	CHG'D BY	APPR'D BY	DATE
B	8/10/99	ADDED EQ LED PARTS		R00131	REM	
A		INITIAL_ISSUE				

SIGNATURES:	DATE:	 11880 BORMAN DR. ST. LOUIS, MISSOURI 63146	
DRAWN: REM	3/3/99		
CHK'D:		PROJECT NAME:	
APP'D:		SVT3PROa	
ORIGINAL ISSUED:		DRAWING NAME:	
PLOT DATE:		PWA_-_PREAMP_ASSY	
PLOT TIME:		DRAWING NO. 07-534-XX	REV. -
FILE NAME:		SCALE: NONE	SHEET: 1_OF_3

REF. DES.	PART #	DESCRIPTION
C1	10A103-11	0.01 100V
C2	10-104-10	0.1 400V
C3	10-104-10	0.1 400V
C4	10A104-01	0.1 50V
C5	10A221-11	220pf 100V
C6	10A471-11	470pf 100V
C7	12-476-42	47 450V
C8	10A472-11	0.0047 100V
C9	10A104-01	0.1 50V
C10	10-104-10	0.1 400V
C11	10A471-11	470pf 100V
C12	10A153-01	0.015 50V
C13	10A102-11	0.001 100V
C14	10A103-11	0.01 100V
C15	10A150-21	15pf 200V
C16	10A101-21	100pf 200V
C17	10A472-11	0.0047 100V
C18	10R104-03	0.1 100V
C19	10-223-10	0.022 400V
C20	10-684-21	0.68 250V
C21	10A102-11	0.001 100V
C22	10-223-10	0.022 400V
C23	10-684-21	0.68 250V
C24	10F224-03	0.22 100V
C25	12-337-03	330 80V
C26	10R104-03	0.1 100V
C27	10R104-03	0.1 100V
C28	10A471-11	470pf 100V
C29	10A104-01	0.1 50V
C30	10A104-01	0.1 50V
C31	10R333-02	0.033 100V
C32	10R333-02	0.033 100V
C33	10F154-02	0.15 100V
C34	10F224-03	0.22 100V
C35	12R105-51	1.0 NP 50V
C36	10A473-11	0.047 100V
C37	10A223-01	0.022 50V
C38	10F224-03	0.22 100V
C39	10R104-03	0.1 100V
C40	10A153-01	0.015 50V
C41	10A682-01	0.0068 50V
C42	10R473-03	0.047 100V
C43	10R473-03	0.047 100V
C44	10A222-11	0.0022 100V
C45	10A102-11	0.001 100V
C46	10R333-02	0.033 100V
C47	10A101-21	100pf 200V
C48	10R682-03	0.0068 100V
C49	10A471-11	470pf 100V
C50	10R222-02	0.0022 100V
C51	10R152-01	0.0015 100V
C52	10A331-11	330pf 100V
*C59	12R226-32	22 35V
C60	12R226-32	22 35V
C61	10A104-01	0.1 50V
C62	10A223-01	0.022 50V
C63	10A104-01	0.1 50V
C64	10A331-11	330pf 100V
C65	10A101-21	100pf 200V
C66	12R106-81	10 NP 50V
C67	10A331-11	330pf 100V
C68	12R106-81	10 NP 50V
C69	12R106-81	10 NP 50V
C70	10A102-11	0.001 100V
C71	10A104-01	0.1 50V
C72	10A104-01	0.1 50V

C73	10A222-11	0.0022 100V
C74	10R104-03	0.1 100V
C75	10F224-03	0.22 100V
*C79	10A101-21	100pf 200V
D1	21A914-01	1N914
D2	21A914-01	1N914
D3	21A914-01	1N914
D4	21A914-01	1N914
D5	21A914-01	1N914
D6	21A914-01	1N914
*D8	21-502-01	GREEN LED
D9	21A914-01	1N914
D10	21A914-01	1N914
D11	21A914-01	1N914
*D18	21A914-01	1N914
D19	21A914-01	1N914
D20	21A914-01	1N914
D21	21-501-01	RED LED
D22	21-502-01	GREEN LED
*D25	21A914-01	1N914
D26	21A914-01	1N914
D27	21A914-01	1N914
IC1	37-072-01	TL072 DUAL OPAMP
IC2	37-074-01	TL074 QUAD OPAMP
IC3	37-074-01	TL074 QUAD OPAMP
IC4	37-074-01	TL074 QUAD OPAMP
IC5	37-074-01	TL074 QUAD OPAMP
J1	39-119-01	T/S JACK
J2	39-308-01	MALE XLR
J3	39-117-01	T/R/S JACK
J4	39-116-01	T/S JACK
J5	17-310-06	6 PIN HEADER
J6	17-310-14	14 PIN HEADER
J7	99-124-03	14PIN 6" FLT RIB
J8	17-310-06	6 PIN HEADER
J9	17-450-09	9 PIN SOCKET
J10	17-450-09	9 PIN SOCKET
J11	17-450-09	9 PIN SOCKET
JW1-31	76-000-05	JUMPER
*JW33-38	76-000-05	JUMPER
L1	94-602-32	800mH
P1	70-503-22	50KA
P2	70-105-22	1M
P3	70-133-01	50KL
P4	70-105-22	1M
P5	70-503-22	50KA
P6	70-105-22	1M
P7	70-104-21	100KL
P8	70-104-21	100KL
P9	70-104-21	100KL
P10	70-104-21	100KL
P11	70-104-21	100KL
P12	70-104-21	100KL
P13	70-104-21	100KL
P14	70-104-21	100KL
P15	70-104-21	100KL
P16	70-104-21	100KL
P17	70-103-28	10KA W/PULL SWTCH
V1	95F927-01	12AX7A
V2	95F927-01	12AX7A
V3	95F927-01	12AX7A

*Q1	96R013-01	MPSA13	DARL
Q3	96R112-01	J112	N JFET
Q4	96R175-01	J175	P JFET
Q5	96R013-01	MPSA13	DARL
Q6	96R175-01	J175	P JFET
Q7	96R510-01	2N5210	NPN
Q8	96R510-01	2N5210	NPN
R1	76-472-01	4.7K	
R2	76-473-01	47K	
R3	76-683-01	68K	
R4	76-473-01	47K	
R5	76-222-01	2.2K	
R6	76-335-01	3.3M	
R7	76-153-01	15K	
R8	76-683-01	68K	
R9	77-104-02	100K	1% 1/2W
R10	76-105-01	1M	
R11	76-152-01	1.5K	
R12	76-223-01	22k	
R13	77-474-02	475K	1% 1/2W
R14	76-472-01	4.7K	
R15	76-104-01	100K	
R16	76-683-01	68K	
R17	76-105-01	1M	
R18	76-473-01	47K	
R19	76-335-01	3.3M	
R20	76-335-01	3.3M	
R21	76-224-01	220K	
R22	78-202-01	2K	2W
R23	76-224-01	220K	
R24	76-224-01	220K	
R25	76-224-01	220K	
R26	76-335-01	3.3M	
R27	76-224-01	220K	
R28	76-224-01	220K	
R29	76-152-01	1.5K	
R30	76-472-01	4.7K	
R31	77-104-02	100K	1% 1/2W
R32	76-152-01	1.5K	
R33	76-104-01	100K	
R34	76-683-01	68K	
R35	76-105-01	1M	
R36	76-224-01	220K	
R37	76-223-01	22K	
R38	76-124-01	120K	
R39	76-224-01	220K	
R40	77-224-02	221K	1% 1/2W
R41	76-331-01	330	
R42	76-103-01	10K	
R43	76-105-01	1M	
R44	77-474-02	475K	1% 1/2W
R45	76-332-01	3.3K	
R46	77-104-02	100K	1% 1/2W
R47	76-272-01	2.7K	
R48	76-224-01	220K	
R49	76-102-01	1K	
R50	77-104-02	100K	1% 1/2W
R51	76-223-01	22K	
R52	76-105-01	1M	
R53	76-683-01	68K	
R54	76-474-01	470K	
R55	76-683-01	68K	
R56	76-105-01	1M	
R57	76-152-01	1.5K	
R58	76-152-01	1.5K	
R59	78-221-10	220	10W
R61	76-472-01	4.7K	
R62	76-474-01	470K	
R63	76-124-01	120K	
R64	76-223-01	22k	
R65	76-333-01	33K	
R66	76-154-01	150K	
R67	76-153-01	15K	
R68	76-103-01	10K	
R69	76-222-01	2.2k	
R70	76-152-01	1.5K	

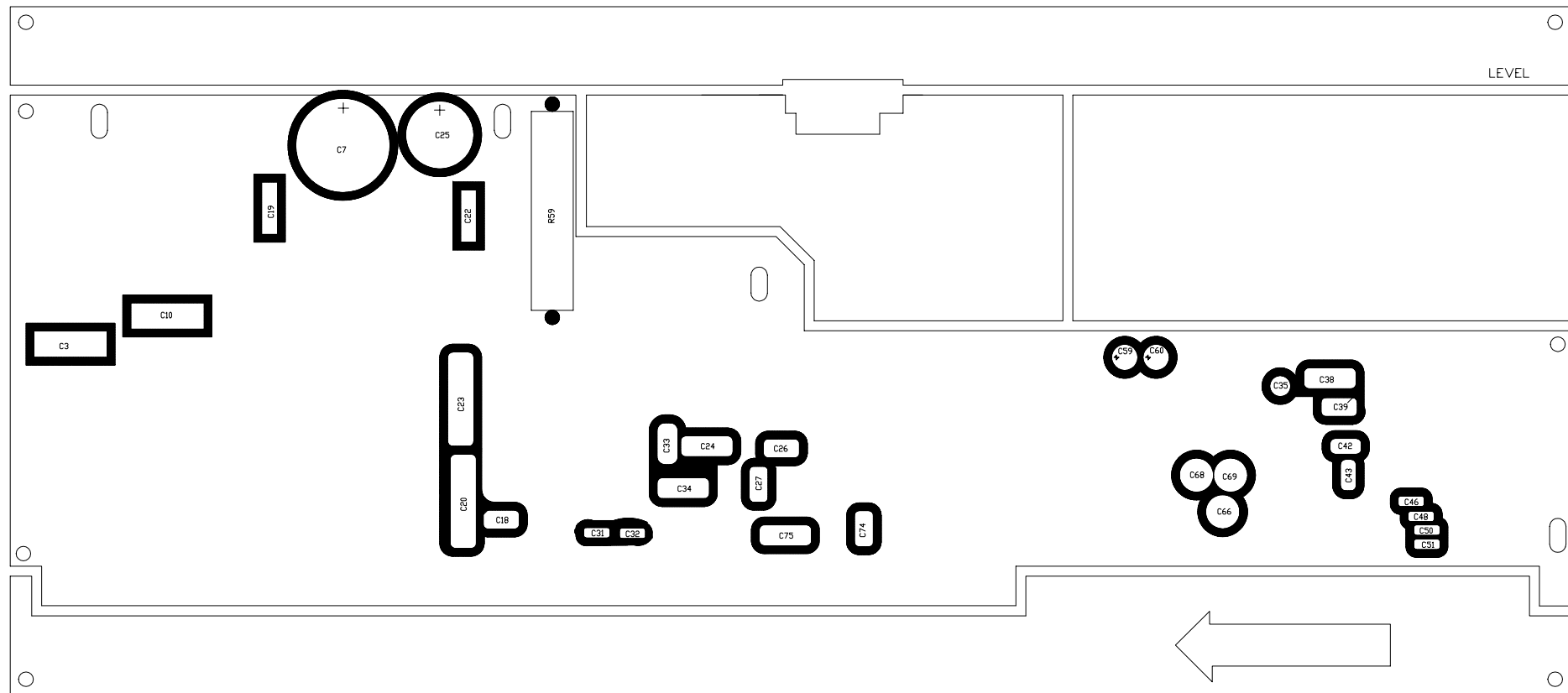
R71	76-474-01	470K
R72	76-103-01	10K
R73	76-104-01	100K
R74	76-104-01	100K
R75	76-224-01	220K
R76	76-474-01	470K
R77	76-474-01	470K
R78	76-474-01	470K
R79	76-224-01	220K
R80	76-222-01	2.2K
R81	76-184-01	180K
R82	76-472-01	4.7K
R83	76-184-01	180K
R84	76-472-01	4.7K
R85	76-184-01	180K
R86	76-472-01	4.7K
R87	76-184-01	180K
R88	76-472-01	4.7K
R89	76-224-01	220K
R90	76-472-01	4.7K
R91	76-334-01	330K
R92	76-472-01	4.7K
R93	76-274-01	270K
R94	76-472-01	4.7K
R95	76-224-01	220K
R96	76-332-01	3.3K
R97	76-153-01	15K
R98	76-332-01	3.3K
R99	76-103-01	10K
R100	76-332-01	3.3K
R101	76-103-01	10K
R102	76-222-01	2.2K
R103	76-102-01	1K
R104	76-103-01	10K
R105	76-683-01	68K
R106	76-472-01	4.7K
R107	76-222-01	2.2K
*R109	76-222-01	2.2K
R110	76-102-01	1K
R111	76-511-02	511 1%
R112	76-511-02	511 1%
R113	76-151-01	150
R114	76-222-01	2.2K
R115	76-104-01	100K
R116	76-104-01	100K
R117	76-223-01	22K
R118	76-223-01	22K
R119	76-474-01	470K
S1	88-303-02	QUAD SWITCH
S2	88-303-02	QUAD SWITCH
S3	88-108-01	5 PDS. SWITCH
S4	88-303-02	QUAD SWITCH
S5	88-302-01	DUAL SWITCH
T1	94-025-11	TRANSFORMER

* BREAK IN SEQUENCE


P/N	DESCRIPTION	QTY.
51-149-01	PC MOUNT GND BRKT	2
06A534-02	PC BOARD	1

ASSY # 07-534-02

B	8/10/99	ADDED Q1,D27,R69,R70 TO LIGHT UP EQ ON LED	R00131	REM		
A		INITIAL ISSUE				
REV:	DATE:	DESCRIPTION	ECR/ECN NO:	CHNG'D BY:	APPR'D BY:	DATE:
THE INFORMATION CONTAINED ON THIS DRAWING IS PROPRIETARY TO ST. LOUIS MUSIC, INC.						
SIGNATURES:		DATE:				
DRAWN: REM		3/10/99		11880 Borman Dr. St. Louis, Missouri 63146		
CHK'D:				FIRST USED ON:		
RLS'D:				SVT3PROa		
TOLERANCES:		DRAWING SIZE: C		DRAWING TITLE:		
		DRAWING TYPE: ASSY/GOOP		PWA - PREAMP ASSY		
		CLASS CODE:		DRAWING NO.:		
SCALE: NONE		SHEET: 2 OF 3		07-534-XX		



GOOP PER STANDARD GOOPING PROCEDURES

B	8/10/99	ADDED Q1,D27,R69,R70 TO LIGHT UP EQ ON LED	R00131	REM		
A		INITIAL ISSUE				
REV:	DATE:	DESCRIPTION	ECR/ECN NO:	CHNG'D BY:	APPR'D BY:	DATE:
THE INFORMATION CONTAINED ON THIS DRAWING IS PROPRIETARY TO ST. LOUIS MUSIC, INC.						
SIGNATURES:		DATE:				
DRAWN:	REM	3/10/99	 11880 Borman Dr. St. Louis, Missouri 63146			
CHK'D:			FIRST USED ON:			
RLS'D:			SVT3PRO α			
TOLERANCES:	DRAWING SIZE:	C	DRAWING TITLE:			
	DRAWING TYPE:	ASSY/GOOP	PWA - PREAMP ASSY			
	CLASS CODE:		DRAWING NO.:			
	SCALE:	NONE	07-534-XX			
			SHEET: 3 OF 3			