

ASSY P/N 07-426-01

REV	DATE	BY	CHK'D	DESCRIPTION
15	6-25-98	WFB		CHG'D SCHEMATIC PER E980015 ADDENDUM NO CHANGES TO PICTORIAL/UPPED REVISION LEVEL
14	5/14/98	REM		RADIAL CONVERSION PER ECO970587 & 980015.
13	09/10/97	SWR		CHANGED SCHEMATIC, PICTORIAL NOT AFFECTED. PER ECO #970400.
12	11/13/96	REM		REARRANGED PARTS & CIRCUIT To use 5x20mm FUSE 23-926-01 FUSE CLIP TO BE -03 PER E960449.
11	not used			
10	09/10/96	SWR		CREATED GOOP DRAWING (SHEET 3 OF 3). PER DCO #D960354.
9	08/14/96	LMA		DEL: 30-408-52 (5), ADD: 30-440-52 (5) PER C.O.
8	05/20/96	LMA	DAP	QTY CHG ON 30-408-52 FROM 13 TO 5 ADD 30-635-01 (8) PER E950030
7	11/08/95	DMM		CHANGED 39-116-51 TO 39-116-01 PER E950348

REV HISTORY... REV 1-15

REV	DATE	BY	CHK'D	DESCRIPTION
6	10/04/95	JCJ		ADDED Q2 DETAIL PER ECO# E950300
5	01/03/95	ERW		CHANGE VALUE OF C27, R13, R28-31 & R40-43.
4	05/16/93	B.C.		CHANGED 30-440-52 (4-40 X 3/8") SCREWS TO 30-408-52 (4-40 X 1/2") SCREWS PER E203
3	11/23/93	ERW		CHANGED VALUES OF R49 & R72 TO 10K CHANGED Q15 TO MPSA06
2	08/10/93	SWR		CHANGED P/N FOR PARTS J2-J7.
1	08/04/93	SWR		ROTATED J10 180°.

REV	DATE	DESCRIPTION	ECR/ECN NO.	CHNG'D BY	APPR'D BY	DATE
16	10/13/99	F2 P/N WAS 23-321-05	N00128	REM		
THE INFORMATION CONTAINED ON THIS DRAWING IS PROPRIETARY TO ST. LOUIS MUSIC, INC.						
SIGNATURES:		DATE:				
DRAWN:	S RADER	2/16/93				
CHK'D:	DAVE P	3/12/93		FIRST USED ON:		
RLS'D				SVT-3 PRO		
TOLERANCES:		DRAWING SIZE: C		DRAWING TITLE:		
		DRAWING TYPE: ASSY/GOOP		PWR. AMP. PICTORIAL		
		CLASS CODE:		DRAWING NO.:		
		SCALE: NONE		07P426-01		
		SHEET: 1 OF 3				

11880 Borman Dr.
St. Louis, Missouri
63146

SVT-3 PRO

PWR. AMP. PICTORIAL

07P426-01

REF. DES	PART #	DESCRIPTION
AP1	71-103-02	10K TRIMPOT
C1	10-332-01	0.0033 UL/VDE
C2	10-332-01	0.0033 UL/VDE
C3	12R226-32	22 35V
C4	10-104-10	0.1 400V
C5	12-476-42	47 450V
C6	10-684-10	0.68 400V
C7	10-684-10	0.68 400V
C8	10A104-01	0.1 50V
C9	10A223-01	0.022 50V
C10	10A223-01	0.022 50V
C11	12R227-62	220 63V
C12	12-225-66	2.2 63V
C13	10A104-01	0.1 50V
C14	12-476-42	47 450V
C15	12-476-42	47 450V
C16	12R475-20	4.7 200V
C17	12R475-20	4.7 200V
C18	12-568-80	5600 80V
C19	12-568-80	5600 80V
C20	10-104-03	0.1 100v
C21	12-568-80	5600 80V
C22	12-568-80	5600 80V
C23	10-104-03	0.1 100v
C24	12R476-35	47 35V
C25	12R476-35	47 35V
C26	10A473-11	0.047 100V
C27	10R473-03	0.047 100V
C28	10-104-10	0.1 400V
C29	12R106-10	10 100V
C30	10-104-03	0.1 100v
C31	12R475-20	4.7 200V
C32	12R475-20	4.7 200V
C33	10A101-21	100pF 200V
* D2	21A146-01	1N746 3.3V
D3	21A146-01	1N746 3.3V
D4	21A443-01	1N4743 13V/.5W
D5	21A443-01	1N4743 13V/.5W
D6	21A443-01	1N4743 13V/.5W
D7	21A443-01	1N4743 13V/.5W
D8	21A370-01	1N3070
D9	21A370-01	1N3070
D10	21A370-01	1N3070
D11	21A454-01	1N4754 39V/1W
D12	21A914-01	1N914
D13	21A914-01	1N914
D14	21A407-01	1N4007
D15	21A407-01	1N4007
D16	21A407-01	1N4007
D17	21A407-01	1N4007
D18	21A407-01	1N4007
D19	21A407-01	1N4007
D20	21-553-01	1N5353 16V
D21	21A443-01	1N4743 13V/.5W
D22	21A819-01	1N5819
D23	21-553-01	1N5353 16V
D24	21A914-01	1N914
* D26	21A914-01	1N914
D27	21A146-01	1N746 3.3V
D28	21A370-01	1N3070
D29	21A370-01	1N3070
D30	21A146-01	1N746 3.3V
D31	21A407-01	1N4007
D32	21A407-01	1N4007
FC1	23-926-03	5x20mm FUSE CLIP
FC2	23-926-03	5x20mm FUSE CLIP
FH1	23-346-01	FUSE HOLDER
F1	23A301-01	1A 250V PICD FUSE
F2	23-501-05	1/8A SB 250V FUSE 5X20mm
IC1	37-074-01	TL074

REF. DES	PART #	DESCRIPTION
J1	39-117-01	T/R/S JACK
J2	39-116-01	T/S JACK
J3	39-116-01	T/S JACK
J4	39-116-01	T/S JACK
J5	39-116-01	T/S JACK
J6	39-116-01	T/S JACK
J7	39-116-01	T/S JACK
J8	17-604-01	LINE-CORD CONNECTOR
J9	17-310-14	156 HEADER
J10	17-309-02	CONN LOCKING
J11	17-450-09	9 PIN TUBE SOCKET
J12	17-450-09	9 PIN TUBE SOCKET
* J14	17-500-01	GNDLUG
J15	17-836-01	.250 TAB
J16	17-836-01	.250 TAB
J17	17-836-01	.250 TAB
J18	17-836-01	.250 TAB
J19	17-836-01	.250 TAB
J20	17-836-01	.250 TAB
J21	17-836-01	.250 TAB
J22	17-836-01	.250 TAB
J23	17-836-01	.250 TAB
J24	17-836-01	.250 TAB
J25	17-836-01	.250 TAB
J26	17-836-01	.250 TAB
J27	17-836-01	.250 TAB
J28	17-836-01	.250 TAB
J29	17-836-01	.250 TAB
J30	17-836-01	.250 TAB
J31	17-836-01	.250 TAB
J32	17-836-01	.250 TAB
J33	17-836-01	.250 TAB
J34	17-195-06	6 PIN HIGH CURRENT HEADER
J35	17-836-01	.250 TAB
K1	82-090-01	RELAY
Q1	96-050-01	TIP-50 500V NPN
Q2	96R006-01	MPSA06
Q3	96-515-01	2N5415
Q4	96-340-01	2N3440
Q5	96R006-01	MPSA06
Q6	96R056-01	MPSA56
Q7	96-014-02	IRFP240 200V NMOFET
Q8	96-014-02	IRFP240 200V NMOFET
Q9	96-014-02	IRFP240 200V NMOFET
Q10	96-014-02	IRFP240 200V NMOFET
Q11	96-914-02	IRFP9240 200V PMOSFET
Q12	96-914-02	IRFP9240 200V PMOSFET
Q13	96-914-02	IRFP9240 200V PMOSFET
Q14	96-914-02	IRFP9240 200V PMOSFET
Q15	96R006-01	MPSA06
Q16	96-031-03	TIP-31C
Q17	96-032-03	TIP-32C
R1	76-103-01	10K
R2	76-105-01	1M
R3	76-821-01	820
R4	77-104-02	100K 1/2W 1%
R5	77-154-02	150K 1/2W 1%
R6	76-105-01	1M
R7	76-152-01	1.5K
R8	77-222-02	2.21K 1/2W 1%
R9	78-563-01	56K 2W
R10	76-332-01	3.3K
R11	76-223-01	22K
R12	76-224-01	220K
R13	76-225-01	2.2M
R14	76-222-01	2.2K
R15	78-472-01	4.7K 2W

REF. DES	PART #	DESCRIPTION
R16	76-153-01	15K
R17	76-153-01	15K
R18	76-224-01	220K
R19	76-222-01	2.2K
R20	78-472-01	4.7K 2W
R21	78-221-10	220 10W
R22	78-472-01	4.7K 2W
R23	76-124-01	120K
R24	76-272-01	2.7K
R25	76-331-01	330
R26	76-272-01	2.7K
R27	76-331-01	330
R28	77-470-03	47 1/2W
R29	77-470-03	47 1/2W
R30	77-470-03	47 1/2W
R31	77-470-03	47 1/2W
R32	78-470-05	0.47 5W
R33	78-470-05	0.47 5W
R34	78-470-05	0.47 5W
R35	78-470-05	0.47 5W
R36	78-470-05	0.47 5W
R37	78-470-05	0.47 5W
R38	78-470-05	0.47 5W
R39	78-470-05	0.47 5W
R40	77-470-03	47 1/2W
R41	77-470-03	47 1/2W
R42	77-470-03	47 1/2W
R43	77-470-03	47 1/2W
R44	76-223-01	22K
R45	76-472-01	4.7K
R46	78-102-05	1K 5W
R47	76-223-01	22K
R48	76-222-01	2.2K
R49	76-103-01	10K
R50	78-202-01	2K 2W
R51	78-221-10	220 10W
* R61	76-104-01	100K
R62	76-104-01	100K
R63	78-221-10	220 10W
R64	78-221-10	220 10W
R65	77-470-02	47.5 1/2W 1%
R66	77-470-02	47.5 1/2W 1%
R67	76-271-01	270
R68	76-474-01	470K
R69	76-105-01	1M
R70	76-273-01	27K
R71	76-472-01	4.7K
R72	76-103-01	10K
R73	76-473-01	47K

REF. DES	PART #	DESCRIPTION
R74	76-153-01	15K
R75	76-152-01	1.5K
R76	76-104-01	100K
R77	76-152-01	1.5K
R78	76-105-01	1M
R79	77-105-02	1M 1/2W 1%
R80	77-152-01	1.5K 1/2W
R81	78-273-01	27K 1W
TS1	37R350-01	LM-35 TEMP SENSOR
V1	97-927-01	12AX7A
V2	95-126-01	12AU7

HARDWARE USAGE


PART #	DESCRIPTION	QTY
30-440-52	4-40 3/8" SCREW	5
30-442-52	4-40 KEPS NUT	3
30-635-01	6-32 x 1/2" HEX	8
30-638-53	6-32 3/8" SCREW	2
30-700-01	6-32 KEPS NUT	2
33-426-01	MAIN HEATSINK	1
33-541-01	TO-220 HEATSINK	1
33-601-01	TO-39 HEATSINK	1
35-043-01	SHOULDER BUSHING	1
35-575-01	K10-58 SIL PAD	3
35-575-02	K10-104 SIL PAD	8
47-700-01	1/8A FUSE LABEL	1
68-602-02	RELAY COVER	1

MISCELLANEOUS

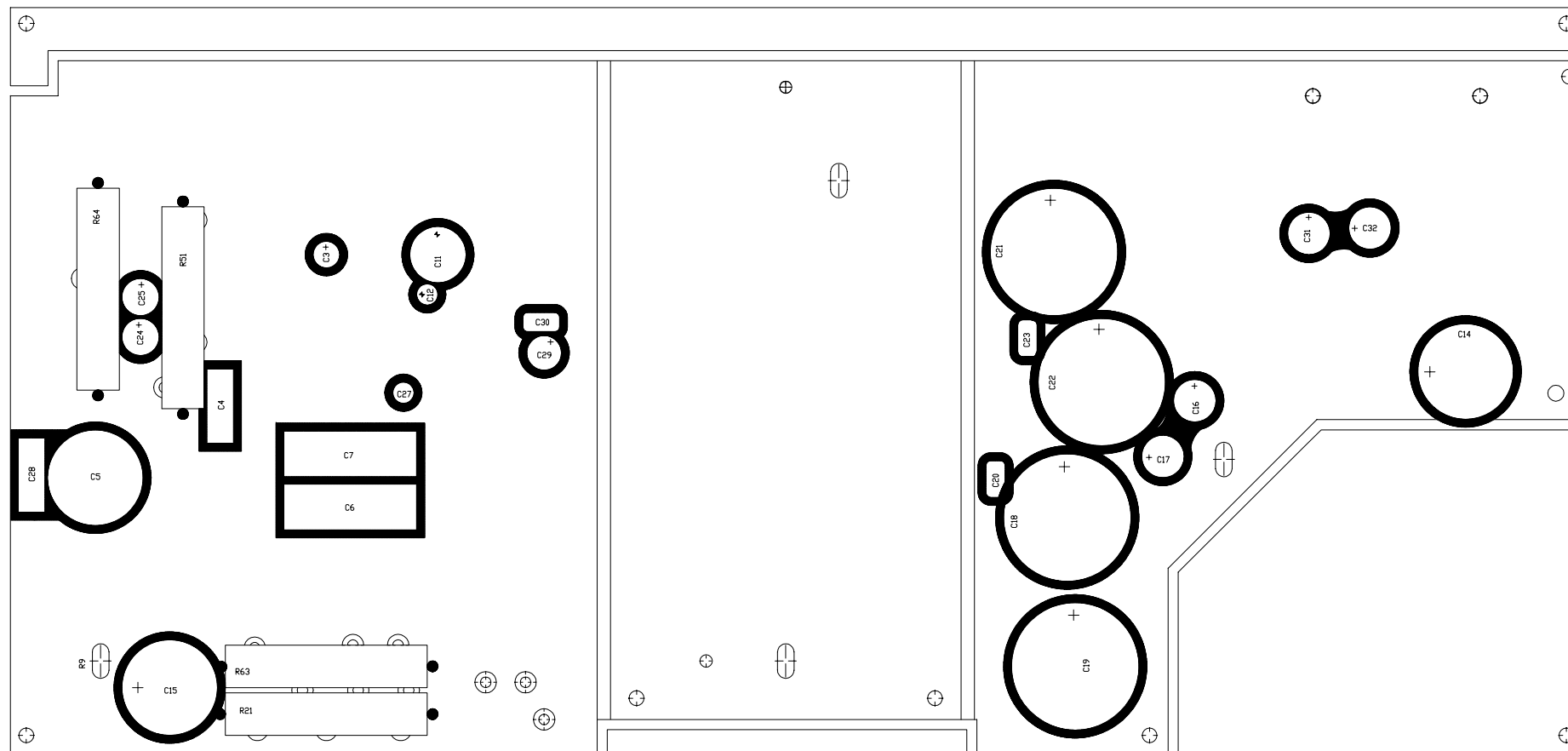
PART #	DESCRIPTION	QTY
76-000-01	"0" OHM RESISTOR	38
76-000-05	JUMPER WIRE	5
(JW2, 7, 29, 40, 42)		

* SKIP IN SEQUENCE

SEE SHT 1 FOR COMPLETE REV HISTORY


16	10/13/99	F2 P/N WAS 23-321-05	N00128	REM		
REV:	DATE:	DESCRIPTION	ECR/ECN NO:	CHNG'D BY:	APPR'D BY:	DATE:
THE INFORMATION CONTAINED ON THIS DRAWING IS PROPRIETARY TO ST. LOUIS MUSIC, INC.						
SIGNATURES:			DATE:			
DRAWN: S RADER		2/16/93				
CHK'D: DAVE P		3/12/93		FIRST USED ON:		
RLS'D				SVT-3 PRO		
TOLERANCES:		DRAWING SIZE: C		DRAWING TITLE:		
		DRAWING TYPE: ASSY/GOOP		PWR. AMP. PICTORIAL		
		CLASS CODE:		DRAWING NO.:		
SCALE: NONE		SHEET: 2 OF 3		07P426-01		

11880 Borman Dr.
St. Louis, Missouri
63146



GOOP PER STANDARD GOOPING PROCEDURES

SEE SHT 1 FOR REV HISTORY

16	10/13/99	F2 P/N WAS 23-321-05	N00128	REM		
REV:	DATE:	DESCRIPTION	ECR/ECN NO:	CHNG'D BY:	APPR'D BY:	DATE:
THE INFORMATION CONTAINED ON THIS DRAWING IS PROPRIETARY TO ST. LOUIS MUSIC, INC.						
SIGNATURES:			DATE:		 11880 Borman Dr. St. Louis, Missouri 63146	
DRAWN: S RADER		2/16/93				
CHK'D: DAVE P		3/12/93		FIRST USED ON:		SVT-3 PRO
RLS'D:				DRAWING TITLE:		
TOLERANCES:		DRAWING SIZE: C		DRAWING TYPE: ASSY/GOOP		DRAWING NO.:
		DRAWING TYPE: ASSY/GOOP		CLASS CODE:		
		SCALE: NONE		SHEET: 3 OF 3		07P426-01