

TO ADJUST BIAS:

ALLOW UNIT TO WARM UP FOR 20 MINUTES. ADJUST BIAS CONTROLS SO THAT ONLY THE GREEN LEDS ARE LIT. FOR UNMATCHED TUBES THIS CONDITION MAY NOT BE ABLE TO BE MET. IF SO ADJUST CONTROLS SO THAT ONLY THE RED LEDS ARE LIT. SEE THE OWNER'S MANUAL FOR TROUBLESHOOTING TIPS USING THE BIAS CONTROLS AND LEDS.

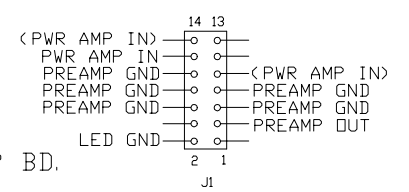
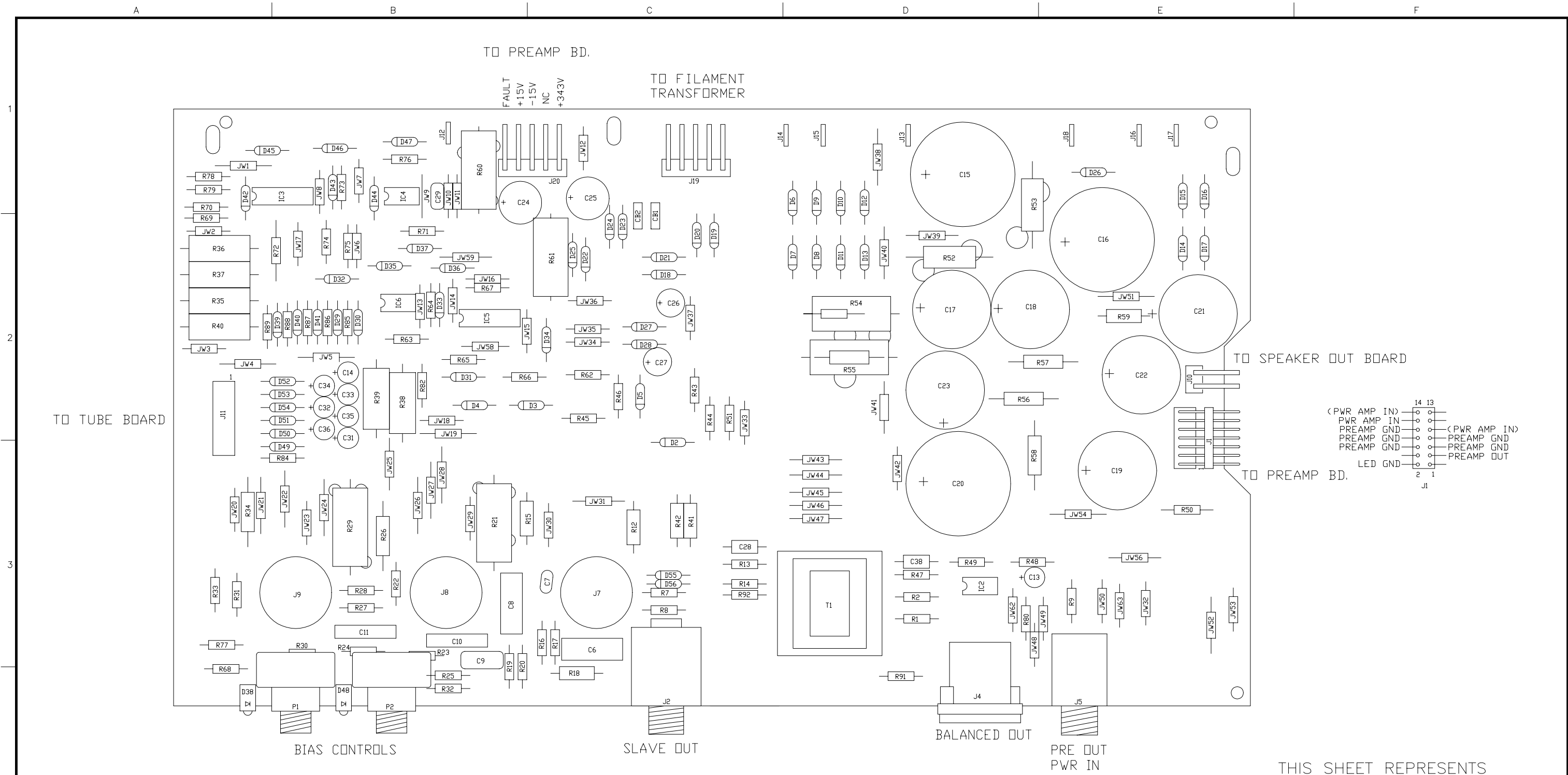
THIS DRAWING SUPERSEDES 07-419-03/11

PART NO. IS 07-419-04

B	7-28-00	CHANGED PARTS LIST	D000685	RLB		
A	4-11-00	INITIAL ISSUE	D000624			
REV:	DATE:	DESCRIPTION	ECR/ECN NO:	CHNG'D BY:	APPR'D BY:	DATE:
THE INFORMATION CONTAINED ON THIS DRAWING IS PROPRIETARY TO ST. LOUIS MUSIC, INC.						
SIGNATURES:			DATE:			
DRAWN: RLB		12-22-99				
CHK'D:		FIRST USED ON:				
RLS'D:		SVT-2PRO				
TOLERANCES:		DRAWING SIZE: C		DRAWING TITLE:		
		DRAWING TYPE: ASSEMBLY		PWA, POWER AMP		
		CLASS CODE:		DRAWING NO.:		
		SCALE: 1:1 SHEET: 1 OF 4		07-419-XX		

*SLM Electronics* 11880 Borman Dr. St. Louis, Missouri 63146





THIS SHEET REPRESENTS  
PART NO. 07-419-12

TO ADJUST BIAS:

ALLOW UNIT TO WARM UP FOR 20 MINUTES.  
ADJUST BIAS CONTROLS SO THAT ONLY THE GREEN LEDES ARE LIT. FOR UNMATCHED TUBES THIS CONDITION MAY NOT BE ABLE TO BE MET. IF SO ADJUST CONTROLS SO THAT ONLY THE RED LEDES ARE LIT. SEE THE OWNER'S MANUAL FOR TROUBLESHOOTING TIPS USING THE BIAS CONTROLS AND LEDES.

B	7-28-00	CHANGED PARTS LIST	D000685	RLB		
A	4-11-00	INITIAL ISSUE	D000624			
REV:	DATE:	DESCRIPTION	ECR/ECN NO:	CHNG'D BY:	APPR'D BY:	DATE:
THE INFORMATION CONTAINED ON THIS DRAWING IS PROPRIETARY TO ST. LOUIS MUSIC, INC.						
SIGNATURES:			DATE:			
DRAWN: RLB			12-22-99			
CHK'D:			FIRST USED ON:			
RLS'D:			SVT-2PRO			
TOLERANCES:		DRAWING SIZE: C		DRAWING TITLE:		
		DRAWING TYPE: ASSEMBLY		PWA, POWER AMP		
		CLASS CODE:		DRAWING NO.:		
		SCALE: 1:1		07-419-XX		
		SHEET: 3 OF 4				

*SLM Electronics* 11880 Borman Dr.  
St. Louis, Missouri  
63146

