

A

B

C

D

1

1

2

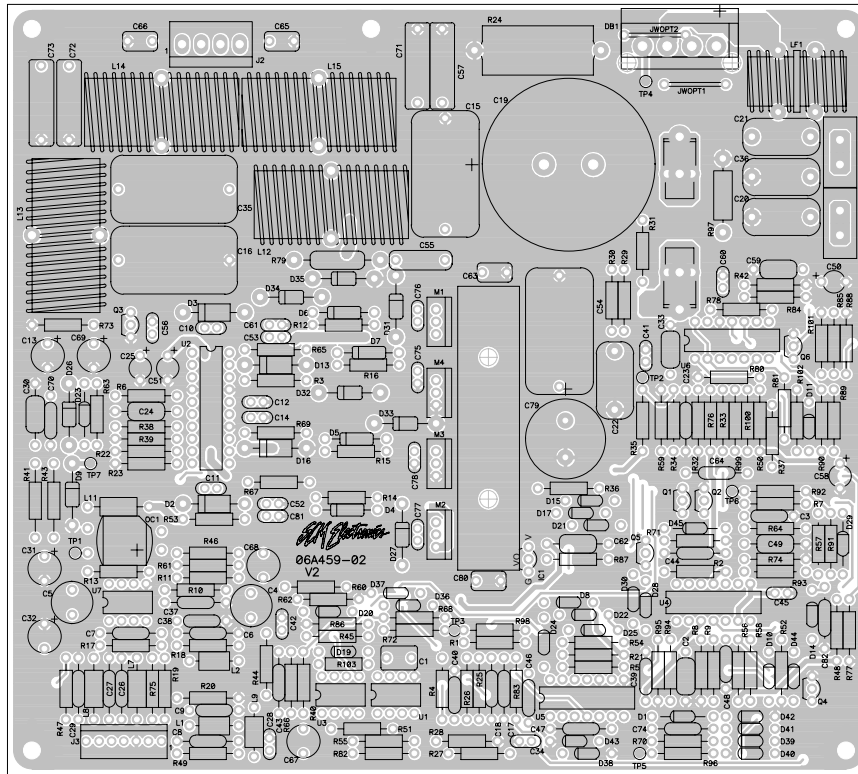
2

3

3

4

4



SILKSCREEN

FOR ASSEMBLY P/N: 07-459-02
USE SCHEMATIC # 07s459-xx

NOTES:
1. GOOP IN ACCORDANCE WITH PRODUCTION S.O.P.

CAUTION:
THIS ASSEMBLY DRAWING IS PROVIDED FOR USE BY QUALIFIED PERSONNEL.
TO AVOID RISK OF ELECTRIC SHOCK, REFER SERVICING TO QUALIFIED SERVICE PERSONNEL.
DO NOT PERFORM ANY SERVICING BEYOND THAT EXPLAINED IN THE OPERATING INSTRUCTIONS.

D23, D26, C55, C67, C69, C70, JWOPT1, JWOPT2,
Q3, R46, R61, R63, R73, R79 AND R82 NOT USED ON -02

1	06/06/02	CREATED (0) VERSION	MS004	WFS		
0	2-26-02	CONTROL ISSUE				
REV	Date	DESCRIPTION	Cr(s)/Ecr(s)	Chgd By	Appvd by	Date
THIS INFORMATION CONTAINED ON THIS DRAWING IS PROPRIETARY TO ST. LOUIS MUSIC, INC.						
Signatures:		Date:	 <small>© 1998 St. Louis Music, Inc. St. Louis, MO 63106</small>			
Drawn: RLB		2-26-02				
Checked:			First Used On: PB250			
Released:						
Plot Date: Thu Jun 06, 2002		Drawing Size: B	Drawing Title: BASS AMP			
Plot Time: 14:11:14		Drawing Type: ASSEMBLY				
Tolerance:		Class Code: NONE	Drawing Number: 07-459-XX			
		Sheet 1 of 2				

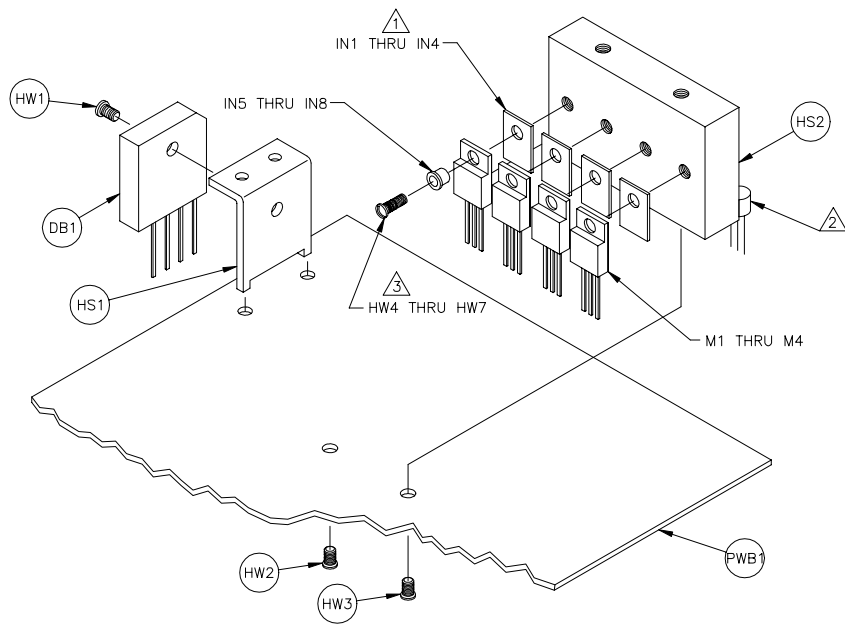
A

B

C


D

A | B | C | D



- 3 TORQUE SHALL BE 4IN-LBS MAXIMUM.
- 2 APPLY GREASE BETWEEN IC1 AND HS2, ENSURING IC1 CONTACTS HS1.
- 1 APPLY GREASE TO BOTH SIDES OF INSULATOR.

NOTES:

SEE SHEET 1 FOR REV HISTORY						
REV:	DATE:	DESCRIPTION	ECR/ECN NO:	CHNG'D BY:	APPR'D BY:	DATE:
THIS INFORMATION CONTAINED ON THIS DRAWING IS PROPRIETARY TO ST. LOUIS MUSIC, INC.						
SIGNATURES:			DATE:		 11880 Borman Dr. St. Louis, Missouri 63146	
DRAWN: RLB		2-26-02				
CHK'D:					FIRST USED ON:	
RLS'D					PB250	
TOLERANCES:		DRAWING SIZE: A		DRAWING TITLE:		
		DRAWING TYPE:		BASS AMP		
		CLASS CODE:		DRAWING NO.:		
		SCALE: 1:1		SHEET: 2 OF 2		07-459-XX

A | B | C | D