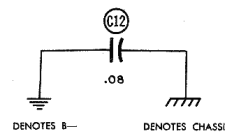


IF = 455KC



RESISTANCE READINGS

Item	Tube	Pin 1	Pin 2	Pin 3	Pin 4	Pin 5	Pin 6	Pin 7
V 1	6C4	†1KΩ	INF	55Ω	49Ω	†1KΩ	47KΩ	6Ω
V 2	12AU6	4.8Meg	.3Ω	25Ω	14Ω	†40KΩ	†48Ω	.3Ω
V 3	12BA6	1.5Meg	0Ω	55Ω	68Ω	†1KΩ	†1KΩ	68Ω
V 4	12AV6	6.8Meg	0Ω	0Ω	14Ω	500KΩ	0Ω	†220KΩ
V 5	50C5	180Ω	470KΩ	120Ω	68Ω	470KΩ	†1KΩ	†235Ω
V 6	35W4	INF	INF	120Ω	155Ω	155Ω	150Ω	100KΩ

† MEASURED FROM PIN 7 OF V6

1. DC voltage measurements taken with vacuum tube voltmeter; AC voltages measured at 1000 ohms per volt.
2. Socket connections are shown as bottom views.
3. Measured values are from socket pin to common negative.
4. Line voltage maintained at 117 volts for voltage readings.
5. Nominal tolerance on component values makes possible a variation of ± 15% in voltage and resistance readings.
6. Volume control at maximum, no signal applied for voltage measurements.