

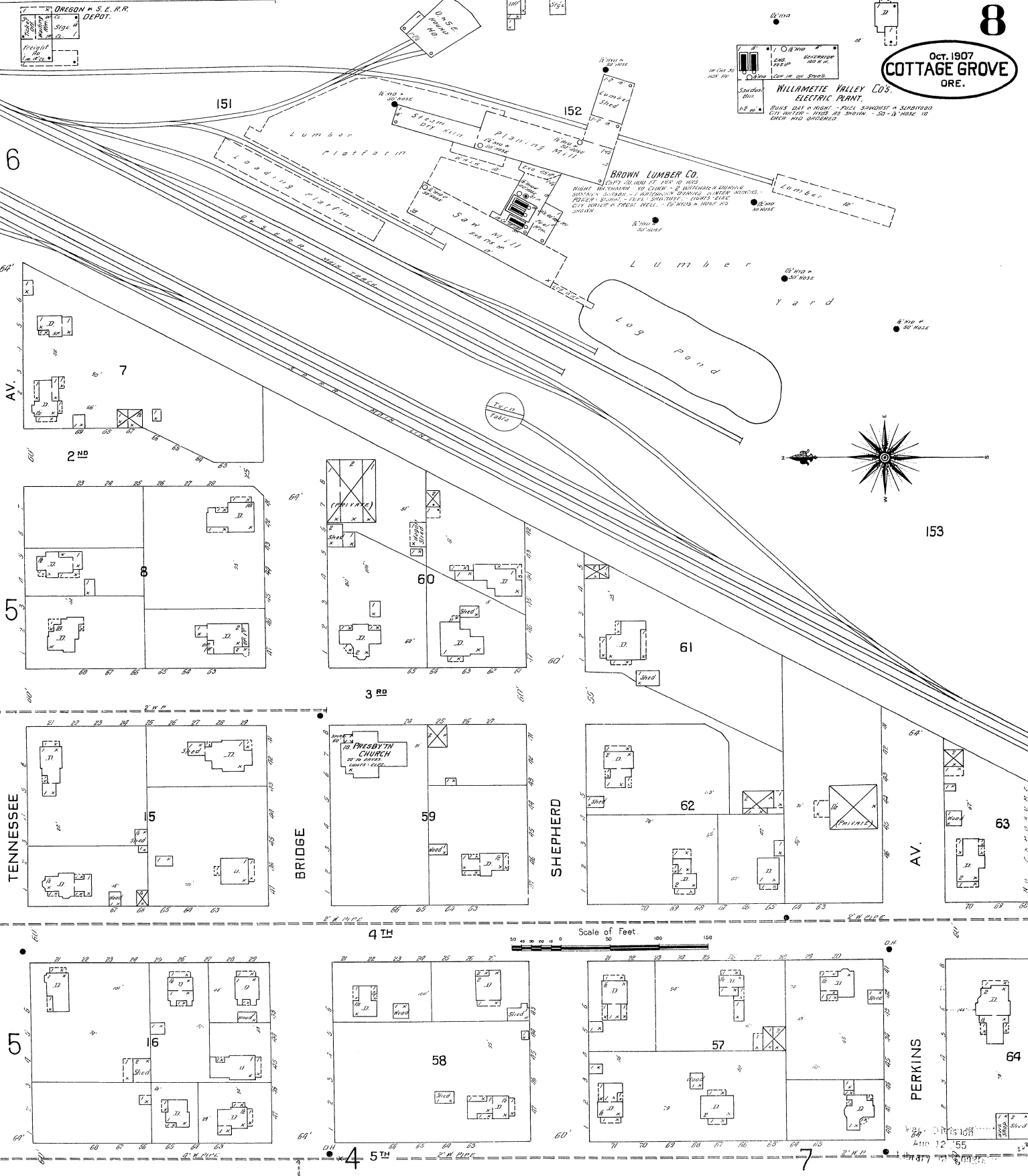
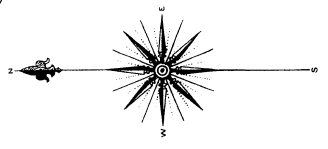
MILL

8
Oct. 1907
COTTAGE GROVE
ORE.

WILLAMETTE VALLEY CO'S
ELECTRIC PLANT.
BURNS 200' & 100' - FULL SANDWICH & SURROUND
CUT SWITCH - HOSE 1/2" BORE - 30' & HOSE 1/2"
EACH HAD ORDERED.

BROWN LUMBER CO.
RIGHT TWO THOUSAND - 100' & 100' - 2' HORIZONTAL LUMBER
SHAWAN SANDWICH - 1' AUTOMATIC DRIVING & WATER MACHINES
POWER SYSTEM - 100' & 100' - 2' HORIZONTAL LUMBER
CUT SWITCH & FRESH WELL - 10' & HOSE 1/2"
300' & 100'

LOS POND



Scale of Feet. 0 50 100

PERKINS

Atty 12 '55