

PCG-V505F/V505T3x/V505W PCG-V505DC1x/V505DC1Px/V505DH/V505DX/V505DXP PCG-V505CP PCG-V505MCP/V505MP/V505MLP/V505MSP/V505MTP

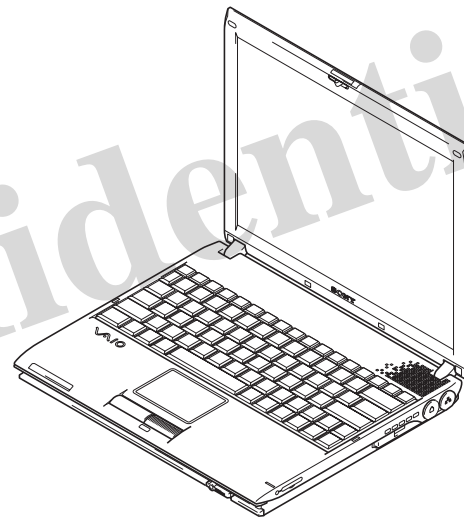
SERVICE MANUAL

Ver. 4 2003K

Revision History

Area	Model	Lineup
Japanese	Japanese	PCG-V505F/B PCG-V505T3/Px* PCG-V505T3x* PCG-V505W/P
American	US Canadian	PCG-V505DC1x* PCG-V505DC1Px* PCG-V505DH PCG-V505DX PCG-V505DXP
European	AEP/UK	PCG-V505CP
Asian/Oceania/ South Africa	Chinese	PCG-V505MCP
	Korean	PCG-V505MLP
	International	PCG-V505MP
	Thai	PCG-V505MSP
	Taiwan	PCG-V505MTP

* : CTO Model



- Design and specifications are subject to change without notice.
- 本機の仕様および外観は、改良のため予告なく変更することがありますが、ご了承ください。

NOTEBOOK COMPUTER

SONY®

Information in this document is subject to change without notice.

Sony, VAIO and CLIE are trademarks or registered trademarks of Sony. Microsoft, Windows, Windows Media, Outlook, Bookshelf and other Microsoft products are trademarks or registered trademarks of Microsoft Corporation in the United States and other countries. The word Bluetooth and the Bluetooth logo are trademarks of Bluetooth SIG, Inc. AMD, AMD logo, AMD Duron and combinations thereof, 3DNow!, are trademarks of Advanced Micro Devices, Inc. Intel Inside logo, Pentium and Celeron are trademarks or registered trademarks of Intel Corporation. Transmeta, the Transmeta logo, Crusoe Processor, the Crusoe logo and combinations thereof are trademarks of Transmeta Corporation in the USA and other countries. Graffiti, HotSync, PalmModem, and Palm OS are registered trademarks, and the HotSync logo and Palm are trademarks of Palm, Inc. or its subsidiaries. (M) and Motorola are trademarks of Motorola, Inc. Other Motorola products and services with (R) mark like Dragomball are the trademarks of Motorola, Inc.

All other names of systems, products and services in this manual are trademarks or registered trademarks of their respective owners. In this manual, the (TM) or (R) mark are not specified.

Caution Markings for Lithium/Ion Battery - The following or similar texts shall be provided on battery pack of equipment or in both the operating and the service instructions.

CAUTION: Danger of explosion if battery is incorrectly replaced. Replace only with the same or equivalent type recommended by the manufacturer. Discard used batteries according to the manufacturer's instructions.

CAUTION: The battery pack used in this device may present a fire or chemical burn hazard if mistreated. Do not disassemble, heat above 100°C (212°F) or incinerate. Dispose of used battery promptly. Keep away from children.

CAUTION: Changing the back up battery.

- Overcharging, short circuiting, reverse charging, multistage or incineration of the cells must be avoided to prevent one or more of the following occurrences; release of toxic materials, release of hydrogen and/or oxygen gas, rise in surface temperature.
- If a cell has leaked or vented, it should be replaced immediately while avoiding to touch it without any protection.

Service and Inspection Precautions

1. Obey precautionary markings and instructions

Labels and stamps on the cabinet, chassis, and components identify are as requiring special precautions. Be sure to observe these precautions, as well as all precautions listed in the operating manual and other associated documents.

2. Use designated parts only

The set's components possess important safety characteristics, such as noncombustibility and the ability to tolerate large voltages. Be sure that replacement parts possess the same safety characteristics as the originals. Also remember that the Δ mark, which appears in circuit diagrams and parts lists, denotes components that have particularly important safety functions; be extra sure to use only the designated components.

3. Always follow the original design when mounting parts and routing wires

The original layout includes various safety features, such as inclusion of insulating materials (tubes and tape) and the mounting of parts above the printer board. In addition, internal wiring has been routed and clamped so as to keep it away from hot or high-voltage parts. When mounting parts or routing wires, therefore, be sure to duplicate the original layout.

4. Inspect after completing service

After servicing, inspect to make sure that all screws, components, and wiring have been returned to their original condition. Also check the area around the repair location to ensure that repair work has caused no damage, and confirm safety.

5. When replacing chip components...

Never reuse components. Also remember that the negative side of tantalum capacitors is easily damaged by heat.

6. When handling flexible print boards...

- The temperature of the soldering-iron tip should be about 270°C.
- Do not apply the tip more than three times to the same pattern.
- Handle patterns with care; never apply force.

Caution: Remember that hard disk drives are easily damaged by vibration. Always handle with care.

ATTENTION AU COMPOSANT AYANT RAPPORT À LA SÉCURITÉ!

LES COMPOSANTS IDENTIFIÉS PAR UNE MARQUE Δ SUR LES DIAGRAMMES SCHÉMATIQUES ET LA LISTE DES PIÈCES SONT CRITIQUES POUR LA SÉCURITÉ DE FONCTIONNEMENT. NE REMPLACER CES COMPOSANTS QUE PAR DES PIÈCES SONY DONT LES NUMÉROS SONT DONNÉS DANS CE MANUEL OU DANS LES SUPPLÉMENTS PUBLIÉS PAR SONY.

Confidential

PCG-V505F/V505T3x/V505W (J)
PCG-V505DC1x/V505DC1Px/V505DH/V505DX/V505DXP (AM)
PCG-V505CP (EU)
PCG-V505MCP/V505MP/V505MLP/V505MSP/V505MTP (AO)

TABLE OF CONTENTS

<u>Section</u>	<u>Title</u>	<u>Page</u>	<u>Section</u>	<u>Title</u>	<u>Page</u>
CHAPTER 1. SPECIFICATIONS		1-1	CHAPTER 5. OTHERS		
		(to 1-1)	5-1. The Barcode Label		5-1
CHAPTER 2. BLOCK DIAGRAM		2-1	5-2. Replacing the CPU		5-2
		(to 2-1)	5-3. CTO Information		5-3
CHAPTER 3. FRAME HARNESS DIAGRAM		3-1			(to 5-3)
		(to 3-1)			
CHAPTER 4. EXPLODED VIEWS AND PARTS LIST					
Palmrest					
P-1		4-2			
Bottom					
B-1		4-3			
Main Board					
M-1		4-4			
LCD					
L-1		4-5			
Accessories					
A-1		4-6			
		(to 4-6)			

History of the changes is shown as the “Revision History” at the end of this data.

変更履歴は、“Revision History”として、本データ末に記載してあります。

Confidential

PCG-V505F/V505T3x/V505W (J)
 PCG-V505DC1x/V505DC1Px/V505DH/V505DX/V505DXP (AM)
 PCG-V505CP (EU)
 PCG-V505MCP/V505MP/V505MLP/V505MSP/V505MTP (AO)

CHAPTER 1. SPECIFICATIONS

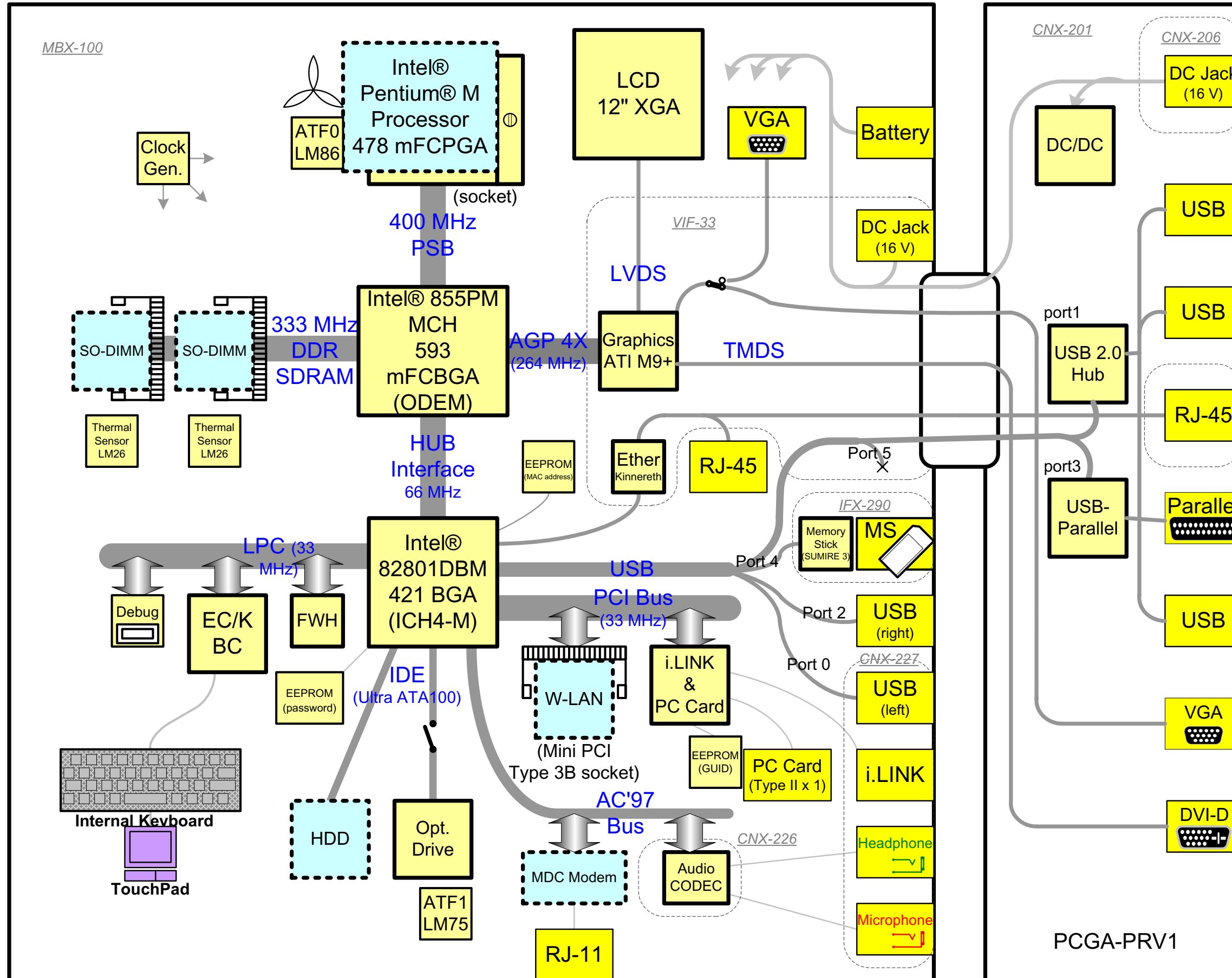
	J		AM			EU	AO				
	PCG-V505F/B	PCG-V505W/P	PCG-V505DH	PCG-V505DX	PCG-V505DXP	PCG-V505CP	PCG-V505MP	PCG-V506MLP	PCG-V505MSP	PCG-V505MTP	PCG-V505MCP
CPU	PM-1.3GHz	PM-1.5GHz	PM-1.4GHz	PM-1.4GHz	PM-1.4GHz	PM-1.6GHz	PM-1.5GHz	PM-1.5GHz	PM-1.5GHz	PM-1.5GHz	PM-1.5GHz
LCD	12.1XGA	12.1XGA	12.1XGA	12.1XGA	12.1XGA	12.1XGA	12.1XGA	12.1XGA	12.1XGA	12.1XGA	12.1XGA
HDD	40GB	60GB	40GB	60GB	60GB	40GB	40GB	40GB	40GB	40GB	40GB
Graphics	M9+X(32MB)	M9+X(32MB)	M9+X(32MB)	M9+X(32MB)	M9+X(32MB)	M9+X(32MB)	M9+X(32MB)	M9+X(32MB)	M9+X(32MB)	M9+X(32MB)	M9+X(32MB)
MEMORY1	256MB × 1	512MB × 1	256MB × 2	256MB × 2	256MB × 2	512MB × 1	512MB × 1	512MB × 1	512MB × 1	512MB × 1	512MB × 1
QUANTITY [STANDARD/MAX]	256MB/2GB	512MB/2GB	512MB/2GB	512MB/2GB	512MB/2GB	512MB/2GB	512MB/2GB	512MB/2GB	512MB/2GB	512MB/2GB	512MB/2GB
OPT-DRIVE	CD-RW/DVD-ROM	CD-RW/DVD-ROM	CD-RW/DVD-ROM	CD-RW/DVD-ROM	CD-RW/DVD-ROM	CD-RW/DVD-ROM	CD-RW/DVD-ROM	CD-RW/DVD-ROM	CD-RW/DVD-ROM	Combo 9.5	Combo 9.5
internal W-LAN	○	○	○	○	○	○	○	○	○	○	○
AC adaptor	PCGA-AC16V6	PCGA-AC16V6	PCGA-AC16V6	PCGA-AC16V6	PCGA-AC16V7	PCGA-AC16V7	PCGA-AC16V7	PCGA-AC16V7	PCGA-AC16V7	PCGA-AC16V6	PCGA-AC16V6
Battery	PCGA-BP2V	PCGA-BP2V	PCGA-BP2V	PCGA-BP2V	PCGA-BP2V	PCGA-BP2V	PCGA-BP2V	PCGA-BP2V	PCGA-BP2V	PCGA-BP2V	PCGA-BP2V
OS	WinXP Home	WinXP Pro	XP Home	XP Home	XP Pro	XP Pro	XP Pro	XP Pro	XP Pro	XP Pro	XP Pro
			△ [MA]	△ [MA]	△ [MA]	△ [MA]	△ [MA]	△ [MA]	△ [MA]	△ [MA]	△ [MA]

- The trademarks of registered trademarks of above table, refer to page 2.
- 本表中の商標・登録商標については、2ページをご参照ください。

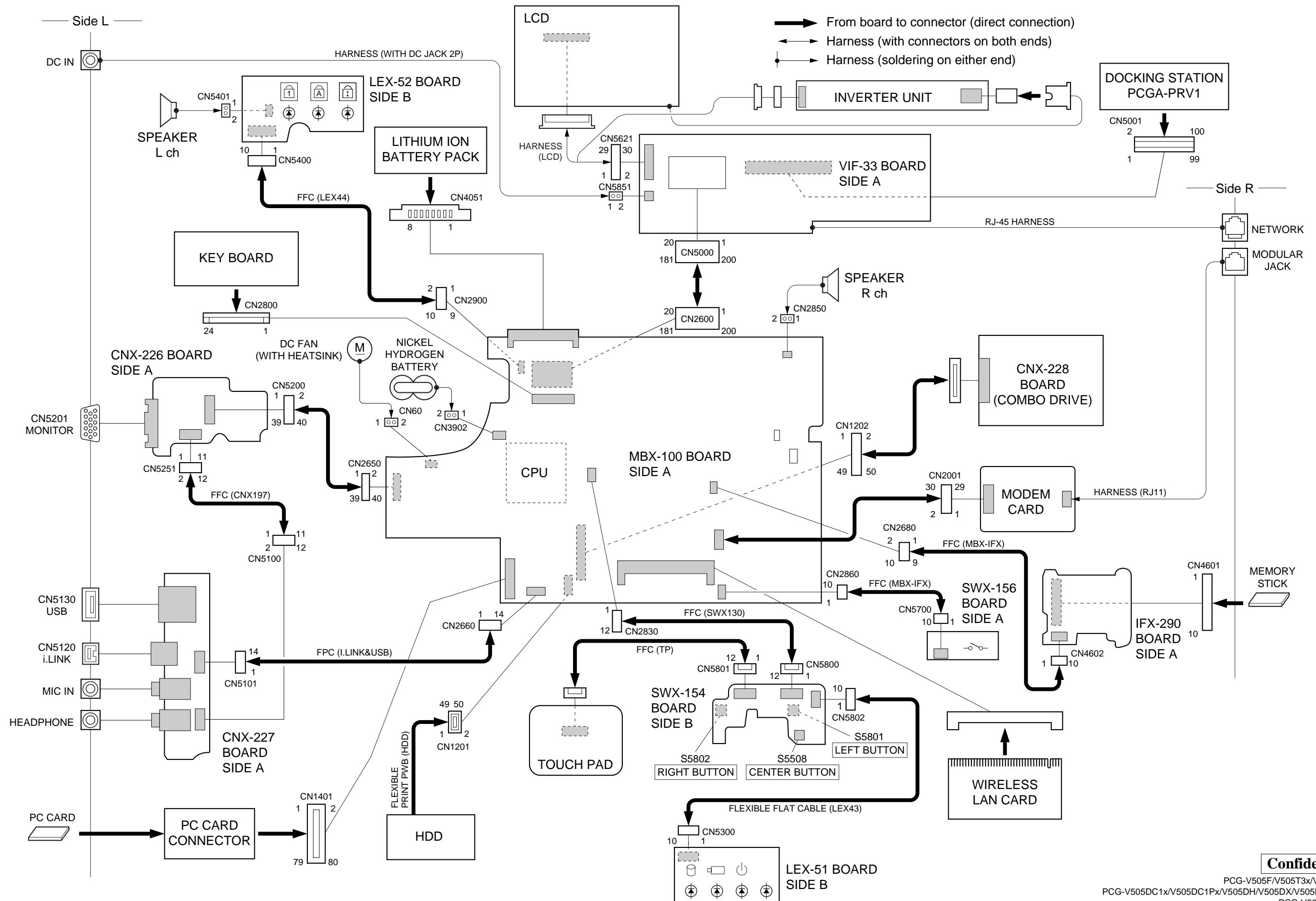
Confidential

PCG-V505F/V505T3x/V505W (J)
PCG-V505DC1x/V505DC1Px/V505DH/V505DX/V505DXP (AM)
PCG-V505CP (EU)
PCG-V505MCP/V505MP/V505MLP/V505MSP/V505MTP (AO)

CHAPTER 2. BLOCK DIAGRAM



CHAPTER 3. FRAME HARNESS DIAGRAM



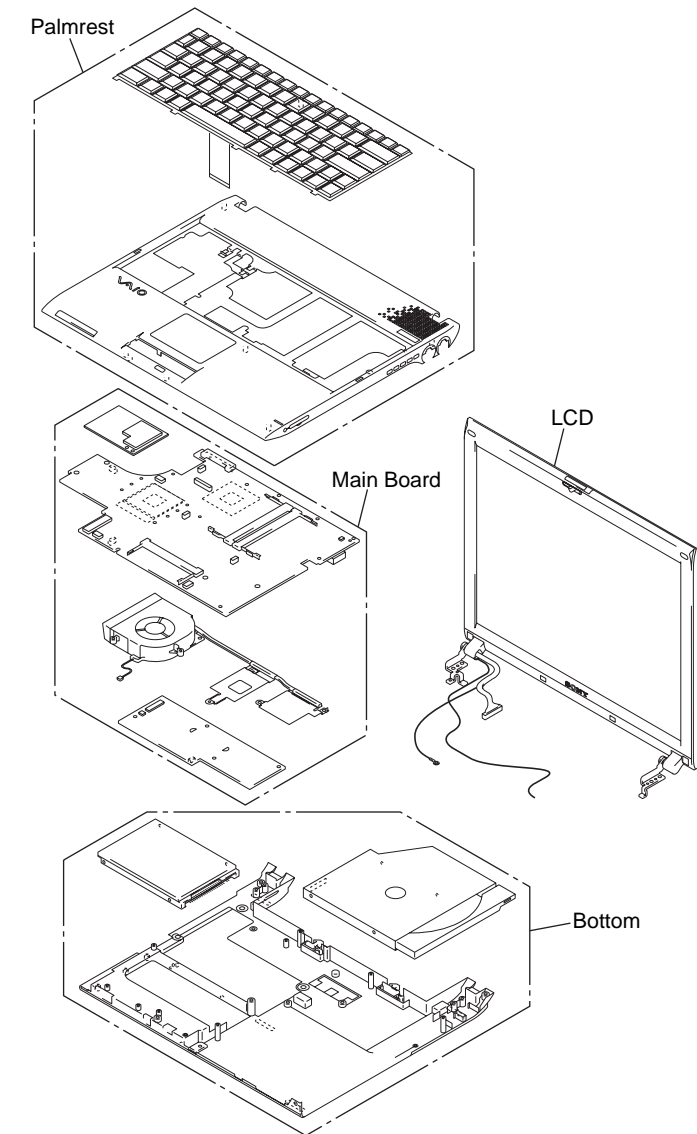
CHAPTER 4.

EXPLODED VIEWS AND PARTS LIST

The parts list is compiled by blocks of a palmrest and bottom etc. The sections of the parts list are different depending on the model. Please refer to list of contents shown in the below.

分解図と部品表は、パームレスト、ボトムなどのブロックごとに分かれています。機種によって部品表のセクションが異なりますので、詳細は右下の一覧表を参照してください。

Section	Page
Palmrest	
P-1	4-2
Bottom	
B-1	4-3
Main Board	
M-1	4-4
LCD	
L-1	4-5
Accessory	
A-1	4-6



NOTE:

- Items marked “*” are not stocked since they are seldom required for routine service. Some delay should be anticipated when ordering these items.
- The mechanical parts with no reference number in the exploded views are not supplied.
- When two or more parts are shown, use the part described first as the main part.
- The parts marked “\$” are the High Value Modules (HVM).
- The parts marked “#” are the parts on which barcode label is attached. For the barcode label, refer to CHAPTER 5.
- The parts marked “&” are the “Customer Replacable Parts (CRP)” that can be replaced by Field Customer Support. Especially the parts with the <&> mark require the special attention to use them. Here fore, check first whether the desired part is one of the targetted parts of the Customer Replacable Parts (CRP), or the non-targetted parts by referring to the exploded view.

【使用上の注意】

- *印の部品は常備在庫しておりません。
- 図面番号のない部品は供給しません。
- 併記部品の場合、上部記載部品をメイン部品として使用してください。
- 部品名称の前に\$印のついた部品は、High Value Module (HVM) です。
- 部品名称の前に#印のついた部品は、バーコードラベル貼付部品です。バーコードラベルについてはCHAPTER 5を参照してください。
- 部品名称の前に&印のついた部品は、お客様窓口などでも交換可能なCustomer Replacable Part (CRP) です。特に<&>のついた部品は、使い分けが必要な部品ですので、分解図でCustomer Replacable Parts 対象部品か、対象外部部品かを必ず御確認ください。

The components identified by mark Δ or dotted line with mark Δ are critical for safety. Replace only with part number specified.

Les composants identifiés par une marque Δ sont critiques pour la sécurité. Ne les remplacer que par une pièce portant le numéro spécifié.

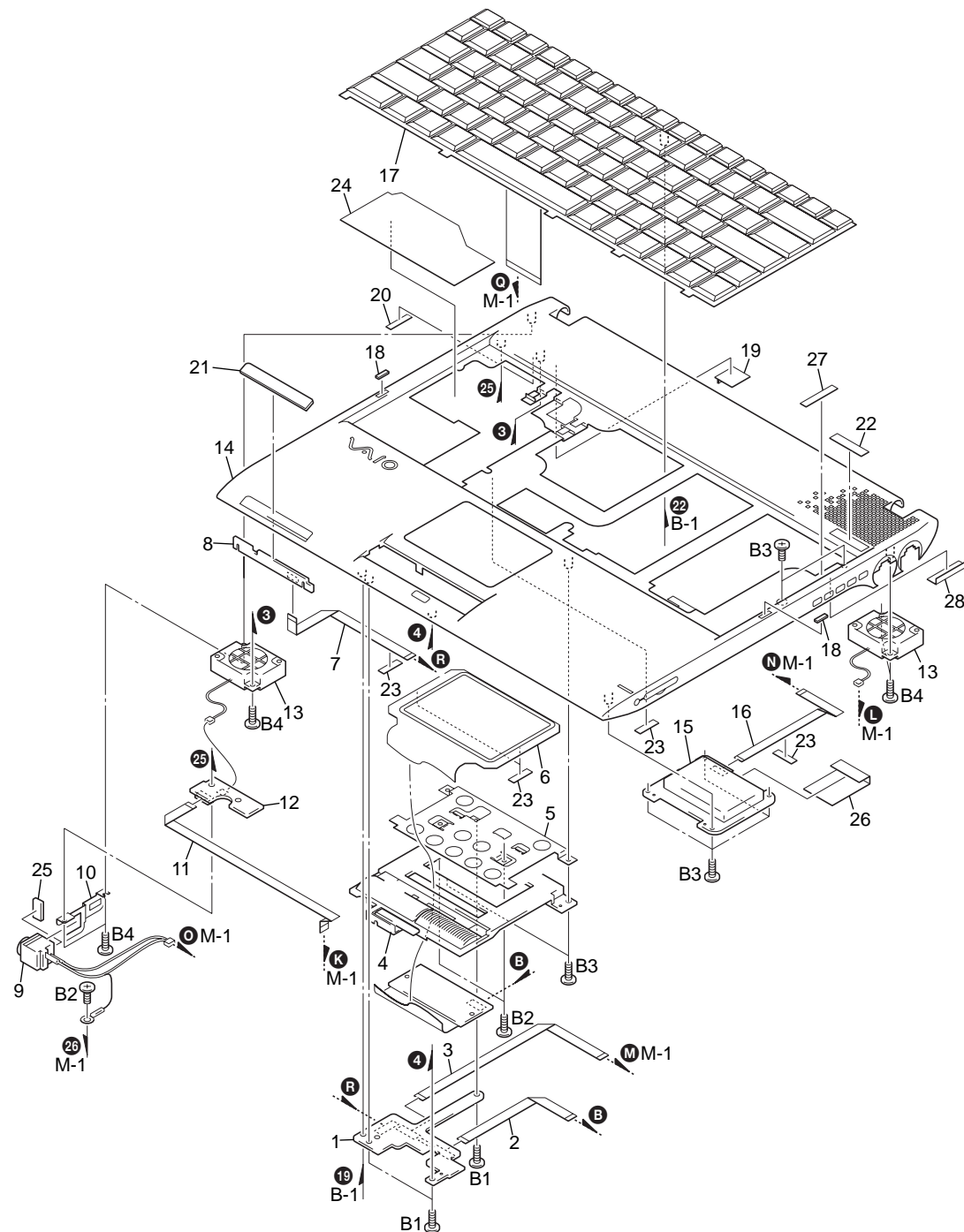
Δ 印の部品、または Δ 印付きの点線で囲まれた部品は、安全性を維持するために重要な部品です。従って交換時は、必ず指定の部品を使用して下さい。

		Palmrest	Bottom	Main Board	LCD	Accessory	
J	V505W/P	P-1	B-1	M-1	L-1	A-1	
	V505F/B	P-1	B-1	M-1	L-1	A-1	
	J-CTO	P-1	B-1	M-1	L-1	A-1	
Δ [MA]	AM	V505DXP	P-1	B-1	M-1	L-1	A-1
Δ [MA]		V505DX	P-1	B-1	M-1	L-1	A-1
Δ [MA]		V505DH	P-1	B-1	M-1	L-1	A-1
Δ [MA]		U-CTO	P-1	B-1	M-1	L-1	A-1
Δ [MA]	EU	V505CP	P-1	B-1	M-1	L-1	A-1
Δ [MA]	AO	V505MP	P-1	B-1	M-1	L-1	A-1
Δ [MA]		V505MLP	P-1	B-1	M-1	L-1	A-1
Δ [MA]		V505MSP	P-1	B-1	M-1	L-1	A-1
Δ [MA]		V505MTP	P-1	B-1	M-1	L-1	A-1
Δ [MA]		V505MCP	P-1	B-1	M-1	L-1	A-1

Confidential

PCG-V505F/V505T3x/V505W (J)
 PCG-V505DC1x/V505DC1Px/V505DH/V505DX/V505DXP (AM)
 PCG-V505CP (EU)
 PCG-V505MCP/V505MP/V505MLP/V505MSP/V505MTP (AO)

P-1. Palmrest



Ref. No.	Part No.	Description
△ [COR] A-8068-611-A	→ 1	A-8068-493-A \$ COMPLETE PWB (SWX-154) (BB) (S)
	2	1-824-996-71 CABLE, FLEXIBLE FLAT (TP)
	3	1-824-996-52 CABLE, FLEXIBLE FLAT (SWX130)
	4	X-4626-275-1 HOLDER (TP) (C) ASSY
	* 5	4-670-552-02 PLATE (TP)
△ [COR] A-8068-609-A	→ 6	1-796-623-14 TOUCH PAD
	7	1-824-996-22 CABLE, FLEXIBLE FLAT (LEX43)
	8	A-8068-429-A \$ COMPLETE PWB (LEX-51) (BB) (S)
	9	1-962-179-12 HARNESS (WITH DC JACK 2P)
	* 10	4-670-547-01 BRACKET (KENSINGTON)
△ [COR] A-8068-610-A	→ 11	1-824-996-32 CABLE, FLEXIBLE FLAT (LEX44)
	12	A-8068-431-A \$ COMPLETE PWB (LEX-52) (BB) (S)
	13	1-477-748-11 LOUD SPEAKER (2.0CM, WITH BOX)
△ [COR] A-8068-607-A	→ 14	X-4625-593-7 PALMREST (F1) ASSY
	15	A-8068-425-A \$ COMPLETE PWB (IFX-290) (BB) (S)
	16	1-860-586-11 PWB, FLEXIBLE PRINT (MBX-IFX)
	18	4-670-846-01 CUSHION (PALM)
	19	4-671-180-01 COVER (LENS KB)
	20	4-672-928-01 CUSHION (LIGHT SHIELDING)
	23	4-673-761-01 TAPE 7X18
	24	4-675-709-01 PLATE KB
	25	4-678-053-02 CUSHION (DC)
	26	4-679-438-01 SHEET (M)
	27	4-679-387-01 TAPE (5X35)
	28	4-678-054-01 SHEET (VENT)
	B1	4-672-836-11 SCREW, M2 SPECIAL HEAD, EG GRIP (M2X4)
	B2	4-672-834-01 SCREW, +B EG GRIP (M2X2.5)
	B3	4-672-834-31 SCREW, +B EG GRIP (M2X5.0)
	B4	4-672-840-01 SCREW, M2 TAPPING, FLAT HEAD (M2X5.0)

Ref. No.	Part No.	Description	Model																	
			V505WIP	V505FB	J	V505T3P*	V505T3*	V505DXP	V505DX	AM	V505DH	V505DC1P*	V505DC1*	EU	V505CP	V505MP	V505MLP	V505MSP	V505MTP	AO
17	1-477-752-12	KEY BOARD UNIT (JP)	●	●	●	●	●	●	●	●	●	●	●	●	●	●	●	●	●	●
△ [MA]	1-477-752-22	KEY BOARD UNIT (US)																		
△ [MA]	1-477-752-32	(UK)...KEY BOARD UNIT (GB)																		
△ [MA]	1-477-752-72	(Italian)...KEY BOARD UNIT (IT)																		
△ [MA]	1-477-891-12	(Spanish)...KEY BOARD UNIT (ES)																		
△ [MA]	1-477-891-41	(Swedish)...KEY BOARD UNIT (SE)																		
△ [MA]	1-477-752-92	KEY BOARD UNIT (KR)																		
△ [MA]	1-477-891-22	KEY BOARD UNIT (TH)																		
△ [MA]	1-477-891-32	KEY BOARD UNIT (TW)																		
21	4-670-554-12	(W-LAN)...COVER, LENS	●	●	●	●	●	●	●	●	●	●	●	●	●	●	●	●	●	●
△ [MA]	4-670-554-02	(No W-LAN)...COVER, LENS																		
22	4-678-472-21	LABEL ID (J)	●																	
	4-678-472-31	LABEL ID (J)		●																
	4-678-472-01	LABEL ID (J)			●															
	4-678-472-11	LABEL ID (J)				●														
△ [MA]	4-679-532-31	LABEL ID (U)					●													
△ [MA]	4-679-532-21	LABEL ID (U)						●												
△ [MA]	4-679-532-41	LABEL ID (U)							●											
△ [MA]	4-679-532-01	LABEL ID (U)								●										
△ [MA]	4-679-532-11	LABEL ID (U)									●									
△ [MA]	4-679-868-01	LABEL ID (E)										●								
△ [MA]	4-679-617-01	LABEL ID (I)												●						
△ [MA]	4-679-617-11	LABEL ID (I)													●					
△ [MA]	4-679-617-31	LABEL ID (I)														●				
△ [MA]	4-679-617-21	LABEL ID (I)															●			
△ [MA]	4-679-647-01	LABEL ID (I)																●		

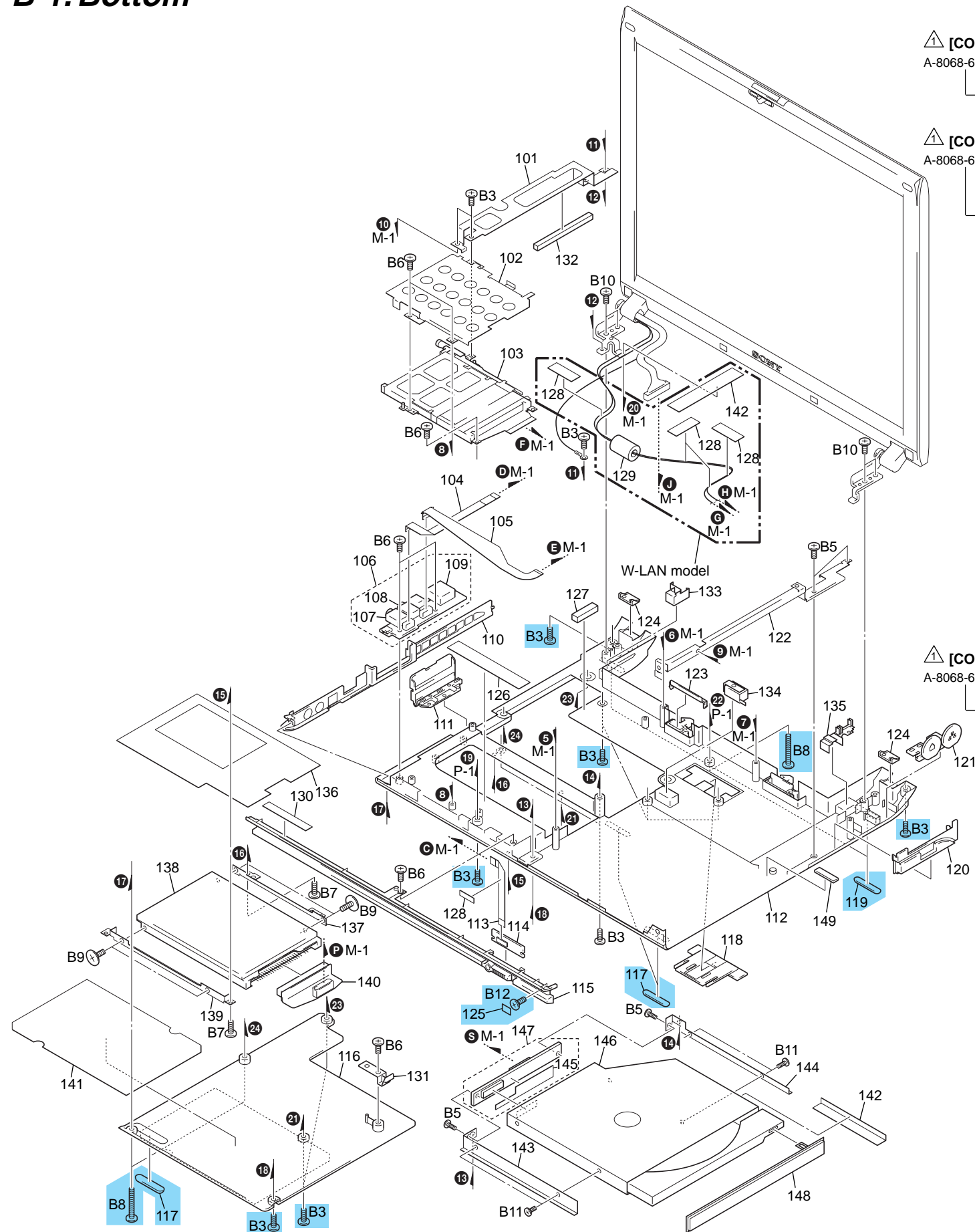
- This parts list contains two different types of parts.
The first type is the parts that are common to all models.
The other type is the parts that are different depending on each model.
- The model that is accompanied by asterisk (*) is the CTO model.

- この部品表は、機種共通の部品と、機種によって使い分けが必要な部品に分かれています。
- 機種名に (*) がつくのはCTOモデルです。

Confidential

PCG-V505F/V505T3x/V505W (J)
 PCG-V505DC1x/V505DC1Px/V505DH/V505DX/V505DXP (AM)
 PCG-V505CP (EU)
 PCG-V505MCP/V505MP/V505MLP/V505MSP/V505MTP (AO)

B-1. Bottom



Ref. No.	Part No.	Description
* 101	4-670-521-02	BRACKET (BOTTOM L)
* 102	4-670-517-03	BRACKET (PC CARD)
103	1-817-276-14	CONNECTOR, PC CARD
104	1-824-996-61	CABLE, FLEXIBLE FLAT (CNX197)
105	1-687-953-11	FPC (I.LINK & USB)
106	A-8068-427-A	\$ COMPLETE PWB (CNX-227) (BB) (S)
107	1-694-760-21	JACK, SMALL TYPE (HEADPHONE)
108	1-694-760-41	JACK, SMALL TYPE (MICROPHONE)
109	1-794-548-21	CONNECTOR, USB (A)
110	4-678-049-02	ESCUTCHEON (SIDE L) (UL)
111	X-4625-584-4	DOOR (VGA) ASSY
112	X-4625-583-4	HOUSING (BOTTOM) (F1) ASSY
113	1-824-996-41	CABLE, FLEXIBLE FLAT (SWX129)
114	A-8068-423-A	\$ COMPLETE PWB (SWX-156) (BB) (S)
116	4-670-526-04	COVER (BOTTOM)
117	4-635-946-41	& FOOT
118	4-670-523-02	DOOR DOCK
119	4-673-102-01	FOOT (R)
120	4-670-519-03	ESCUTCHEON (SIDE R)
121	X-4625-585-3	DOOR (RJ) ASSY
* 122	4-670-522-01	PLATE (OP) (T)
123	4-670-525-01	COVER (BATTERY LOCK)
124	4-670-796-02	STOPPER HINGE
125	4-671-336-03	COVER SEAL 6X4
126	4-671-463-02	TAPE, FPC CABLE (60X10)
127	4-671-506-01	GASKET (FAN)
128	4-662-881-02	CUSHION, KEY BOARD
129	1-400-255-11	(W-LAN)...FERRITE CORE
130	4-673-009-02	SHADE CLOTH (A)
131	4-672-759-01	HOOK (COVER BOTTOM)
132	4-680-578-01	GASKET 5X3
133	4-678-050-01	COVER (L)
134	4-678-052-02	COVER (C)
135	4-678-051-01	COVER (R)
136	4-671-028-01	SHEET (HDD) (T), INSULATING
* 137	4-670-511-01	BRACKET (HDD) (R)
* 139	4-670-510-01	BRACKET (HDD) (F)
140	1-687-015-11	PWB, FLEXIBLE PRINT (HDD)
141	4-671-027-01	SHEET (HDD) (B), INSULATING
142	4-673-292-01	COPPER TAPE FAN
* 143	4-670-503-02	BRACKET (OP) (F)
* 144	4-670-504-02	BRACKET (OP) (R)
145	4-671-026-01	SHEET (OP), INSULATING
146	1-796-626-12	COMBO DRIVE (UJDA745, 9.5MM)
147	A-8068-441-A	\$ # COMPLETE PWB (CNX-228) (BB) (S)
148	X-4625-590-3	BEZEL (OP) (M) ASSY
149	4-680-812-01	CUSHION (OPT)
B3	4-672-834-31	<&> SCREW, +B EG GRIP (M2X5.0)
B5	4-672-834-11	SCREW, +B EG GRIP (M2X3.0)
B6	4-672-834-21	SCREW, +B EG GRIP (M2X3.5)
B7	4-672-834-51	SCREW, +B EG GRIP (M2X4)
B8	4-672-834-41	<&> SCREW, +B EG GRIP (M2X13)
B9	4-672-839-01	HEAD, M3 FLAT (M3X4)
B10	4-672-835-01	SCREW, M2.6 +B EG GRIP (M2.6X5)
B11	4-671-538-01	SCREW (M2X2), SPECIAL HEAD
B12	4-671-539-01	& M2 +P EG GRIP (M2X4)

Ref. No.	Part No.	Description	J		AM		EU		AO					
			V505W/P	V505F/B	V505T3P*	V505DXP	V505DX	V505DH	V505DC1P*	V505DCP	V505MP	V505MLP	V505MSP	V505MTP
115	X-4626-274-1	(W-LAN)...ESCUTCHEON (F) (W-LAN) (UL) ASSY	●	●	●	●	●	●	●	●	●	●	●	●
115	X-4626-273-1	(No W-LAN)...ESCUTCHEON (F) (W-LESS) (UL) ASSY	●	●	●	●	●	●	●	●	●	●	●	●
138	A-8117-059-A	\$ # ASSY HDD 40GB (H,40) (S)	●	●	●	●	●	●	●	●	●	●	●	●
	A-8117-585-A	\$ # ASSY HDD 60GB (H,40) (S)	●	●	●	●	●	●	●	●	●	●	●	●
	A-8067-943-A	\$ # ASSY HDD 80GB (I,40) (S)	●	●	●	●	●	●	●	●	●	●	●	●

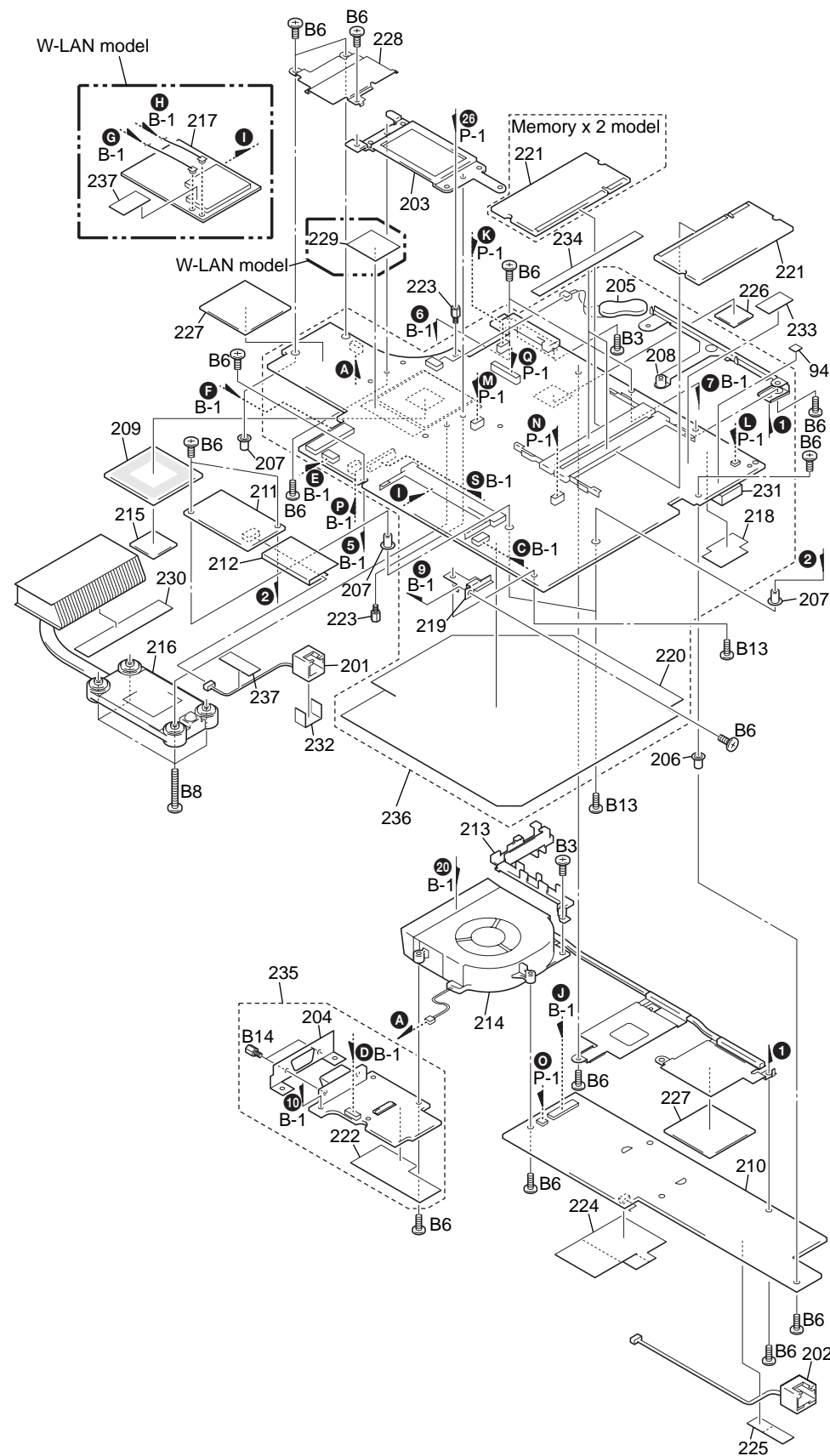
- This parts list contains two different types of parts. The first type is the parts that are common to all models. The other type is the parts that are different depending on each model.
- The model that is accompanied by asterisk (*) is the CTO model.

- この部品表は、機種共通の部品と、機種によって使い分けが必要な部品に分かれています。
- 機種名に (*) がつくのはCTOモデルです。

Confidential

PCG-V505F/V505T3x/V505W (J)
 PCG-V505DC1x/V505DC1Px/V505DH/V505DX/V505DXP (AM)
 PCG-V505CP (EU)
 PCG-V505MCP/V505MP/V505MLP/V505MSP/V505MTP (AO)

M-1.Main Board



Ref. No.	Part No.	Description
201	1-962-036-11	HARNESS (RJ11)
202	1-962-095-11	HARNESS,RJ-45
* 203	4-670-532-02	BRACKET (CPU)
* 204	4-670-563-01	BRACKET (VGA)
205	1-756-038-21	BATTERY, NICKEL HYDROGEN
206	4-670-168-01	STAND OFF M2X6
207	4-655-326-01	OFF, STAND
* 208	X-4625-591-2	BRACKET (MBX) ASSY
210	A-8068-439-A	COMPLETE PWB (VIF-33) (BB) (S)
211	1-761-606-14	CARD, MODEM
212	4-671-515-01	FILM (MODEM)
213	4-670-524-01	BRACKET WIRE
214	1-763-974-14	FAN, D.C
215	4-668-785-01	THERMAL SHEET CPU
216	4-670-509-02	HEAT SINK UNIT
218	4-679-974-01	SHEET (278VIF), INSULATING
* 219	4-670-534-02	BRACKET MBX FR
220	4-671-188-01	SHEET (MBX), INSULATING
222	4-671-184-01	SHEET (FAN), INSULATING
223	4-651-989-51	SPACER (MBX)
224	4-671-460-02	TAPE, ETHER CABLE
225	4-671-462-01	TAPE, ETHER CABLE 2 (9X34)
226	4-670-528-01	SHEET (MCH), THERMAL
227	4-670-529-01	SHEET (GFX), THERMAL
* 228	4-670-533-04	HEAT SINK (POWER)
229	4-673-025-01	(W-LAN)...COVER FERRITE CORE
230	4-673-026-01	FILM (FAN)
231	1-793-365-21	CONNECTOR, USB (A)
232	4-673-302-01	ADHESIVE TAPE (RJ)
233	4-673-762-01	CUSHION T4.5
234	4-673-758-01	SPACER T2 (DIM)
235	A-8068-437-A	COMPLETE PWB (CNX-226) (BB) (S)
236	A-8068-435-A	COMPLETE PWB (MBX-100) (BB) (S)
237	4-662-881-02	CUSHION, KEY BOARD
B3	4-672-834-31	SCREW, +B EG GRIP (M2X5.0)
B6	4-672-834-21	SCREW, +B EG GRIP (M2X3.5)
B13	4-672-836-01	SCREW, M2 SPECIAL HEAD, EG GRIP (M2X3)
B14	4-635-966-01	SCREW (HEX)

[COR] A-8068-614-A

[COR] A-8068-612-A

Ref. No.	Part No.	Description	Model Selection																			
			V505W/P	J	AM	EU	AO	V505F/B	V505T3P+	V505T3#	V505DXP	V505DX	V505DH	V505DC1P*	V505DC1*	V505CP	V505MP	V505MLP	V505MSP	V505MTP	V505MCP	
209	6-600-304-01	(PM-1.5GHz)...IC RH80535GC0211MSL6F9	●	●	●	●	●	●	●	●	●	●	●	●	●	●	●	●	●	●	●	●
	6-600-322-01	(PM-1.3GHz)...IC RH80535GC0131MSL6N4	●	●	●	●	●	●	●	●	●	●	●	●	●	●	●	●	●	●	●	●
	6-600-301-01	(PM-1.7GHz)...IC RH80535GC0291MSL6N5	●	●	●	●	●	●	●	●	●	●	●	●	●	●	●	●	●	●	●	●
	6-600-302-01	(PM-1.6GHz)...IC RH80535GC0251MSL6FA	●	●	●	●	●	●	●	●	●	●	●	●	●	●	●	●	●	●	●	●
	6-600-303-01	(PM-1.4GHz)...IC RH80535GC0171MSL6F8	●	●	●	●	●	●	●	●	●	●	●	●	●	●	●	●	●	●	●	●
217	1-761-784-11	CARD, WIRELESS LAN	●	●	●	●	●	●	●	●	●	●	●	●	●	●	●	●	●	●	●	●
	1-761-660-23	CARD, WIRELESS LAN (CLX11B 14CH)	●	●	●	●	●	●	●	●	●	●	●	●	●	●	●	●	●	●	●	●
	1-761-660-31	CARD, WIRELESS LAN (CLX11B 11CH)	●	●	●	●	●	●	●	●	●	●	●	●	●	●	●	●	●	●	●	●
	1-761-660-13	CARD, WIRELESS LAN (CLX11B 11CH)	●	●	●	●	●	●	●	●	●	●	●	●	●	●	●	●	●	●	●	●
221	6-705-094-01	(256MB)...IC M470L3224FTO-CB3	●	●	●	●	●	●	●	●	●	●	●	●	●	●	●	●	●	●	●	●
	A-8068-348-A	(512MB)...COMPLETE PWB MM-10A	●	●	●	●	●	●	●	●	●	●	●	●	●	●	●	●	●	●	●	●
	6-705-343-01	(1024MB)...IC EBD11UD8ABDA-6B	●	●	●	●	●	●	●	●	●	●	●	●	●	●	●	●	●	●	●	●

[MA] [MA]

- This parts list contains two different types of parts. The first type is the parts that are common to all models. The other type is the parts that are different depending on each model.
- The model that is accompanied by asterisk (*) is the CTO model.

- この部品表は、機種共通の部品と、機種によって使い分けが必要な部品に分かれています。
- 機種名に (*) がつくのはCTOモデルです。

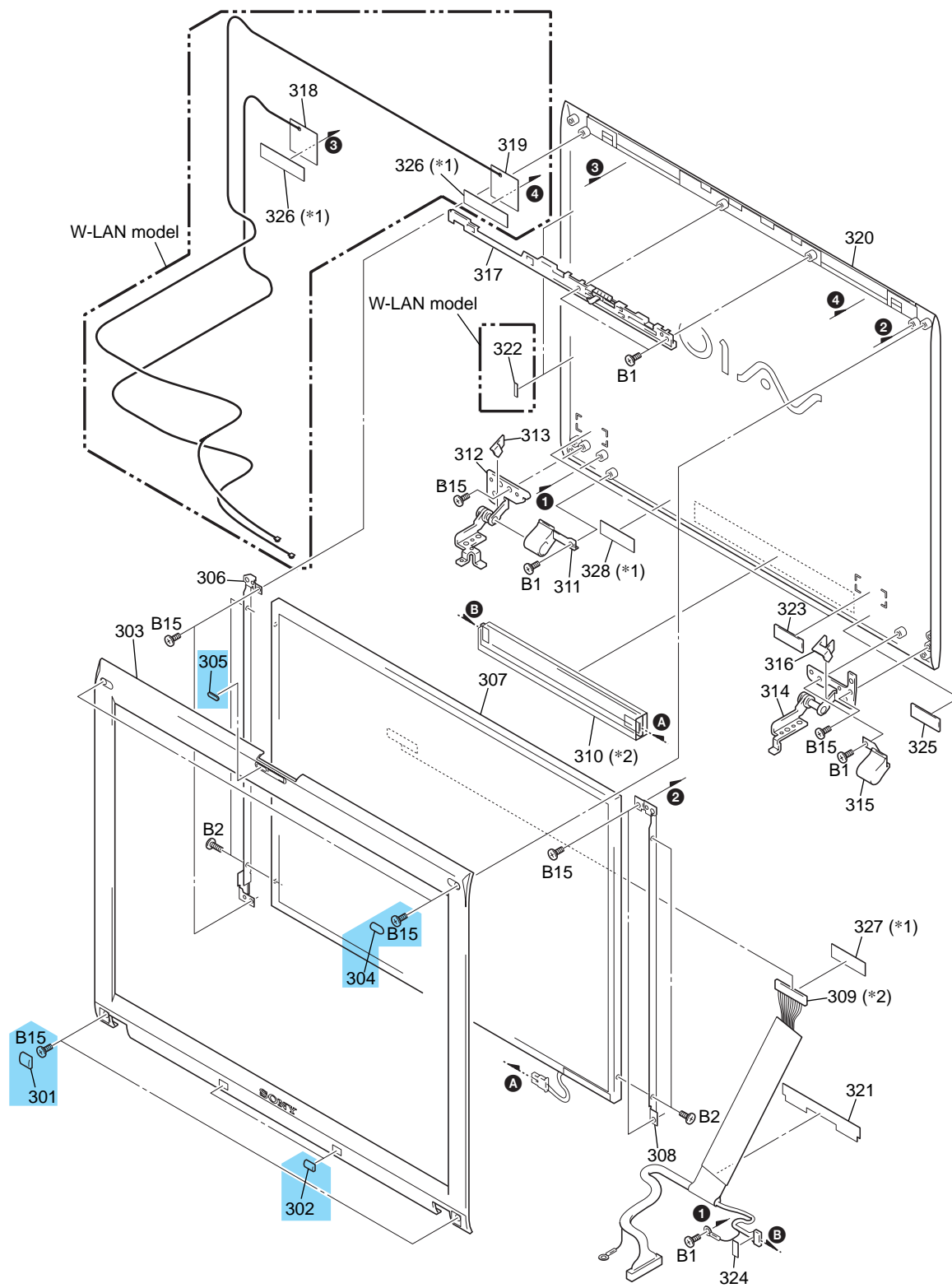
* When change the CPU (ref. 209), refer to "Replacing the CPU" in CHAPTER 5.
 * CPU (Ref. 209) を交換する際には、CHAPTER 5の「Replacing the CPU」をご参照下さい。

Confidential

PCG-V505F/V505T3x/V505W (J)
 PCG-V505DC1x/V505DC1Px/V505DH/V505DX/V505DXP (AM)
 PCG-V505CP (EU)
 PCG-V505MCP/V505MP/V505MLP/V505MSP/V505MTP (AO)

L-1. LCD 12.1-inch XGA

– Made by TO –

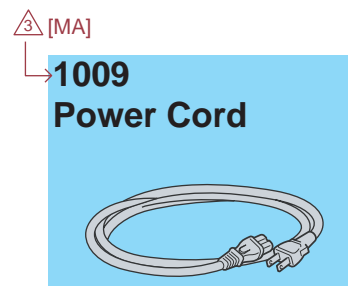
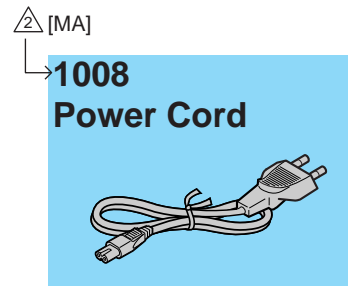
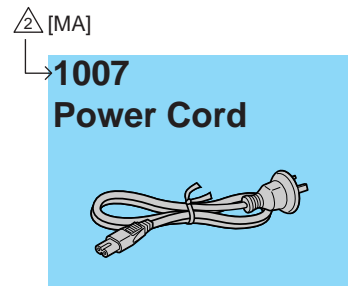
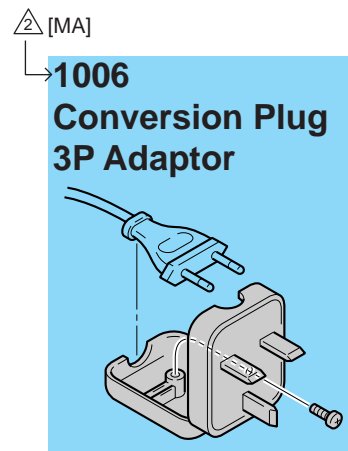
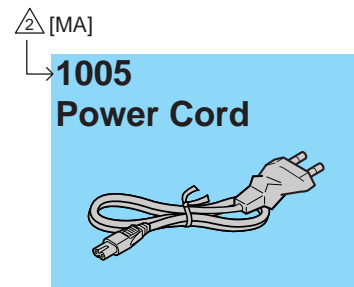
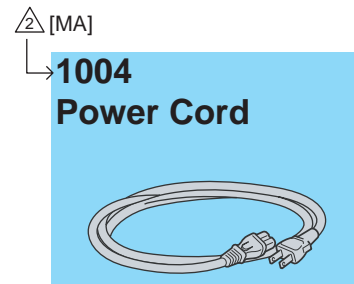
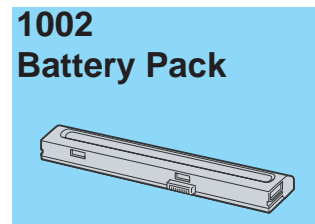


Ref. No.	Part No.	Description
301	4-670-474-01	& CUSHION (L)
302	4-670-476-01	& CUSHION (CENTER)
303	X-4625-579-5	HOUSING (BEZEL) ASSY
304	4-670-473-01	& CUSHION (U)
305	4-670-475-01	& CUSHION (LATCH)
* 306	4-670-481-02	BRACKET (LCD L) △ [COR]
307	A-8118-045-A	LCD (12.1) (T) (S) ← A-8118-175-A LCD UNIT (12.1 TFT XGA) (S)
* 308	4-670-482-02	BRACKET (LCD R)
309	1-961-998-31	HARNESS, LCD (*2)
310	1-477-753-11	INVERTER UNIT (*2)
311	4-670-477-02	COVER (L), HINGE
312	4-670-483-01	TILT UNIT (L)
313	4-670-479-01	CAP (L), HINGE
314	4-670-484-02	TILT UNIT (R)
315	4-670-478-02	COVER (R), HINGE
316	4-670-480-03	CAP (R), HINGE
317	X-4625-580-3	LATCH ASSY
318	1-754-272-12	(W-LAN)...ANTENA, FILM (FOR LEFT)
319	1-754-272-22	(W-LAN)...ANTENA, FILM (FOR RIGHT)
320	A-8117-843-A	HOUSING DISPLAY ASSY (BADGE) (S)
321	4-673-031-01	COPPER TAPE (LCD)
322	4-670-485-01	(W-LAN)...CUSHION (ANT)
323	4-673-032-01	CUSHION (GAP)
324	4-662-881-02	CUSHION, KEY BOARD
325	4-673-088-01	TAPE, HARNESS (INV)
326	-	(W-LAN)...FILAMENT TAPE (W12X50) (*1)
327	-	FILAMENT TAPE (W12X30) (*1)
328	-	FILAMENT TAPE (W12X40) (*1)
B1	4-672-836-11	SCREW, M2 SPECIAL HEAD, EG GRIP (M2X4)
B2	4-672-834-01	SCREW, +B EG GRIP (M2X2.5)
B15	4-671-538-11	<&> SCREW (M2X4), SPECIAL HEAD

*1 Use the FILAMENT TAPE.
 *2 When you exchange Ref. 309 or Ref. 310, please exchange both together.

*1 Use the FILAMENT TAPE.
 *2 Ref. 309または310の部品を交換するときは、両方の部品を同時に交換してください。

A-1. Accessories



Ref. No. Part No. Description
 △1001 1-477-749-51 \$ & ADAPTOR, AC

Ref. No.	Part No.	Description	J			AM		EU		AO						
			V505W/P	V505F/B	V505T3P*	V505DXP	V505DX	V505DH	V505DC1P*	V505DC1*	V505CP	V505MP	V505MLP	V505MSP	V505MTP	V505MCP
△ [MA]	1002	A-8114-136-A \$ & BP2V (J) ASSY (S)	●	●	●											
△ [MA]		A-8114-137-A \$ & BP2V (U) ASSY (S)				●	●	●	●							
△ [MA]		A-8114-139-A \$ & BP4V (U) ASSY (S)								●	●					
△ [MA]		1-756-328-22 \$ & BATTERY PACK, LITHIUM ION								●	●	●	●	●	●	●
! [MA]	1003	1-790-732-32 & CORD, POWER	●	●	●											
△ [MA]	1004	1-757-562-21 & CORD, POWER				●	●	●	●							
△ [MA]	1005	1-575-131-61 & CORD, POWER								●	●					
△ [MA]	1006	1-770-019-11 & ADAPTOR, CONVERSION PLUG 3P								●	●					
△ [MA]	1007	1-555-074-31 & CORD, POWER								●	●					
△ [MA]	1008	1-823-947-32 & POWER-SUPPLY CORD										●				
△ [MA]	1009	1-782-476-22 & CORD, POWER											●			
△ [MA]	-	1-816-429-12 & (UK)...PHONE, PLUG (GB)								●						
△ [MA]	-	1-816-429-72 & (Italian)...PHONE, PLUG (IT)								●						
△ [MA]	-	4-680-103-01 & Instruction Manual (XP)	●	●	●	●										
△ [MA]	-	4-680-143-11 & Instruction Manual (XP)									●					
△ [MA]	-	4-680-143-21 & Instruction Manual (XP)										●				
△ [MA]	-	4-680-143-41 & Instruction Manual (XP)											●			
△ [MA]	-	4-680-144-31 & Instruction Manual (XP)												●		
△ [MA]	-	4-680-105-01 & QUICK START				●	●	●	●							
△ [MA]	-	4-679-555-11 & (UK,Swedish)...HW SPECS									●					
△ [MA]	-	4-679-555-21 & (German,Swiss)...HW SPECS									●					
△ [MA]	-	4-679-555-31 & (French,Swiss)...HW SPECS									●					
△ [MA]	-	4-679-555-41 & (Italian,Swiss)...HW SPECS									●					
△ [MA]	-	4-679-555-51 & (Spanish)...HW SPECS									●					
△ [MA]	-	4-679-555-61 & (UK)...HW SPECS									●					

△ [MA] △ [MA] △ [MA] △ [MA] △ [MA] △ [MA] △ [MA] △ [MA] △ [MA] △ [MA] △ [MA] △ [MA] △ [MA] △ [MA]

- This parts list contains two different types of parts.
 The first type is the parts that are common to all models.
 The other type is the parts that are different depending on each model.
- The model that is accompanied by asterisk (*) is the CTO model.

- この部品表は、機種共通の部品と、機種によって使い分けが必要な部品に分かれています。
- 機種名に(*)がつくのはCTOモデルです。

Confidential

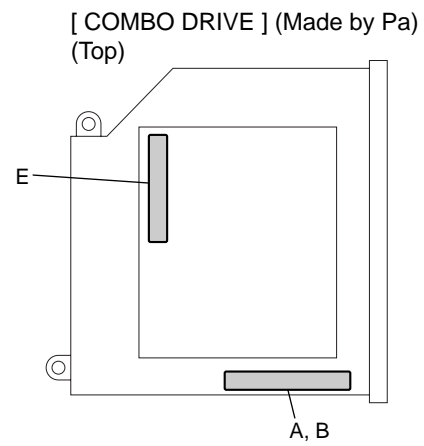
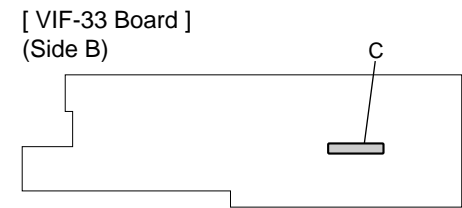
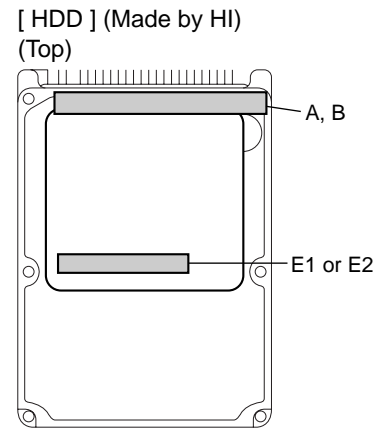
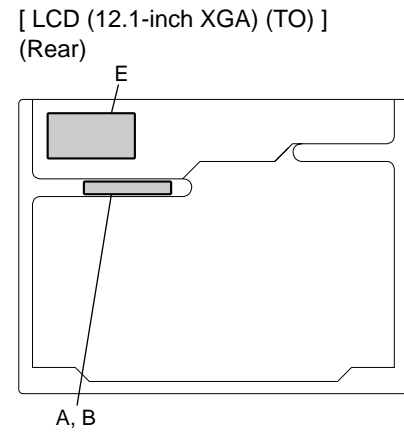
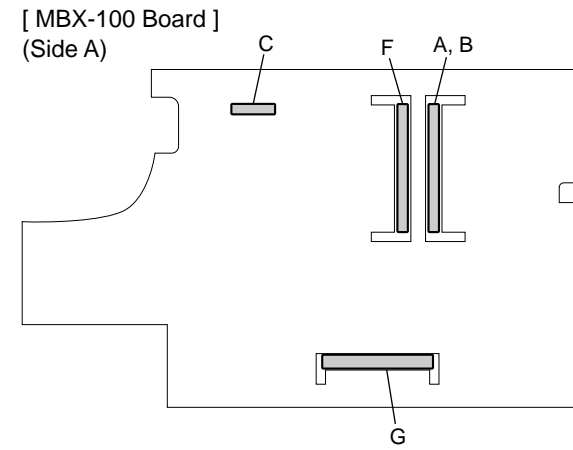
PCG-V505F/V505T3x/V505W (J)
 PCG-V505DC1x/V505DC1Px/V505DH/V505DX/V505DXP (AM)
 PCG-V505CP (EU)
 PCG-V505MCP/V505MP/V505MLP/V505MSP/V505MTP (AO)

CHAPTER 5.

OTHER

5-1. The Barcode Label

The hatched portion of the barcode is used as the repair data.
 バーコードラベルの網掛け部は、修理データとして使用いたします。



- A : Part No.
- B : Serial No.
- C : Revision No.
- D : Product Code
- E : Maker Barcode
- F : Global User ID (iLink)
- G : Mac Address
- : Barcode

Confidential

PCG-V505F/V505T3x/V505W (J)
 PCG-V505DC1x/V505DC1Px/V505DH/V505DX/V505DXP (AM)
 PCG-V505CP (EU)
 PCG-V505MCP/V505MP/V505MLP/V505MSP/V505MTP (AO)

5-2. Replacing the CPU

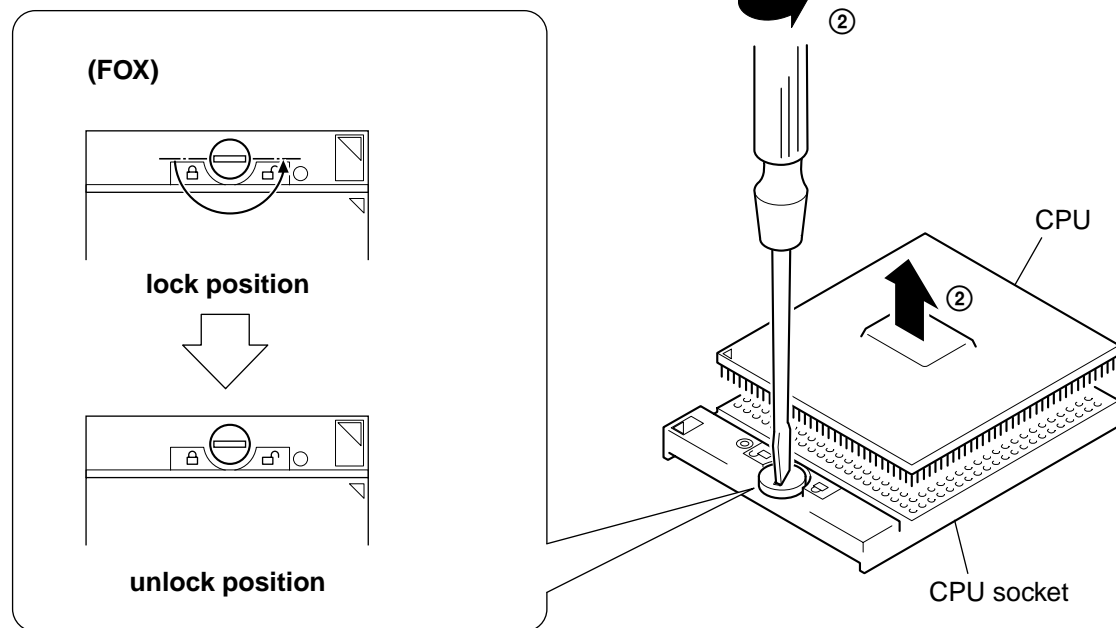
Note: We have two kinds of CPU for this set, and either of them is used.

Two kinds of CPU have differences in the lock position and the unlock position.

1. Socket configuration 1

1. How to remove the CPU

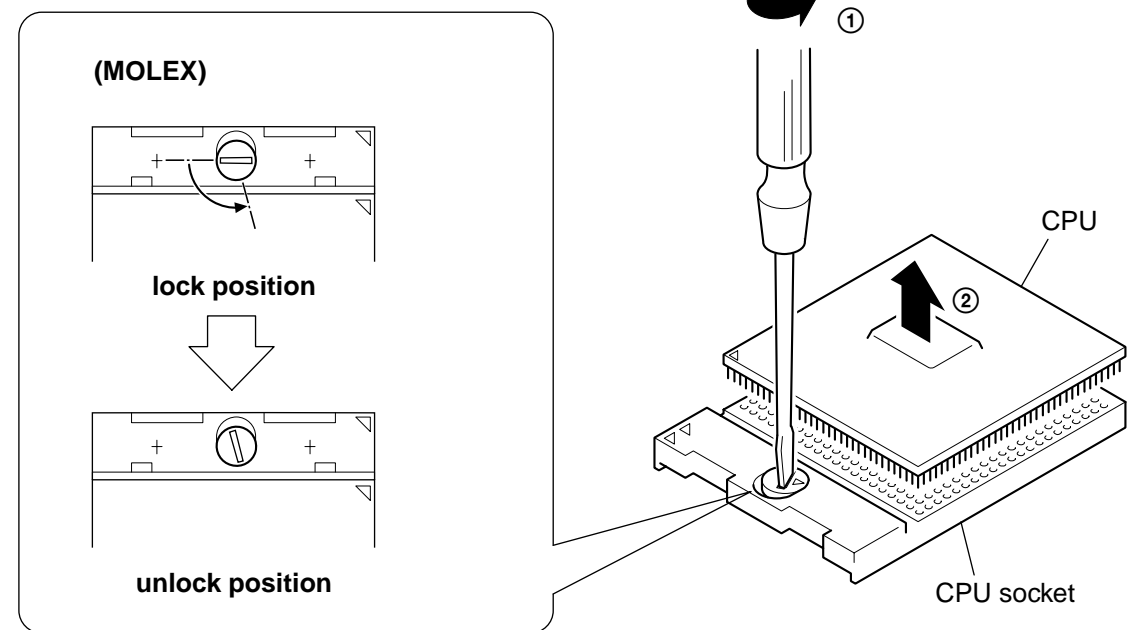
- ① Rotate the lock with a flat-blade screwdriver toward the unlock position shown in the figure.
- ② Remove up the CPU.



2. Socket configuration 2

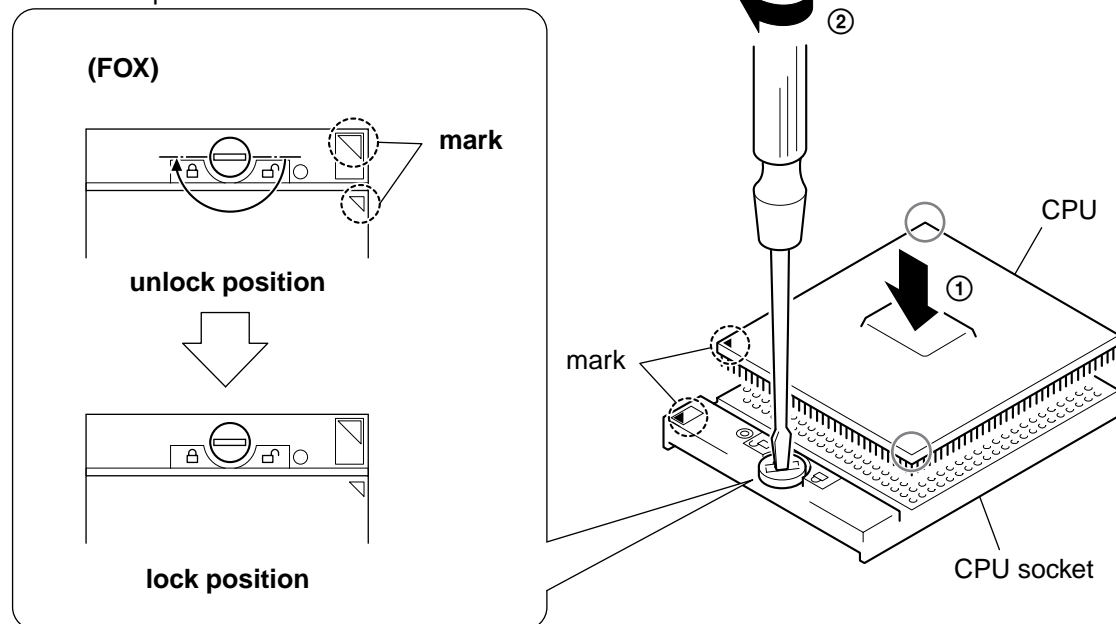
1. How to remove the CPU

- ① Rotate the lock with a flat-blade screwdriver toward the unlock position shown in the figure.
- ② Remove up the CPU.



2. How to install the CPU

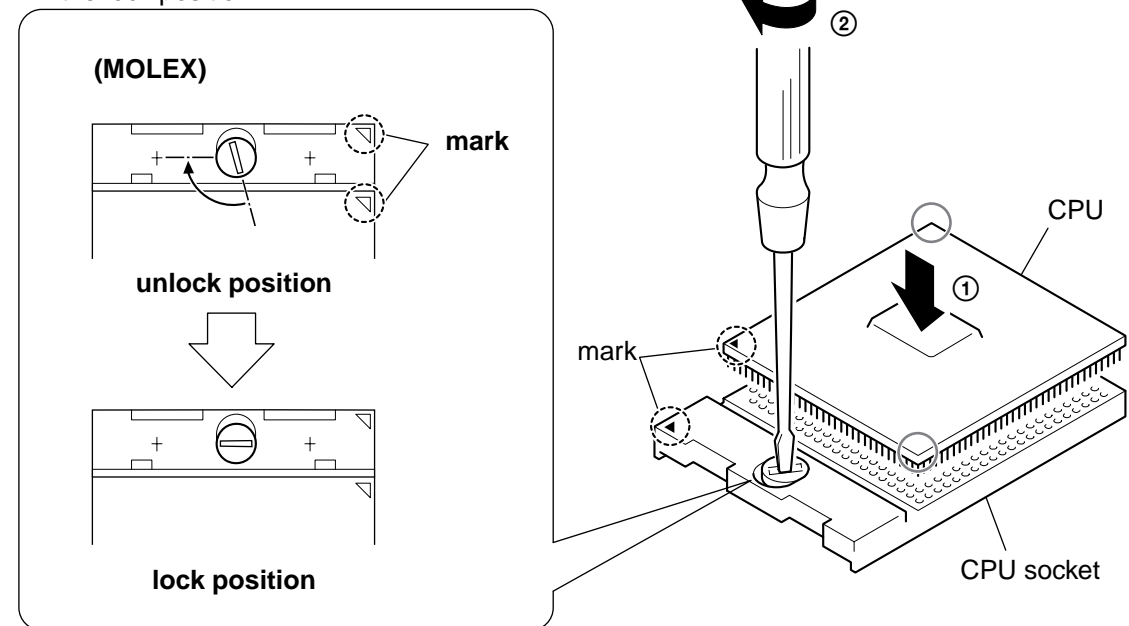
- ① Position the mark on the CPU to the mark on the CPU socket and put in all pins to the holes on the CPU socket.
- ② Pressing two corners marked with ○ in the figure, rotate the lock with a flat-blade screwdriver toward the lock position.



Note: Lock the CPU properly, or operation becomes unstable.

2. How to install the CPU

- ① Position the mark on the CPU to the mark on the CPU socket and put in all pins to the holes on the CPU socket.
- ② Pressing two corners marked with ○ in the figure, rotate the lock with a flat-blade screwdriver toward the lock position.



Note: Lock the CPU properly, or operation becomes unstable.

Confidential

PCG-V505F/V505T3x/V505W (J)
 PCG-V505DC1x/V505DC1Px/V505DH/V505DX/V505DXP (AM)
 PCG-V505CP (EU)
 PCG-V505MCP/V505MP/V505MLP/V505MSP/V505MTP (AO)

5-3. CTO Information

Model name:PCG-V505T3/P (Japanese Area)
 Model number:PCG-691N
 OS:Windows XP Pro
 Ver.1.0

CPU	P-M 1.7GHz RH80535GC0291MSL6N5 6-600-301-01	P-M 1.5GHz RH80535GC0211MSL6F9 6-600-304-01		
HDD	80 GB ASSY HDD 80GB (I,40) (S) A-8067-943-A	60 GB ASSY HDD 60GB (H,40) (S) A-8117-585-A	40GB ASSY HDD 40GB (H,40) (S) A-8117-059-A	
LCD	12.1 XGA LCD UNIT (12.1 TFT XGA) (S) A-8118-175-A			
Memory	2GB(1GBx2) EBD11UD8ABDA-6B 6-705-343-01	1GB(1GBx1) EBD11UD8ABDA-6B 6-705-343-01	512 MB(512MBx1) COMPLETE PWB MM-10A A-8068-348-A	256MB(256MBx1) M470L3224FT0-CB3 6-705-094-01
Opt.Drive	9.5mm Combo (*8) COMBO DRIVE (UJDA745,9.5MM) / COMBO DRIVE (UJDA755,9.5MM) 1-796-626-12 / 1-796-822-11			
W-Lan	MiniPCI CARD, WIRELESS LAN 1-761-784-11			
Battery	BP2V BP2V (J) ASSY (S) A-8114-136-A			
Office	Office Personal 2003		None	
LABEL ID	V505T3/P LABEL ID(J) 4-678-472-01			

Model name:PCG-V505T3 (Japanese Area)
 Model number:PCG-691N
 OS:Windows XP Home
 Ver.1.0

CPU	P-M 1.7GHz RH80535GC0291MSL6N5 6-600-301-01	P-M 1.5GHz RH80535GC0211MSL6F9 6-600-304-01		
HDD	80 GB ASSY HDD 80GB (I,40) (S) A-8067-943-A	60 GB ASSY HDD 60GB (H,40) (S) A-8117-585-A	40GB ASSY HDD 40GB (H,40) (S) A-8117-059-A	
LCD	12.1 XGA LCD UNIT (12.1 TFT XGA) (S) A-8118-175-A			
Memory	2GB(1GBx2) EBD11UD8ABDA-6B 6-705-343-01	1GB(1GBx1) EBD11UD8ABDA-6B 6-705-343-01	512 MB(512MBx1) COMPLETE PWB MM-10A A-8068-348-A	256MB(256MBx1) M470L3224FT0-CB3 6-705-094-01
Opt.Drive	9.5mm Combo (*8) COMBO DRIVE (UJDA745,9.5MM) / COMBO DRIVE (UJDA755,9.5MM) 1-796-626-12 / 1-796-822-11			
W-Lan	MiniPCI CARD, WIRELESS LAN(CLX11B 14CH) 1-761-660-23			
Battery	BP2V BP2V (J) ASSY (S) A-8114-136-A			
Office	Office Personal 2003		None	
LABEL ID	V505T3 LABEL ID(J) 4-678-472-11			

[MA]

Model name:PCG-V505DC1P (American Area)
 Model number:PCG-691L(With W-LAN),692L(No W-LAN)
 OS:Windows XP Pro
 Ver.1.0

CPU	P-M 1.7GHz RH80535GC0291MSL6N5 6-600-301-01	P-M 1.6GHz RH80535GC0251MSL6FA 6-600-302-01	P-M 1.4GHz RH80535GC0171MSL6F8 6-600-303-01		
HDD	80 GB ASSY HDD 80GB (I,40) (S) A-8067-943-A	60 GB ASSY HDD 60GB (H,40) (S) A-8117-585-A	40GB ASSY HDD 40GB (H,40) (S) A-8117-059-A		
LCD	12.1 XGA LCD UNIT (12.1 TFT XGA) (S) A-8118-175-A				
Memory	2GB(1GBx2) EBD11UD8ABDA-6B 6-705-343-01	1GB(512MBx2) COMPLETE PWB MM-10A A-8068-348-A	512 MB(512MBx1) COMPLETE PWB MM-10A A-8068-348-A	512 MB(256MBx2) M470L3224FT0-CB3 6-705-094-01	256MB(256MBx1) M470L3224FT0-CB3 6-705-094-01
Opt.Drive	9.5mm Combo (*8) COMBO DRIVE (UJDA745,9.5MM) / COMBO DRIVE (UJDA755,9.5MM) 1-796-626-12 / 1-796-822-11				
W-Lan	MiniPCI CARD, WIRELESS LAN 1-761-784-11		None		
Battery	BP4V BP4V (U) ASSY (S) A-8114-139-A		BP2V BP2V (U) ASSY (S) A-8114-137-A		
Office	Office Personal 2003		Office XP SBE	None	
LABEL ID	V505DC1P LABEL ID (U) 4-679-532-01				

[MA]

Model name:PCG-V505DC1 (American Area)
 Model number:PCG-691L(With W-LAN),692L(No W-LAN)
 OS:Windows XP Home
 Ver.1.0

CPU	P-M 1.7GHz RH80535GC0291MSL6N5 6-600-301-01	P-M 1.6GHz RH80535GC0251MSL6FA 6-600-302-01	P-M 1.4GHz RH80535GC0171MSL6F8 6-600-303-01		
HDD	80 GB ASSY HDD 80GB (I,40) (S) A-8067-943-A	60 GB ASSY HDD 60GB (H,40) (S) A-8117-585-A	40GB ASSY HDD 40GB (H,40) (S) A-8117-059-A		
LCD	12.1 XGA LCD UNIT (12.1 TFT XGA) (S) A-8118-175-A				
Memory	2GB(1GBx2) EBD11UD8ABDA-6B 6-705-343-01	1GB(512MBx2) COMPLETE PWB MM-10A A-8068-348-A	512 MB(512MBx1) COMPLETE PWB MM-10A A-8068-348-A	512 MB(256MBx2) M470L3224FT0-CB3 6-705-094-01	256MB(256MBx1) M470L3224FT0-CB3 6-705-094-01
Opt.Drive	9.5mm Combo (*8) COMBO DRIVE (UJDA745,9.5MM) / COMBO DRIVE (UJDA755,9.5MM) 1-796-626-12 / 1-796-822-11				
W-Lan	MiniPCI CARD, WIRELESS LAN 1-761-784-11		None		
Battery	BP4V BP4V (U) ASSY (S) A-8114-139-A		BP2V BP2V (U) ASSY (S) A-8114-137-A		
Office	Office Personal 2003		Office XP SBE	None	
LABEL ID	V505DC1 LABEL ID (U) 4-679-532-11				

Confidential

PCG-V505F/V505T3x/V505W (J)
 PCG-V505DC1x/V505DC1Px/V505DH/V505DX/V505DXP (AM)
 PCG-V505CP (EU)
 PCG-V505MCP/V505MP/V505MLP/V505MSP/V505MTP (AO)



PCG-V505F/V505T3x/V505W (J)
 PCG-V505DC1x/V505DC1Px/V505DH/V505DX/V505DXP (AM)
 PCG-V505CP (EU)
 PCG-V505MCP/V505MP/V505MLP/V505MSP/V505MTP (AO)

List of PCG-V505 Series (As of November, 2003)

Service Manual Part No.	Model Name			
	J	AM	EU	AO
9-876-081-XX	PCG-V505/B PCG-V505R/PB			
9-876-082-XX		PCG-V505AX PCG-V505AXP		
9-876-084-XX		PCG-V505FP		
9-876-083-XX			PCG-V505AP PCG-V505AK PCG-V505BP	
9-876-085-XX				PCG-V505P
9-876-086-XX				PCG-V505L
9-876-088-XX				PCG-V505SP
9-876-089-XX				PCG-V505T
9-876-087-XX				PCG-V505CP PCG-V505ZCP
9-876-310-XX	PCG-V505E/B PCG-V505S/PB PCG-V505V/P			
9-876-311-XX		PCG-V505BL PCG-V505BX PCG-V505BXP		
9-876-312-XX		PCG-V505GFP PCG-V505GZFP		
9-876-313-XX				PCG-V505GP PCG-V505GZC
9-876-315-XX				PCG-V505GCP
9-876-314-XX				PCG-V505GL
9-876-316-XX				PCG-V505GSP
9-876-317-XX				PCG-V505GTP
9-876-357-XX		PCG-V505DC2* PCG-V505DC2K* PCG-V505DC2P*		
9-876-346-XX		PCG-V505MFP		
9-876-348-XX				PCG-V505MZC
9-876-347-XX				PCG-V505MZL

Service Manual Part No.	Model Name			
	J	AM	EU	AO
9-876-349-XX	PCG-V505F/B	PCG-V505DC1x*	PCG-V505CP	PCG-V505MCP
	PCG-V505T3/Px*	PCG-V505DC1Px*		PCG-V505MLP
	PCG-V505T3x*	PCG-V505DH		PCG-V505MP
	PCG-V505W/P	PCG-V505DX PCG-V505DXP		PCG-V505MSP PCG-V505MTP

* : CTO model
 : Additional Models

This manual and the constituent data may not be replicated, copied nor reprinted in whole or in part without prior written authorization of Sony Corporation.

本マニュアルの一部、または全部について、無断でデータの複製、複写、転載することを禁じます。

Revision History

Suffix	Ver.	Date	Contents	QM No.
-01	Ver. 1	2003.10.14	First Edition	
-02	Ver. 2	2003.10.20	① Page 4-2, Page 4-3, Page 4-4, Page 4-5	N2003_089CK
-03	Ver. 3	2003.10.29	② Front Page (Model Lineup), Page 1-1, Page 4-1 to 4-6, Page 5-3, Back Cover	N2003_088AK
-04	Ver. 4	2003.11.25	③ Front Page (Model Lineup), Page 1-1, Page 4-1 to 4-4, Page 4-6, Back Cover	N2003_092AK
<Remarks>				

[Confidential]

PCG-V505F/V505T3x/V505W (J)

PCG-V505DC1x/V505DC1Px/V505DH/V505DX/V505DXP (AM)

PCG-V505CP (EU)

PCG-V505MCP/V505MP/V505MLP/V505MSP/V505MTP (AO)