

# Service Manual

## AUTOMOTIVE ELECTRONICS

COMPACT  
disc  
DIGITAL AUDIO



<CQ-JH8061Z>

## HONDA

### CQ-JH8061Z

### CQ-JH8062Z

AM/FM MPX ELECTRONIC TUNING  
RADIO with CD Player

PART No. (CQ-JH8061Z) : 39100-S0X-C010

(CQ-JH8062Z) : 39100-S0X-A210

ID CORD : 1XX1

VEHICLE (CQ-JH8061Z) : ODYSSEY

(CQ-JH8062Z) : ODYSSEY (w/NAVI)

DESTINATION : North America

PRODUCED AFTER : Aug., 2000

## Specification\*

### General

Power Supply	DC 12V (11V - 16V), Test Voltage 13.2V Negative Ground
Current Consumption	Less than 3.0A (at 0.5W)
Speaker Output	20W×4ch
Speaker Impedance	4Ω

### AM Radio

Frequency Range	530 - 1,710kHz
Usable Sensitivity	24dB/μV (S/N 20dB)

### FM Stereo Radio

Frequency Range	87.7 - 107.9MHz
Usable Sensitivity	7dB/μV (S/N 30dB)

### CD Player

Signal to Noise Ratio	More than 66dB (IHF-A)
Channel Separation	More than 50dB (IHF-A)
Dimensions** (W×H×D)	180×172×52mm
Weight**	1.6kg

\* Specifications and the design are subject to possible modification without notice due to improvements.

\*\* Dimensions and Weight shown are approximate.

# CONTENTS

	Page		Page
1 FEATUERS .....	2	9 PACKAGE AND IC BLOCK DIAGRAM .....	9
2 LASER PRODUCTS .....	2	10 REPLACEMENT PARTS LIST .....	13
3 REAR VIEW AND CONNECTORS .....	3	11 EXPLODED VIEW (Unit) .....	18
4 FRONT VIEW AND FUNCTIONS .....	3	12 CD Player Parts .....	19
5 WIRING CONNECTIONS .....	4	13 EXPLODED VIEW (CD Deck) .....	21
6 BLOCK DIAGRAM (Main Block) .....	5	14 WIRING DIAGRAM .....	22
7 BLOCK DIAGRAM (CD Servo Block) .....	6	15 SCHEMATIC DIAGRAM -1 .....	26
8 TERMINALS DESCRIPTION .....	7	16 SCHEMATIC DIAGRAM -2 .....	27

## 1 FEATUERS

- PLL (Phase Locked Loop) synthesized tuning.
- 18-station preset (12-FM, 6-AM).
- CD random, repeat play frction.
- Electronic control of power and sound.
- CD changer control.
- Anti-Theft system.

## 2 LASER PRODUCTS

**Do not take apart this unit or attempt to make any changes yourself.**

This unit is very intricate that uses a laser pickup to retrieve information from the suface of compact discs. The laser is carefully shielded so that its rays remain inside the cabinet. Therefore, never try to disassemble the player or alter any of its parts since you may be exposed to laser rays and dangerous voltages.

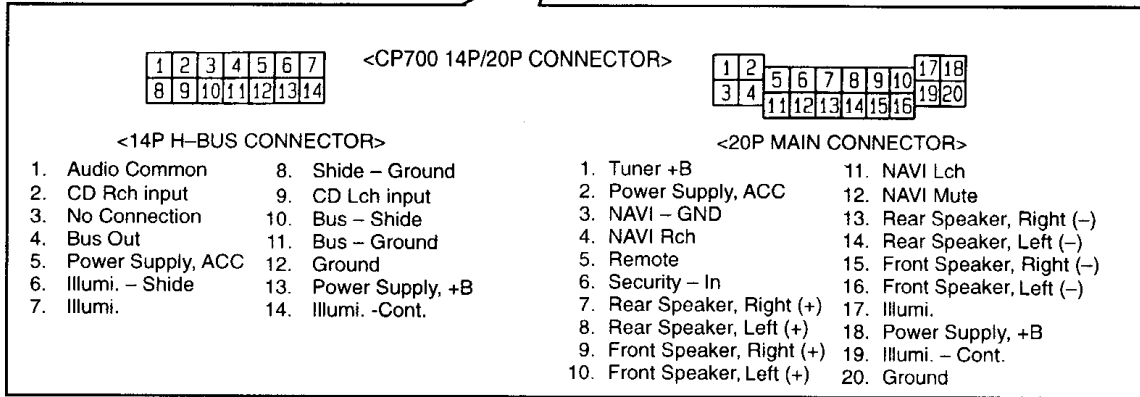
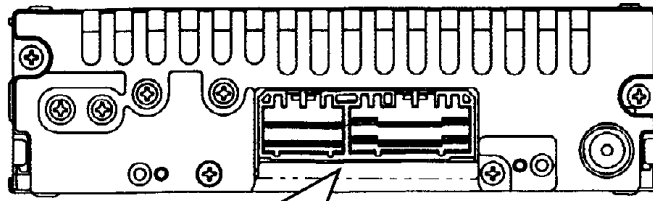
**Laser products :**

Wave length	780nm
Laser power	No hazardous radiation is emitted with safety protection.

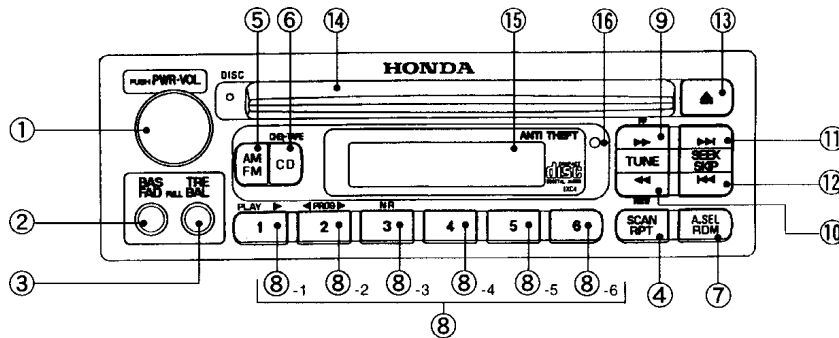
**Caution**

This product utillzes a laser. Use of controls or adjustments or performance of procedures other than those specified herein may result in hazardous radiation exposure.

### 3 REAR VIEW AND CONNECTORS

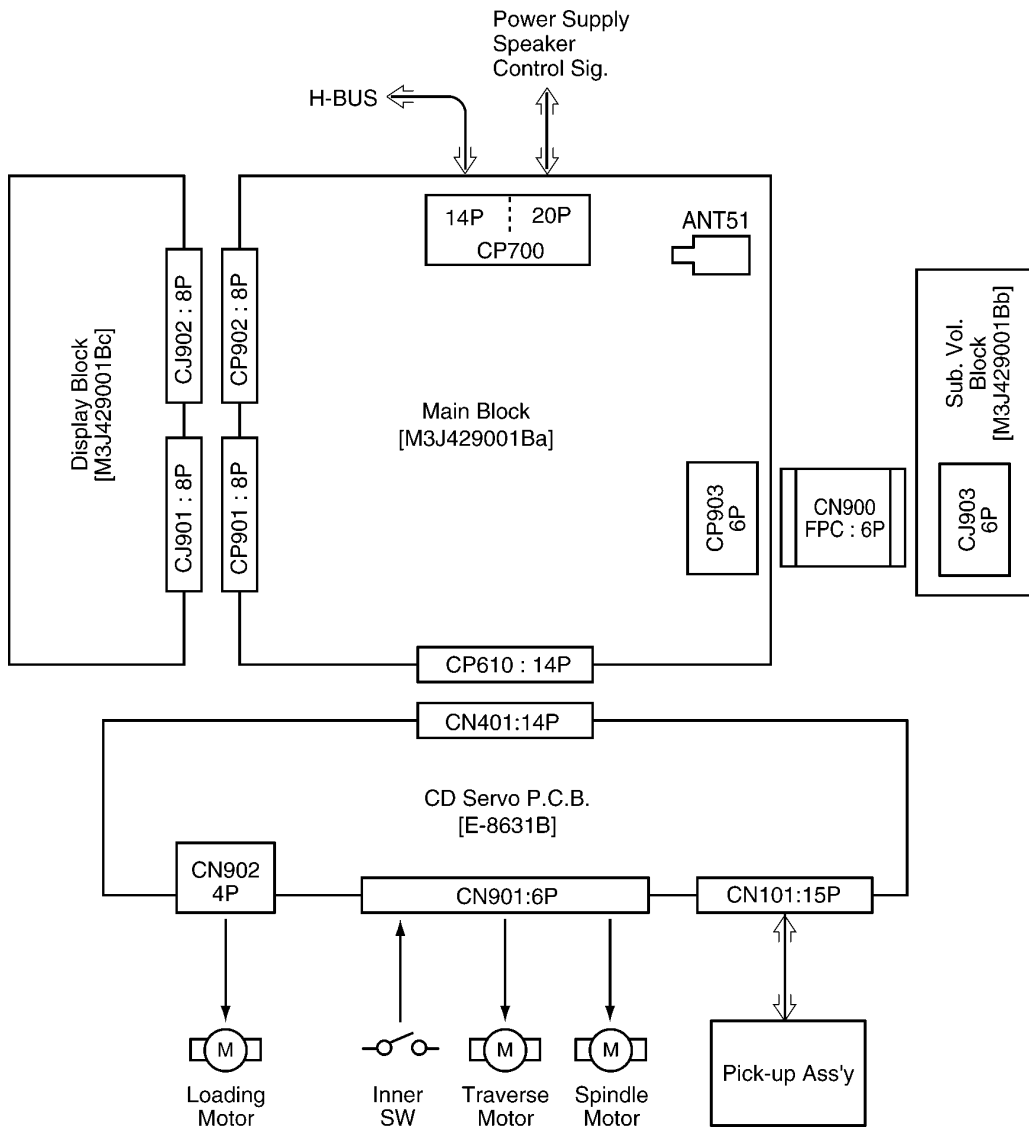


### 4 FRONT VIEW AND FUNCTIONS



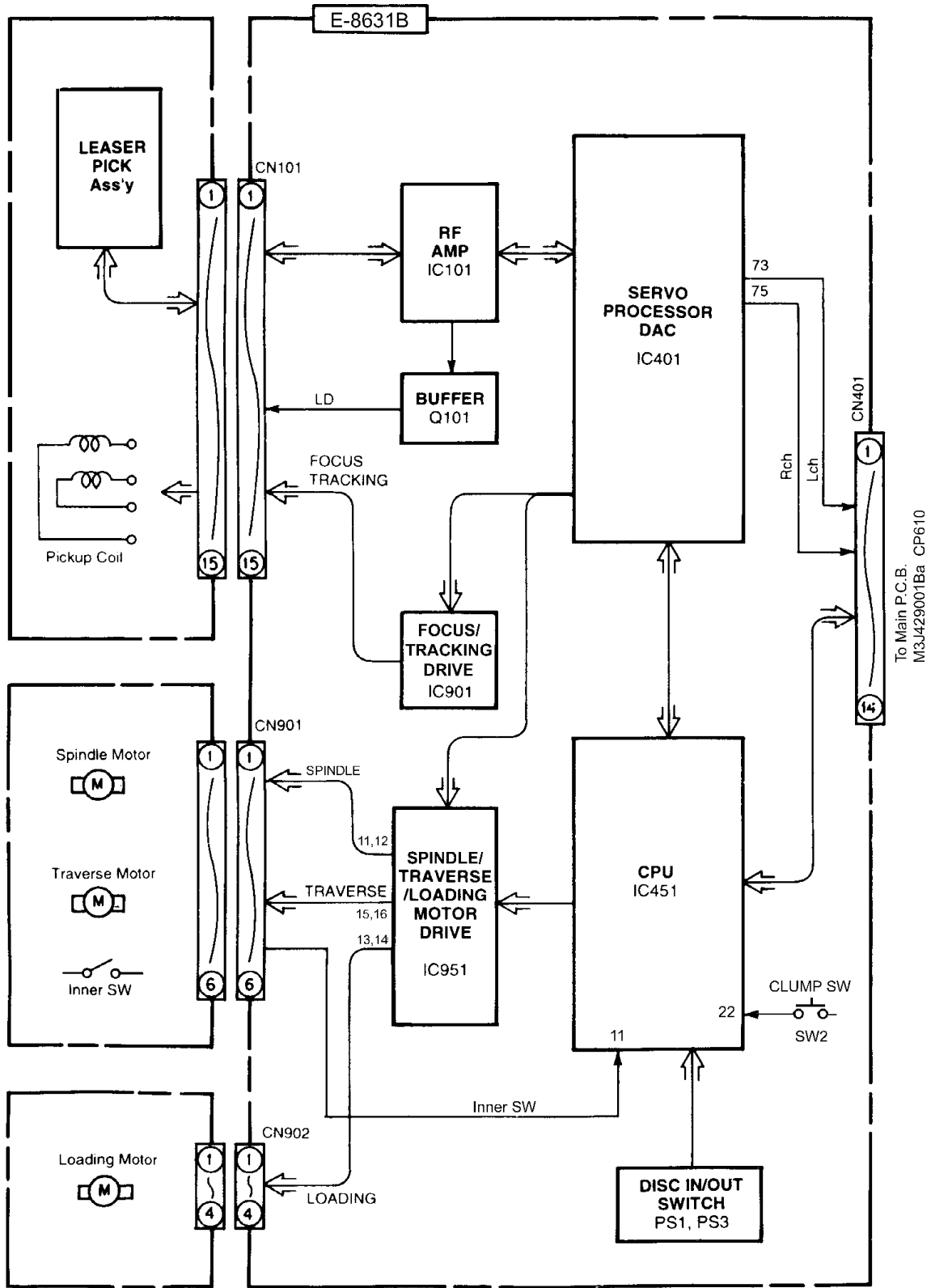
- |                      |  |   |    |                       |
|----------------------|--|---|----|-----------------------|
| ① PWR SW             | : Power ON/OFF.  | ⑨ | ▶▶ | : Radio tuning up.    |
| VOL                  | : Increase/Decrease of Volume.                                       |   |    | : CD/CD.C /TAPE FF.   |
| ② BAS/FAD            | : Bass/Fader control.  | ⑩ | ◀◀ | : Radio tuning down.  |
| ③ TRE/BAL            | : Treble/Balance control.  |   |    | : CD/CD.C / TAPE REW. |
| ④ SCAN               | : Radio seek up.   | ⑪ | ▶▶ | : Radio seek up.      |
| RPT                  | : CD repeat play.  |   |    | : CD/CD.C track up.   |
| ⑤ AM/FM              | : Radio band selection.  | ⑫ | ◀◀ | : Tape MS forward.    |
| ⑥ CD                 | : CD mode selection.   |   |    | : Radio seek down.    |
| CHE-TAPE             | : TAPE mode selection.   | ⑬ | ▲  | : CD/CD.C track down. |
| ⑦ A. SEL             | : Radio seek start.  |   |    | : Tape MS backward.   |
| RDM                  | : CD random play.  | ⑭ |    | : CD eject.           |
| ⑧ 1 ~ 6              | : Preset radio frequency or calls preset frequency/CD.C disc change. | ⑮ |    |                       |
| ⑧ <sub>-1</sub> PLAY | : Tape play.   | ⑯ |    |                       |
| ⑧ <sub>-2</sub> PROG | : Tape program change.   |   |    |                       |
| ⑧ <sub>-3</sub> NR   | : Dolby NR selection.  |   |    |                       |

# 5 WIRING CONNECTIONS





# 7 BLOCK DIAGRAM (CD Servo Block)



## 8 TERMINALS DESCRIPTION

### 8.1. Main Block

IC600 : C2BBGE000242

Pin No.	Port	Descriptions	I/O	Vol (V)
1	/NAVI IN	NAVI mute input	I	4.5
2	ST IN	FM stereo detection	I	0.3
3	Ga input	(+5V pull-up)	I	4.5
4	/ILM	Illumination on	I	4.5
5	/POW SW	Power switch input	I	4.2
6	IC CLK	Power cont. IC clock	O	0
7	BEEP	Beep output	O	0
8	SEC DI	Security data0 output	I	0
9	VSS	Ground	-	0
10	SEC DO	Security data output	O	0
11	PLL/VOL CLK	PLL/Vol. cont clock	O	0
12	PLL/VOL DATA	PLL/Vol. cont data	O	0
13	VOL CLK	Vol. cont clock	O	0
14	IC STBY	Power IC stand-by	O	4.9
15	IC DATA	Power IC control data	O	4.9
16	IC LATCH	Power IC data latch	O	4.9
17	CH CONT	CD changer BUS data	O	0
18,19	SET S0, 1	Setting value strobe	O	0
20-22	SET R0-2	Setting Value return	I	0
23	ACC DROP	ACC level detection	I	3.8
24	VSS	Ground	-	0
25	F MUTE	Front mute	O	0
26	R MUTE	Rear mute	O	0
27	CD RESET	CD reset	O	4.0
28	/SEC LED	Security LED on/off	O	4.7
29	VOL A	Rotary encoder signal	I	0.8
30	VOL B	Rotary encoder signal	I	0.8
31	PLL DI	PLL data input	I	0
32	PLL STB	PLL strobe	O	0
33	SEC CLK	Security clock	O	0
34	SEC CS	Security IC chip enable	O	0
35	/RESET	Reset input	I	4.4
36	CH IN	CD changer detection	I	4.7
37	/CD EJECT	CD eject SW	I	4.4
38	FCONT1	OSC control	O	0
39	FCONT2	OSC control	O	4.7
40	VDD	+5V power supply	-	4.9
41	X2	Crystal oscillator	-	2.7
42	X1	Crystal oscillator	-	1.1
43	IC (VSS)	(Connecting to ground)	-	0
44	XT2	Crystal oscillator	-	2.4
45	XT1	Crystal oscillator	-	0.7
46	AVSS	Ground	-	0
47	V AM/FM	Radio signal strength	I	0.2
48	BASS	Bass setting level	I	2.4
49	TRE	Treble setting level	I	2.4
50	FAD	Fader setting level	I	2.4
51	BAL	Balance setting level	I	2.4
52	RMT CONT	Remote control	I	5.0
53	TEMP IN	Temperature input	I	3.0
54	BAT DROP	Battery level detection	I	4.3
55	AVDD	+5V power supply	-	4.9
56	AVREF	+5V power supply	-	5.0
57	LCD DATA	LCD data output	O	0
58	LCD DI	LCD data input	I	4.7
59	LCD CLK	LCD clock	O	0
60	LCD STB	LCD strobe	O	0
61	TIME ACC	(Ground pull-down)	-	0
62	SIM	CD data input	I	0.2
63	SOM	CD data output	O	1.4
64	SCKM	CD data clock	O	4.8

Note : Voltage measurements are with respect to ground, with a voltmeter (internal resistance : 10M ohms).

### 8.2. Display Block

IC901 : C0HBA000017

Pin No.	Port	Descriptions	I/O	Vol (V)
1	P1	Disc LED control	O	0
2	P2	Illumi. dimmer control	O	0
3-8	-	No connection	-	-
9-39	SEG9-39	LCD segment data output	O	2.5
40	SEG40	No connection	-	-
41-43	COM1-3	LCD common output	O	2.5
44	S41	No connection	-	-
45-48	KS2-5	Key scan signal	O	0.9
49	KS6	No connection	-	-
50-53	KI1-4	Key return signal	I	0
54	KI5	(Connecting to ground)	-	0
55	TEST	(Connecting to ground)	-	0
56	VDD	+5V power supply	-	5.1
57	VDD1	Ground through capacitor	-	3.3
58	VDD2	Ground through capacitor	-	1.7
59	VSS	Ground	-	0
60	OSC	CR oscillator terminal	-	3.9
61	DO	Key data output	O	4.4
62	CE	Chip enable	I	0
63	CLK	LCD clock	I	0
64	DI	LCD data	I	0

### 8.3. CD Servo Block

#### IC01 : MN662783RPMF

Pin No.	Port	Descriptions	I/O	Vol (V)
1	BCLK (NC)	Not used	-	-
2	LRCK (NC)	Not used	-	-
3	SRDATA (NC)	Not used	-	-
4	DVDD1	+5V power supply for digital logic	-	5.0
5	DVSS1	Ground	-	0
6	TX (NC)	Not used	-	-
7	MCLK	Micro computer command clock	I	0
8	MDATA	Micro computer command data	I	1.0
9	MLD	Micro computer command load	I	4.9
10	SENSE	Sence signal	O	0
11	/FLOCK	Focus servo lock signal	O	0
12	/TLOCK	Tracking servo lock signal	O	0
13	BLKCK (NC)	Not used	-	-
14	SQCK	Sub. code-Q reg. clock	I	4.9
15	SUBQ	Sub. code-Q data	O	2.7
16	DMUTE	Mute input	I	0
17	STAT	Status signal	O	4.0
18	/RST	Reset input	I	4.9
19	SMCK (NC)	Not used	-	-
20	PMCK (NC)	Not used	-	-
21	TRV	Traverse force feed	O	2.5
22	TVD	Traverse drive signal	O	2.5
23	PC (NC)	Not used	-	-
24	ECM	Spindle motor drive signal	O	0
25	ECS	Spindle motor drive signal	O	2.4
26	KICK	Kick pulse output	O	0
27	TRD	Tracking drive signal	O	2.5
28	FOD	Focus drive signal	O	2.5
29	VREF	Reference voltage input	I	2.5
30	FBAL	Focus balance adjustment output	O	2.8
31	TBAL	Tracking balance adjustment output	O	2.6
32	FE	Focus error signal	I	2.4
33	TE	Tracking error signal	I	2.5
34	RFENV	RF envelope signal	I	2.5
35	VDET	Vibration detection signal	I	0
36	OFT	Off track signal	I	0
37	TRCRS	Track cross signal	I	0
38	/RFDET	RF detection signal	I	0
39	BDO	Drop out signal	I	0
40	LDON	Laser on/off	O	4.9
41	PLL F2 (NC)	Not used	-	-
42	TOFS	TE offset	O	2.4
43	WVEL (NC)	Not used	-	-
44	ARF	RF signal	I	2.5
45	IREF	Reference current input	I	1.2
46	DRF	DSL bias	I	2.5
47	DSLFL	DSL loop filter	I/O	2.5
48	PLLFL	PLL loop filter	I/O	1.8
49	VCOF (NC)	Not used	-	-
50	AVDD2	+5V power supply for analog logic	-	5.0
51	AVSS2	analog logic ground	-	0
52	EFM (NC)	Not used	-	-
53	PCK/DSLBI	DSL bias	I	2.4
54	VCOF2	Tracking offset adjustment output	O	2.1
55	SUBC (NC)	Not used	-	-
56	SBCK	(Connecting to ground)	-	0
57	VSS	Ground	-	0
58	X1	Crystal oscillator terminal	I	2.1
59	X2	Crystal oscillator terminal	O	2.4
60	VDD	+5V power supply	-	5.0
61	BYTCK (NC)	Not used	-	-
62	/CLDCK (NC)	Not used	-	-
63	FCLK (NC)	Not used	-	-
64	IP FLAG (NC)	Not used	-	-
65	FLAG (NC)	Not used	-	-

Pin No.	Port	Descriptions	I/O	Vol (V)
66	CLVS (NC)	Not used	-	-
67	CRC (NC)	Not used	-	-
68	DEMPH (NC)	Not used	-	-
69	RESY (NC)	Not used	-	-
70	IOSEL	(Connecting to VDD)	-	5.0
71	/TEST	(Connecting to VDD)	-	5.0
72	AVDD1	+5V power supply for analog logic	-	4.8
73	OUTL	Audio Lch	O	2.4
74	AVSS1	Analog ground	-	0
75	OUTR	Audio Rch	O	2.4
76	RSEL	(Connecting to VDD)	-	5.0
77	CSEL	(Connecting to VDD)	I	0
78	PSEL	(Connecting to ground)	I	0
79	MSEL	(Connecting to VDD)	I	0
80	SSEL	(Connecting to VDD)	I	5.0

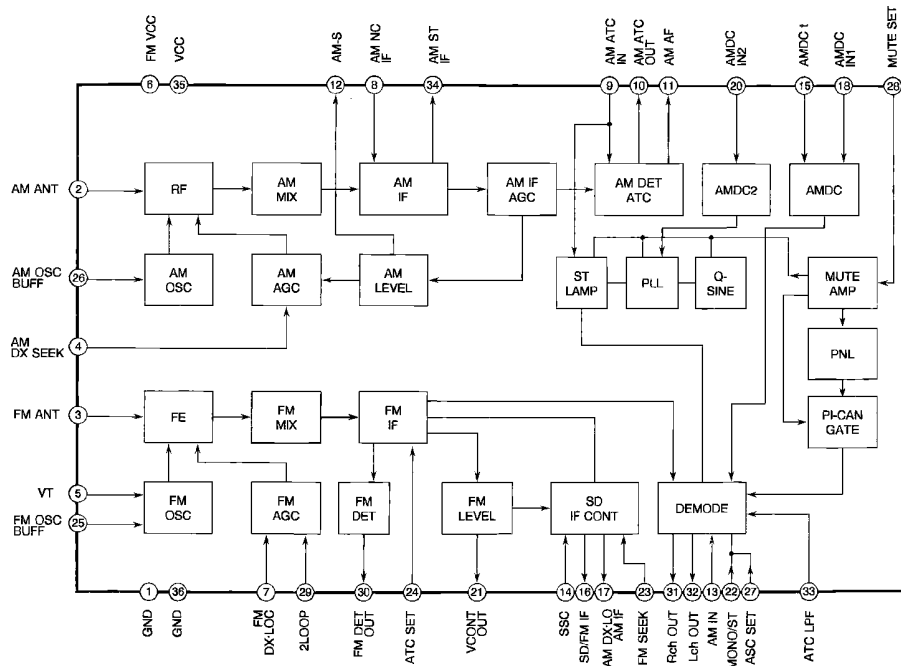
#### IC451 : MN101C427AE1

Pin No.	Port	Descriptions	I/O	Vol (V)
1	MUTE	CD mute	O	0
2	SCKM	Communication clock	O	4.8
3	SOM	Communication data output	O	3.6
4	SIM	Communication data input	I	0
5	PA0	Ground	-	0
6	PA1	Ground	-	0
7	PA2	Ground	-	0
8	PA3	Ground	-	0
9	PA4	Ground	-	0
10	PA5	Ground	-	0
11	INNER	Disc inner SW	I	4.9
12	OUT	Disc-OUT detection SW	I	4.9
13	VDD	+5V power supply	-	4.9
14	OSC2	Crystal oscillator terminal	I	2.4
15	OSC1	Crystal oscillator terminal	I	2.4
16	VSS	Ground	-	0
17	NC	Not used	-	-
18	SBD0 (NC)	Not used	-	-
19	SUB0	Q-code data	I	0
20	SQCK	Q-code data shift clock	I/O	4.9
21	IN	Inner SW	I	4.9
22	CLUMP	Disc clamp SW	I	0
23	PC2	Spindle motor drive	O	0
24	PC3	Loading motor drive	O	4.8
25	LOD	Loading motor control	O	0
26	BRK	Loading motor break control	O	0
27	IRQ0	Vibration detection	I	0
28	CD.ON	CD operation control	I	4.9
29	IRQ2	CD operation control	I	4.9
30	TRV	Traverse motor control	O	2.5
31	PC1	Focus/Tracking drive	O	4.6
32	BD0	Black spot detection	I	0
33	/PRST	Servo LSI reset	O	4.9
34	STAT	Servo LSI status signal	I	4.0
35	D.MUTE	Servo LSI mute	O	0
36	/TLOCK	Tracking servo lock detection	I	0
37	/FLOCK	Focus servo lock detection	I	0
38	SENSE	Servo LSI status	I	0
39	NRST	CPU reset	I	4.9
40	MMOD	(Connecting to ground)	-	0
41	P87	Ground	-	0
42	MLD	Command data latch	O	4.9
43	MDATA	Command data	O	1.0
44	MCLK	Command data shift clock	O	3.8

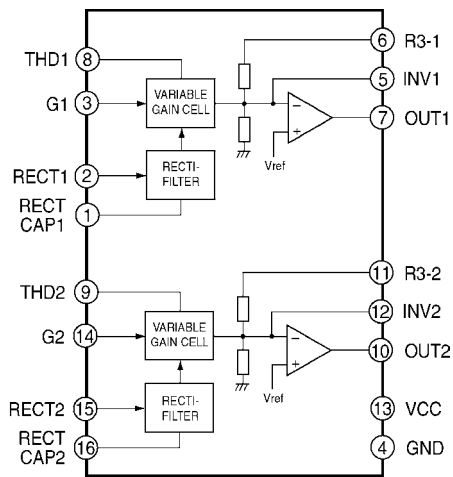


# 9 PACKAGE AND IC BLOCK DIAGRAM

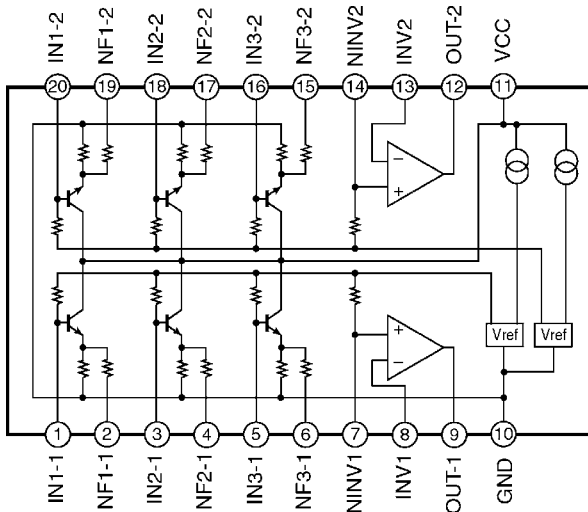
## 9.1. Main Block



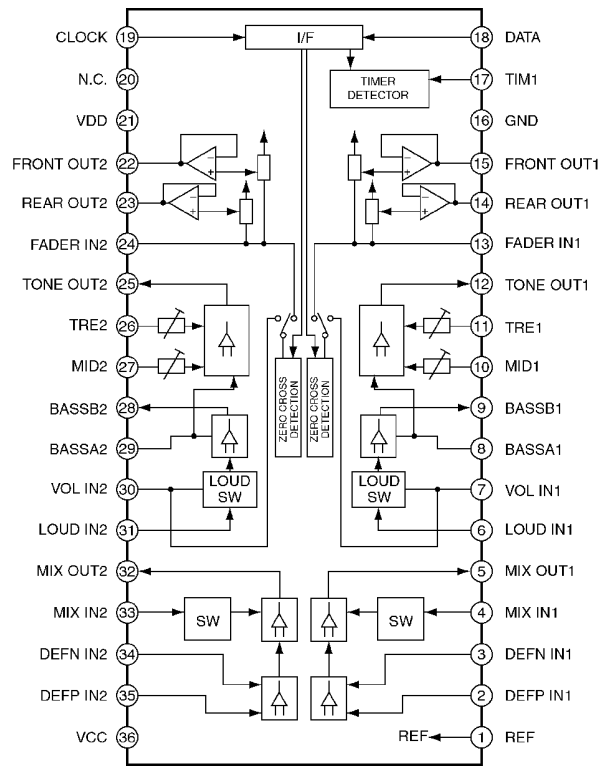
PK50 : YEP0PTA514B0



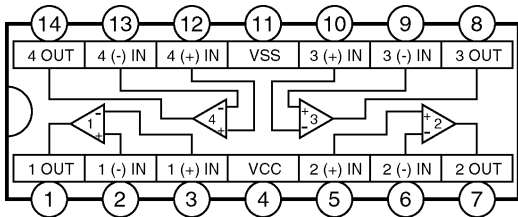
IC202,302 : C1CB0000022



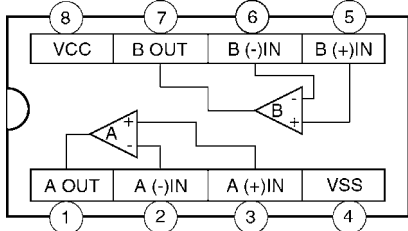
IC204,304 : C1BB00000209



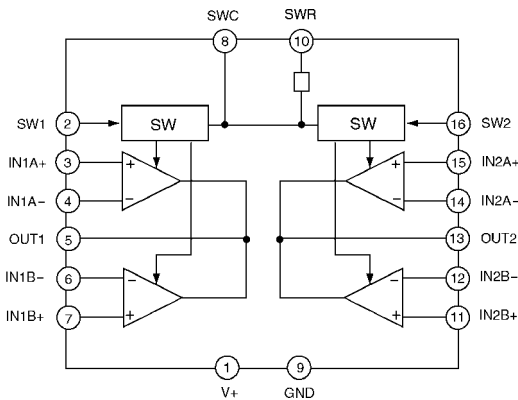
IC200 : C1BB00000230



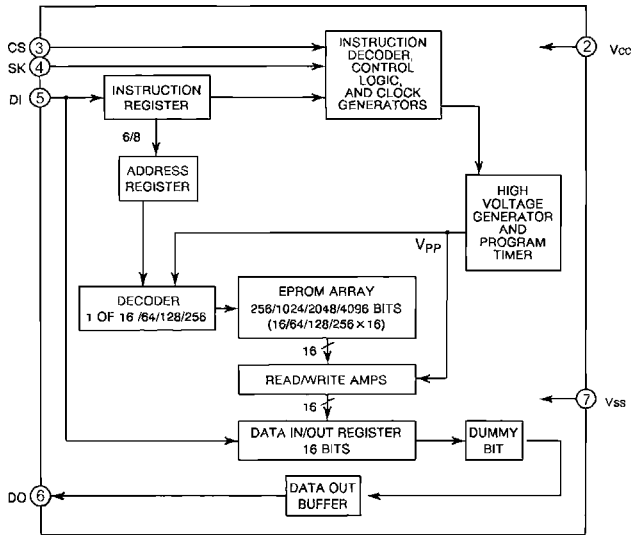
IC203,303 : C0ABC000015



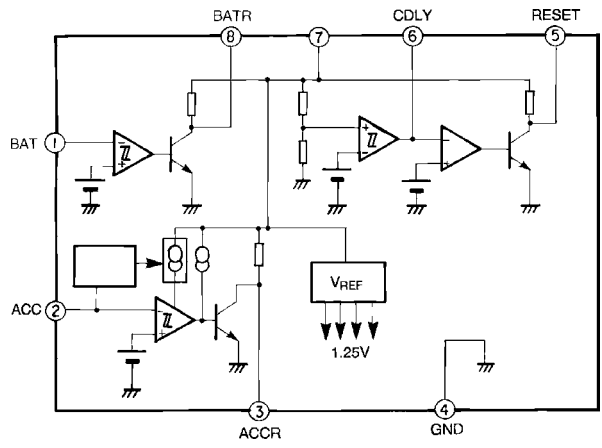
IC205,291,705 : C0ABBB000073



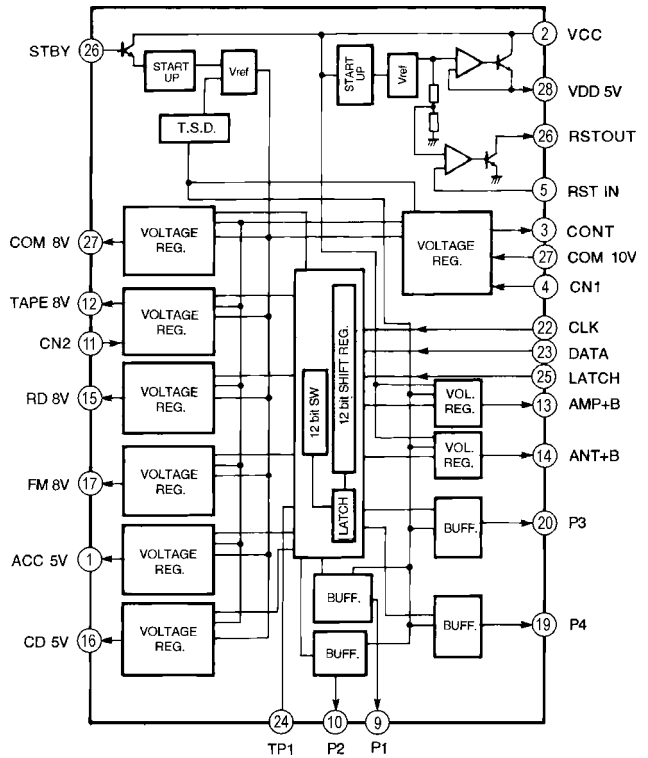
IC250 : C0ABBA000053



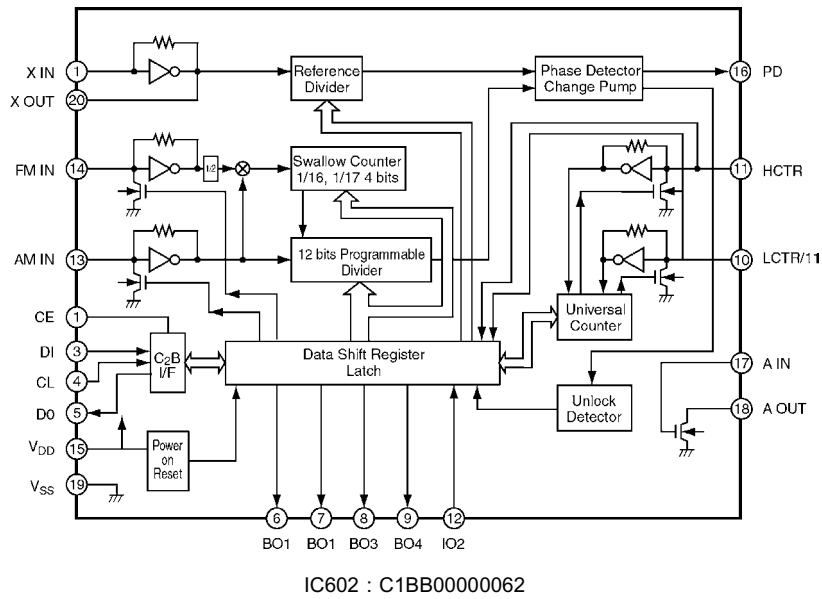
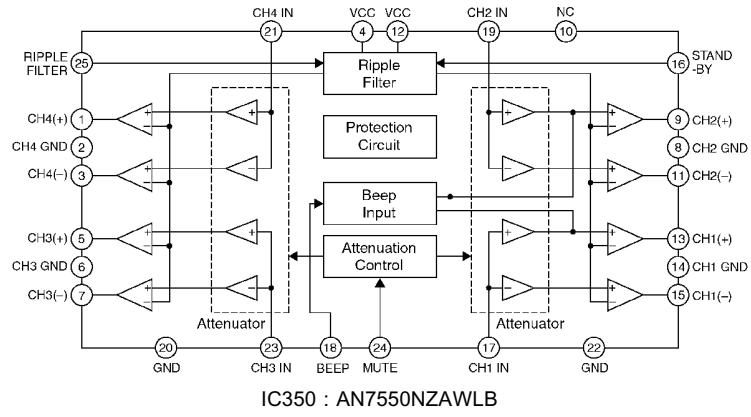
IC601 : C3EBCG000037



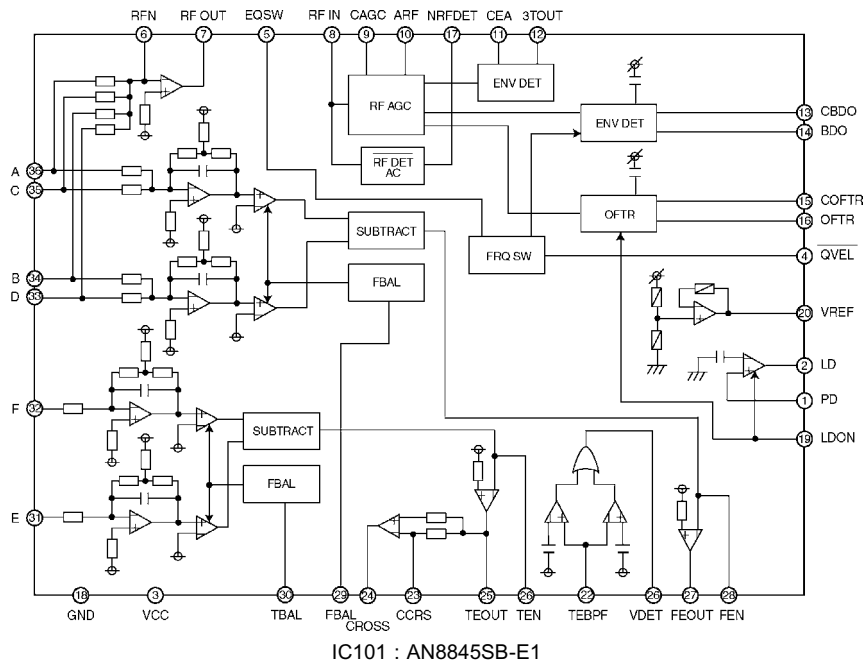
IC703 : AN8065SE1

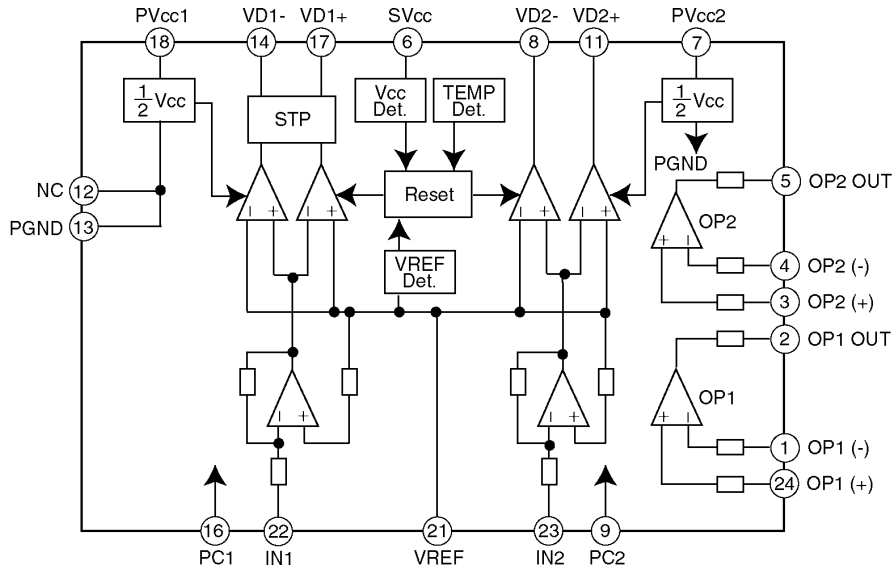


IC701 : C0DBZH000005

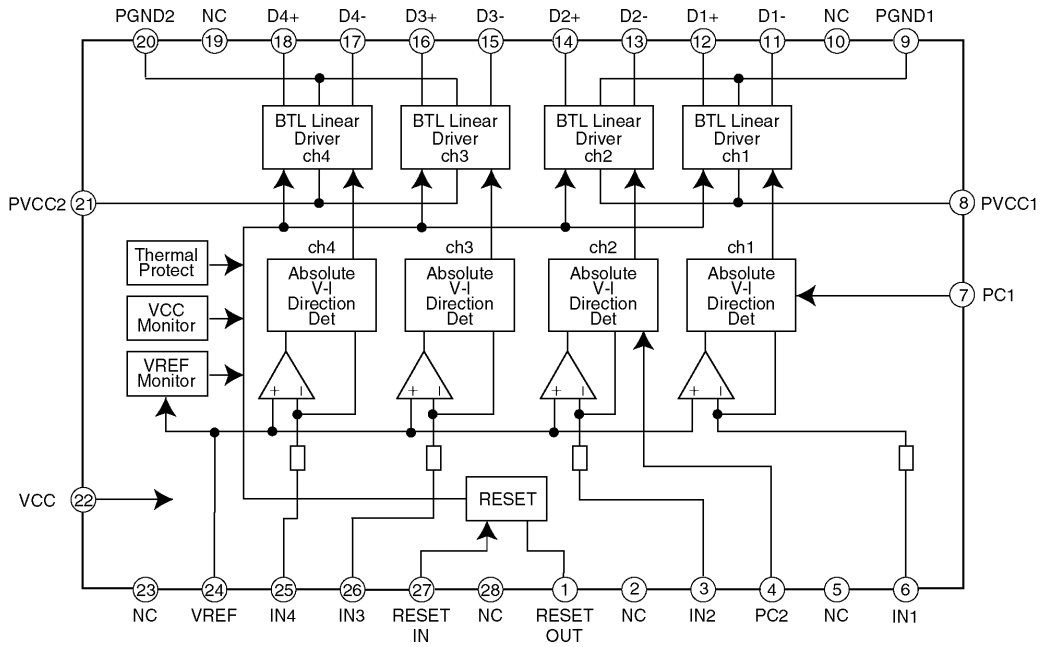


## 9.2. CD Servo Block





IC901 : AN8735NSB-E1



IC951 : AN8780SB-E1

# 10 REPLACEMENT PARTS LIST

## Notes :

- Be sure to make your orders of replacement parts according to this list.
- Important safety notice: Components, identified by  $\Delta$  mark have special characteristics important for safety. When replacing any of these components, use only manufacturer's specified parts.
- Location keys in the remarks column indicates the general location of the parts shown in the exploded drawing, as in a road map.
- The marking (RTL) indicates that Retention Time is limited for this item. After the discontinuation of assembly in production, the item will continue to be available for a specific period of time. The retention period of availability is dependent on the type of assembly, and in accordance with the laws governing part and product retention. After the end of this period, the assembly will no longer be available.
- "MCC" marks in remarks column are indicated supply parts of Matsushita Communication Industrial Corp. of America (MCC).
- "A" or "B" marks in remarks column are indicated as follows :
  - A : CQ-JH8061Z
  - B : CQ-JH8062Z

Ref. No.	Part No.	Part Name & Description	Remarks
[M3J429001B] Main Block			
IC's and TRANSISTORS			
IC200	C1BB00000230	IC	
IC202	C1CB00000022	IC	
IC203	C0ABCB000015	IC	
IC204	C1BB00000209	IC	
IC205	C0ABBB000073	IC	
IC250	C0ABBA000053	IC	
IC291	C0ABBB000073	IC	
IC302	C1CB00000022	IC	
IC303	C0ABCB000015	IC	
IC304	C1BB00000209	IC	
IC350	AN7550NZAWLB	IC	
IC600	C2BBGE000242	IC	
IC601	C3EBCG000037	IC	
IC602	C1BB00000062	IC	
IC701	C0DBZH000005	IC	
IC703	AN8065SE1	IC	
IC705	C0ABBB000073	IC	
IC901	C0HBA0000017	IC	
PK50	YMPOPTA514B0	Electronic Tuner Pack	
Q51	B1GBCFJJ0004	Transistor	
Q201	YEANC323TKTX	Transistor	
Q251	YEANC323TKTX	Transistor	
Q301	YEANC323TKTX	Transistor	
Q351	YEANC323TKTX	Transistor	
Q600	B1GBCFJJ0004	Transistor	
Q604	B1GDCFNN0003	Transistor	
Q606	B1GBCFJN0005	Transistor	
Q607	B1ABCF000044	Transistor	
Q608	B1GBCFNN0005	Transistor	
Q700	2SB13980QA	Transistor	
Q701	B1GBCFJN0005	Transistor	
Q702	B1BACE000005	Transistor	
Q703	2SD22490LA	Transistor	
Q704	2SD0601AHL	Transistor	
Q705	B1BCDG000005	Transistor	

Ref. No.	Part No.	Part Name & Description	Remarks
Q706	B1GDCFJA0001	Transistor	
Q712	B1GBNCEJ0001	Transistor	
Q714	B1GBJCEJ0001	Transistor	
Q715	B1GBCFJJ0004	Transistor	
Q722	B1GDJEGJ0002	Transistor	
Q740	B1GBCFJN0005	Transistor	
Q741	B1GDCFJN0005	Transistor	
Q752	B1GBCFNN0005	Transistor	
Q760	B1GBCFJN0005	Transistor	
Q761	B1GDCFJN0005	Transistor	
Q791	B1CCBF000002	Transistor	
Q792	B1CCBF000002	Transistor	
Q793	B1GDCFLL0002	Transistor	
Q901	B1GDCFJJ0004	Transistor	
Q902	B1GBCFJN0005	Transistor	
Q903	B1GDCFLL0002	Transistor	
DIODES			
D103	MA151WKTXX	Diode	
D601	MA151WATX	Diode	
D602	MA151KTX	Diode	
D620	MA151KTX	Diode	
D650	MA151KTX	Diode	
D651	MA151WKTXX	Diode	
D652	MA151WKTXX	Diode	
D653	MA151WKTXX	Diode	
D691	MA151KTX	Diode	
D692	B0BC4R900005	Diode	
D700	B0JCPE000004	Diode	
D701	B0EANM000003	Diode	
D702	B0ZAZ0000007	Diode	
D703	B0ECKL000001	Diode	
D704	MA151WKTXX	Diode	
D705	B0BC8R700002	Diode	
D706	MA151KTX	Diode	
D710	B0ECKL000001	Diode	
D741	MA151WKTXX	Diode	
D742	B0BC4R600003	Diode	
D751	B0ECKL000001	Diode	
D760	MA151KTX	Diode	
D761	MA151WKTXX	Diode	
D951	B3AAA0000023	Diode	
D952	YEADPG1101WS	Diode	
CAPACITORS			
C51	F1J1H102A509	Ceramic, 1000PF 50WV	
C52	F1J1H103A509	Ceramic, 0.01 $\mu$ F 50WV	
C53	ECEA1AKS221I	Electrolytic, 220 $\mu$ F 10WV	
C54	F1J1C154A006	Ceramic, 0.15 $\mu$ F 16WV	
C55	F1J1H1530003	Ceramic, 0.015 $\mu$ F 50WV	
C56	F1J1E333A002	Ceramic, 0.033 $\mu$ F 25WV	
C57	F1J1E223A002	Ceramic, 0.022 $\mu$ F 25WV	
C58	ECEA1CKS100I	Electrolytic, 10 $\mu$ F 16WV	
C59	F1J1E223A002	Ceramic, 0.022 $\mu$ F 25WV	
C60	F1J1H151A034	Ceramic, 150PF 50WV	
C61	F1J1H101A034	Ceramic, 100PF 50WV	
C62	F1J1H102A509	Ceramic, 1000PF 50WV	
C64	F1J1H471A034	Ceramic, 470PF 50WV	
C65	F1J1E333A002	Ceramic, 0.033 $\mu$ F 25WV	
C66	F1J1E333A002	Ceramic, 0.033 $\mu$ F 25WV	
C67	F1J1H103A509	Ceramic, 0.01 $\mu$ F 50WV	
C68	EEAFC1A820H	Electrolytic, 82 $\mu$ F 10WV	
C69	F1J1E223A002	Ceramic, 0.022 $\mu$ F 25WV	
C71	F1J1H2R0A007	Ceramic, 2PF 50WV	
C151	F1J1C104A005	Ceramic, 0.1 $\mu$ F 16WV	
C155	F1J1H472A509	Ceramic, 4700PF 50WV	
C156	F1J1H472A509	Ceramic, 4700PF 50WV	
C201	ECEA1HKS2R2I	Electrolytic, 2.2 $\mu$ F 50WV	
C202	F1J1H821A034	Ceramic, 820PF 50WV	
C203	F1J1H470A034	Ceramic, 47PF 50WV	
C204	ECEA1HKS2R2I	Electrolytic, 2.2 $\mu$ F 50WV	

Ref. No.	Part No.	Part Name & Description	Remarks
C205	ECEA1HKS2R2I	Electrolytic, 2.2μF 50WV	
C206	FLJ1H560A034	Ceramic, 56PF 50WV	
C207	FLJ1H560A034	Ceramic, 56PF 50WV	
C209	ECEA1HKS010I	Electrolytic, 1μF 50WV	
C210	FLK1C105A026	Ceramic, 1μF 16WV	
C211	FLJ1E223A002	Ceramic, 0.022μF 25WV	
C212	FLJ1E223A002	Ceramic, 0.022μF 25WV	
C213	FLJ1H103A509	Ceramic, 0.01μF 50WV	
C214	FLJ1H472A509	Ceramic, 4700PF 50WV	
C215	FLJ1C6830001	Ceramic, 0.068μF 16WV	
C216	FLJ1E333A002	Ceramic, 0.033μF 25WV	
C217	FLJ1H332A509	Ceramic, 3300PF 50WV	
C218	FLJ1H332A509	Ceramic, 3300PF 50WV	
C219	FLJ1C104A005	Ceramic, 0.1μF 16WV	
C220	ECEA1HKS2R2I	Electrolytic, 2.2μF 50WV	
C221	ECEA1CKS470I	Electrolytic, 47μF 16WV	
C222	ECEA1HKS2R2I	Electrolytic, 2.2μF 50WV	
C224	FLJ1H103A509	Ceramic, 0.01μF 50WV	
C225	FLJ1H103A509	Ceramic, 0.01μF 50WV	
C227	ECEA1HKS2R2I	Electrolytic, 2.2μF 50WV	
C228	ECEA1CKS470I	Electrolytic, 47μF 16WV	
C229	FLJ1C104A005	Ceramic, 0.1μF 16WV	
C230	FLJ1E393A002	Ceramic, 0.039μF 25WV	
C231	FLJ1C104A005	Ceramic, 0.1μF 16WV	
C232	FLJ1H390A034	Ceramic, 39PF 50WV	
C233	FLK1C105A026	Ceramic, 1μF 16WV	
C234	YECUV1C224KX	Ceramic, 0.22μF 16WV	
C235	FLJ1H471A034	Ceramic, 470PF 50WV	
C236	YECUS1C224KX	Ceramic, 0.22μF 16WV	
C237	FLJ1C6830001	Ceramic, 0.068μF 16WV	
C238	FLJ1C6830001	Ceramic, 0.068μF 16WV	
C239	FLJ1H103A509	Ceramic, 0.01μF 50WV	
C240	FLK1C105A026	Ceramic, 1μF 16WV	
C241	FLK1C105A026	Ceramic, 1μF 16WV	
C249	FLJ1H183A035	Ceramic, 0.018μF 50WV	
C250	FLJ1H1230002	Ceramic, 0.012μF 50WV	
C251	FLJ1H390A034	Ceramic, 39PF 50WV	
C252	ECEA1HKS2R2I	Electrolytic, 2.2μF 50WV	
C253	ECEA1HKS2R2I	Electrolytic, 2.2μF 50WV	
C255	FLJ1H152A509	Ceramic, 1500PF 50WV	
C260	FLJ1E4730003	Ceramic, 0.047μF 25WV	
C261	FLK1E333A019	Ceramic, 0.033μF 25WV	
C263	FLJ1H822A509	Ceramic, 8200PF 50WV	
C264	FLJ1C104A005	Ceramic, 0.1μF 16WV	
C271	FLJ1H390A034	Ceramic, 39PF 50WV	
C272	ECEA1HKS2R2I	Electrolytic, 2.2μF 50WV	
C273	ECEA1HKS47I	Electrolytic, 0.47μF 50WV	
C274	FLJ1H682A509	Ceramic, 6800PF 50WV	
C291	ECEA1HKS2R2I	Electrolytic, 2.2μF 50WV	
C292	FLJ1H560A034	Ceramic, 56PF 50WV	
C293	ECEA1HKS2R2I	Electrolytic, 2.2μF 50WV	
C294	FLJ1H560A034	Ceramic, 56PF 50WV	
C295	ECEA1HKS010I	Electrolytic, 1μF 50WV	
C299	FLJ1H102A509	Ceramic, 1000PF 50WV	
C301	ECEA1HKS2R2I	Electrolytic, 2.2μF 50WV	
C302	FLJ1H821A034	Ceramic, 820PF 50WV	
C303	FLJ1H470A034	Ceramic, 47PF 50WV	
C304	ECEA1HKS2R2I	Electrolytic, 2.2μF 50WV	
C305	ECEA1HKS2R2I	Electrolytic, 2.2μF 50WV	
C306	FLJ1H560A034	Ceramic, 56PF 50WV	
C307	FLJ1H560A034	Ceramic, 56PF 50WV	
C309	ECEA1HKS010I	Electrolytic, 1μF 50WV	
C310	FLK1C105A026	Ceramic, 1μF 16WV	
C311	FLJ1E223A002	Ceramic, 0.022μF 25WV	
C312	FLJ1E223A002	Ceramic, 0.022μF 25WV	
C313	FLJ1H103A509	Ceramic, 0.01μF 50WV	
C314	FLJ1H472A509	Ceramic, 4700PF 50WV	
C315	FLJ1C6830001	Ceramic, 0.068μF 16WV	
C316	FLJ1E333A002	Ceramic, 0.033μF 25WV	
C317	FLJ1H332A509	Ceramic, 3300PF 50WV	
C318	FLJ1H332A509	Ceramic, 3300PF 50WV	
C319	FLJ1C104A005	Ceramic, 0.1μF 16WV	
C320	ECEA1HKS2R2I	Electrolytic, 2.2μF 50WV	

Ref. No.	Part No.	Part Name & Description	Remarks
C321	ECEA1CKS470I	Electrolytic, 47μF 16WV	
C322	ECEA1HKS2R2I	Electrolytic, 2.2μF 50WV	
C324	FLJ1H103A509	Ceramic, 0.01μF 50WV	
C325	FLJ1H103A509	Ceramic, 0.01μF 50WV	
C327	ECEA1HKS2R2I	Electrolytic, 2.2μF 50WV	
C328	ECEA1CKS470I	Electrolytic, 47μF 16WV	
C329	FLJ1C104A005	Ceramic, 0.1μF 16WV	
C330	FLJ1E393A002	Ceramic, 0.039μF 25WV	
C331	FLJ1C104A005	Ceramic, 0.1μF 16WV	
C332	FLJ1H390A034	Ceramic, 39PF 50WV	
C333	FLK1C105A026	Ceramic, 1μF 16WV	
C334	YECUV1C224KX	Ceramic, 0.22μF 16WV	
C335	FLJ1H471A034	Ceramic, 470PF 50WV	
C336	YECUS1C224KX	Ceramic, 0.22μF 16WV	
C337	FLJ1C6830001	Ceramic, 0.068μF 16WV	
C338	FLJ1C6830001	Ceramic, 0.068μF 16WV	
C339	FLJ1H103A509	Ceramic, 0.01μF 50WV	
C340	FLK1C105A026	Ceramic, 1μF 16WV	
C341	FLK1C105A026	Ceramic, 1μF 16WV	
C349	FLJ1H183A035	Ceramic, 0.018μF 50WV	
C350	FLJ1H1230002	Ceramic, 0.012μF 50WV	
C351	FLJ1H390A034	Ceramic, 39PF 50WV	
C352	ECEA1HKS2R2I	Electrolytic, 2.2μF 50WV	
C353	ECEA1HKS2R2I	Electrolytic, 2.2μF 50WV	
C355	FLJ1H152A509	Ceramic, 1500PF 50WV	
C360	FLJ1E4730003	Ceramic, 0.047μF 25WV	
C361	FLK1E333A019	Ceramic, 0.033μF 25WV	
C363	FLJ1H822A509	Ceramic, 8200PF 50WV	
C364	FLJ1C104A005	Ceramic, 0.1μF 16WV	
C371	FLJ1H390A034	Ceramic, 39PF 50WV	
C372	ECEA1HKS2R2I	Electrolytic, 2.2μF 50WV	
C373	ECEA1HKS47I	Electrolytic, 0.47μF 50WV	
C374	FLJ1H682A509	Ceramic, 6800PF 50WV	
C391	ECEA1HKS2R2I	Electrolytic, 2.2μF 50WV	
C392	FLJ1H560A034	Ceramic, 56PF 50WV	
C393	ECEA1HKS2R2I	Electrolytic, 2.2μF 50WV	
C394	FLJ1H560A034	Ceramic, 56PF 50WV	
C395	ECEA1HKS010I	Electrolytic, 1μF 50WV	
C399	FLJ1H102A509	Ceramic, 1000PF 50WV	
C600	FLJ1C104A005	Ceramic, 0.1μF 16WV	
C601	FLJ1H103A509	Ceramic, 0.01μF 50WV	
C602	ECEA0JKS331I	Electrolytic, 330μF 6.3WV	
C609	ECEA0JKS331I	Electrolytic, 330μF 6.3WV	
C610	YECUV1C104KX	Ceramic, 0.1μF 16WV	
C611	FLJ1H103A509	Ceramic, 0.01μF 50WV	
C612	FLJ1C104A005	Ceramic, 0.1μF 16WV	
C613	FLJ1C104A005	Ceramic, 0.1μF 16WV	
C614	FLJ1C104A005	Ceramic, 0.1μF 16WV	
C615	FLJ1C104A005	Ceramic, 0.1μF 16WV	
C618	FLJ1H331A034	Ceramic, 330PF 50WV	
C619	FLJ1H150A034	Ceramic, 15PF 50WV	
C620	FLJ1H150A034	Ceramic, 15PF 50WV	
C621	FLJ1H103A509	Ceramic, 0.01μF 50WV	
C622	ECEA1ESN4R7I	Electrolytic, 4.7μF 25WV	
C623	FLJ1H103A509	Ceramic, 0.01μF 50WV	
C624	ECEA0JKS101I	Electrolytic, 100μF 6.3WV	
C625	FLJ1H103A509	Ceramic, 0.01μF 50WV	
C626	FLJ1H820A034	Ceramic, 82PF 50WV	
C627	FLJ1H820A034	Ceramic, 82PF 50WV	
C630	FLJ1H180A025	Ceramic, 18PF 50WV	
C631	FLJ1H270A025	Ceramic, 27PF 50WV	
C632	FLJ1H103A509	Ceramic, 0.01μF 50WV	
C634	FLK2A103A001	Ceramic, 0.01μF 100WV	
C635	FLK2A103A001	Ceramic, 0.01μF 100WV	
C636	FLJ1H103A509	Ceramic, 0.01μF 50WV	
C641	FLJ1H300A025	Ceramic, 30PF 50WV	
C642	FLJ1H300A025	Ceramic, 30PF 50WV	
C651	F4D551030001	Electrolytic, 0.01F 5.5WV	
C701	ECEA1CKS101I	Electrolytic, 100μF 16WV	
C703	FLJ1H221A034	Ceramic, 220PF 50WV	
C705	FLJ1H103A509	Ceramic, 0.01μF 50WV	
C706	FLJ1C104A005	Ceramic, 0.1μF 16WV	
C707	ECEA1EKS4R7I	Electrolytic, 4.7μF 25WV	



Ref. No.	Part No.	Part Name & Description	Remarks
R323	ERJ6GEYJ683	Chip, 68kΩ 1/10W	
R324	ERJ6GEYJ104	Chip, 100kΩ 1/10W	
R325	ERJ6GEYJ154	Chip, 150kΩ 1/10W	
R326	ERJ6GEYJ184	Chip, 180kΩ 1/10W	
R328	ERJ6GEYJ472	Chip, 4.7kΩ 1/10W	
R329	ERJ6GEYJ223	Chip, 22kΩ 1/10W	
R330	ERJ6GEYJ272	Chip, 2.7kΩ 1/10W	
R331	ERJ6GEYJ682	Chip, 6.8kΩ 1/10W	
R332	ERJ6GEYJ123	Chip, 12kΩ 1/10W	
R335	ERJ6GEYJ102	Chip, 1kΩ 1/10W	
R336	ERJ6GEYJ822	Chip, 8.2kΩ 1/10W	
R337	ERJ6GEYJ332	Chip, 3.3kΩ 1/10W	
R338	ERJ6GEYJ682	Chip, 6.8kΩ 1/10W	
R339	ERJ6GEYJ102	Chip, 1kΩ 1/10W	
R340	ERJ6GEYJ682	Chip, 6.8kΩ 1/10W	
R351	ERJ6GEYJ392	Chip, 3.9kΩ 1/10W	
R352	ERJ6GEYJ123	Chip, 12kΩ 1/10W	
R353	ERJ6GEYJ393	Chip, 39kΩ 1/10W	
R356	ERJ6GEYJ822	Chip, 8.2kΩ 1/10W	
R357	ERJ6GEYJ332	Chip, 3.3kΩ 1/10W	
R358	ERJ6GEYJ682	Chip, 6.8kΩ 1/10W	
R359	ERJ6GEYJ102	Chip, 1kΩ 1/10W	
R360	ERJ6GEYJ123	Chip, 12kΩ 1/10W	
R391	ERJ6GEYJ272	Chip, 2.7kΩ 1/10W	
R393	ERJ6GEYJ123	Chip, 12kΩ 1/10W	
R394	ERJ6GEYJ562	Chip, 5.6kΩ 1/10W	
R395	ERJ6GEYJ153	Chip, 15kΩ 1/10W	
R396	ERJ6GEYJ562	Chip, 5.6kΩ 1/10W	
R397	ERJ6GEYJ222	Chip, 2.2kΩ 1/10W	
R398	ERJ6GEYJ473	Chip, 47kΩ 1/10W	
R399	ERJ6GEYJ823	Chip, 82kΩ 1/10W	
R600	ERJ6GEYJ102	Chip, 1kΩ 1/10W	
R601	ERJ6GEYJ102	Chip, 1kΩ 1/10W	
R602	ERJ6GEYJ102	Chip, 1kΩ 1/10W	
R603	ERJ6GEYJ102	Chip, 1kΩ 1/10W	
R605	ERJ6GEYJ102	Chip, 1kΩ 1/10W	
R606	ERJ6GEYJ102	Chip, 1kΩ 1/10W	
R607	ERJ6GEYJ102	Chip, 1kΩ 1/10W	
R608	ERJ6GEYJ102	Chip, 1kΩ 1/10W	
R609	ERJ6GEYJ102	Chip, 1kΩ 1/10W	
R610	ERJ6GEYJ102	Chip, 1kΩ 1/10W	
R611	ERJ6GEYJ102	Chip, 1kΩ 1/10W	
R612	ERJ6GEYJ102	Chip, 1kΩ 1/10W	
R613	ERJ6GEYJ472	Chip, 4.7kΩ 1/10W	
R614	ERJ6GEYJ102	Chip, 1kΩ 1/10W	
R615	ERJ6GEYJ473	Chip, 47kΩ 1/10W	
R617	ERJ6GEYJ562	Chip, 5.6kΩ 1/10W	
R618	ERJ6GEYJ182	Chip, 1.8kΩ 1/10W	
R619	ERJ6GEYJ102	Chip, 1kΩ 1/10W	
R621	ERJ6GEYJ102	Chip, 1kΩ 1/10W	
R622	ERJ6GEYJ470	Chip, 47Ω 1/10W	
R623	ERJ6GEYJ473	Chip, 47kΩ 1/10W	
R624	ERJ6GEYJ473	Chip, 47kΩ 1/10W	
R625	ERJ6GEYJ473	Chip, 47kΩ 1/10W	
R628	ERJ6GEYJ102	Chip, 1kΩ 1/10W	
R629	ERJ6GEYJ102	Chip, 1kΩ 1/10W	
R631	ERJ6GEYJ472	Chip, 4.7kΩ 1/10W	
R632	ERJ6GEYJ103	Chip, 10kΩ 1/10W	
R633	ERJ6GEYJ103	Chip, 10kΩ 1/10W	
R634	ERJ6GEYJ102	Chip, 1kΩ 1/10W	
R635	ERJ6GEYJ473	Chip, 47kΩ 1/10W	
R636	ERJ6GEYJ104	Chip, 100kΩ 1/10W	
R637	ERJ6GEYJ222	Chip, 2.2kΩ 1/10W	
R638	ERJ6GEYJ473	Chip, 47kΩ 1/10W	
R639	ERJ6GEYJ473	Chip, 47kΩ 1/10W	
R640	ERJ6GEYJ104	Chip, 100kΩ 1/10W	
R641	ERJ6GEYJ103	Chip, 10kΩ 1/10W	
R642	ERJ6GEYJ103	Chip, 10kΩ 1/10W	
R643	ERJ6GEYJ223	Chip, 22kΩ 1/10W	
R644	ERJ6GEYJ223	Chip, 22kΩ 1/10W	
R645	ERJ6GEYJ221	Chip, 22Ω 1/10W	
R646	ERJ6GEYJ103	Chip, 10kΩ 1/10W	
R647	ERJ6GEYJ472	Chip, 4.7kΩ 1/10W	

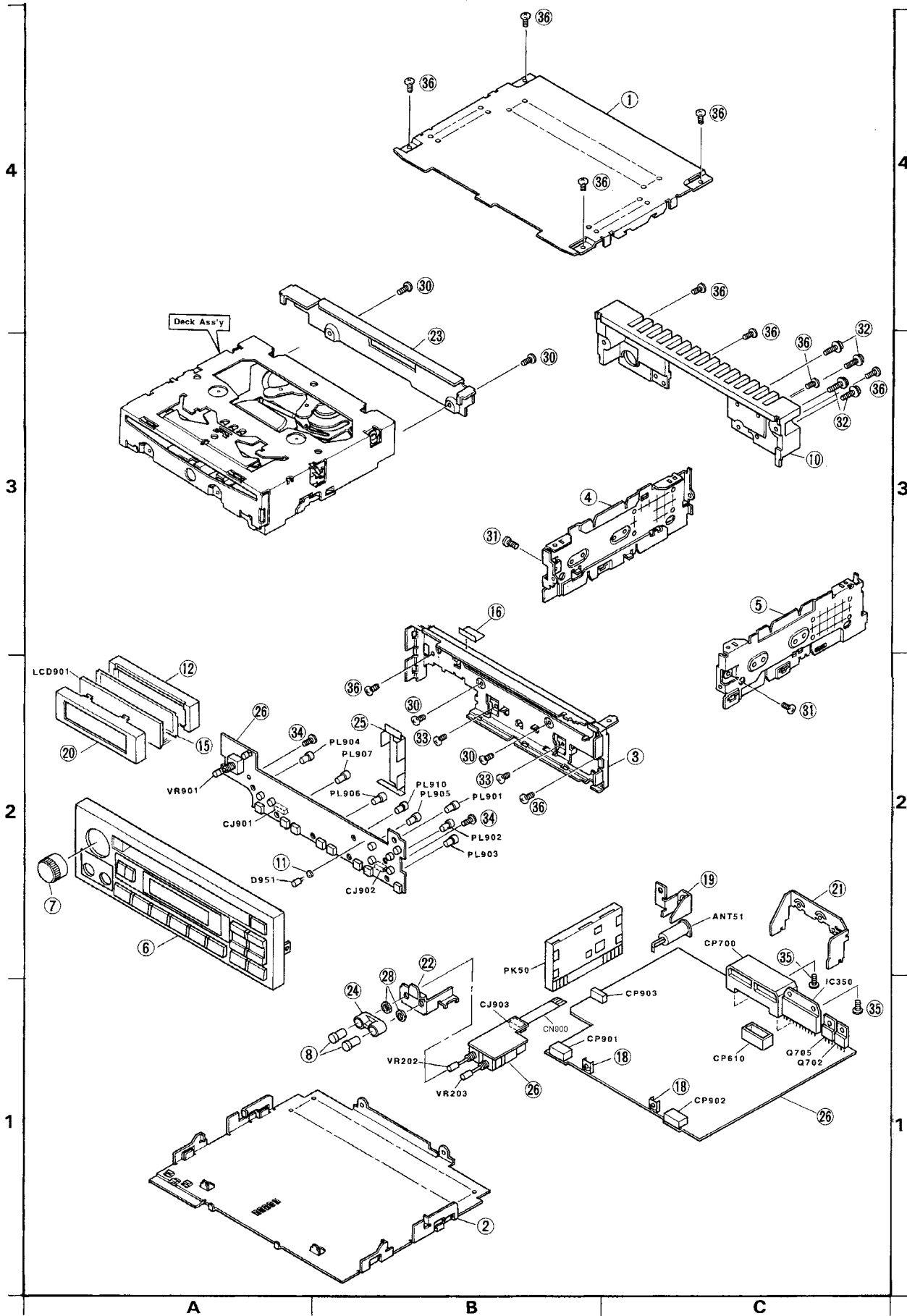
Ref. No.	Part No.	Part Name & Description	Remarks
R648	ERJ6GEYJ393	Chip, 39kΩ 1/10W	
R649	ERJ6GEYJ152	Chip, 1.5kΩ 1/10W	
R650	ERJ6GEYJ152	Chip, 1.5kΩ 1/10W	
R651	ERJ6GEYJ152	Chip, 1.5kΩ 1/10W	
R652	ERJ6GEY0R00	Chip, 0Ω 1/10W	
R653	ERJ6GEY0R00	Chip, 0Ω 1/10W	
R654	ERJ6GEY0R00	Chip, 0Ω 1/10W	
R655	ERJ6GEYJ102	Chip, 1kΩ 1/10W	
R656	ERJ6GEYJ222	Chip, 2.2kΩ 1/10W	
R657	ERJ6GEYJ473	Chip, 47kΩ 1/10W	
R658	ERJ6GEYJ564	Chip, 560kΩ 1/10W	
R659	ERJ6GEYJ102	Chip, 1kΩ 1/10W	
R661	ERJ6GEY0R00	Chip, 0Ω 1/10W	
R662	ERJ6GEYJ473	Chip, 47kΩ 1/10W	
R663	ERJ6GEYJ473	Chip, 47kΩ 1/10W	
R664	ERJ8GEYJ104V	Chip, 100kΩ 1/8W	
R665	ERJ6GEYJ102	Chip, 1kΩ 1/10W	
R666	ERJ6GEYJ102	Chip, 1kΩ 1/10W	
R667	ERJ6GEYJ102	Chip, 1kΩ 1/10W	
R668	ERJ6GEYJ102	Chip, 1kΩ 1/10W	
R670	ERJ8GEYJ271V	Chip, 270Ω 1/8W	
R671	ERJ6GEYJ102	Chip, 1kΩ 1/10W	
R672	ERJ6GEYJ152	Chip, 1.5kΩ 1/10W	
R673	ERJ6GEYJ102	Chip, 1kΩ 1/10W	
R677	ERJ6GEYJ102	Chip, 1kΩ 1/10W	
R678	ERJ6GEYJ102	Chip, 1kΩ 1/10W	
R681	ERJ6GEYJ102	Chip, 1kΩ 1/10W	
R682	ERJ6GEYJ102	Chip, 1kΩ 1/10W	
R683	ERJ6GEYJ102	Chip, 1kΩ 1/10W	
R684	ERJ6GEYJ103	Chip, 10kΩ 1/10W	
R685	ERJ6GEYJ103	Chip, 10kΩ 1/10W	
R686	ERJ6GEYJ103	Chip, 10kΩ 1/10W	
R687	ERJ6GEYJ103	Chip, 10kΩ 1/10W	
R688	ERJ6GEYJ102	Chip, 1kΩ 1/10W	
R691	ERJ6GEYJ102	Chip, 1kΩ 1/10W	
R692	ERJ6GEYJ102	Chip, 1kΩ 1/10W	
R693	ERJ6GEYJ472	Chip, 4.7kΩ 1/10W	
R694	ERJ6GEYJ472	Chip, 4.7kΩ 1/10W	
R695	ERJ6GEYJ393	Chip, 39kΩ 1/10W	
R696	ERJ6GEYJ392	Chip, 3.9kΩ 1/10W	
R697	ERJ6GEYJ123	Chip, 12kΩ 1/10W	
R698	ERJ6GEYJ102	Chip, 1kΩ 1/10W	
R701	ERJ6GEYJ473	Chip, 47kΩ 1/10W	
R702	ERJ6GEYJ182	Chip, 1.8kΩ 1/10W	
R703	ERJ6GEYJ122	Chip, 1.2kΩ 1/10W	
R704	ERJ6GEYJ273	Chip, 27kΩ 1/10W	
R705	ERJ6GEYJ123	Chip, 12kΩ 1/10W	
R706	ERJ6GEYJ472	Chip, 4.7kΩ 1/10W	
R707	ERJ6GEYJ472	Chip, 4.7kΩ 1/10W	
R708	ERJ8GEYJ821V	Chip, 820Ω 1/8W	
R710	ERJ8GEYJ820V	Chip, 82Ω 1/8W	
R711	ERJ8GEYJ821V	Chip, 820Ω 1/8W	
R712	ERJ6GEYJ473	Chip, 47kΩ 1/10W	
R713	ERJ8GEYJ102V	Chip, 1kΩ 1/8W	
R714	ERJ6GEYJ104	Chip, 100kΩ 1/10W	
R715	ERJ6GEYJ683	Chip, 68kΩ 1/10W	
R720	ERJ6GEYJ124	Chip, 120kΩ 1/10W	
R721	ERJ6GEYJ123	Chip, 12kΩ 1/10W	
R722	ERJ6GEYJ912	Chip, 9.1kΩ 1/10W	
R723	ERJ6GEYJ223	Chip, 22kΩ 1/10W	
R729	ERJ6GEYJ472	Chip, 4.7kΩ 1/10W	
R731	ERJ6GEYJ103	Chip, 10kΩ 1/10W	
R732	ERJ6GEYJ123	Chip, 12kΩ 1/10W	
R733	ERJ6GEYJ563	Chip, 56kΩ 1/10W	
R734	ERJ6GEYJ471	Chip, 470Ω 1/10W	
R740	ERJ8GEYJ331V	Chip, 330Ω 1/8W	
R741	ERJ8GEYJ331V	Chip, 330Ω 1/8W	
R742	ERJ6GEYJ562	Chip, 5.6kΩ 1/10W	
R743	ERJ6GEYJ222	Chip, 2.2kΩ 1/10W	
R751	ERJ8GEYJ392V	Chip, 3.9kΩ 1/8W	
R752	ERJ8GEYJ392V	Chip, 3.9kΩ 1/8W	
R753	ERJ6GEYJ223	Chip, 22kΩ 1/10W	
R754	ERJ6GEYJ472	Chip, 4.7kΩ 1/10W	



Ref. No.	Part No.	Part Name & Description	Remarks
R755	ERJ6GEYJ472	Chip, 4.7k $\Omega$ 1/10W	
R756	ERJ6GEYJ102	Chip, 1k $\Omega$ 1/10W	
R757	ERJ6GEYJ472	Chip, 4.7k $\Omega$ 1/10W	
R758	ERJ6GEYJ102	Chip, 1k $\Omega$ 1/10W	
R759	ERJ6GEYJ473	Chip, 47k $\Omega$ 1/10W	
R762	ERJ6GEYJ562	Chip, 5.6k $\Omega$ 1/10W	
R763	ERJ6GEYJ222	Chip, 2.2k $\Omega$ 1/10W	
R772	ERJ6GEYOR00	Chip, 0 $\Omega$ 1/10W	
R781	ERJ8GEYJ272V	Chip, 2.7k $\Omega$ 1/8W	
R782	ERJ8GEYJ272V	Chip, 2.7k $\Omega$ 1/8W	
R783	ERJ8GEYJ272V	Chip, 2.7k $\Omega$ 1/8W	
R784	ERJ8GEYJ272V	Chip, 2.7k $\Omega$ 1/8W	
R787	ERJ6GEYOR00	Chip, 0 $\Omega$ 1/10W	
R791	ERJ6GEYJ103	Chip, 10k $\Omega$ 1/10W	
R792	ERJ6GEYJ473	Chip, 47k $\Omega$ 1/10W	
R801	ERJ8GEYJ470V	Chip, 47 $\Omega$ 1/8W	
R802	ERJ8GEYJ470V	Chip, 47 $\Omega$ 1/8W	
R803	ERJ8GEYJ470V	Chip, 47 $\Omega$ 1/8W	
R804	ERJ8GEYJ470V	Chip, 47 $\Omega$ 1/8W	
R811	ERJ8GEYJ3R3V	Chip, 3.3 $\Omega$ 1/8W	
R812	ERJ8GEYJ3R3V	Chip, 3.3 $\Omega$ 1/8W	
R813	ERJ8GEYJ4R7V	Chip, 4.7 $\Omega$ 1/8W	
R814	ERJ8GEYJ4R7V	Chip, 4.7 $\Omega$ 1/8W	
R951	ERJ8GEYJ221V	Chip, 220 $\Omega$ 1/8W	
R952	ERJ8GEYJ122V	Chip, 1.2k $\Omega$ 1/8W	
R953	ERJ8GEYJ271V	Chip, 270 $\Omega$ 1/8W	
R954	ERJ6GEYJ103	Chip, 10k $\Omega$ 1/10W	
R955	ERJ6GEYJ103	Chip, 10k $\Omega$ 1/10W	
R956	ERJ6GEYJ472	Chip, 4.7k $\Omega$ 1/10W	
R957	ERJ6GEYJ683	Chip, 68k $\Omega$ 1/10W	
R960	ERJ8GEYJ122V	Chip, 1.2k $\Omega$ 1/8W	
<b>CONNECTORS</b>			
CJ901	K1KB08A00038	Connector, 8P	
CJ902	K1KB08A00038	Connector, 8P	
CJ903	K1MN06B00001	Connector, 6P	
CP610	K1KA14A00007	Connector, 14P	
CP700	K1KA34B00030	Connector, 20P	
CP901	K1KA08B00189	Connector, 8P	
CP902	K1KA08B00189	Connector, 8P	
CP903	K1MN06A00014	Connector, 6P	
<b>SWITCHES</b>			
SW901	EVQPVF05K	Switch	
SW902	EVQPVF05K	Switch	
SW903	EVQPVF05K	Switch	
SW904	KOH1BA000294	Switch	
SW905	KOH1BA000294	Switch	
SW906	KOH1BA000294	Switch	
SW908	KOH1BA000294	Switch	
SW909	KOH1BA000294	Switch	
SW910	KOH1BA000294	Switch	
SW912	EVQPVF05K	Switch	
SW913	EVQPVF05K	Switch	
SW915	EVQPVF05K	Switch	
SW916	EVQPVF05K	Switch	
SW917	KOH1BA000294	Switch	
SW918	KOH1BA000294	Switch	
<b>LCD</b>			
LCD901	L5AAAAGC00001	LCD	
<b>COILS</b>			
L51	G1C1R8J00003	Coil	
L52	G1CR82J00002	Coil	
L53	G1C1R0J00003	Coil	
L600	G1C330J00002	Coil	
L601	ELEAH330KA	Coil	
L602	G1C330J00002	Coil	
L605	G1C330J00002	Coil	

Ref. No.	Part No.	Part Name & Description	Remarks
L700	G0A111J00001	Coil	
L716	G1C330J00002	Coil	
<b>CRYSTALS</b>			
XL601	H2A419400004	Crystal	
XL602	H0D720400003	Crystal	
XL603	H0J327200005	Crystal	
<b>LAMPS</b>			
PL901-907	YEALHSIB015	Pilot Lamp	
PL908	YEALSTGB047	Pilot Lamp	
PL910	YEALHSIB015	Pilot Lamp	
Z51	J0LE00000004	Neon Lamp	
Z700	J0HACJ000001	Neon Lamp	
<b>VARIABLE RESISTORS</b>			
VR202	D2BCD54B0004	Variablr resistor	
VR203	D2BCD54B0004	Variablr resistor	
VR901	EVQBAS00415B	Variablr resistor	
<b>THERMISTER</b>			
R700	YERTU160T	Thermister	
<b>Accessories</b>			
<b>PRINTINGS</b>			
	M1A406015	Anti Theft Card Kit, French/English	A
	M1A429025	Anti Theft Card Kit, USA w/NAVI	B
<b>Mechanical Parts</b>			
<b>MISCELLANEOUS</b>			
ANT51	YEAA10066	Antenna Receptacle	
CN900	YEA011519	FPC, 6P	
1	M4G429018	Upper Cover	MCC
2	M4G429019	Bottom Cover	MCC
3	M4G429014	Front Plate	MCC
4	M3G429016	Side Plate (L)	MCC
5	M3G429017	Side Plate (R)	MCC
6	YGF0C025784C	ESC Ass'y	
7	YEF02293	Knob, VOL	
8	YEF03072	Knob, TONE	
10	M4F429020A	Heat Sink	MCC
11	YEFK06811	Holder	
12	YEFK06824A	Holder, LCD	
15	YEFV021563	Diffuser, LCD	
16	YEFV021610	Off Light Sheet	
18	M1G415051	Fixture, Earth	MCC
19	M2G429011	Bracket, ANT	MCC
20	YEFX0214505	LCD Case	
21	M2G429013	Bracket, IC	MCC
22	M2G429012	Bracket, VOL	MCC
23	M4G429015	Bracket, Deck	MCC
24	YEFX9991915	VOL Spacer	
25	YEFX9992014	Spacer	
26	ZZ29001RP1	PCB w/Component	RTL, MCC
28	YEJN01099	Nut	
30	YEJT03131	Screw, M2.6x5mm	
31	YEJT03015	Screw, M3x6mm	
32	YEJT03008	Screw, M3x10mm	
33	XSB26+6FX	Screw, M2.6x6mm	
34	XTB2+6GFX	Screw, M2x6mm	
35	XTB3+6GFN	Screw, M3x6mm	
36	XTB3+8FFX	Screw, M3x8mm	

# 11 EXPLODED VIEW (Unit)



# 12 CD Player Parts

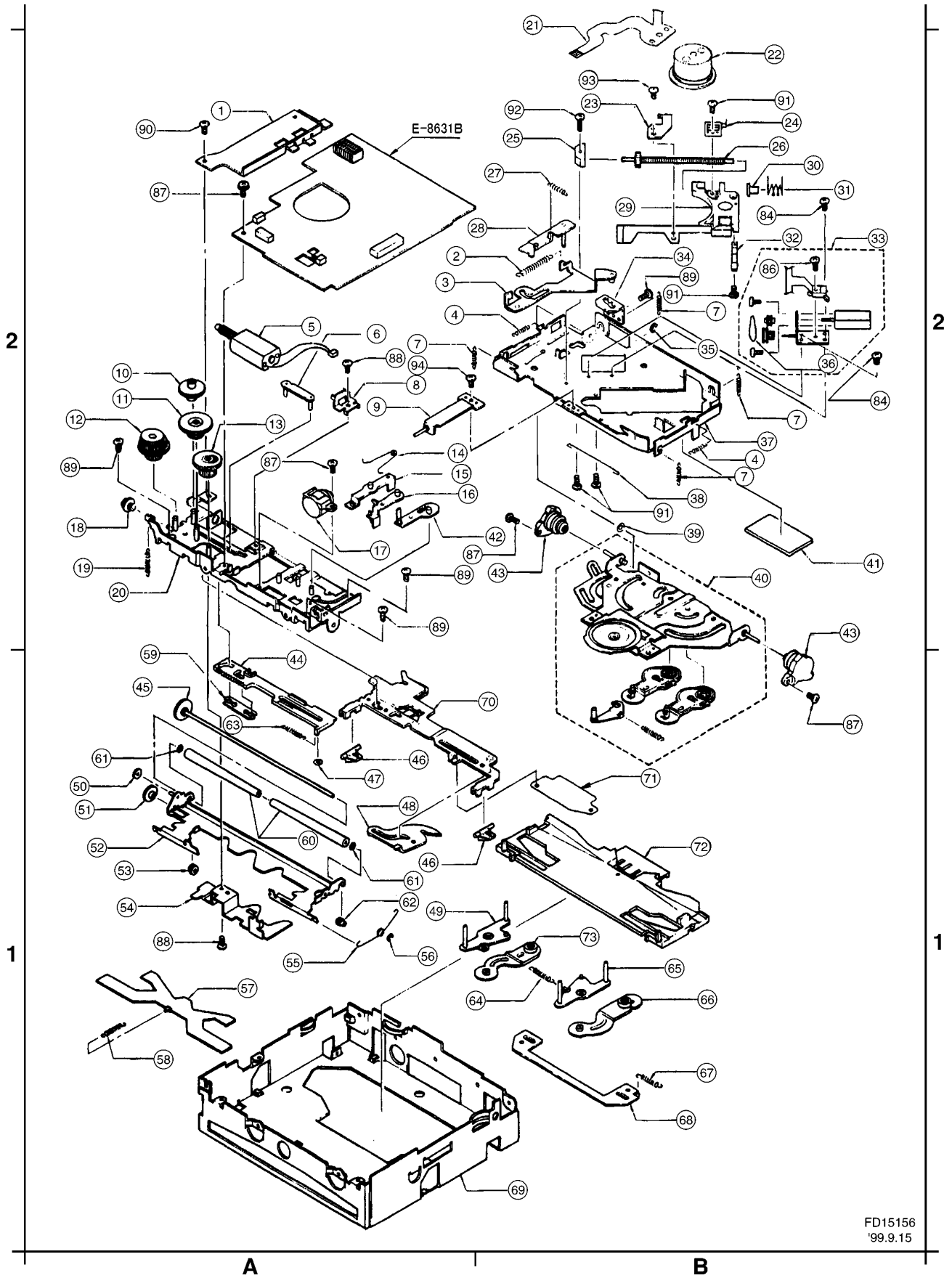
Ref. No.	Part No.	Part Name & Description	Remarks
CD Servo Block [E8631B]			
IC's and TRANSISTORS			
IC101	AN8845SB-E1	IC	
IC401	MN662748RPMF	IC	
IC451	MN101C427AE1	IC	
IC901	AN8735NSB-E1	IC	
IC951	AN8780SB-E1	IC	
Q101	2SB766ATX	Transistor	
DIODES			
D451	MA151WKTX	Diode	
PS1	ON1004	Diode	
PS3	ON1004	Diode	
CAPACITORS			
C101	YECUS1C104KX	Ceramic, 0.1 $\mu$ F 16WV	
C102	YECUS1C104KX	Ceramic, 0.1 $\mu$ F 16WV	
C103	YECUS1C104KX	Ceramic, 0.1 $\mu$ F 16WV	
C104	F3H0J1070005	Tantalum, 100 $\mu$ F 6.3WV	
C105	YECUS1H390JM	Ceramic, 39PF 50WV	
C107	YECUS1E273KX	Ceramic, 0.027 $\mu$ F 25WV	
C108	YECUV1H102JC	Ceramic, 1000PF 50WV	
C109	YECUS1A105KX	Ceramic, 1 $\mu$ F 10WV	
C110	YECUS1A105KX	Ceramic, 1 $\mu$ F 10WV	
C111	YECUS1E273KX	Ceramic, 0.027 $\mu$ F 25WV	
C112	YECUS1H472KX	Ceramic, 4700PF 50WV	
C113	FLJ1H222A508	Ceramic, 2200PF 50WV	
C114	YECUS1C104KX	Ceramic, 0.1 $\mu$ F 16WV	
C115	ECEH0JVC470F	Electrolytic, 47 $\mu$ F 6.3WV	
C116	FLJ1H102A034	Ceramic, 1000PF 50WV	
C117	YECUV1H102JC	Ceramic, 1 $\mu$ F 10WV	
C118	YECUS1H391JM	Ceramic, 390PF 50WV	
C119	YECUS1H391JM	Ceramic, 390PF 50WV	
C120	YECUV1C104KX	Ceramic, 0.1 $\mu$ F 16WV	
C121	YECUS1C104KX	Ceramic, 0.1 $\mu$ F 16WV	
C122	YECUS1C334KX	Ceramic, 0.33 $\mu$ F 16WV	
C123	YECUS1H272KX	Ceramic, 2700PF 50WV	
C124	YECUS1H272KX	Ceramic, 2700PF 50WV	
C125	FLJ1H102A034	Ceramic, 1000PF 50WV	
C126	YECUS1H150JC	Ceramic, 15PF 50WV	
C127	YECUS1H150JC	Ceramic, 15PF 50WV	
C401	YECUS1C104KX	Ceramic, 0.1 $\mu$ F 16WV	
C402	YECUS1C104KX	Ceramic, 0.1 $\mu$ F 16WV	
C403	ECEH0JV101F	Electrolytic, 100 $\mu$ F 6.3WV	
C405	YECUV2A123KX	Ceramic, 0.012 $\mu$ F 100WV	
C406	FIL1C334A003	Ceramic, 0.33 $\mu$ F 16WV	
C408	EEFCD0K8R2R	Electrolytic, 8.2 $\mu$ F 8WV	
C409	YECUS1C104KX	Ceramic, 0.1 $\mu$ F 16WV	
C410	YECUS1C334KX	Ceramic, 0.33 $\mu$ F 16WV	
C411	YECUS1C104KX	Ceramic, 0.1 $\mu$ F 16WV	
C451	YECUS1C104KX	Ceramic, 0.1 $\mu$ F 16WV	
C452	ECEH0JVC470F	Electrolytic, 47 $\mu$ F 6.3WV	
C453	YECUS1H103KX	Ceramic, 0.01 $\mu$ F 50WV	
C454	YECUS1C104KX	Ceramic, 0.1 $\mu$ F 16WV	
C455	YECUS1H150JC	Ceramic, 15PF 50WV	
C901	YECUS1E333KX	Ceramic, 0.033 $\mu$ F 25WV	
C902	ECEH1CVC220F	Electrolytic, 22 $\mu$ F 16WV	
C903	YECUS1C104KX	Ceramic, 0.1 $\mu$ F 16WV	
C904	YECUV1C104KX	Ceramic, 0.1 $\mu$ F 16WV	
C906	YECUS1H150JC	Ceramic, 15PF 50WV	
C951	YECUS1C474KX	Ceramic, 0.47 $\mu$ F 16WV	
C952	ECEH1CVC220F	Electrolytic, 22 $\mu$ F 16WV	
C953	YECUS1C104KX	Ceramic, 0.1 $\mu$ F 16WV	
C954	YECUS1C104KX	Ceramic, 0.1 $\mu$ F 16WV	

Ref. No.	Part No.	Part Name & Description	Remarks
RESISTORS			
R101	ERJ8GEYJ101V	Chip, 100 $\Omega$ 1/8W	
R102	ERJ14YJ330H	Chip, 33 $\Omega$ 1/4W	
R103	ERJ8GEYJ472V	Chip, 4.7k $\Omega$ 1/8W	
R106	ERJ6GEYJ272	Chip, 2.7k $\Omega$ 1/10W	
R107	ERJ6GEYJ182	Chip, 1.8k $\Omega$ 1/10W	
R108	ERJ6GEYJ222	Chip, 2.2k $\Omega$ 1/10W	
R109	ERJ6GEYJ472	Chip, 4.7k $\Omega$ 1/10W	
R110	ERJ6GEYJ472	Chip, 4.7k $\Omega$ 1/10W	
R111	ERJ8GEYJ683V	Chip, 68k $\Omega$ 1/8W	
R112	ERJ8GEYJ683V	Chip, 68k $\Omega$ 1/8W	
R113	ERJ8GEYJ224V	Chip, 220k $\Omega$ 1/8W	
R114	ERJ8GEYJ823V	Chip, 82k $\Omega$ 1/8W	
R115	ERJ6GEYJ393	Chip, 39k $\Omega$ 1/10W	
R116	ERJ6GEYJ563	Chip, 56k $\Omega$ 1/10W	
R118	ERJ6GEYJ183	Chip, 18k $\Omega$ 1/10W	
R119	ERJ6GEYJ103	Chip, 10k $\Omega$ 1/10W	
R120	ERJ8GEYJ103V	Chip, 10k $\Omega$ 1/8W	
R121	ERJ8GEYJ102V	Chip, 1k $\Omega$ 1/8W	
R122	ERJ8GEYJ102V	Chip, 1k $\Omega$ 1/8W	
R123	ERJ6GEYJ184	Chip, 180k $\Omega$ 1/10W	
R124	ERJ8GEYJ563V	Chip, 56k $\Omega$ 1/8W	
R401	ERJ6GEYJ472	Chip, 4.7k $\Omega$ 1/10W	
R402	ERJ6GEYJ472	Chip, 4.7k $\Omega$ 1/10W	
R403	ERJ8GEYJ472V	Chip, 4.7k $\Omega$ 1/8W	
R404	ERJ8GEYJ472V	Chip, 4.7k $\Omega$ 1/8W	
R405	ERJ8GEYJ472V	Chip, 4.7k $\Omega$ 1/8W	
R406	ERJ8GEYJ472V	Chip, 4.7k $\Omega$ 1/8W	
R407	ERJ6GEYJ470	Chip, 47 $\Omega$ 1/10W	
R408	ERJ6GEYJ473	Chip, 47k $\Omega$ 1/10W	
R409	ERJ6GEYJ154	Chip, 150k $\Omega$ 1/10W	
R410	ERJ8GEYJ105V	Chip, 1M $\Omega$ 1/8W	
R411	ERJ6GEYJ561	Chip, 560 $\Omega$ 1/10W	
R412	ERJ8GEYJ473V	Chip, 47k $\Omega$ 1/8W	
R413	ERJ8GEYJ473V	Chip, 47k $\Omega$ 1/8W	
R414	ERJ6GEYJ272	Chip, 2.7k $\Omega$ 1/10W	
R415	ERJ8GEYJ334V	Chip, 330k $\Omega$ 1/8W	
R416	ERJ6GEYJ473	Chip, 47k $\Omega$ 1/10W	
R451	ERJ8GEYJ472V	Chip, 4.7k $\Omega$ 1/8W	
R452	ERJ6GEYJ473	Chip, 47k $\Omega$ 1/10W	
R453	ERJ8GEYJ563V	Chip, 56k $\Omega$ 1/8W	
R454	ERJ6GEYJ472	Chip, 4.7k $\Omega$ 1/10W	
R455	ERJ6GEYJ472	Chip, 4.7k $\Omega$ 1/10W	
R457	ERJ6GEYJ472	Chip, 4.7k $\Omega$ 1/10W	
R458	ERJ6GEYJ473	Chip, 47k $\Omega$ 1/10W	
R459	ERJ6GEYJ473	Chip, 47k $\Omega$ 1/10W	
R460	ERJ6GEYJ472	Chip, 4.7k $\Omega$ 1/10W	
R461	ERJ6GEYJ563	Chip, 56k $\Omega$ 1/10W	
R462	ERJ6GEYJ221	Chip, 220 $\Omega$ 1/10W	
R463	ERJ8GEYJ472V	Chip, 4.7k $\Omega$ 1/8W	
R901	ERJ6GEYJ333	Chip, 33k $\Omega$ 1/10W	
R902	ERJ6GEYJ103	Chip, 10k $\Omega$ 1/10W	
R903	ERJ8GEYJ563V	Chip, 56k $\Omega$ 1/8W	
R904	ERJ8GEYJ332V	Chip, 3.3k $\Omega$ 1/8W	
R951	ERJ8GEYJ124V	Chip, 120k $\Omega$ 1/8W	
R952	ERJ8GEYJ684V	Chip, 680k $\Omega$ 1/8W	
R953	ERJ6GEYJ183	Chip, 18k $\Omega$ 1/10W	
R954	ERJ8GEYJ183V	Chip, 18k $\Omega$ 1/8W	
R955	ERJ8GEYJ822V	Chip, 8.2k $\Omega$ 1/8W	
R956	ERJ6GEYJ682	Chip, 6.8k $\Omega$ 1/10W	
CONNECTORS			
CN101	YEAE5220715	Connector, 15P	
CN401	YEAE0114TKCR	Connector, 14P	
CN901	YEAE5227106	Connector, 6P	
CN902	YEAE5326102	Connector, 2P	
SWITCHE			
SW2	YEAS09248R	Push Switch	

Ref. No.	Part No.	Part Name & Description	Remarks
CRYSTALS			
XL401	YEXLCSTC169T	Crystal OSC	
XL451	YEXLSTCC419T	Crystal OSC	
COIL			
L101	YELTLM41P750	Coil	
FILTERS			
L401	J0JCC0000048	Filter	
L451	J0JCC0000048	Filter	
L901	J0JCC0000048	Filter	
Miscellaneous			
TP1	YEATSD00405	Terminal	
1	YEFX018497A	PCB Holder	
2	YEFX0052000B	Clamper Arm Spring	
3	YEFX0461883A	Clamper Lever Ass'y	
4	YEFX0052107	Suspension Spring	
5	YEP0FX2519	Loding Motor Ass'y	
6	YEFX0461879A	Joint Lever Ass'y	
7	YEFX0051996	Suspension Spring	
8	YEFX0051997B	Loding Motor Spring	
9	YEFX018435	Dumper Bracket	
10	YEFX003732A	Clamper Gear (1)	
11	YEFX003733	Clamper Gear (2)	
12	YEFX003741B	Loding Gear (1)	
13	YEFX003842	Clamper Gear (3)	
14	YEFX0051988C	Switch Lever Spring	
15	YEFX0461662B	OUT Switch Lever	
16	YEFX0461660A	IN Switch Lever	
17	YEFX04625	Dumper (A)	
18	YEFX003742B	Loding Gear (2)	
19	YEFX0051986	Feeder Arm Spring (1)	
20	YEFA011537K	Front Chassis	
21	YEAP2509A	Flat Cable	
22	YEP0FX3498	Spindle Motor Ass'y	
23	YEFX9991458A	FPC Holder	
24	YEFX9991406B	Feed Screw Holder	
25	YEFW04150	Shaft Holder (A)	
26	YEJT03211	Feed Screw Ass'y	
27	YEFX0051998	Change Lever (A) Spring	
28	YEFX0461876A	Change Lever (A) Ass'y	
29	YESSZ3260S	Optical Pick-up Ass'y	
30	YEFW04137A	Shaft Holder (B)	
31	YEFX0051992	Thrust Adjustment Spring	
32	YEFX236144A	Traverse Guide	
33	YEP0FX3472	Traverse Motor Ass'y	
34	YEFX234179B	Clamper Cam	
35	XUC15V	Retaining Ring, 1.5mm	
36	YEFR03080	Belt	
37	YEFA011733	Suspension Chassis	
38	YEFX0051991C	Side Pressure Spring	
39	YEFX0051590	Vibration Spring	
40	YEP0FX2522	Clamper Unit	
41	YEFX011325	Pad	
42	YEFX0461661C	Load Switch Lever	
43	YEFX04692	Dumper (B)	
44	YEFX003735B	Clamper Rack	
45	YEP0FX2526	Roller Gear Ass'y	
46	YEFX0461658A	Feeder Lever	
47	YEJE01004	Retaining Ring, 2mm	
48	YEFX0461654A	Lock Lever (L)	
49	YEFX0461668E	Detect Lever (R)	
50	YEFX003762	Roller Gear (4)	
51	YEFX003731A	Loding Gear (3)	
52	YEFX0461846	Feeder Arm Ass'y	
53	YEFW04144	Shaft Holder (1)	
54	YEFX249408C	Lever Protection Cover	
55	YEFX0052059	Feeder Arm Spring (2)	

Ref. No.	Part No.	Part Name & Description	Remarks
56	XUC2V	Retaining Ring, 2mm	
57	YEFX249407A	Lock Control Plate	
58	YEFX0052032	Lever Spring	
59	YEFX0461880	Fook	
60	YEFX218282	Rubber Roller	
61	YEJW04128	Washer	
62	YEFW04138	Shaft Holder (2)	
63	YEFX0051987	Clamper Rack Spring	
64	YEFX0051994	Lever Spring (A)	
65	YEFX0461669E	Detect Lever (L)	
66	YEFX0461672B	Detect Arm (L)	
67	YEFX0051995	Lever Spring (B)	
68	YEFX0461772	Slide Plate	
69	YEFA011606	Main Chassis	
70	YEFX0461655A	Lock Lever (R) Ass'y	
71	YEFX9991635	Lock Lever (L)	
72	YEFX236145E	Disc Guide	
73	YEFX0461671B	Detect Arm (R)	
84	YEJS06097A	Screw, 2mm * 2.5mm	
86	YEJS02018FZ	Screw, 1.6mm * 7mm	
87	YEJT03152	Tapping Screw	
88	YEJT03132	Tapping Screw, 2.6mm * 4mm	
89	YEJT03131	Tapping Screw, 2.6 * 5mm	
90	YEJT03180	Tapping Screw, 2.6mm * 6mm	
91	XQN17+A25FX	Screw, 1.7mm * 2.5mm	
92	XYN2+J10FX	Screw, 2mm * 10mm	
93	XYN2+C5FX	Screw, 2mm * 5mm	
94	YEJS06187	Screw, 2mm * 2.5mm	
95	YEJS02037	Screw, 1.7mm * 2.5mm	

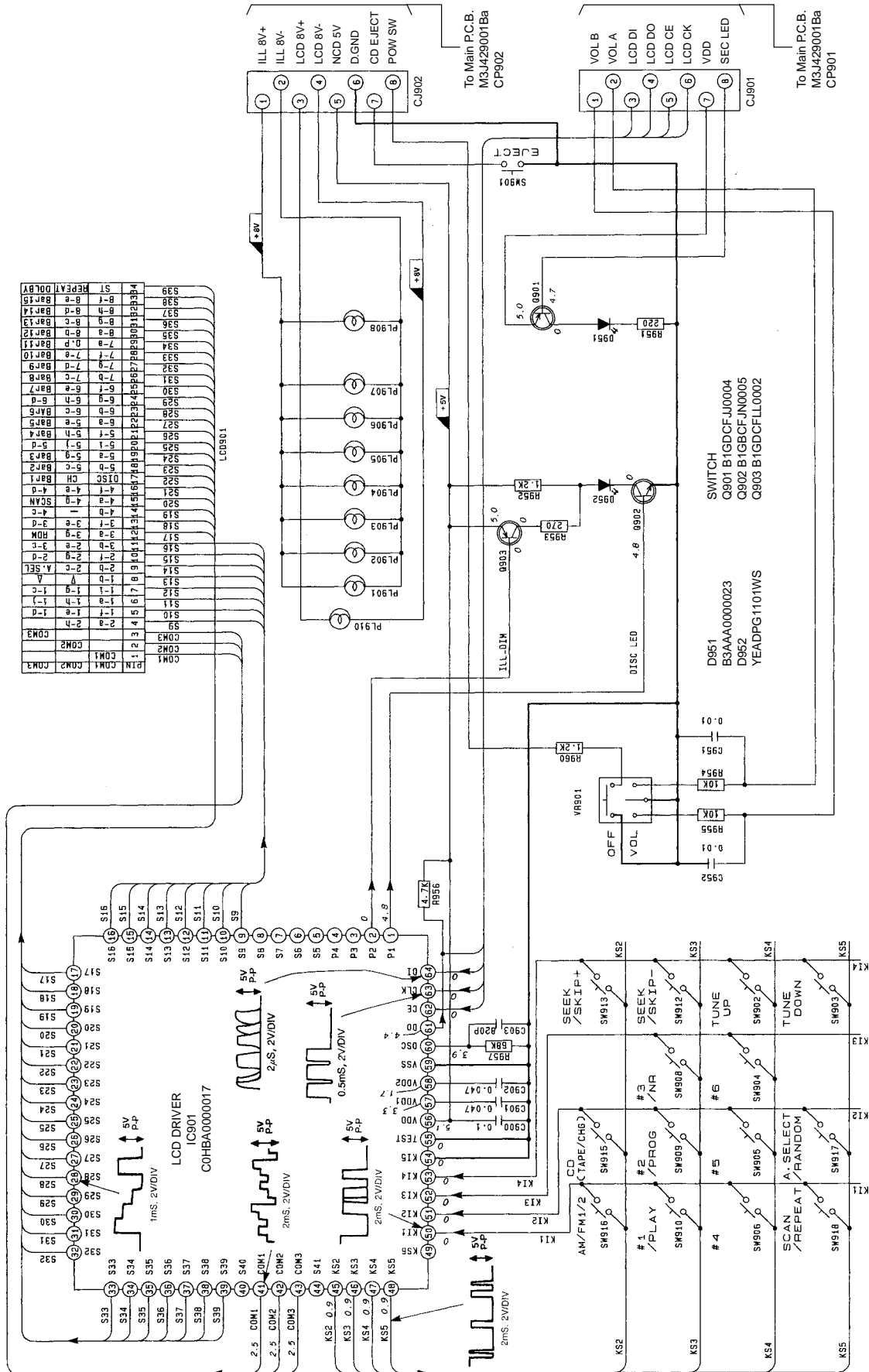
# 13 EXPLODED VIEW (CD Deck)



FD15156  
'99.9.15

# 15 SCHEMATIC DIAGRAM -1

## 15.1. Display Block



# 16 SCHEMATIC DIAGRAM -2

## 16.1. Main Block

