

INSTALLATION INSTRUCTIONS
LESLIE CONSOLE CONNECTOR KIT 7016 FOR MODEL 16 SPEAKERS
AND
LESLIE CONSOLE CONNECTOR KIT 7019 FOR MODEL 18 SPEAKERS

These kits install in the same manner, differing only in the type of adapter used. In the 7016 Kit, a 012377 crossover adapter is supplied. This adapter channels only midrange frequencies to the Model 16 speaker. In the 7019 Kit, a 065227 adapter is used. This adapter channels all available signal to the Model 18 speaker.

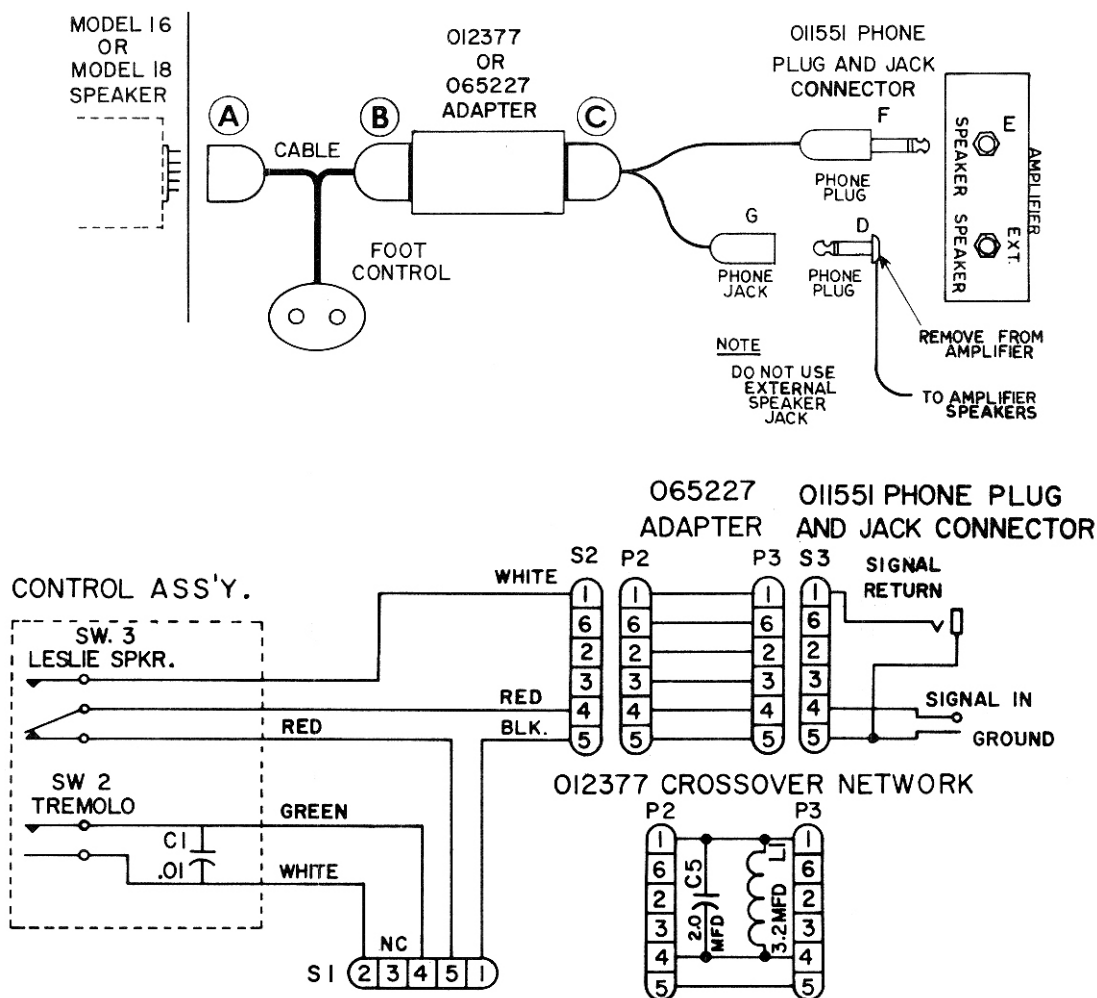
INSTALLATION:

CAUTION: Before proceeding, make certain all power to the amplifier and LESLIE speaker is disconnected.

1. Locate cable and foot control. A long and short cable are attached to the foot control. Connect longer cable's socket to plug at rear of Model 16 or Model 18 cabinet connector. (See "A" on Fig. 1.)
2. Connect shorter cable's socket to one end of the adapter. Make certain to use an 012377 adapter for Model 16 installations; an 065227 adapter for Model 18 installations. (See "B" on Fig. 1.)
3. Connect the sleeve adapter to the 6 contact socket on the phone plug and jack connector. (See "C" on Fig. 1.)
4. Detach phone plug "D" from speaker jack "E" at rear of amplifier. **DO NOT USE EXTERNAL SPEAKER JACK.**
5. Plug phone plug "F" into speaker jack "E".
6. Plug phone plug "D" into phone jack "G".
7. Plug in AC cords from the amplifier and LESLIE speaker. Installation is now complete.

Consult the Model 16 or Model 18 Owner's Manual for an explanation of the foot control's switch functions.

SCHEMATIC: 7016 KIT; 7019 KIT



KIT CONTENTS

012377	Crossover Adapter (7016 Kit Only)	026401	Washer, Flat, 15/32" x 3/4"
065227	Adapter (7019 Kit Only)	020958	Lockwasher, Internal, 1/2"x7/18"
011551	Phone Plug and Jack Connector	060467	Capacitor, Ceramic, .01 MFD, 1KV
PARTS LIST: CABLE and CONTROL ASSEMBLY		013235	Grommet, 1/2"
012385	Cable and Control Assembly	026385	Phone Plug
026456	Switch Housing	026393	Phone Jack
026443	Switch Housing Cover	028076	Wire Nut (2)
026445	SW3 Switch, Single Pole, Single Throw	029546	Socket, 6 Contact
026427	SW2 Switch, Single Pole, Double Throw	029264	Socket, 5 Contact
044776	Nut, Hex, 15/32-32 x 9/16" x 1/16"	061739	Cap, Clamp Type (2)
		026229	10' Cable, 4 Conductor, 18G
		029637	6' Cable, 3 Conductor, 18G

ORDERING PARTS:

Standard hardware, connectors, and electronic components should be purchased locally. Nonstandard items may be obtained through a LESLIE speaker dealer. Orders should include part numbers listed above.