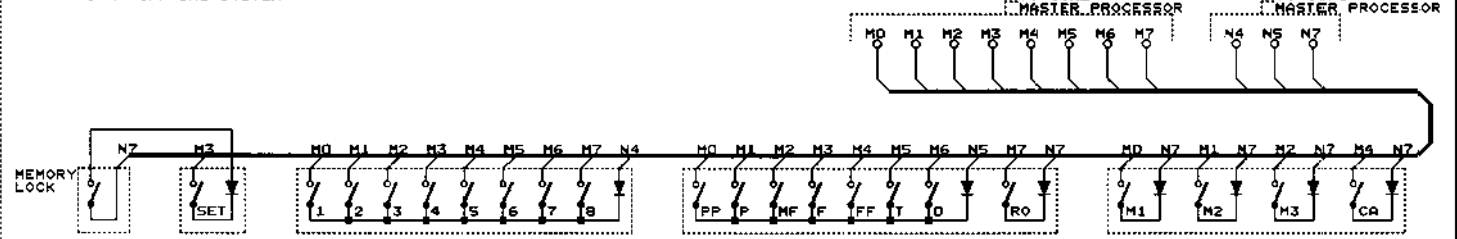


SWITCH-BANK CAPTURE SYSTEM



STOPLIST

- PEDAL**
- ST00 = DOUBLE BASS 16"
 - ST01 = SUBBASS 16"
 - ST02 = OCTAVE 8"
 - ST03 = GEDACKT 8"
 - ST04 = CHORALBASS 4"
 - ST05 = BASSFLUTE 4"
 - ST06 = OPEN FLUTE 2"
 - ST07 = MIXTURE III
 - ST10 = BOMBARDE 32"
 - ST11 = CONTRA TRUMPET 16"
 - ST12 = TRUMPET 8"
 - ST13 = CLARION 4"
- GREAT**
- ST14 = BOURDON 16"
 - ST15 = OPEN DIAPASON 8"
 - ST16 = ROHRFLUTE 8"
 - ST17 = GAMBA 8"
 - ST20 = OCTAVE 4"
 - ST21 = SALICIONAL 4"
 - ST22 = OPEN FLUTE 4"
 - ST23 = TWELFTH 2 2/3"
 - ST24 = SUPEROCTAVE 2"
 - ST25 = FLUTE 2"
 - ST26 = LARIGOT 1 1/3"
 - ST27 = CORNET IV
 - ST30 = SESQUIALTER II
 - ST31 = MIXTURE V-VII
 - ST32 = CONTRA TRUMPET 16"
 - ST33 = TRUMPET 8"

SWELL

- ST34 = QUINTATION 16"
- ST35 = OPEN DIAPASON 8"
- ST36 = STOPPED FLUTE 8"
- ST37 = VIOLA 8"
- ST40 = CELESTE 8"
- ST41 = OCTAVE 4"
- ST42 = VIOLON 4"
- ST43 = ROHRFLUTE 4"
- ST44 = FLUTE TWELFTH 2 2/3"
- ST45 = WALDFLUTE 2"
- ST46 = TIERCE 1 3/5"
- ST47 = NAZARD 1 1/3"
- ST50 = SIFFLUTE 1"
- ST51 = RAUSCHPEIFE III-V
- ST52 = CYMBAL II-III
- ST53 = CROMHNE 8"
- ST55 = VOX HUMANA 8"
- ST56 = OB0E E'

ACCESSORIES

- ST56 = SHELL TO GREAT
- ST57 = GREAT TO PEDAL
- ST60 = SHELL TO PEDAL
- ST61 = TREMULANT GREAT
- ST62 = TREMULANT SHELL
- ST64 = CHORUS
- ST64 = MANUAL BASS
- ST65 = MIDI TO GREAT (CHAN. 1)
- ST66 = MIDI TO SHELL (CHAN. 2)
- ST67 = MIDI TO PEDAL (CHAN. 3)

ALL CONNECTORS: TO MASTER PROCESSOR
ALL STOPLAMPS: 14Vdc/75mA

STOP-BANK & SWITCH-BANK CAPTURE SYSTEM		
DESIGN	LAB	REV.
DRAWN	VERSCHOOR	10-04-94
SWEELINCK II		PAGE 6