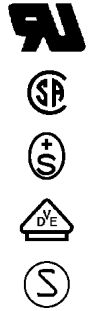


Actual information about approvals can be found on  
<http://www.schurter.com/approvals>



8843-FLR

C14



70° C

### Description

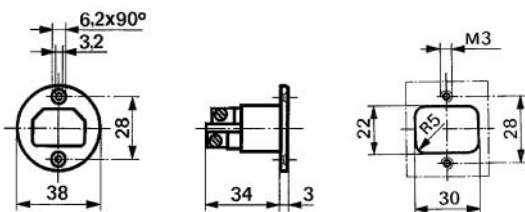
- Panel mount:  
Screw-on version from front side
- Connector, Pin temperature 70 °C, Protection class I
- Screw terminals

### Technical data

Ratings IEC	10 A / 250 VAC; 50 Hz	Terminals	Screw terminals
Ratings UL/CSA	10 A / 250 VAC; 60 Hz	Panel thickness s	Screw-on: max 8 mm Mounting screw torque max 0.5 Nm
Dielectric strength	> 2 kVAC between L-N > 2 kVAC between L/N-PE (1 min/50 Hz)	Materials: Housing	Thermoset, black, UL 94V-0
Allowable operation temp.	-25 °C to 70 °C	Appliance-inlet /-outlet	C14 acc. to IEC/EN 60320-1, UL 498, CSA C22.2 no. 42 (for cold condition) pin-temperature 70 °C, 10 A, Protection class I
Degree of protection	from front side IP40 acc. to IEC 60529		
Protection class	Suitable for appliances with protection class I acc. to IEC 61140		

### Dimensions

8843-FLR



Screw M3

### Variants

Order Number	Type
4300.0066	8843-FLR

Packaging unit 50 Pcs

Accessories

ACCESSORIES